

Electrolux Handling System

Slide Conveyors w/splashb. deep basin

Some Electrolux dishwasher models can perform to their full potential, if combined with the Electrolux Handling System range. The modular system allows to design ergonomic and reliable solutions to handle, transport and sort kitchenware, obtaining the most effective flow in the dishwashing room. The wide range contains cord conveyors for trays, manual, motorized and dishwasher driven sorting tables and a variety of roller, slide and cord conveyors for baskets.



EASY TO INSTALL

- ± 50 mm adjustable feet.
- The conveyors are supplied as knock-down.
- Connection to another rack conveyor or the dishwasher is possible on the left or the right.
- Thick welded flanges for sturdy connection between the units.
- Provided with "key holes" and "snap-on" system for fast and easy installation.
- "Snap on" system reduces the number of screws needed. Easy to assemble and clean.

- Two legs included as standard.
- Self bearing undershelf eliminates the need for additional frames.

EASY TO USE

- Manual rack movement on slide rails.
- Designed for 500x500 mm dishwashing baskets.
- Integrated splash guards prevents water leakages.
- Stainless steel strainer.

EASY TO CLEAN

- All surfaces are smooth with polished finish.

- All corners in the bottom of the basin are rounded.
- Slide rails are bent into the profile of the conveyor.
- The sloping bottom of the basin grants a smooth and rapid drainage.
- Include stainless steel waste bucket.

EASY TO MAINTAIN

- Basin constructed in AISI 304 1,2 mm stainless steel.
- AISI 304 feet and square 40x40 mm tubular legs.



 **Electrolux**

Electrolux Handling System
Slide Conveyors w/splashb. deep basin

EASY ON THE ENVIRONMENT

- 98% recyclable by weight.
- CFC free packaging.
- Developed and produced in ISO 9001 certified factory.

	HSDB8SB 865019	HSDB11SB 865020	HSDB16SB 865021
TECHNICAL DATA			
External dimensions - mm			
width	800	1100	1600
depth	620	620	620
height	1370	910	1370
height adjustment	50, 50	50, 50	50, 50
Basin dimensions	530x800x330h;	530x1100x330h;	530x1600x300h;
Basin material	304 AISI	304 AISI	304 AISI
Dimension of square section legs - mm	40x40	40x40	40x40
Legs material	304 AISI	304 AISI	304 AISI
Max. speed, m/min			
Net weight - kg.	17	29	39
Knockdown	●	●	●
ACCESSORIES			
CONNECT.PL(LONG)-HANDL.TO HT-FRONT/RIGHT	865164	865164	865164
CONNECT.PL(SHORT)-HANDL.TO HOODTYPE-LEFT	865163	865163	865163
CONNECTION PLATE-HANDLING TO WT90/RT10	865165	865165	865165
EMERGENCY STOP KIT FOR RACK TYPE DW	865162	865162	865162
END PLATE FOR CONVEYORS	865022	865022	865022
GRID SHELF-STATIONARY CONVEYOR 1100MM		865166	
GRID SHELF-STATIONARY CONVEYOR 1600MM			865167
PRE-RINSE SPRAY UNIT,AUTOM,THERMO.MIXER	865039	865039	865039
PRE-RINSE SPRAY UNIT,MIXER,TAP,SHOWER	865038	865038	865038
SHELF CONNECT.BRACKET-RACKT. SHORT PREW.	865041	865041	865041
SHELF CONNECTION BRACKET FOR RACK TYPE	865040	865040	865040
SHELF CONNECTION BRACKET-WT90/RT10	865042	865042	865042
SHELF+UPSTAND-STATIONARY CONVEYOR 1100MM		865025	
SHELF+UPSTAND-STATIONARY CONVEYOR 1600MM			865026
SHUT-OFF VALVE FOR BASIN CONVEYORS	865037	865037	865037

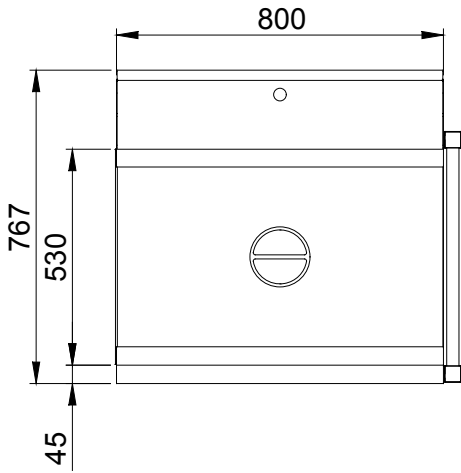
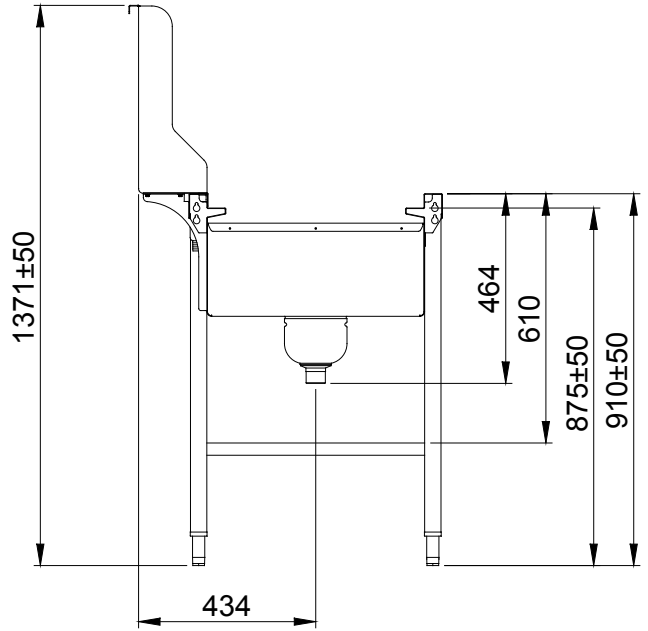
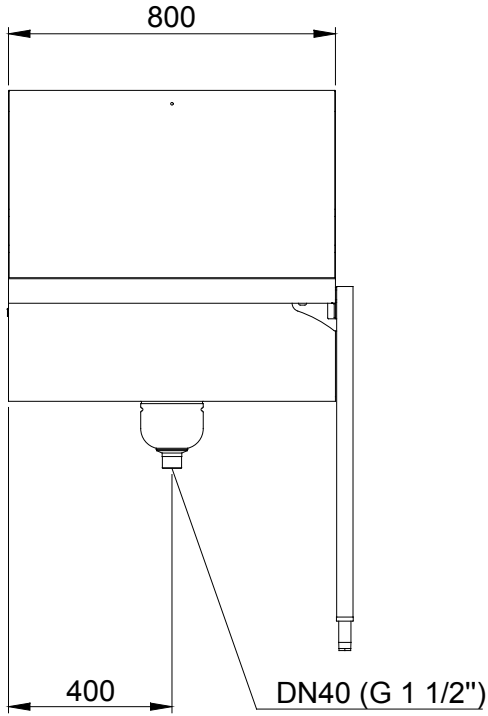
IIAF020

2009-06-19

Subject to change without notice

Electrolux Handling System
Slide Conveyors w/splashb. deep basin

865019



ST0 45 28-10

LEGEND
C - Water drain

HSDB8SB
865019

1"1/2

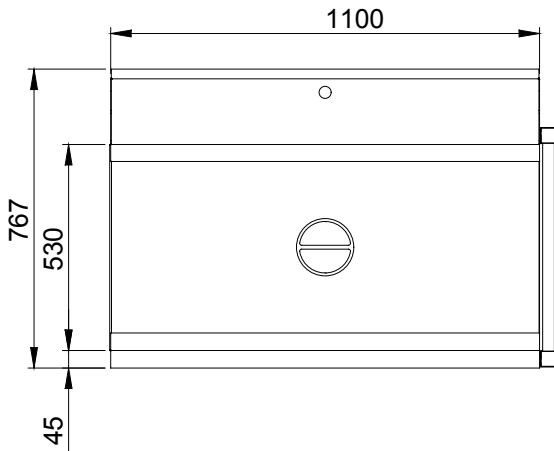
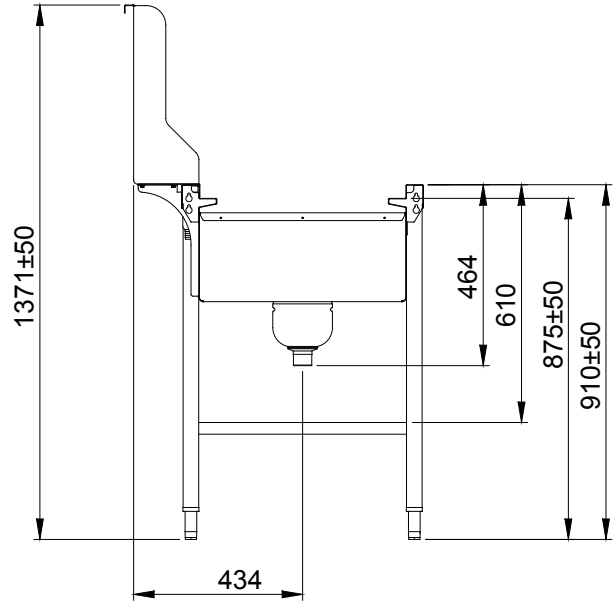
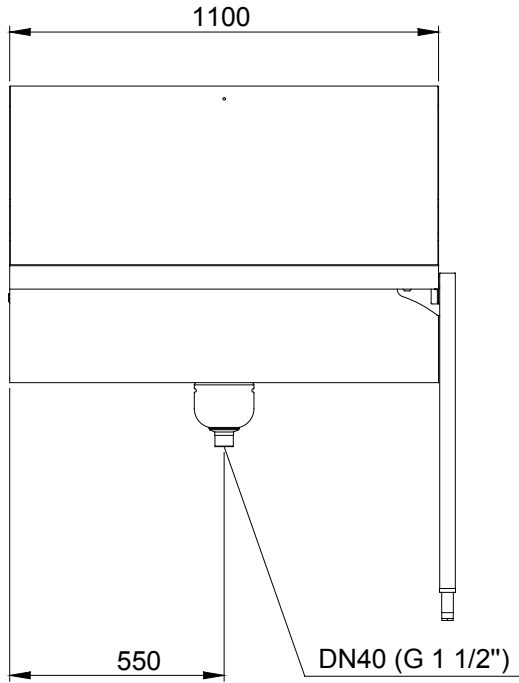
IIAF020

2009-06-19

Subject to change without notice

**Electrolux Handling System
Slide Conveyors w/splashb. deep basin**

865020



ST0 45 28-11

LEGEND
C - Water drain

**HSDB11SB
865020**

1"1/2

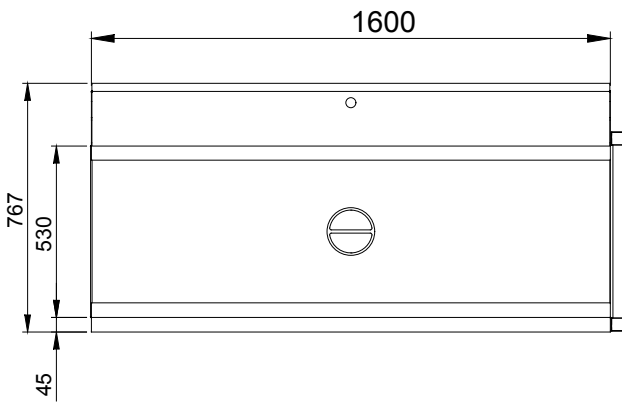
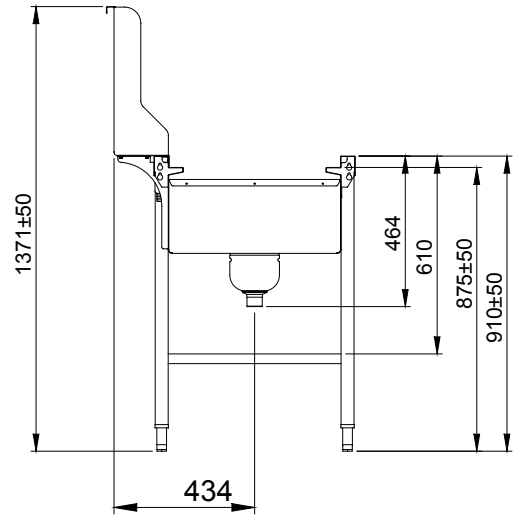
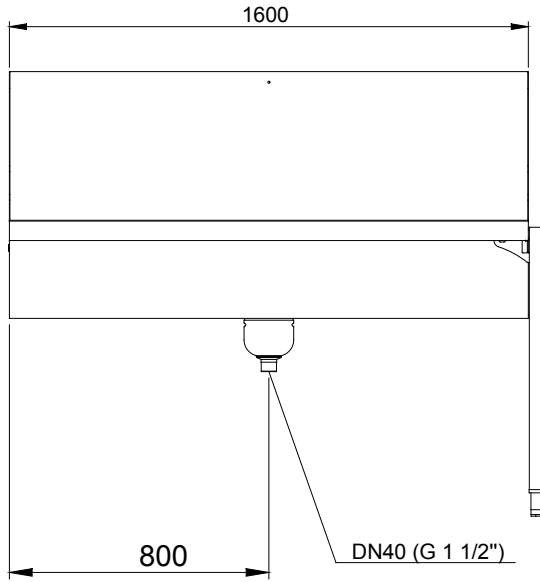
IIAF020

2009-06-19

Subject to change without notice

**Electrolux Handling System
Slide Conveyors w/splashb. deep basin**

865021



ST0 45 28-12

LEGEND
C - Water drain

**HSDB16SB
865021**

1"1/2

IIAF020

2009-06-19

Subject to change without notice