

RANGE COMPOSITION

The range consists of a base model LB1 available in 4 versions: standard; with water softener; with water softener and drain pump; with water softener, drain pump and rinse pump.



402000

LB-1

GLASSWASHERS **ZANUSSI**
PROFESSIONAL

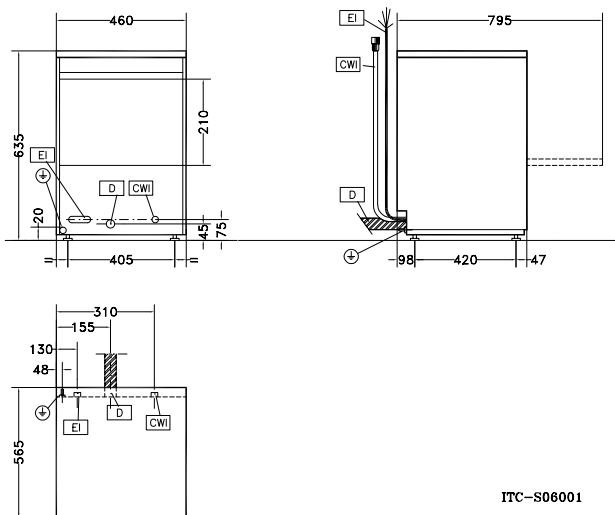
FUNCTIONAL AND CONSTRUCTION FEATURES

- ◆ A high standard of washing, rinsing and hygiene is achieved.
- ◆ All versions can be made to carry out a cold rinse after the hot rinse to ensure that glasses are ready for use as they do not leave the appliance hot.
- ◆ Two cycles (120 and 300 seconds); the longer cycle allows the washing of crockery with a higher degree of soil.
- ◆ Glasses, cups and crockery up to a height of 210 mm can be washed.
- ◆ 5 litre capacity boiler, washing temperature 55° to 65°C and rinse temperature 80° to 90°.
- ◆ Double-walled washing chamber and tank.
- ◆ Separate washing and rinsing circuits.
- ◆ Load bearing frame, side and front panels, tank and filter, washing and rinsing arms and jets in 304 AISI stainless steel.
- ◆ Upper and lower rotary washing arms and rinsing arms.
- ◆ Frontal access to the main components: boiler elements, thermostats, timer, rinse aid dispenser and electrical components.
- ◆ Basket, for glasses 100 mm in height, plus the insert rack for plates and cutlery, electric cable and the hose for water connection supplied as standard.
- ◆ All models comply with the standards of the main international approval bodies and are CE marked.

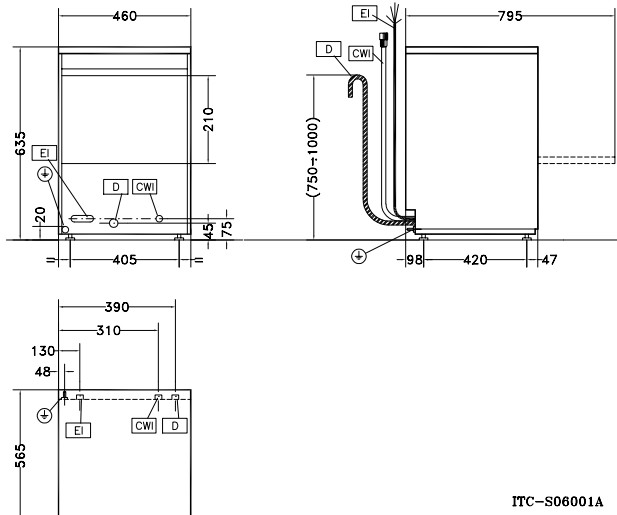
TECHNICAL DATA				
CHARACTERISTICS	MODELS			
	LB1 402000	LB1WS 402001	LB1WSWP 402002	LB1TOP 402018
Water supply				
temperature - °C	10	10	10	10
hardness - °f	7-14	>14	>14	>14
Cold rinse	●	●	●	●
Water softener		●	●	●
Drain pump			●	●
Rinse Booster Pump				●
N° of cycles	2	2	2	2
Duration cycles - sec.	120/300	120/300	120/300	120/300
Basket capacity/h	30	30	30	30
External dimensions - mm				
width	460	460	460	460
depth	565	565	565	565
height	635	635	635	635
Cell dimensions - mm				
width	400	400	400	400
depth	400	400	400	400
height	210	210	210	210
Washing cycle				
temperature - °C	55-65	55-65	55-65	55-65
tank capacity - lt.	6	6	6	6
power pump - kW	0.3	0.3	0.3	0.3
electrical elements - kW	0.8	0.8	0.8	0.8
Cold rinse cycle				
duration - sec.	10	10	10	10
temperature - °C	10	10	10	10
water consumption - lt./cycle	2	2	2	2
Boiler capacity - lt.	5	5	5	5
Boiler elements - kW	3	3	3	3
Power - kW				
drain pump			0.034	0.034
total power	3.3	3.3	3.3	3.3
Noise level - dBA	<61	<61	<61	<61
Net weight - kg.	34	34	34	34
Supply voltage	230 V, 1N, 50	230 V, 1N, 50	230 V, 1N, 50	230 V, 1N, 50
INCLUDED ACCESSORIES				
BASKET FOR GLASSES+SAUCERS/CUTLERY INS.	1	1	1	1

402000, 402001

402002

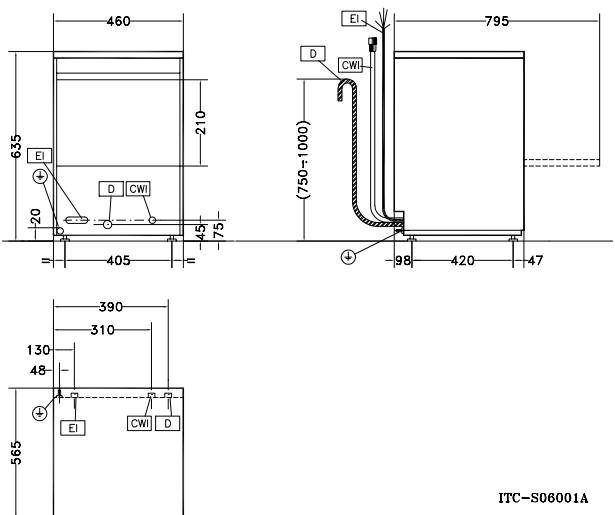


ITC-S06001



ITC-S06001A

402018



ITC-S06001A

LEGEND

	LB1 402000	LB1WS 402001	LB1WSWP 402002	LB1TOP 402018
CWI - Cold water inlet	G 3/4"	G 3/4"	G 3/4"	G 3/4"
D - Water drain	22mm	22mm	27mm	27mm
EI - Electrical connection	230 V, 1N, 50	230 V, 1N, 50	230 V, 1N, 50	230 V, 1N, 50

OPTIONAL ACCESSORIES

ACCESSORIES	MODELS			
	LB1 402000	LB1WS 402001	LB1WSWP 402002	LB1TOP 402018
BASKET F. GLASSES-ANGLED BASE-395X395X200	867056	867056	867056	867056
BASKET FOR GLASSES+SAUCERS/CUTLERY INS.	867055	867055	867055	867055
BASKET FOR GLASSES-395X395X100 MM	867053	867053	867053	867053
BASKET FOR GLASSES-395X395X200 MM	867054	867054	867054	867054
COVER GRID FOR SMALL/LIGHT ITEMS IN RACK	867016	867016	867016	867016
FILTER FOR PARTIAL DEMINERALIZATION	864017			864017
FILTER FOR TOTAL DEMINERALIZATION	864015			864015
INCLINED INSERT FOR CUPS	867061	867061	867061	867061
INSERT FOR 14 SAUCERS	867060	867060	867060	867060
INSERT FOR "FLUTE" GLASSES	867058	867058	867058	867058
KIT 4 PLASTIC BOXES FOR CUTLERY-YELLOW	865574	865574	865574	865574
KIT TO MEASURE TOTAL/PART.WATER HARDNESS	864050	864050	864050	864050
RINSE BOOSTER PUMP KIT	867063	867063	867063	867063
ROUND BASKET KIT WITH SQUARE FRAME	867057	867057	867057	867057
YELLOW CUTLERY CONTAINER	864242	864242	864242	864242



www.zanussiprofessional.com