

Standard Glasswashers - large

The Electrolux Dishwashing range is produced for customers with the highest conceivable demands for good efficiency, economy and ergonomics for dishwashing operation. The product range comprises glasswashers, undercounter dishwashers, hood type dishwashers, rack type dishwashers, flight type dishwashers and pot and pan washers. The Large Standard Glasswasher has a charging hole 360 mm in height, may hold a 500 mm wide square basket and is made to wash glasses, cups and small plates.



727044

EASY TO INSTALL AND MAINTAIN

- The glasswasher require only 1 phase 230V, 16 Amp. supply.
- Simple service from the front.

EASY TO CLEAN

- The glasswasher has a smooth surface.
- All the internal elements (arms and filter) are easily extractable.
- 304 AISI stainless steel front and side panels, wash tank and filter.

EASY TO USE

- Built-in rinse water heater to increase the temperature of the final rinse water.
- Built-in rinse aid dispenser for perfect rinsing results.
- Simple control panel.
- One dishwashing program for normally soiled items.
- Counter-balanced door with springs on each side.

CONSTRUCTION FEATURES

- Double skinned construction.
- Wash/rinse arms and nozzles in polypropylene.
- Completely closed on the reverse by a cover plate.
- All models finished in top quality materials to aid durability.

EASY ON THE ENVIRONMENT

- 98% recyclable by weight.
- CFC free packaging.
- Low noise level.
- Developed and produced in ISO 9001 and ISO 14001 certified factory.



Electrolux

**Electrolux Dishwashing
Standard Glasswashers - large**

IAC0030

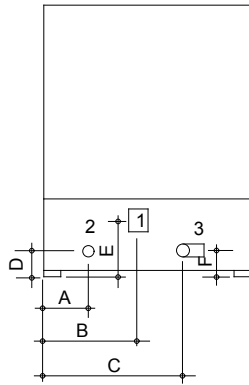
2009-06-19

Subject to change without notice

	WT2QR 727044
TECHNICAL DATA	
Water supply	
pressure min. , max. - bar	2, 4
temperature - °C	10
hardness - °f	7-14
hardness - °d	4-8
N° of cycles	1
Duration cycles - sec.	180
Basket capacity/h	20
External dimensions - mm	
width	600
depth	600
height	840
Cell dimensions - mm	
height	360
Washing cycle	
temperature -°C	55-65
tank capacity - lt.	26
power pump - kW	0.736
electrical elements - kW	2.8
Hot rinse cycle	
duration - sec.	16
temperature during rinse - °C	80
water consumption - lt./cycle	2.8
Boiler capacity - lt.	7.8
Boiler elements - kW	2.8
Power - kW	
total power	3.5
Net weight - kg.	70
INCLUDED ACCESSORIES	
BASKET FOR 18 DINNER PLATES 240MM-YELLOW	1
BASKET FOR 48 SMALL CUPS/24 CUPS-BLUE	1
RECT.CUTLERY HOLDER(75X180X100H)-2 COMP.	1
ACCESSORIES	
BASKET FOR 18 DINNER PLATES 240MM-YELLOW	867002
BASKET FOR 48 SMALL CUPS/24 CUPS-BLUE	867007
RECT.CUTLERY HOLDER(75X180X100H)-2 COMP.	860155

**Electrolux Dishwashing
Standard Glasswashers - large**

727044

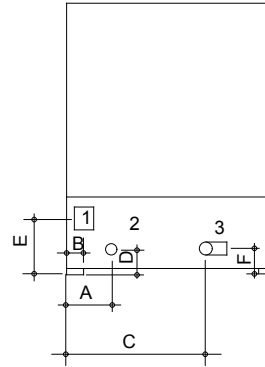
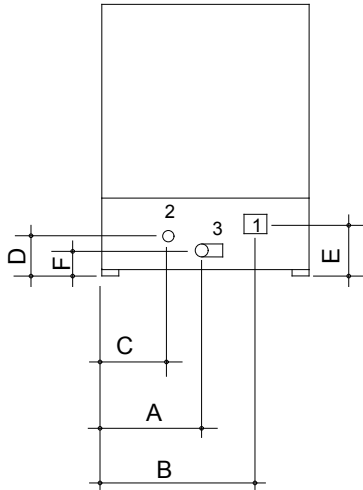


727038/39/40
727041/42/43
727044

- ① POWER SUPPLY
- ② INLET
- ③ OUTLET

727034
727035

727036
727037



MODEL	SIDE A	SIDE B	SIDE C	SIDE D	SIDE E	SIDE F
727036	57	30	257	44	110	44
727037	82	55	282	44	110	44
727038/39/40	165	200	265	38	85	38
727041/42/43	190	230	295	38	85	38
727044	240	305	365	50	85	50
727035	315	375	270	74	95	42
727034	255	300	200	74	95	42

LEGEND	WT2QR 727044
B - Cold water inlet	G 3/4"
C - Water drain	28mm
I - Electrical connection	230 V, 1N, 50

IAC0030

2009-06-19

Subject to change without notice