

PIXMA MP620 Macintosh Wireless Setup

For USB, Wired LAN and all Windows connections see Getting Started Guide.

Before starting please locate and write down your access point settings:

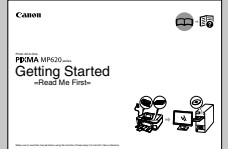
Network Name (also called SSID): _____

Network password (if applicable): _____

1

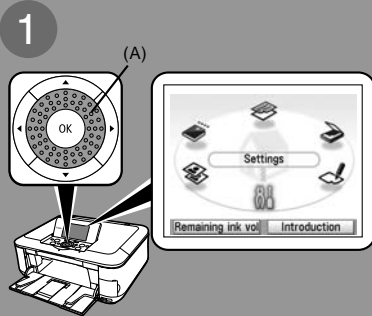
Hardware Setup

Follow setup instruction on pages 2-8 of the Getting Started Guide

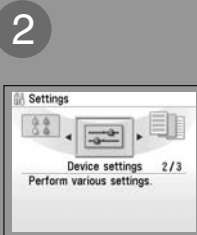


2

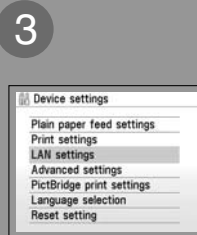
Wireless LAN Setup



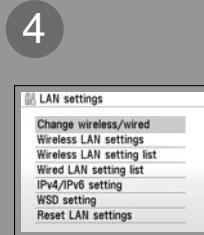
Use the Easy-Scroll Wheel (A) or the ◀ or ▶ button to select **Settings**, then press the **OK** button.



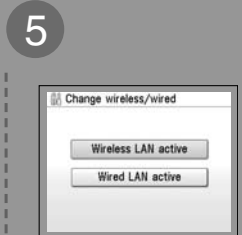
Select **Device settings**, then press the **OK** button.



Select **LAN settings**, then press the **OK** button.



Select **Change wireless/wired**, then press the **OK** button.

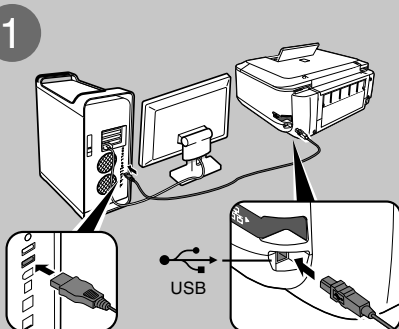


Select **Wireless LAN active**, then press the **OK** button.

3

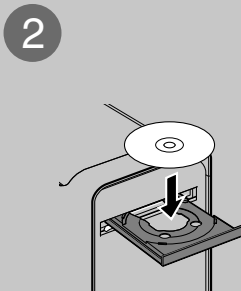
Driver/Software Install

For information on setup when printing from multiple computers, see the Getting Started Guide.



Connect one end of the USB cable to the computer and the other to the machine.

Make sure the machine is turned on.

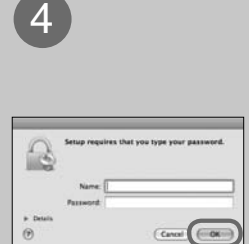


Turn on the computer, then insert the *Setup CD-ROM* into the CD-ROM drive.



Double-click the **Setup** icon.

If the CD-ROM folder does not open automatically, double-click the **CANON_IJ** icon on the desktop.



Enter your **Administrator Name** and **Password**. Click **OK**.

If you do not know your administrator name or password, click ? .

continue ➡

3 *continued...*

Driver/Software Install

5



Click **Easy Install**.

6



Follow **on-screen** instructions.

7



Click **Restart**.

When computer restarts, Canon IJ Network Tool starts automatically.

4A

For Users With One Access Point

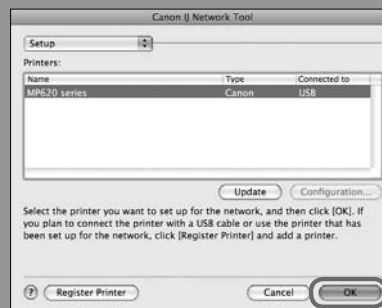
For Users With Multiple Access Points (Wireless Routers) Proceed to Section 4B

1



- On the **Canon IJ Network Tool** screen, select **LAN connection**
- Click **OK**

2



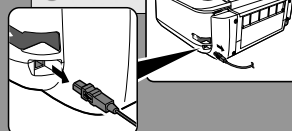
- Select **Setup** in the drop down menu
- Select **MP620 series** in Printers
- Click **OK**

3



- When the **Access Points** screen appears, select an **access point** (SSID)
- Enter your **Network Password** (if applicable)
- Click **Connect**

4



- Turn off the printer
- Disconnect the USB cable and place the printer where it will be used
- Turn the printer back on
- Click **Next**

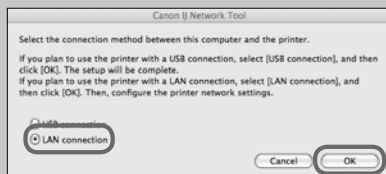
Proceed to section 5

4B

For Users With Multiple Access Points

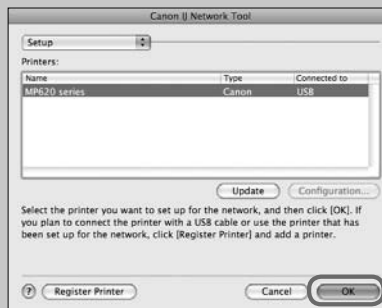
(For example: AirPort Extreme AND Time Capsule)

1



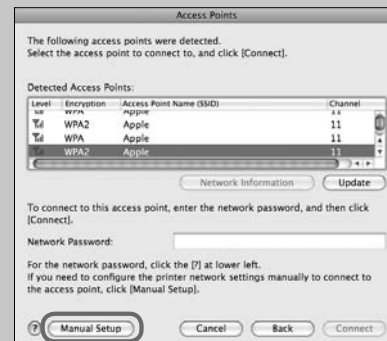
- On the **Canon IJ Network Tool** screen, select **LAN connection**
- Click **OK**

2



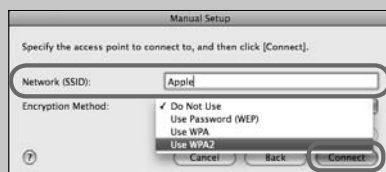
- Select **Setup** in the drop down menu
- Select **MP620 series** in Printers
- Click **OK**

3



Click **Manual Setup**

4



- Enter the **Network Name (SSID)** that you would like the printer to join
- Choose your **Encryption Method** from the drop down menu
- Click **Connect**

5



- Check the **Authentication Type**
- Click **Next**

6



- Enter your **Passphrase**
- Click **Next**

7



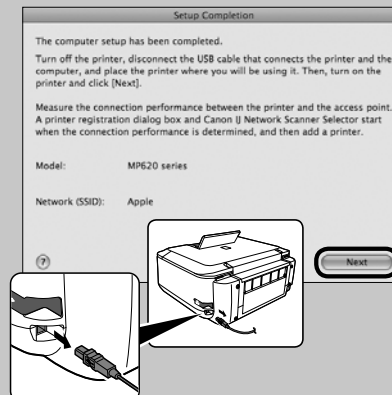
Check the settings and click **Finish**

8



Click **Connect**

9



- Turn off the printer
- Disconnect the USB cable and place the printer where it will be used
- Turn the printer back on
- Click **Next**

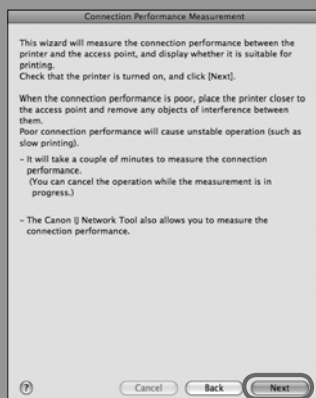
Proceed to section 5



5

Measure Wireless Performance

1




On the **Connection Performance Measurement** dialog box, click **Next**.


2



Confirm the measurement results, then click **Finish**.

Ensure that  is displayed in Connection performance between the printer and the access point.

The Printer Setup Utility and Canon IJ Network Scanner Selector will start up.

 To check whether the new location is better, click **Remeasurement**. Measurement of the communication status is performed again.


6

Complete the Setup

1



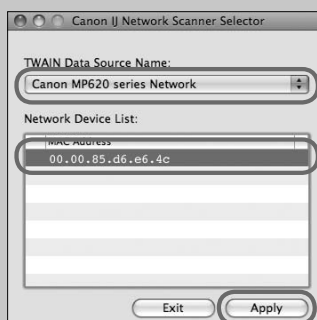
- Wait for a while, then select **Canon MP620 series**
- Click **Add**

 The alphanumeric string after **Canon MP620 series** is the machine's MAC address.

If the machine has not been detected, make sure of the following.

- The machine is turned on.
- The firewall function of any security software is turned off.
- Wireless LAN Connection: The computer is connected to the access point.
- The machine is not set to use access control (MAC address filtering).

2



- On the **Canon IJ Network Scanner Selector** screen select **Canon MP620 series Network** in **TWAIN Data Source Name** and the MAC address of the machine in **Network Device List**
- Click **Apply** to use the machine as a scanner

3



- Confirm that a **check mark** is displayed
- Click **Exit** to close the dialog box

Proceed to page 56 of the Getting Started Guide, "Loading Paper"

Apple, AirPort Extreme, Macintosh and Time Capsule are trademarks of Apple, Inc., registered in the U.S. and other countries.

Getting Help from Canon

Visit www.canontechsupport.com

Call 1-800-828-4040

Monday - Friday (excluding holidays), during the warranty period