

EPSON® Remote Configuration Manager

The EPSON Remote Configuration Manager lets you change the printer's default settings, update the printer with the new settings, and save them in a configuration file which you can use any time. This is especially convenient in a multi-printer network environment; individual configuration files can be created for each printer's specific application requirements. The program works on these printers:

- FX-880+
- FX-880+ in Okidata® mode
- FX-1180+
- FX-890
- FX-890 in Okidata mode
- FX-2190
- FX-2190 in Okidata mode
- LQ-590
- LQ-2090

Note:

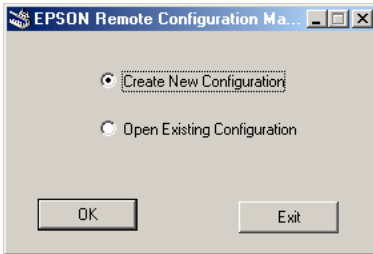
If you are using Windows 2000 and the printer is connected to the parallel port, Remote Configuration Manager may not work. In this case, do one of the following:

- Before running the program, set the printer driver to the LPT2 port. Then use Remote Configuration Manager to check or change the default settings as described in this book. After you finish using the program, remember to return the setting to LPT1.*
- Connect the printer to the USB port instead.*

Starting the Program

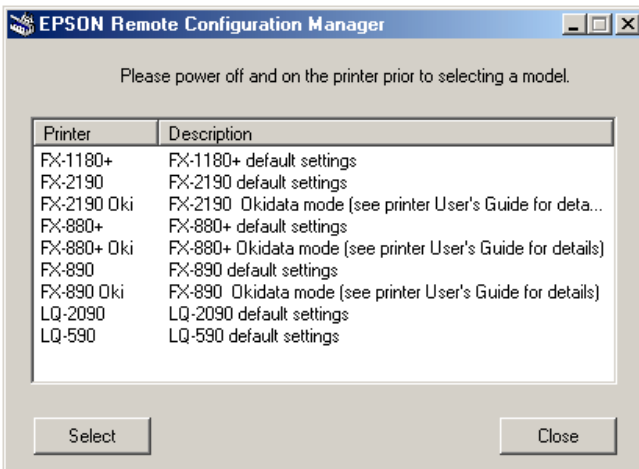
1. From the Start menu, select Programs (or All Programs), Epson Remote Configuration Mgr, and then click Epson Remote Configuration Manager.

You see this window:



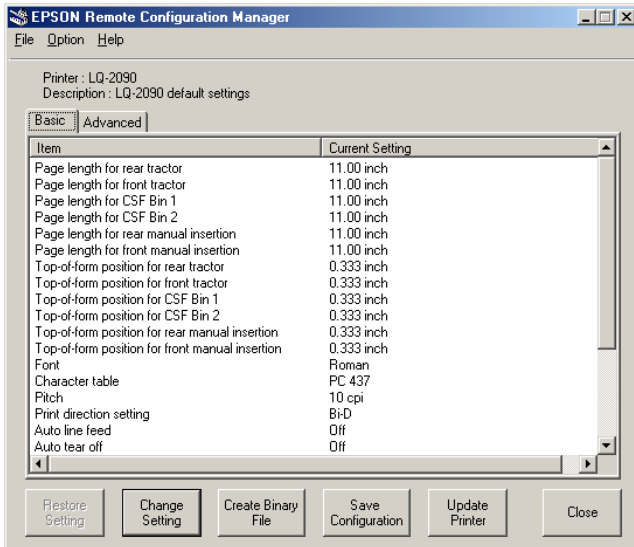
2. Select Create New Configuration and click OK. (If you want to make changes to a configuration file that was created earlier, see “Using an Existing Configuration File” on page 9.)

You see the printer model window:

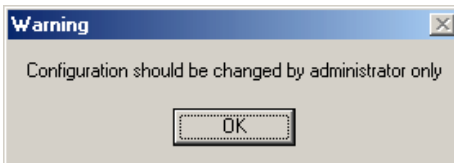


3. Turn the printer off, wait a moment, and turn it back on.
4. Choose your printer from the list and click **Select**. If you are using your printer in Okidata mode, be sure to select the Oki version for your printer.

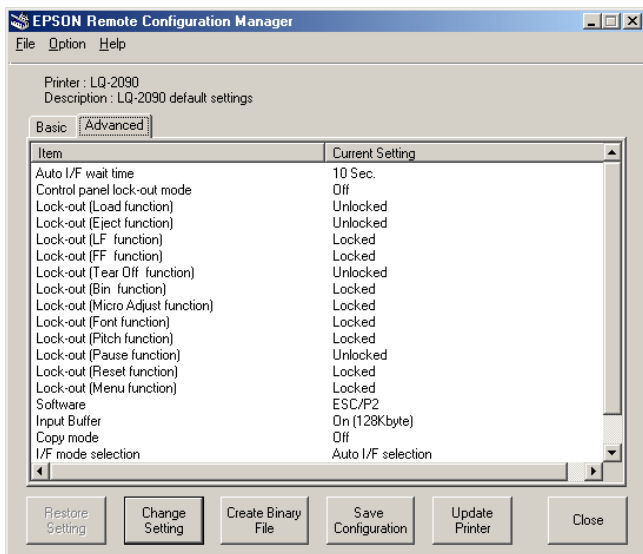
You see the Remote Configuration Manager screen:



You can change settings in the Basic tab (shown above) and the Advanced tab. If you select the Advanced tab, you see this message:



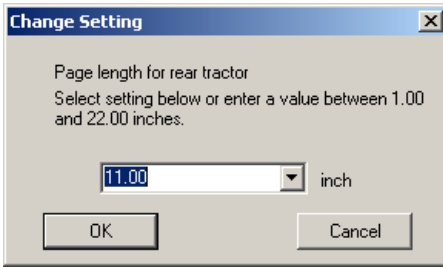
5. Click OK to display the Advanced tab settings:



See the following section to change the settings.

Changing the Printer Settings

1. Double-click the setting you want to change or select it from the list and click the Change Setting button. You see a window like this:



2. Select the value you want from the pull-down list or enter the setting you want and click OK.

If you decide not to change a setting, click Cancel.

Note:

For more information about printer settings and options, see your printer documentation.

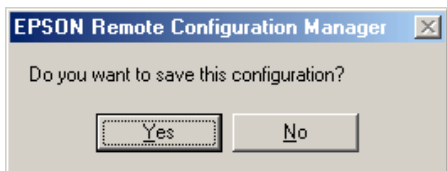
When you finish making changes to the settings, you can either update the printer now with the new settings, as described below, or save the settings in a configuration file to be used in the future (see page 8).

Important: You must update the printer for the settings to take effect.

Updating the Printer With the New Settings

When you want the printer to use the new settings, you must update it as follows:

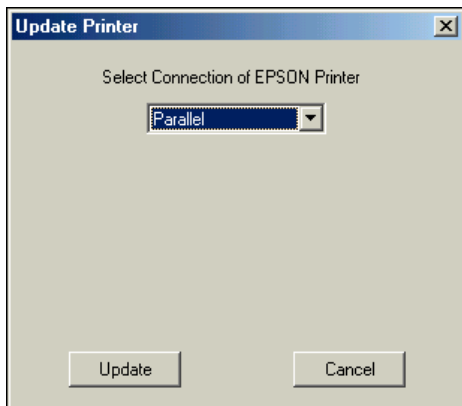
1. If the configuration file you want to use is not already open, open it now as described on page 9.
2. Click the Update Printer button. If the file has not been saved, you see this message:



If you want to save your changes, click Yes. Enter a name for the file (keeping the extension .cfg), and click Save. (See "Saving the Configuration File" on page 8 for more information.)

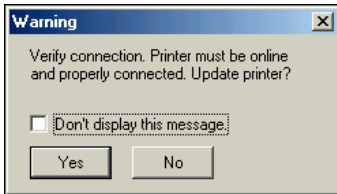
If you don't need to save your changes, click No.

You see this window:



3. Make sure the correct interface is selected for your printer (Parallel, USB, TCP/IP, or Serial) and click Update.

If you did not select the correct interface, or if the printer is not turned on or connected properly, you see one of these messages:

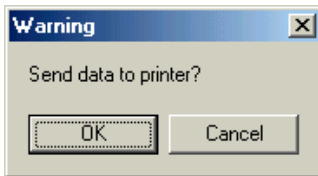


Make sure the printer is connected properly and turned on. Then click Yes or OK to update the printer.

Note:

You may need to click the Update button again (step 2).

You see this window:



4. Click OK. The control panel lights flash and the print head moves to show that the settings have been changed.

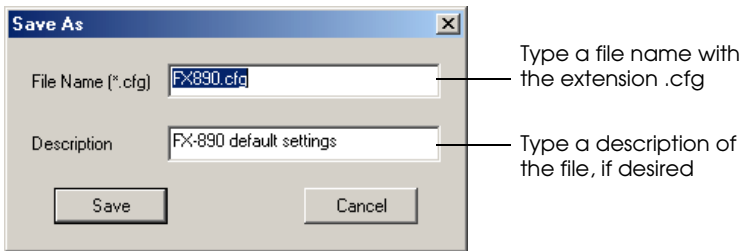
The new settings remain in effect until you select another configuration file or restore the default settings.

Saving the Configuration File

If you want to save the changes you have made to the printer settings in a configuration file, do one of the following:

- ❑ To save a new configuration file or overwrite the current one with the new settings, click **Save Configuration**. If you are making changes to an existing file, the new settings overwrite the original ones.

If this is a new file, you see this message:



Enter a new name for the configuration file and a description of it, if desired. Then click **Save**. Make sure the extension remains **.cfg**.

- ❑ To save the file with a new name so you don't overwrite the open one, select **Save As** from the **File** menu. Enter a new name for the configuration file and click **Save**. Make sure the extension remains **.cfg**.

Configuration files are saved in this directory:

Program Files\Epson Remote Configuration\Setting

Note:

If you want to remove a configuration file, delete it from the \Setting directory.

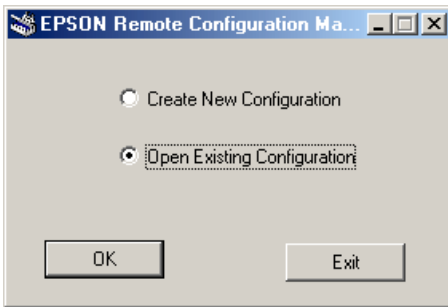
Using an Existing Configuration File

If you already created a configuration file, you need to open it to:

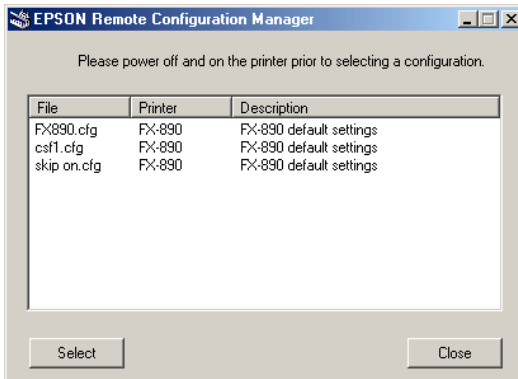
- Check its settings
- Change one or more settings
- Update the printer with the configuration file settings

Follow these steps:

1. Start the Remote Configuration Manager.
2. When you see the first screen (shown below), click the Open Existing Configuration button and click OK.



You see a window like this:



3. Choose the file you want to open and click **Select**. You see the EPSON Remote Configuration Manager screen, shown on page 3.

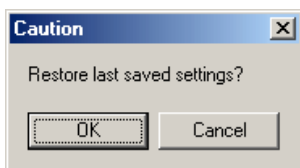
Now you can change any settings, if necessary. If you want to save your changes, click the **Save Configuration** button or select **Save As** from the file menu.

4. When you are ready to update the printer with the current settings, click the **Update Printer** button.

Restoring Original or Default Settings

If you made changes in the open configuration file but then change your mind, you can restore the original settings or the factory default settings:

- To restore the original saved settings, click the **Restore Setting** button or select **Restore Setting** from the File menu. You see this message:

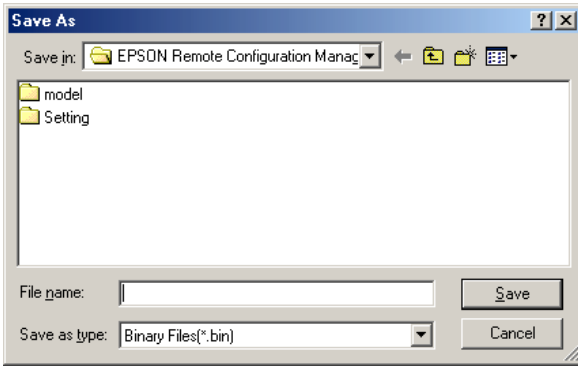


Click **OK**.

- If you want to restore the factory default settings for all the options, select **Factory Setting** from the Option menu. When you see the confirmation message, click **OK**.

Creating a Binary File

If you need to be able to change the printer's settings from a DOS system, you can create a binary file. First make the changes to the printer settings that you want saved in the binary file. Then click the Create Binary File button. You see this window:



Make sure Binary Files is selected as the file type and choose where you want to save the file. Type the name and the extension .bin. Then click Save.

Copyright Notice

All rights reserved. No part of this publication may be reproduced, stored in a retrieval system, or transmitted in any form or by any means, electronic, mechanical, photocopying, recording, or otherwise, without the prior written permission of SEIKO EPSON CORPORATION. The information contained herein is designed only for use with these EPSON printers. EPSON is not responsible for any use of this information as applied to other printers.

Trademarks

EPSON is a registered trademark of SEIKO EPSON CORPORATION.

General Notice: Other product names used herein are for identification purposes only and may be trademarks of their respective owners. EPSON disclaims any and all rights in those marks.