

## MFC-8840D and MFC-8840DN Duplex function

The MFC-8840D and the MFC-8840DN come with duplex feature as standard. This facility is built-in, so there is nothing to add to the machine. It is ready to duplex straight out of the box.

### Automatic duplex printing

Whether your intentions are to produce professional documents or reduce paper usage, the MFC-8840D and MFC-8840DN enable you to automatically print to both sides of the paper. Simply select the option in the printer driver and the machine will do the rest.

### Semi-automatic duplex copying

By placing multiple single sided originals into the auto document feeder, the MFC-8840D and MFC-8840DN can automatically copy to both sides of the output paper.

### Automatic duplex fax receive

This useful feature is standard on the MFC-8840D and MFC-8840DN. When activated, any multiple page fax messages received can be printed onto both sides of the paper, cutting your paper usage and costs at the same time as keeping your fax messages in order.

### Multi-purpose tray

The MFC-8840D and MFC-8840DN come with a built-in multi-purpose tray as standard. It accommodates various paper types including labels, transparencies and envelopes. Up to 50 sheets can be placed in the multi-purpose tray at one time. This is ideal when you want to print on alternative stock.

### Brother consumables

Brother has made every effort to make consumable replacement as easy as possible.

### Benefits of this to the customer are:

Toner and drum compatibility with the complete range of products in this generation including, multifunction machines and printers. This reduces the stock of consumables required to keep all your machines working at their optimum efficiency.

Separate toner and drums reduce wastage and overall costs.

High yield and standard yield toners available depending on your usage.

### The consumables:

TN-3030 -  
Standard yield toner

TN-3060 -  
High yield toner

DR-3000 -  
Printing drum



MFC-8440  
MFC-8840D  
MFC-8840DN

## Technical Information

### General

Engine	Laser
LCD display	5 lines x 22 characters
Back-up for clock	Keeps time and date backed up for 4 days
Memory capacity	32MB standard / 160MB maximum
Automatic document feeder	Up to 50 sheets
Paper handling size	A4/LTR/LG/B5/A5/B6/A6/EXE
Paper capacity	Standard paper cassette: Up to 250 sheets Optional paper cassette: Up to 250 sheets (LT-5000) Output paper capacity: Up to 150 sheets
Simultaneous operation	(Print/Fax) (Print/Copy) (Print/Scan)
Multi-purpose tray	Up to 50 sheets on MFC-8840D and MFC-8840DN

### Laser Printer

Speed	Up to 20ppm
Resolution	Max. 2400 x 600dpi
Duplex printing	On MFC-8840D and MFC-8840DN
Standard print language	Windows GDI
Emulation	PCL6 & BR-Script 3
Secure print	Prevents unauthorised printing of protected documents

### Laser Copier

Speed	Up to 20cpm
Resolution	Max. 1200 x 600dpi
Multi copy	Produces up to 99 copies of each original
Stack & Sort	Stacks or sorts output copies
Enlargement / reduction ratio	25% - 400% in 1% increments
N in 1	Compress 2 or 4 pages on to a single sheet
Poster printing	Enlarge image to poster size
Semi auto duplex copying	On MFC-8840D and MFC-8840DN

### Colour Scanner

Resolution	Optical Interpolated	Max. 600 x 2400dpi Max. 9600 x 9600dpi 256 shades of grey
Grey scale		48 bit internal / 24 bit external
Colour depth		Scan to e-mail/OCR/Image/File
'Scan' key		

### Interface

External TAD Interface		Interface for connecting external telephone answering device
Parallel		IEEE1284 Parallel Cable Port
USB		Hi-Speed USB2.0
Network 10/100Base-TX Ethernet	Optional - NC-9100h Standard - NC-9100h	On MFC-8440 and MFC-8840D On MFC-8840DN

### Laser Fax

Dual access		Scan a fax for transmission whilst receiving a fax
Modem		33.6kpbs Super G3 Approx 2 seconds transmission
Data compression		MH / MR / MMR / JBIG
Automatic redial		Automatic redial if the recipient fax is busy
One-touch dials		40 locations for one-touch auto dialling of pre-stored numbers
Speed dials		300 locations for two-touch auto dialling of pre-stored numbers
Group dials		Up to 6 groups
Fax / Tel switch		Automatic recognition of fax and telephone reception
Super fine		Enables quality transmission and reception of very small print or line drawings
Grey scale		256 shades of grey
Delayed timer		Yes - up to 50
Page memory		Up to 500 pages (ITU-T Test Chart No 1)
Broadcasting locations		Send the same fax message to up to 390 pre-programmed numbers
Batch transmission		Stores documents for the same location in the machines memory for transmission in a single call
Auto reduction		Automatically reduces a received fax to fit on to a single sheet of A4
Error correction mode		Where machines share ECM, it resends the page(s) of a document where an error has occurred
Fax forwarding		Sends a fax received in memory to another pre-programmed fax number
Remote access		Allows the user to remotely access their machine by using another touch-tone phone
Fax retrieval		Allows the user to retrieve fax messages using another touch-tone phone
PBX		Enables compatibility with PBX's that use Time Break Recall
Duplex fax	Standard	On MFC-8840D and MFC-8840DN

### Weights & Dimensions

Dimensions / weight	With Carton Without Carton With Carton Without Carton	MFC-8440 MFC-8440D/MFC-8840DN	567(w) x 628(d) x 575(h) mm / 21.8kg 532(w) x 444(d) x 469(h) mm / 16.6kg 567(w) x 628(d) x 575(h) mm / 23.3kg 532(w) x 444(d) x 469(h) mm / 18.1kg
---------------------	--	----------------------------------	--

### Consumables & Options

Toner	Standard High Yield	TN-3030 - approx 3,500 pages with 5% coverage TN-3060 - approx 6,700 pages with 5% coverage
Drum		DR-3000 - up to 20,000 pages @ 1 page per job
Lower paper tray		LT-5000 - additional 250 sheets
Network print/fax server		NC-9100h - with 5 user licence NL-5 - optional 5 user licence†

### Other Information

Power consumption	Operating Sleep / Standby / Peak CPU Sleep	450W or less (Copying) 14W / 85W / 1090W or less 16W or less with MFC-8820DN
-------------------	--	--

†Up to a maximum of 25 users

MFC-8440 MFC-8840D MFC-8840DN	Scanner Resolution	TWAIN/ WIA Driver	Scan to Image	Scan to E-mail/OCR	Scan to File E-mail Server	Scan to E-mail Server	Brother PC-FAX Send	PC-FAX Receive	Printer Driver	Brother Control Centre	Remote Setup	NewSoft Presto Page Manager	ScanSoft™ PaperPort®
Microsoft Windows® 95 98/Me/2000 Professional NT4.0 Workstation XP	9600x9600 9600x9600 9600x9600 1200x1200**	TWAIN TWAIN TWAIN WIA	✓ ✓ ✓ ✓	✓ ✓ ✓ ✓	✓ ✓ ✓ ✓	✓ ✓ ✓ ✓	✓ ✓ ✓ ✓	✓ ✓ ✓ ✓	✓ ✓ ✓ ✓	✓ ✓ ✓ ✓	✓ ✓ ✓ ✓	✓ ✓ ✓ ✓	✓ ✓ ✓ ✓
Macintosh™ OS 8.6 OS 9.x OS 10.1 OS 10.2.1 or greater	9600x9600 9600x9600 - 9600x9600	TWAIN TWAIN - TWAIN	- - - -	- - - -	✓ ✓ ✓ ✓	✓ ✓ ✓ ✓	✓ ✓ ✓ ✓	- - - -	✓ ✓ ✓ ✓	- - - -	- - - -	✓ ✓ ✓ ✓	- - - -

MINIMUM SYSTEM REQUIREMENTS					AVAILABLE HARD DISK SPACE	
COMPUTING SYSTEM	OPERATING SYSTEM VERSION	PROCESSOR SPEED	MINIMUM RAM	RECOMMENDED RAM	for Drivers and ScanSoft™ Software	for NewSoft® Page Manager Software
WINDOWS®	95	Pentium 75MHz	24MB	32MB	180MB	
	98/98SE	Pentium 75MHz	24MB	32MB	180MB	
	Me	Pentium 150MHz	32MB	64MB	180MB	
	NT®4.0	Pentium 75MHz	32MB	64MB	180MB	
	2000 Professional	Pentium 133MHz	64MB	128MB	180MB	
MAC®	OS 8.6 - OS 9.2	All base models meet minimum requirements			200MB	
	OS 10.1				200MB	
	OS 10.2.1 or greater				200MB	



\* This feature is also available for Network connected users when the NC-9100h Print/Fax Server is installed. \*\* Brother Scanner Utility enables enhancement up to 9600 x 9600dpi

Contact:

At your side.  
**brother**

### Brother UK Ltd

Audenshaw, Manchester M34 5JD

Tel:0870 830 4000 (National Rate Call) Fax:0870 830 4031

Web-site: [www.brother.co.uk](http://www.brother.co.uk)

Your calls to us may be monitored or recorded for training purposes.

Specification correct at time of going to print. Brother is a registered trademark of Brother Industries Ltd.

Brand product names are registered trademarks or trademarks of their respective companies.

ZLFTMFC8440SERIESU1 DXG 05/04

At your side.  
**brother**

MFC-8440  
MFC-8840D  
MFC-8840DN



- Laser Printer
- Laser Fax
- Laser Copier
- Colour Scanner

### MFC-8440

- Optional Network Interface

### MFC-8840D

- Duplex Printing as Standard
- Optional Network Interface
- Multi-purpose Tray

### MFC-8840DN

- Duplex Printing as Standard
- Multi-purpose Tray
- Network Interface as Standard



Always at your side

[www.brother.co.uk](http://www.brother.co.uk)

<http://solutions.brother.com/index-eu.html>



PRINT

FAX

COPY

SCAN

# Four essential functions...

## Laser Printing

The laser printing performance is outstanding. It's fast: up to 20 pages per minute and the quality is pin sharp with a printing resolution of up to 2400x600 dpi. There's a generous 32MB of memory as standard, with the option to expand up to 160MB. It features both PCL®6 and BR-Script 3 (PostScript 3 language) emulations. The choice of parallel, USB 2.0 and optional Network means that connectivity isn't a problem. Secure print for Windows® users ensures confidential documents remain that way.

## Laser Faxing

An essential communications tool, this machine offers an impressive laser fax performance which includes faxing bound documents using the flatbed scanner. A modem speed of 33.6kbps means that faxes can be sent in as little as 2 seconds per page. It has a combined 'out of paper' and 'fax transmission' memory facility that allows up to 500 pages to be stored.† 40 one-touch numbers can be dialled quickly and easily, as can a further 300 speed dial numbers. Memory security ensures that private and confidential means just that.

†ITU-T Test Chart No.1

## Laser Copying

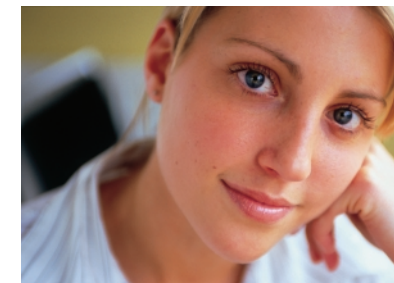
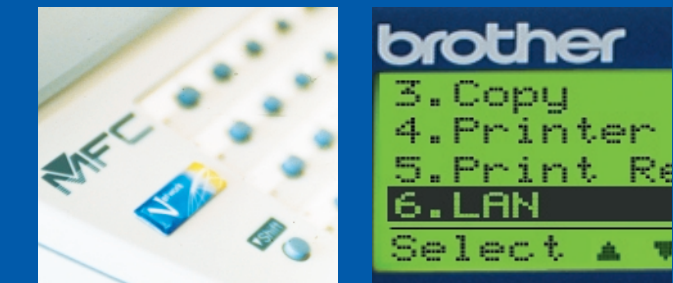
The performance as a desktop copier is consistently impressive. The flatbed design comfortably accommodates A4 and legal sized originals, whilst the automatic document feeder is capable of handling up to 50 A4 sheets. It has a paper capacity of up to 250 sheets as standard and this can be expanded to up to 500 sheets with the optional cassette tray (LT-5000). Up to 99 copies can be generated at one time and stack and sort functions ensure that your copies are presented exactly how you'd like them. In addition to this, 2 in 1 and 4 in 1 scale options enable you to maximise your paper efficiency.

## Network Connectivity as standard

The MFC-8440 and MFC-8840D offer an optional NC-9100h Print/Fax Server, with this feature coming as standard on the MFC-8840DN. This Network Connectivity enhances your machine into a workgroup MFC and has been specifically designed to ensure effortless implementation into the majority of networks and supporting industry standard speed (10/100BaseTX) and protocols (TCP/IP/IPX/SPX/AppleTalk).

### For the User

- **Network Printing**  
The NC-9100h offers Network printing functionality across the most popular protocols and platforms including Microsoft Windows®, Macintosh™, Novell, Unix and Linux operating systems.
- **Network scanning**
- Scansoft PaperPort with 5 user licence
- Brother control centre for effortless Network Scanning
- Scan to key functionality  
Further optional 5 user licence agreements to extend workgroup capability up to a maximum of 25 users
- **Network PC Fax**  
Allows unlimited users to send faxes from their desktop applications



## Colour Scanner

An increasingly popular function. Scans can be generated through the flatbed or the auto document feeder. The 'Scan' key offers flexibility by enabling you to scan directly to OCR, E-mail, Image or File. The resolution is high at up to 9600x9600 dpi (Interpolated). Besides these four main functions, this all-in-one machine also offers: Simultaneous operation, which means that, for example, you can start scanning while a print-out is being generated or print a document whilst sending a fax. A large, five line back-lit display helps make operation simple – as do the clear instructions it shows. Back-lit keys for Fax, Copy and Scan enable instant access to each function.



MFC-8440 Without / with lower tray  
■ Optional Network Interface



MFC-8840D Without / with lower tray  
■ Duplex printing as standard  
■ Optional Network Interface



MFC-8840DN Without / with lower tray  
■ Duplex printing as standard  
■ Network Interface as standard

### TCO 99 Certification

Responsibility for employee welfare has never been more critically discussed than right now. Nor is there any escaping it, the onus for environmental improvement in the workplace is most definitely on the employer. Increasingly, as a policy of 'green procurement' influences buying decisions, products that are people friendly and environmentally sound are the products of choice. And that's where Brother can help.



Working hand in hand with TCO - the organisation that campaigns globally for people friendly, environmentally sound and safer equipment for the workplace - Brother is developing office equipment designed to safeguard your employees.

Equipment designed with you, your employees - their welfare - and your business in mind. All products in this range are TCO approved.



## Software

Brother supplies industry standard software to enhance the key functions of your machine:

- **Scansoft Paperport®**  
Turns piles of paper and photos into organised digital files that you can quickly find, use and share.
- **OCR software supplied\***  
Scan a document and this software allows you to edit the text in a digital format.
- **Brother PC-Fax software\***  
Send and receive faxes directly from your PC.
- **Remote set up utility\***  
Configure the settings of your machine from your PC.
- **Presto! PageManager for Macintosh™ including OCR\***  
Document management software for Macintosh™ users including OCR.

\* See driver table for details on your operating system.



MFC-8440  
MFC-8840D  
MFC-8840DN

All-in-one machines



At your side.  
**brother**®