

# Evaluator Guide

CopyCentre® C123 / C128

WorkCentre® M123 / M128

WorkCentre® Pro 123 / 128



## ABOUT THIS GUIDE

*This guide will introduce you to, and aid in your evaluation of, the CopyCentre C123/C128 digital copier (with optional fax), WorkCentre M123/M128 multifunction (with optional fax) and WorkCentre Pro 123/128 advanced multifunction, including copy, print, fax and scan.*

## CONTENTS

### Section 1 – Product Overview

Product Overview . . . . .	3
Configurations/Options . . . . .	4

### Section 2—Evaluating Multifunction Devices

*Suggests topic features to look for in products of this class, how to evaluate those features, and how the Xerox C123/C128/M123/M128/WorkCentre Pro 123/128 family of products measures up.*

Ease of Use . . . . .	6
Leading-Edge Features . . . . .	7
Technological Advancements . . . . .	8

### Section 3 – Competition, Configurations, Specifications, Options and Supplies

Competitive Comparisons . . . . .	9
Configuration Summary . . . . .	10
Specifications . . . . .	10
Additional Information Sources . . . . .	11

## SECTION 1

# Product Overview

The CopyCentre C123/C128 digital copier, WorkCentre M123/M128 multifunction and WorkCentre Pro 123/128 advanced multifunction are a leading-edge family of office machines from Xerox. Available at three feature-rich levels, these products combine ease of use with technological advancements to simplify your workday, day after day.

### UNIQUELY SIMPLE

- Smart paper trays sense paper size and automatically match the requirements of the print application.
- Short paper path makes paper handling extremely reliable—even for heavy or specialty papers.
- Industry-leading user interface reduces steps to complete everyday jobs.
- Keeps work flowing with program-ahead capabilities to perform multiple tasks simultaneously.

### LEADING-EDGE FEATURES

- The printing option offers 1200 x 1200 dpi resolution, an optional 20 GB print hard drive and true Adobe® Postscript® 3™ for maximum performance in a busy, shared environment.
- Save and store jobs on the device and print/copy them when you need them.
- Xerox MeterAssistant™ tool automatically submits your meter reads with no user intervention, increasing your billing accuracy and enabling a built-in audit process.
- Xerox SuppliesAssistant™ tool manages your supplies usage and ordering to ensure you have the right supplies on hand at any time.
- CentreWare® Scanning Services software lets you move paper documents into a digital workflow and quickly access, store or distribute them to anyone, anywhere, in virtually any format.
- Special transparency feature delivers transparencies and handouts in the same job.

### TECHNOLOGICALLY SAVVY

- Best-in-class scanning solutions convert hardcopy into digital documents and distribute them anywhere: e-mail, PC desktop, file/server, Internet fax.
- Scan to PC Desktop™ software lets you move documents into word processing, spreadsheets and database applications for editing, distribution and storage...saving time, money and effort.
- Secure print, secure fax and encrypted data transmission protect mission-critical information.
- CentreWare® Web software proactively manages an entire enterprise-wide print environment regardless of manufacturer. It allows you to closely monitor your system to ensure everything is working smoothly.
- Easily set up, monitor and manage remote devices from your desktop using CentreWare® Internet Services software.

## CONFIGURATIONS AND OPTIONS

There are three standard configurations, each of which has two speed choices.

### CopyCentre C123/CopyCentre C128 digital copier (with optional fax)

Standard Configuration includes:

- 23/28 copies per minute (letter/A4)
- First copy out in less than 4.5 seconds
- Two 500-sheet paper trays and one 100-sheet bypass tray
- 500-sheet output tray
- Automatic duplexing
- 600 x 600 dpi
- A multitude of special features, including Build Job, Transparencies + N-Sets, Multiple-Up, Booklet Creation, Repeat Image, Posters, Covers, Book Copy

Optional Accessories include:

- Walk-up 33.6 Kbps fax with V34 + JBIG compression and presets up to 600 dpi
- Two additional 500-sheet paper trays or a high-capacity tandem tray (800 + 1200 sheets)
- 1,000-sheet finisher/stapler

### WorkCentre M123/WorkCentre M128 multifunction (with optional fax)

Standard Configuration includes:

- 23/28 pages per minute (letter/A4)
- First copy out in less than 4.5 seconds
- Two 500-sheet paper trays and one 100-sheet bypass tray
- 500-sheet output tray
- Automatic duplexing
- 1200 x 1200 dpi (print)/600 x 600 dpi (copy)
- USB 2.0, parallel, 10/100 BaseT Ethernet, IEEE 1284, optional 802.11b/g (via 3rd party)
- A multitude of special copying features, including Build Job, Transparencies + N-Sets, Multiple-Up, Booklet Creation, Repeat Image, Posters, Covers, Book Copy
- Print features including Watermark, Covers and Posters make complex print jobs simple, as do optional advanced features like Secure Print, Delay Print, Annotation and more

Optional Accessories include:

- Walk-up 33.6 Kbps fax with V34 + JBIG compression and presets up to 600 dpi
- Two additional 500-sheet paper trays or a high-capacity tandem tray (800 + 1200 sheets)
- 1,000-sheet finisher/stapler
- 20 GB hard disk drive
- True Adobe® PostScript® 3™

**WorkCentre Pro 123/WorkCentre Pro 128  
advanced multifunction with copy, print, scan, fax, internet fax and email**

Standard Configuration includes:

- 23/28 pages per minute (letter/A4)
- First copy out in less than 4.5 seconds
- Two 500-sheet paper trays and one 100-sheet bypass tray
- 500-sheet output tray
- Automatic duplexing
- 1200 x 1200 dpi (print)/600 x 600 dpi (copy)
- USB 2.0, parallel, 10/100 BaseT Ethernet, IEEE 1284, optional 802.11b/g (via 3rd party)
- A multitude of special copying features, including Build Job, Transparencies + N-Sets, Annotation, Multiple-Up, Booklet Creation, Repeat Image, Posters, Covers, Book Copy
- Print features including Secure Print, Delay Print, Sample Set, Annotation, Watermark, Covers, Posters, Remote Device Management Tools
- Scan resolution up to 600 dpi
- Scan to: email (LDAP enabled), server (FTP or SMB), Mailbox, Desktop, Templates and optional I-Fax
- Walk-up 33.6 Kbps fax with V34 + JBIG compression and presets up to 600 dpi
- Optical Character Recognition (OCR) and Image Editing Software
  - ScanSoft® OmniPage® SE2.0
  - ScanSoft® PaperPort® SE9.0

Optional Accessories include:

- Two additional 500-sheet paper trays or a high-capacity tandem tray (800 + 1200 sheets)
- 1,000-sheet finisher/stapler



*The WorkCentre Pro 128 advanced multifunction shown with high-capacity tandem tray and 1,000-sheet finisher/stapler.*

## SECTION 2

# Evaluating Multifunction Devices

### EVALUATION CRITERIA

As the company that invented laser printing, Ethernet networking, and the first digital multifunction product (MFP), Xerox has invested years of research and development in designing the most productive office devices in the industry. This experience has positioned Xerox as the recognized leader in office MFP design and performance. Based on our in-depth understanding of customer needs in the office, Xerox recommends the following criteria be considered in the evaluation process of a shared MFP:

#### EVALUATE

#### EVALUATE EASE OF USE

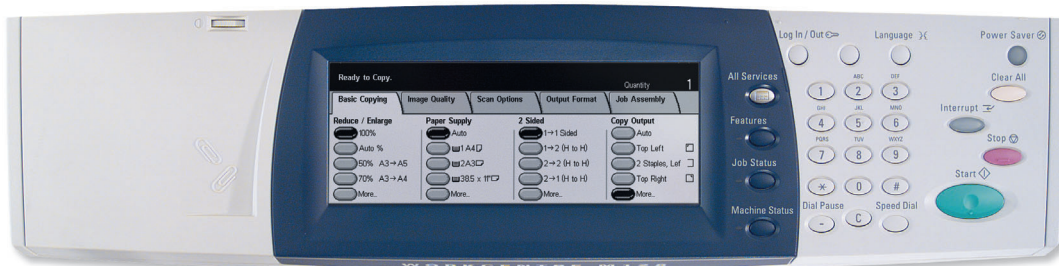
Consider such things as walk-up convenience. Is the user interface simple to understand and consistent from one major feature to the next? Are the drivers easy to install and intuitive to use? Can features be used at the same time or are users forced to wait for the device to be “free”? Can you monitor the device functions from your desktop? Are the scanning and faxing features powerful enough for your busy workgroup?

#### ADVANTAGE XEROX

#### HOW XEROX COPYCENTRE C123/C128/ WORKCENTRE M123/128/ WORKCENTRE PRO 123/128 EXCEEDS THE EASE OF USE REQUIREMENT

The front panel is not cluttered with lots of buttons, just the ones you need. Select the desired function and the intuitive user interface provides the advanced feature options for that function.

Intuitive operation doesn't stop at the front panel. Print driver options are clearly laid out and simple to select. Multiple “smart” paper trays improve media handling, and a short paper path increases efficiency and reliability. Plus, keep work flowing with program-ahead capabilities to perform multiple tasks simultaneously.



**EVALUATE****EVALUATE LEADING-EDGE FEATURES**

If you had your choice between a machine that did the bare minimum, or a machine that did the basics **plus** plenty of extras to make everyday tasks easier—for around the same price—which would you choose? When evaluating multifunction products, make sure you investigate how many features you get for the money.

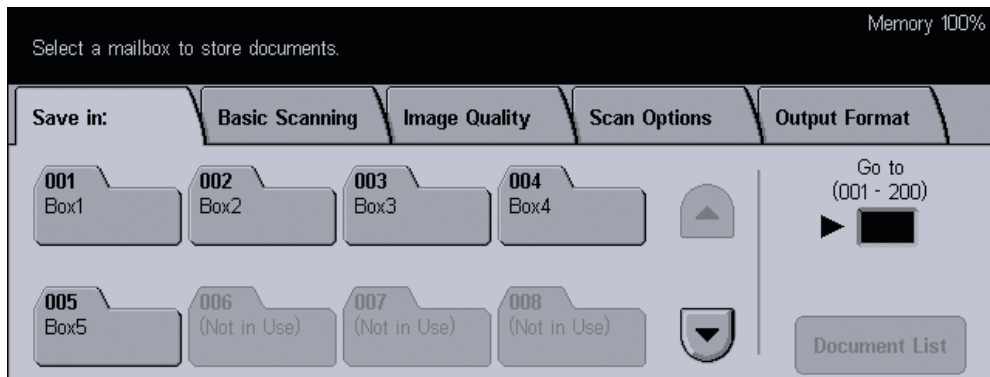
**ADVANTAGE  
XEROX****HOW XEROX EXCEEDS THE LEADING-EDGE FEATURES REQUIREMENT**

Xerox CopyCentre C123/C123/WorkCentre M123/M128/WorkCentre Pro 123/128 offers more bang for the buck compared to other multifunction machines in its class. For example, cutting-edge copy features such as Build Job, Transparencies + N-Sets, Scan Ahead, Multiple-Up, Booklet Creation, Repeat Image, Posters, Covers and Book Copy come standard on all configurations, and Watermark, Covers, Posters and Remote Device Management Tools are standard on the WorkCentre M123/M128 and WorkCentre Pro 123/128. Secure Print, Delay Print, Job Based Accounting Enablement, Security Overwrite, and advanced scanning capabilities available with the WorkCentre Pro version.

Also, high-end features such as true 1200 dpi print resolution, 256 MB standard memory on the WorkCentre and an additional 20 GB hard drive with the WorkCentre Pro, and up to 50 scans per minute put Xerox leaps and bounds ahead of the competition.

**Three additional powerful, yet easy-to-use, features are available with the WorkCentre Pro:**

1. Now store all of your common documents and forms in mailboxes at the device.



2. The ability to scan to a server (FTP or SMB) with the touch of a button makes scanning easy and convenient.
3. The WorkCentre Pro print driver has LAN fax (PC Fax) technology built-in to save time and long lines at the fax machine.

## EVALUATE

## EVALUATE TECHNOLOGICAL ADVANCEMENTS

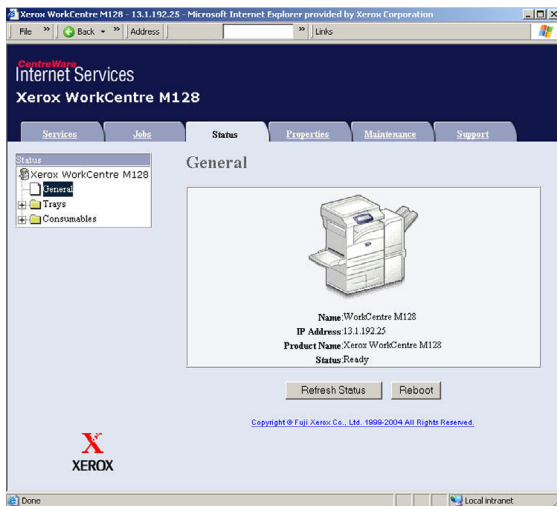
To keep up with the demands of a technologically accelerated workplace, you need robust, high-performance office machines. Considerations such as security features, remote device management and digital workflow should be available and scalable to your workgroup.

## ADVANTAGE XEROX

## HOW XEROX EXCEEDS THE TECHNOLOGICAL ADVANCEMENTS REQUIREMENT

The Xerox CopyCentre C123/C128/WorkCentre M123/M128/WorkCentre Pro 123/128 family of office products streamline and integrate processes to simplify device management and increase productivity. Plus, their technological savvy is scalable to a variety of workgroups and product configurations.

Easily manage, configure and diagnose remote devices from your desktop using CentreWare Internet Services, and move paper documents into a digital workflow using CentreWare Scanning Services. With software for WorkCentre Pro 123/128, you can scan to a variety of locations, including email, server (FTP or SMB), Mailbox, desktop, templates and I-Fax, making document distribution a breeze to anyone, anywhere.



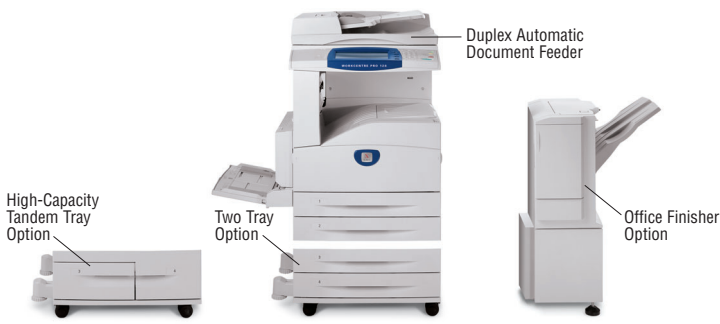
Lastly, enjoy best-in-class document management and Optical Character Recognition (OCR) software from ScanSoft. ScanSoft OmniPage SE2.0 and ScanSoft PaperPort SE9.0 software are available with WorkCentre Pro.



## SECTION 3

# Competitive Comparison

	Xerox WorkCentre Pro 128	Canon imageRUNNER 2800	Ricoh Aficio 2027	Sharp AR280N
<b>GENERAL SPECIFICATIONS</b>				
Speed (Letter / A4)	23 / 28 ppm	28 ppm	27 ppm	28 ppm
Speed (Ledger / A3)	13 / 15 ppm	16 ppm	Info. not available	14 ppm
Warm-up time	12 sec.	12 sec.	15 sec.	80 sec.
Duplex (Manual / Auto)	Auto	Auto	Auto	Auto
ADF Capacity	50 sheets	50 sheets	50 sheets	50 sheets
Std. / Max. Paper Capacity / Max. Trays	1100 / 3100 / 5	1050 / 4550 / 6	1100 / 3100 / 5	500 / 3100 / 5
Finishing Std. / Opt.	Opt: Finisher	Opt: Internal Finisher, Saddle Finisher, Puncher Unit	Opt: Finisher	Opt: Finisher, Saddle Stitch
Monthly Duty Cycle	Up to 100K	100K	45K	160K
Hard Disk Drive	20GB	5.1GB Shared	20GB Shared	5GB
<b>COPYING</b>				
Max. Copy Resolution	600 dpi	600 dpi	600 dpi	600 dpi
FCOT from Platen	4.5 sec.	5.8 sec.	4.9 sec.	5.3 sec.
Std. / Max. Pre-collation RAM	128 MB / 512MB	128MB / 128MB Shared	64MB / 192MB	64MB / 320MB
Max. Original Copy Size	11.7" x 17"	11.7" x 17"	11.7" x 17"	11.7" x 17"
<b>NETWORK PRINTING</b>				
Network Interface Std./Opt.	Std: IEEE 1284, 10/100BaseTX, USB2.0, 802.11b	Std: IEEE 1284, 10/100BaseTX, Opt:Token Ring	Std: IEEE1284, 10/100BaseTX	Std: 10/100BaseT, IEEE 1284, Parallel
Network Protocol	TCP/IP, IPX/SPX, EtherTalk, AppleTalk, NetBEUI, RFC1867, Port9100	TCP / IP, IPX / SPX, AppleTalk, SMB	TCP / IP, IPX / SPX, AppleTalk	TCP / IP, IPX / SPX, AppleTalk
PDL, PCL (Opt.)	PCL6, (PS3)	PCL 5e / 6, PostScript Clone	PCL 5e / 6, (PS3)	PCL 5e / 6, PostScript Clone
Std. / Max. Print Memory	256MB / 512MB	Shared	Shared	Shared
Max. Print Resolution	1200 dpi	600 dpi	600 dpi	600 dpi
<b>SCANNING</b>				
Resolution	600 dpi	600 dpi	600 dpi	600 dpi
Speed	50 spm	28 spm	27 spm	28 spm
<b>FAXING</b>				
Max. Fax Modem Speed / Compression	33.6 KBps / Super G3	33.6 KBps / Super G3	33.6 KBps / Super G3	33.6 KBps / Super G3
Data Compression Method	JBIG, MH, MR, MMR	MH, MR, MMR, JBIG	MH, MR, MMR	MH, MR, MMR, JBIG
Std. / Max. Fax Memory	128MB / 256MB	Shared	8MB / 32MB	Shared
Multi-Line Capability	None	None	Optional	None
Hard Quick Dials / Speed Dials	70 / 500	0 / 200	0 / 500	200 / 500
<b>CONSUMABLES</b>				
Toner / Drum	30K / 60K	15K / Info not available	11K / 60K	Info not available



## CONFIGURATIONS AND SPECIFICATIONS

CONFIGURATIONS	CopyCentre® C123	CopyCentre® C128	WorkCentre® M123	WorkCentre® M128	WorkCentre® Pro 123	WorkCentre® Pro 128
<b>Speed</b>	23 ppm	28 ppm	23 ppm	28 ppm	23 ppm	28 ppm
<b>Duty cycle</b> (pages/mo)	Up to 75,000	Up to 100,000	Up to 75,000	Up to 100,000	Up to 75,000	Up to 100,000
<b>Paper handling</b>	Two 500-sheet Trays, 100-sheet Bypass Tray (Total 1,100 sheets)					
Paper trays	Standard					
	Optional					
	Two Tray Option 500 + 500 sheets (Total 2,100 sheets)					
	High-Capacity Tandem Tray Option 800 + 1200 sheets (Total 3,100 sheets)					
Paper output	500 sheets, Automatic two-sided (optional)					
Finisher (optional)	Finisher/Stapler (1,000-sheet, 50 sheets stapled, 3-position stapling)					
<b>Copy</b>						
First page out time	< 4.5 seconds					
Resolution	600 x 600 dpi					
<b>Print</b>						
First page out time	NA		< 4.5 seconds			
Resolution	NA		1200 x 1200 dpi			
Processor	NA		Power PC 300 MHz			
Connectivity	NA		USB 2.0, Parallel, 10/100 BaseT Ethernet, IEEE 1284, optional 802.11b/g (via 3rd party)			
<b>Fax</b>						
Speed	Optional				33.6 Kbps with V34 + JBIG compression	
Compression	Optional				JBIG, MMR/MR/MH	
Resolution	Optional				Presets up to 600 dpi	
<b>Scan</b>						
Resolution	NA				Up to 600 dpi	
Scan to e-mail	NA				Yes (LDAP enabled)	
Scan destinations	NA				Scan to: E-mail, Server (FTP or SMB), Mailbox, Desktop, Templates and I-Fax	
<b>I-Fax</b>	NA				Optional with Scanning	

### Copying

Speed: 23/28 copies per min. (letter/A4)  
 Resolution: 600 x 600 dpi  
 First Copy Out: < 4.5 seconds  
 Full Duplex Option: Yes (1-2, 2-2, 2-1)

#### Reduce/Enlarge

25 – 400% in 1% increments  
 Productivity: Scan Once Print Many, Electronic

Pre-Collation, Program Ahead  
 Multiple Copies: Up to 999 copies of multiple page originals

Audiron: up to 500 accounts  
 Option: Foreign Device Interface

#### Device Memory

C123/C128: 128 MB

### Printing (WorkCentre or WorkCentre Pro)

Technology: Laser black-and-white

Speed: 23/28 ppm Letter/A4

Resolution: 1200 x 1200 dpi

First Print Out: < 4.5 seconds

Duplex Option: Yes

Page Description Language (PDL): PCL6; Adobe® PostScript® 3™

Print Drivers: Windows 98/NT4.0/2000/Me/XP

Interfaces: USB 2.0 standard; Parallel Port, IEEE 1284, 10/100baseT Ethernet, Wireless LAN (IEEE 802.11) via third party wireless equipment

#### Device Memory

M123/M128: 256 MB

Option: 20GB Hard Disk Drive

### Scan (WorkCentre Pro)

Scan Resolution:

Optical Resolution: 600 x 600 dpi

Depth: 1 bit

Text and Halftone: 8 bit

Bundled OCR Software: PaperPort SE 9.0, OmniPage SE v2.0

### Faxing

Transmission Speed: 33.3 Kbps w/JBIG

Communication Mode: Half Duplex

Modem Speed: 33.6 Kbps

Data Compression: JBIG, MMR/MR/MH

Resolution: pre-sets up to 600 dpi

#### Dialing

Speed Dials Up to 500 locations

Group Dials Up to 50 supported

#### Fax Features

Halftones: 256 levels

Secure Fax: send and receive

PC Fax (LAN)

### Email (WorkCentre Pro)

Scan to SMTP addresses

Local user access and authentication

Device network access and authentication

Guest mode access is available

Network address list search via LDAP

### Media Handling

#### Input Paper Capacity

Standard: Two Trays (500 + 500 sheets);

Optional: Two Trays (500 + 500 sheets) or

High-Capacity Tandem Tray (800 + 1200 sheets)

Bypass Tray: 100 sheets

Auto Tray Switching Capable

#### Paper Size

Minimum: 5 in. x 7 in./148 x 210 mm

Maximum: 11 in. x 17 in./297 x 420 mm

#### Paper Weight

Tray 1: 16 lb. bond – 60 lb. index/60 gsm – 105 gsm

Tray 2, 3, 4: 16 lb. bond – 110 lb. index/60 gsm – 216 gsm

Bypass Tray: 16 lb. bond – 110 lb. index/60 gsm – 216 gsm

Document Handler: 50 Sheets

Output Tray Capacity: 500 Sheets

Media Types: Paper, envelopes, labels, transparencies

Finisher: 1,000-sheet, 50 sheets stapled, 3-position

stapling

### Physical Dimensions (WxDxH):

With stand (no finisher): 52 in. x 47 in. x 45 in. /

1340 x 1185 x 1143 mm

With Finisher and Hi-Capacity Tandem Tray Option:

84 in. x 47 in. x 60 in. / 2140 x 1185 x 1524 mm;

Weight: 139 lb / 63.5 kg; up to 301 lb / 136.53 kg

### Device Management

CentreWare Internet Services (Networked Products)

CentreWare Web, CentreWare DP, NDPS and

HP Openview

### Operating Environment

#### Temperature

Maximum Range: 32° – 95°F/10° – 35°C

Recommended Range: 60.8° – 86°F/16° – 30°C

#### Humidity

Maximum Range: 15 – 85%

Recommended Range: 30 – 70%

WorkCentre Pro 123/128: 256 MB w/20GB hard drive

#### Electrical

Power: 110 VAC, 50/60 Hz or 220 VAC 50/60 Hz

Power Consumption:

Average: 1300 watts

Power Saver Mode: 4.7 watts

Energy Saver: ENERGY STAR® Compliant

### Supplies

#### Approximate Yields

Toner – Starter kit: 11,000 images\*; Replacement

kit: 30,000 images\*

Drum Cartridge – 60,000 images\*

\*Capacities are approximate, based on 5% coverage on

a letter/A4-sized page and dependent on customer job

mode run length

### Agency Approvals

Safety: UL Safety

CSA Safety



## ADDITIONAL INFORMATION SOURCES

### Inbox Items (shipped with product)

- Quick Reference Guide
- Power Cord

### CD Pack containing:

- Customer Documentation
- PCL Print Driver and other utilities
- Postscript Drivers
- Printer Management Solutions
- Scan to PC Desktop
- Xerox CentreWare® Scanning Services

CopyCentre®  
C123/C128

WorkCentre®  
M123/M128

WorkCentre® Pro  
123/128

---

## Questions? Comments? Problems?

*If you have any questions or issues with your evaluation of this multifunction product, please contact your Xerox sales representative or the Xerox Office Help Desk at: U.S. AND CANADA 1-800-ASK-XEROX  
Or visit us on the web at [www.xerox.com/office](http://www.xerox.com/office)*



© 2004 XEROX CORPORATION. All rights reserved. XEROX® The Document Company®, the digital X®, WorkCentre®, CopyCentre® and FreeFlow™ are trademarks of or licensed to XEROX CORPORATION. In support of Xerox's environmental leadership goals, these models may contain some recycled components that are reconditioned. Support Center Practices (SCP) Certification is a registered trademark of Service Strategies Corporation. ENERGY STAR® is a U.S. registered mark. As an ENERGY STAR® Partner, Xerox Corporation has determined that these products meet the ENERGY STAR® guidelines for energy efficiency. Terra Choice Environmental Services, Inc., of Canada has verified that these products conform to all applicable Environmental Choice EcoLogo requirements for minimized impact to the environment. Product information and/or specifications are subject to change without notice. Printed in U.S.A. 10/04 610P720560 W28EG-01UA