



colour laser printer

Phaser 6100 Reviewer Guide



ABOUT THIS GUIDE

This guide will introduce you to the Xerox Phaser 6100 Colour Printer and aid you in your printer evaluation process.

CONTENTS

Section 1 – Introducing the Xerox Phaser 6100 Colour Printer

Product Overview	1
Configurations	2
Set-up and Installation	3
Easy to Use	4
Easy to Manage	6
Cost of Ownership	6

Section 2 – Specifications, etc.

Specifications	7
Print Quality Modes	7
Supported Paper Sizes	7
Additional Information Sources	8

SECTION 1

Introducing the Xerox Phaser 6100 Colour Laser Printer



PRODUCT OVERVIEW

The Phaser 6100 colour laser printer is a great fit as a Small Workgroup/Small Business Printer. It ships with all the necessary features to be a fully functional printer right out the box. The Phaser 6100 printer has fast black and white speeds to make it suitable for the office that is looking for a printer to begin its migration to colour. And the Phaser 6100 printer delivers outstanding quality colour printing in both the 600 dpi Standard mode and the 1200 dpi Enhanced mode. The Phaser 6100 printer is all about value, print quality and ease-of-use.

Value Packed

The Phaser 6100 printer ships with everything needed to print and to be immediately productive:

- 21 ppm black and white, 5 ppm colour speed
- Automatic two-sided printing (duplex) standard. Many entry-level colour laser printers cannot print auto duplex.
- 64 MB Memory. Twice what others ship in this class of printer.
- A 250-sheet real paper tray plus a 100-sheet multi-purpose tray; 250-sheet face-down output tray.
- Standard one year Depot Warranty.
- Starting price of under €599* for USB/Parallel configuration and under €749* for network configuration.

Excellent Print Quality

- Ultra fine toner and Phaser TekColor® delivers vivid, realistic colours of outstanding quality.
- Xerox Phaser colour experience and imaging technology “inside”.
- Print at 600 dpi Standard mode for crisp business colour or at 1200 dpi Enhanced mode for photo-quality halftone images.
- 1200 dpi Enhanced mode does not sacrifice performance.
- Two-sided colour prints at full speed.
- Powerful colour calibration tools standard.

User friendly

- Exceptionally easy to install and set up.
- Compact and ergonomically designed to fit well in any office.
- Intelligently engineered; consumables located for quick and easy access.
- Very quiet operations. Will not distract users, even in very close quarters.
- Embedded Web Server (network model) for easy management via any web browser.

* RRP

Configurations



PHASER 6100BD

The Phaser 6100BD comes packed with many performance and productivity features standard:

- 21 ppm black and white, 5 ppm colour (with auto switching)
- Automatic two-sided printing (duplexing) standard
- 1200 dpi print quality
- Very quiet operation (48 dB printing)
- First-page-out 15 seconds black, 24 seconds colour
- 120 MHz processor
- 64 MB memory
- 600 dpi Standard mode and 1200 dpi Enhanced mode, at full engine speed
- Custom print sizes from 90 x 140 mm to 216 x 356 mm
- USB 2.0 and parallel connectivity standard
- 350-sheet input capacity (expandable up to 850)
- 250-sheet output capability
- TekColor® technology
- Booklet Printing
- Watermark and Overlay printing
- N-Up Printing
- Cover Sheets
- Auto Tray Select
- Consumable life reporting
- Built-in links for support and on-line supplies ordering
- Power Saver mode
- One year on-site warranty

PHASER 6100DN

The Phaser 6100DN comes with all the features of the Phaser 6100BD plus:

- 10/100BaseTX Ethernet connectivity
- CentreWare® IS Embedded Web Server for web-based printer management
- PrintingScout alert notification
- Online technical support

OPTION

A 500-sheet feeder is available for either the 6100BD or DN.

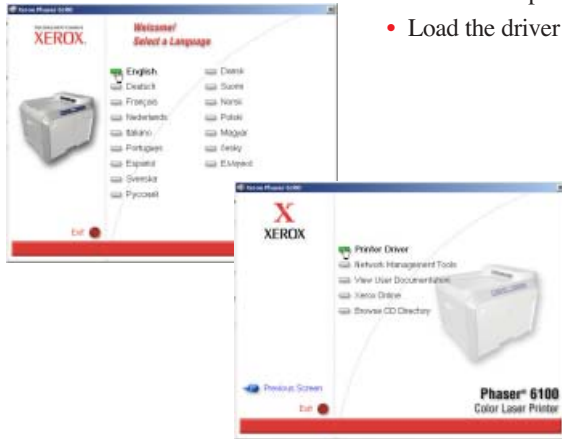
Phaser 6100BD cannot be upgraded to a Phaser 6100DN

SETUP AND INSTALLATION

Setup

Unpack and set up the printer using the Setup Guide in the box.

- Install the imaging unit, transfer belt and the four toner cartridges.
- Load the paper tray(s).
- Connect an interface cable (USB, parallel or Ethernet) and plug in the power cord.
- Turn on the printer.
- Load the driver software onto your computer(s).



Installing Driver Software Overview

The Phaser 6100 Colour Laser Printer's Driver Installation process is designed to provide an easy and consistent installation process from all software sources, regardless of platform. Features include:

- Automatic discovery of the printer on your network
- Automatic port creation
- Automatic printer model and feature detection
- Automatic driver installation

The Phaser 6100 printer's driver is available from:

- CD-ROM
- CentreWare IS Embedded Web Server
- Xerox Web Site

Step-by-Step Installation from the CD-ROM (for Windows systems)

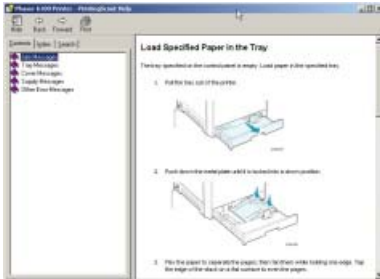
The **Install Printer Driver** link launches the Setup programme. Other links take users to Network Management Tools, User Documentation, Xerox Online, and Browse CD Directory.

The installer searches for a printer. It looks on physical ports on the computer, as well as on a network (if present) for TCP/IP printers. If a printer is found on the network (already has an IP address), it highlights the printer and gives you the option to install this printer or a different one. An Extended Search means that if a Phaser 6100 printer has been previously installed on another subnet, it will show up here as well.

The installation completes automatically, including electronic registration.

EASY TO USE

The following illustrations highlight the main features of the printer.



PrintingScout

When you send a document to the Phaser 6100 printer, PrintingScout monitors and reports any printer condition that can prevent a print job from completing successfully. A pop-up Help window provides appropriate how-to instructions, illustrations, and links to help end users quickly identify and resolve their own printing problems. This way, you'll go to the printer completely prepared – no surprises. And only Xerox printers can do this.

Toners

Installing toner cartridges is quick and easy. Simply open Cover A, replace the used toner cartridge, and close the cover. Even someone unfamiliar with the printer can see where the toners go and follow the simple instructions.



Routine Maintenance Items

The Imaging Unit and Transfer Belt are just as easily accessed for user replacement. The Imaging Unit and Transfer Belt have a capacity of up to 50,000 black images or 12,500 colour images. Mixed black and colour usage will vary the life span but average users should achieve approx. 23,000 pages. Replacement is simple and does not require a technician.

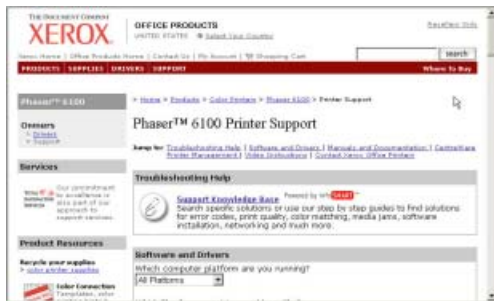


EASY TO USE (continued)

Control Panel

The two-line LED front panel display is simple and intuitive, providing useful information about the printer including:

- Information
- Page Layout
- Colour
- Maintenance
- Printer Setup
- Network Setup



Online Troubleshooting

Link to web-based support site that can provide in-depth technical and troubleshooting help.

Media Flexibility

The Phaser 6100 printer comes standard with a 250-sheet paper cassette tray and a multi-purpose tray that holds up to 100 sheets. Add the second paper feeder (500 sheets) for a total of 850 sheets of uninterrupted printing.

And the Phaser 6100 printer can print on a variety of paper types and sizes, such as plain paper, envelopes, labels, and transparencies.

- **Media Size:** You can use any size paper that fits easily within the paper adjusters of the multi-purpose tray, from 90 x 140 mm to 216 x 356 mm. The 250-sheet tray holds A/Letter and A4 sizes.
- **Media Weight:** Your printer supports paper weights from: 60 to 90 gsm bond for Tray 1 or optional Tray 2; 60 to 160 gsm bond, for the multi-purpose tray; and 75 to 90 gsm bond for 2-sided printing.



EASY TO MANAGE

CentreWare IS Embedded Web Server

The printer's built-in CentreWare IS Embedded Web Server is a web site inside the printer. It allows users to check the printer's status, job accounting, troubleshooting and more, using a web browser such as Netscape Navigator or Microsoft Internet Explorer. Users only need the printer's IP address to connect to the printer.

Management Tools

The Installation CD-ROM shipped with the printer includes:

- Setup utility — Set the printer's network IP address.
- User Manuals — Advanced user manuals provided in pdf format.
- Technical Support Link — Provides the latest printer information, software updates and printing technical support.

CentreWare Web Printer Management

CentreWare Web is the newest printer management tool in the CentreWare family. CentreWare Web is designed to provide enterprise management solutions for all devices connected to your network – not just Xerox. Install, troubleshoot, configure, and produce asset reports for all of your devices. Simply install CentreWare Web on MS Windows 2000 or later servers and gain access from anywhere on your network through any standard web browser.

COST OF OWNERSHIP

The fuser cartridge on the Phaser 6100 printer is covered by service during the warranty period and thereafter with a warranty extension (service contract), further reducing operating costs.

Bringing colour printing in-house also saves time and money. With fast first-page-out times and efficient print speeds there is no costly wasted time waiting around for the printer to deliver. Also note that the Phaser 6100 printer has a duty cycle of up to 35,000 colour prints per month – far in excess of most small workgroup requirements.

The Phaser 6100 colour laser printer is engineered to require a minimum of user interventions.

And Xerox offers high-capacity toner cartridges that last up to approximately 5,000 prints for colour and 7,000 for black and white (based on 5% coverage). The toner cartridges are easy to handle and easy to install into keyed slots in the printer. Less time spent taking care of the printer means more time printing.

** All-inclusive costs include: toners, imaging unit, transfer belt, and waste cartridge.*

SPECIFICATIONS

PHYSICAL DIMENSIONS

HEIGHT	WIDTH	DEPTH	WEIGHT
405 mm	510 mm	470 mm	35 kg

POWER

110–127 VAC, 50/60 Hz, 450 W avg. <30 W in Power Saver mode

220–240 VAC, 50/60 Hz, 450 W avg. <30 W in Power Saver mode

ENVIRONMENT

Temperature	50 – 90° F Operating
Relative Humidity	Operating: 20% – 80%
Noise Level	<40 dB standby, 48 dB running

PRINT-QUALITY MODES

PRINT-QUALITY MODE	DESCRIPTION
Standard	600 x 600 dpi
Enhanced	1200 dpi

SUPPORTED PAPER SIZES

TRAY	DIMENSIONS*	WEIGHT	CAPACITY**
TRAY 1/2			
Letter	216 x 279 mm	<ul style="list-style-type: none"> • 60 – 90 gsm bond for single-sided printing 	<ul style="list-style-type: none"> • 250 sheets of 75 gsm bond paper for Tray 1
A4	210 x 297 mm	<ul style="list-style-type: none"> • 75 – 90 gsm bond for duplex printing 	<ul style="list-style-type: none"> • 500 sheets of 75 gsm bond paper for Tray 2
MULTI-PURPOSE TRAY			
Minimum Size (custom)	90 x 140 mm	60 – 160 gsm	100 sheets of 75 gsm bond paper
Maximum Size (custom)	216 x 356 mm		
Transparency	Same minimum and maximum paper sizes as listed above.	Use only Phaser 35-Series Premium Transparency Film.	30 typical
Labels***		Thickness: 0.10 x 0.14 mm	10 typical
Envelopes		Up to 90 gsm	Up to 10

* The printer supports a wide range of media sizes. See "Printing on Card Stock or Custom Size Paper on page 2.21 of the User Guide.

** Capacity may vary depending on media weight and thickness, and environmental conditions.

*** Smoothness: 100 to 250 (Sheffield)

INFORMATION SOURCES

RESOURCE	LINK
To link to product and supplies information, download drivers, view documents, and access support information:	www.xerox.com/office
To access the troubleshooting knowledge base used by Xerox Customer Support staff:	www.xerox.com/office/6100infoSMART
To link to a colour resource for tools and information such as interactive tutorials, colour printing templates, helpful tips, and customised features to meet your individual needs:	www.colorconnection.xerox.com
To view technical support information:	www.xerox.com/office/6100support
To order Xerox supplies:	www.xerox.com/office/6100supplies
To find your local sales and support centre:	www.xerox.com/office/contacts
To view warranty information regarding your Xerox printer:	www.xerox.com/office/6100warranty
To view Material Safety Data Sheet information regarding your Phaser 6100 Colour Laser Printer:	www.xerox.com/office/msds



Questions? Comments? Problems?

If you have any questions or issues with your evaluation printer, please contact any one of these people to help you:

Technical:

Mark Anderson
+44 1628 553 000
mark.anderson@office.xerox.com

Public Relations:

Richard Thomas
+44 1628 553 000
richard.thomas@office.xerox.com



XEROX
Worldwide Partner