

XEROX®

Technology | Document Management | Consulting Services

Phaser® 6115MFP



print | copy | scan | fax

Phaser® 6115MFP Evaluator Guide



ABOUT THIS GUIDE

This guide will introduce you to the Xerox Phaser 6115MFP colour laser multifunction printer and help you in your evaluation process.

CONTENTS

Section 1 — Introducing the Xerox Phaser 6115MFP Colour Laser Multifunction Printer

Product Overview 1

Phaser 6115MFP Configurations and Options..... 2

Section 2 — Evaluating Colour Multifunction Printers

Evaluate Value and Productivity 5

Evaluate Convenience..... 7

Evaluate Installation and Management..... 9

Section 3 — Configurations, Specifications, Supplies, Support and Additional Information Sources

Configuration Summary 10

Specifications 11

Supplies, Options and Extended Service Agreements 11

Support and Additional Information Sources 12



SECTION 1

Introducing the Phaser 6115MFP Colour Laser Multifunction Printer

PRODUCT OVERVIEW

The Phaser 6115MFP multifunction printer is your all-in-one office solution. Easy to use and surprisingly affordable, it delivers the tools you need for fast-paced office productivity — printing, copying, faxing and scanning — in accurate, eye-popping colour.

Multifunction features — colourised

Get true-to-life colours that accurately reflect your desired results whether printing, copying, faxing or scanning.

- Colours jump off the page with a print resolution of 2400 x 600 dpi and PANTONE® Colour approved solid-colour simulations, adding visual impact to important office print jobs
- Add dynamic colour appeal to your work and get quick results with colour print speeds up to 5 ppm
- Up to 20 ppm black and white print speeds make short work of your black and white prints and copies

A pleasure to operate

A true office-pleaser, the Phaser 6115MFP multifunction printer provides a host of features that make setup simple and everyday use hassle-free.

- Xerox Installer software gets the Phaser 6115MFP on your network and ready for action in no time — without the help of IT
- Stay on top of print-job progress, see real-time paper-volume and toner-level status, and get quick access to online support from your desktop with CentreWare® IS Embedded Web Server
- Conveniently located front-panel access to all supplies means an end to awkwardly reaching behind the device to replace consumables
- Up to 700-sheet paper capacity means printing stays uninterrupted for longer

Easy on the budget

The Phaser 6115MFP multifunction printer is a do-it-all performer that's truly affordable.

- Reduce operating costs and streamline tasks for four business-critical office functions in one space-saving unit
- Choose between standard or optional high-capacity toner cartridges to manage your budget
- Three print mode settings — draft, standard and enhanced — let you choose how quickly your work is printed
- Optional two-sided output (standard on the D configuration) saves time and reduces paper costs

PHASER 6115MFP CONFIGURATIONS AND OPTIONS



PHASER 6115MFP/N STANDARD FEATURES

The Phaser 6115MFP/N comes standard with network printing, copying, scanning and faxing features

Print Performance

- Print Speed — Up to 5 ppm colour, 20 ppm black and white
- First-Page-Out Time — As fast as 23 seconds colour, 14 seconds black and white
- Resolution — Up to 2400 x 600 dpi
- Page Description Language — Host-based printing
- Print Features — Booklet printing, poster printing, N-up, watermarks, custom-size pages

Copy Performance

- Copy Speed — Up to 5 cpm colour, 12 cpm black and white
- First-Page-Out Time — As fast as 23 seconds colour, 14 seconds black and white
- Resolution — Up to 600 x 600 dpi
- Copy Features — Reduce/enlarge, ID card copy, collation, lighten/darken, 2in1 copying

Scan Performance

- Resolution — Up to 600 x 600 dpi
- Destinations — Scan to desktop, TWAIN application, scan to email
- File Formats — PDF and TIFF
- Encoding — MH, MR, MMR for monochrome scans, JPEG for colour scans
- Drivers — TWAIN and Windows Image Acquisition (WIA) drivers
- Bundled Software — Xerox Scan to PC Desktop® Personal Edition (1 seat)

Fax Features

- Fax Speed — 33.6 Kbps fax modem
- Resolution — Up to 203 x 392 dpi
- Compression — MH/MR/MMR
- Fax Memory — 4 MB
- Fax Features — 9 one-touch dial settings, 9 group dial settings, 100 speed dial settings, 125 broadcast destinations

Paper Handling

- Paper Capacity — 200 sheets, standard (700 sheets, optional)
 - Tray 1 (standard) — 200 sheets
 - Tray 2 (optional) — 500 sheets
- Output Tray — 100 sheets
- Automatic Document Feeder (ADF) — 50 sheets
- Supported Sizes —
 - Tray 1 — Custom sizes from 92 x 148 mm to 216 x 356 mm
 - Tray 2 — A4-size paper
 - ADF — 140 x 148 mm to 216 x 356 mm
- Supported Weights —
 - Tray 1 — 60 to 200 gsm
 - Tray 2 — 60 to 90 gsm
 - ADF — 60 to 90 gsm
- Supported Media Types — Plain paper, envelopes, labels, card stock and transparencies

Controller

- Memory — 128 MB
- Connectivity — 10/100Base-TX Ethernet, USB 2.0

Reliability

- Duty Cycle — 35,000 pages per month
- Warranty — One-year on-site warranty



PHASER 6115MFP/D

Includes all capabilities of the Phaser 6115MFP/N, with the following upgrades:

Print Performance:

- Automatic two-sided output

Copy Performance:

- Automatic two-sided output

PHASER 6115MFP OPTIONAL ACCESSORIES

- 500-sheet feeder (A4-size)
- Automatic two-sided output unit (Phaser 6115MFP/N only)



Phaser 6115MFP with optional 500-sheet feeder

Section 2

Evaluating Colour Multifunction Printers

Customers today have many options among the entry-level colour multifunction printers available on the market. Evaluating and choosing the right product is important for your business but can also be a daunting task, due to the number of offerings with similar specifications and feature sets. Based on years of experience developing multifunction printers, Xerox has identified some key areas for you to consider as you evaluate your entry-level colour laser multifunction printer options.

Colour laser multifunction printers in this category are most often purchased to fulfill one of the following requirements:

- Inkjet replacement — customers who have used colour inkjet printers and all-in-one systems in the past and want to upgrade to a laser-based system
- Black and white replacement — customers intending to replace an existing black and white printer or multifunction printer with a colour system that can handle their black and white print needs while providing support for colour
- Colour printer replacement — customers who have an ageing colour laser printer to upgrade and would like to simultaneously add multifunctionality to their office

If your company plans to purchase one or many colour multifunction printers to meet these requirements, Xerox recommends that you conduct your evaluation with the following criteria in mind:

Evaluate Value and Productivity

The multifunction printer you choose should deliver a powerful set of features and dynamic performance, maximising your investment and helping boost your office's productivity.

Evaluate Convenience

Regardless of your business type or office size, the technology you deploy should be intuitive and a good fit for your environment.

Evaluate Installation and Management

With or without IT resources, the multifunction printer you purchase should be easy to deploy into your organisation and simple to manage on an ongoing basis.

This section of the Evaluator Guide will examine each of these areas and suggest ways you can evaluate multifunction printers against these requirements. Do this for all the colour multifunction printers you consider, and you'll see how the Phaser 6115MFP exceeds expectations on all counts.



EVALUATE VALUE AND PRODUCTIVITY

Does the **combination of entry level price and performance** allow you to **consolidate systems** and **simplify your technology**? Will the **image quality** meet your day-to-day printing, copying, scanning and faxing needs? Does the multifunction printer include the **media support** you need to run your business? Will the multifunction printer deliver the **overall performance** — as well as the **print, copy, scan and fax features** — that you need to **increase your productivity**?

THE XEROX
ADVANTAGE

HOW THE PHASER 6115MFP EXCEEDS THE VALUE REQUIREMENT

REPLACE AND CONSOLIDATE STAND-ALONE SYSTEMS

Colour laser multifunction printers like the Phaser 6115MFP help small, space-constrained offices streamline multiple single-function systems into a single multifunction unit by delivering the features and performance you'd expect from stand-alone printers, scanners and fax machines. For example, if you currently have a 15 ppm black and white printer, you can replace that system with the Phaser 6115MFP and increase your black and white print speed to 20 ppm, with the addition of colour print, copy, scan and fax capabilities built right in.

IMAGE QUALITY

With a print resolution of up to 2400 x 600 dpi and a copy resolution of up to 600 x 600 dpi, the Phaser 6115MFP is capable of delivering the high-quality print output you need to support the professional image of your business. Image quality applies to the Phaser 6115MFP scan capabilities as well, with a resolution up to 600 x 600 dpi. Scan image quality is uncompromised as well, with settings up to 203 x 392 dpi for black and white faxing.

PAPER SUPPORT

The Phaser 6115MFP can handle a variety of media sizes, weights and types to support the range of documents you print as part of your company's daily business. The standard configuration includes a paper tray that holds up to 200 sheets of paper, with support for:

- Paper Sizes — Supported sizes include custom sizes from 92 x 148 mm to 216 x 356 mm in Tray 1 and A4-size papers in Tray 2.
- Paper Weights — Supported weights ranging from 60 to 200 gsm in Tray 1 and 60 to 90 gsm in Tray 2
- Paper Types — Supported media types include plain paper, envelopes, labels, transparencies and card stock

THE XEROX
ADVANTAGE

HOW THE PHASER 6115MFP EXCEEDS THE PRODUCTIVITY REQUIREMENT

PERFORMANCE

The Phaser 6115MFP delivers the performance necessary to support one employee or a small group of employees in small business environments. Some performance highlights include up to 20 ppm black and white and 5 ppm colour printing, 12 cpm black and white and 5 cpm colour copying, automated copying and scanning of page documents with the 50-sheet ADF, and 33.6 Kbps faxing. The Phaser 6115MFP delivers the performance you need to streamline your office technology.

EVALUATE VALUE AND PRODUCTIVITY (CONTINUED)

PRINT FEATURES

At the heart of the Phaser 6115MFP is a small business-ready laser printer that features print speeds of 20 ppm black and white and 5 ppm colour. First-page-out times run as fast as 14 seconds for black and white documents and 23 seconds for colour documents, reducing downtime spent waiting for your documents to print. A print resolution of up to 2400 x 600 dpi delivers crisp text and professional-looking prints, whether you're printing internal documents or customer-facing collaterals.

The Phaser 6115MFP is packed with advanced printing features, including:

- Booklet printing — Formats printed documents for folding into booklets
- Custom page sizes — Sets custom page sizes to support speciality media
- Two-sided output (on D configuration) — Saves paper by printing on both sides of a page
- N-up printing — Prints multiple pages of a document to single sheet of paper
- Poster printing — Enlarges image by printing onto multiple sheets of paper
- Watermarks — Add “CONFIDENTIAL,” “DRAFT,” or custom titles to a printed document

COPY FEATURES

The Phaser 6115MFP is a powerful solution for customers who are purchasing their first colour laser system with copying functionality. You can take advantage of copy speeds of up to 12 cpm black and white and 5 cpm colour and first-page-out times as fast as 14 seconds for black and white documents and 23 seconds for colour documents.

In addition, the Phaser 6115MFP delivers these advanced copying features:

- 2in1 — Copy two pages to a single sheet of paper
- Collation — Multiple copies of multipage documents are printed as complete sets
- ID card copy — Allows you to copy both sides of an ID or a check onto one side of paper
- Reduce/enlarge — Control the size of the copied output

SCAN FEATURES

The Phaser 6115MFP delivers convenient scanning to TWAIN applications and email. These options are particularly useful in offices where the system will support multiple employees. The 50-sheet ADF eases the process of scanning multipage documents by automating the scanning of each page. TWAIN and WIA drivers are delivered with each Phaser 6115MFP, ensuring you can easily integrate these scan capabilities into your applications.



EVALUATE VALUE AND PRODUCTIVITY (CONTINUED)

Phaser 6115MFP scan features include:

- Scan to email — Email a scanned image in a single easy step
- Scan to TWAIN application — Integrates Phaser 6115MFP scan capability into TWAIN-compliant applications
- Scan to PC Desktop Personal Edition (1 seat) — Bundled software application for organising, storing and performing optical character recognition on scanned files

FAX FEATURES

The Phaser 6115MFP is a highly capable fax solution for small businesses that continue to use fax as part of their daily operations. It utilises a 33.6 Kbps fax modem and 4 MB of dedicated fax memory. A resolution of up to 203 x 392 dpi means you'll be transmitting high-quality-image faxes.

Phaser 6115MFP fax features include:

- Compression methods — MH/MR/MMR
- Dedicated fax memory — 4 MB memory stores up to 320 pages
- One-touch dial — 9 settings
- Group dial — 9 settings
- Speed dial — 100 settings
- Broadcast fax — Simultaneously transmits to up to 125 locations

EVALUATE CONVENIENCE

Once you've found a multifunction printer that can support your performance requirements, you need to ensure it is **simple and easy to use**. It is also important that it is a **good fit in your environment**. In addition to advanced features, does the multifunction printer incorporate **design touches for small business environments**? Does the multifunction printer include **connectivity options** to support **individual or shared environments**?

THE XEROX
ADVANTAGE

HOW THE PHASER 6115MFP EXCEEDS THE CONVENIENCE REQUIREMENT

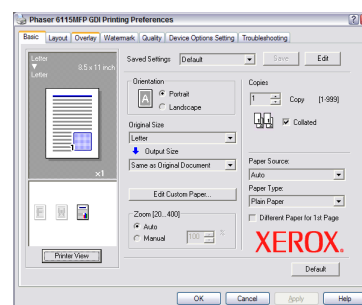
EASY TO USE

Whether you have previously used a multifunction printer in your office or are deploying one for the first time, you will find the Phaser 6115MFP intuitive and easy to learn. The front panel is clearly organised, with a centralised two-line display and five-way buttons for navigating menus and settings. Dedicated buttons for selecting between copy, scan/email and fax modes are located at the top right of the panel for quick job programming. Separate Start buttons for colour and black and white modes help you copy or scan in your intended mode, without forcing you to navigate within menus to change the settings. Dedicated buttons for copy and scan features like quality, reduce/enlarge, lighten/darken, collate and 2in1 copying further assist you in quickly programming jobs. The left side of the panel is dedicated to fax functionality, where you can access one-touch, group dial and speed dial settings.

EVALUATE CONVENIENCE (CONTINUED)

Further, the Phaser 6115MFP uses print drivers that are intuitive and make the most commonly used features quickly accessible — making it easy for employees to learn and use on a daily basis. The driver features multiple tabs that organise features for programming print jobs:

- **Basic** — Most commonly accessed settings, including page orientation, output size, copies, collation, paper source, zoom and paper type
- **Layout** — Settings for pages per sheet, rotation and double-sided output
- **Overlay** — Setting for Inserting images into documents
- **Watermarks** — Places phrases like “CONFIDENTIAL,” “DRAFT” or custom messages into the printed document
- **Quality** — Granular settings for controlling image quality and colour output
- **Device Options** — Settings for managing installed features like two-sided printing or additional paper tray
- **Troubleshooting** — Provides links to user documentation and online resources



COMPACT DESIGN

At just 528 mm wide, 583 mm deep and 531 mm high, the Phaser 6115MFP has one of the smallest footprints in its class and is a great option for space-constrained office environments. The Phaser 6115MFP is easily deployable onto a desktop for an individual user or onto a tabletop as a shared printer for multiple users.

SMALL OFFICE READY

Small office readiness isn't just about having a small form factor — other factors include noise levels generated and how supplies are accessed and replaced. The Phaser 6115MFP generates less than 53 dB(A) when printing and less than 35 dB(A) when in standby mode. The commonly replaced consumables for the Phaser 6115MFP — including toner cartridges, imaging units, waste toner containers and paper — are accessed via the front of the printer, making it easy to replace supplies without moving the printer.

CONNECTIVITY OPTIONS

Both configurations of the Phaser 6115MFP include standard USB 2.0 and 10/100 Base-TX Ethernet connectivity for network printing and scanning — making it a good fit whether you intend to use it as a direct-connect system or on a network shared among multiple users.



EVALUATE INSTALLATION AND MANAGEMENT

Multifunction printers designed for small businesses must be **easy enough for nontechnical employees to set up and install**. Further, because most small and medium-size businesses have **limited or no IT support**, printers deployed in their offices must be **simple to manage** on an ongoing basis.

THE XEROX ADVANTAGE

HOW THE PHASER 6115MFP EXCEEDS THE INSTALLATION REQUIREMENT

EASY TO SET UP AND INSTALL

Once the Phaser 6115MFP is unpacked and in place, simply plug in the power and connectivity cables and turn it on. Using the included installation CD, you can then easily install printing and scanning driver software for your Phaser 6115MFP onto the computers in your office. Alternatively, you can install driver software via the network using the CentreWare® IS Embedded Web Server built into your Phaser 6115MFP, or you can download drivers from www.xerox.com.

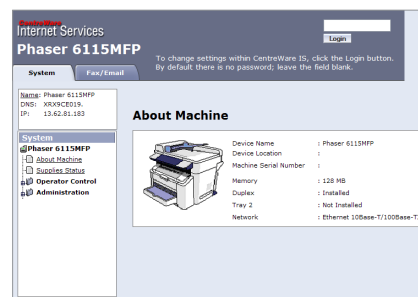
THE XEROX ADVANTAGE

HOW THE PHASER 6115MFP EXCEEDS THE EASE-OF-MANAGEMENT REQUIREMENT

EASY TO MANAGE

Xerox delivers a set of software utilities with the Phaser 6115MFP to simplify ongoing management, even in small office environments where access to IT resources is often limited. Xerox management tools include:

- Xerox CentreWare IS Embedded Web Server — CentreWare IS allows you to connect to the printer through a standard web browser to monitor printer status, manage settings and properties, and find troubleshooting and support information.
- Xerox MFP ControlCentre® — ControlCentre helps you set printer settings and manage the fax phonebook and speed dial settings in your Phaser 6115MFP.



SECTION 3

Configurations, Specifications, Supplies, Support and Additional Information Sources

PHASER 6115MFP CONFIGURATION SUMMARY



	Phaser 6115MFP/N	Phaser 6115MFP/D
Speed	Up to 5 ppm colour / 20 ppm black and white	
Duty Cycle	35,000 pages / month	
Paper Handling		
Paper input	Standard	Tray 1: 200 sheets; Custom sizes: 92 x 148 mm to 216 x 356 mm
	Optional	Tray 2: 500 sheets; Size: A4
	Document handler	Automatic Document Feeder: 50 sheets; Custom sizes: 140 x 148 mm to 216 x 356 mm
Paper output	100 sheets	
Two-sided output	Optional	Standard
Copy		
Copy speed	Up to 5 cpm colour / 12 cpm black and white	
First-page-out time	As fast as 23 seconds colour / 14 seconds black and white	
Resolution (max)	600 x 600 dpi	
Copy features	Collation, Reduce/Enlarge, 2in1 Copying, ID Card Copy	
Print		
First-page-out time	As fast as 23 seconds colour / 14 seconds black and white	
Resolution (max)	2400 x 600 dpi	
Memory (std / max)	128 MB / 128 MB	
Connectivity	10/100Base-TX Ethernet, USB 2.0	
Page Description Language	Host based	
Print features	Custom-size pages, Watermarks, Poster printing, Booklet printing, N-up	
Scan		
Scan destinations	Scan to desktop, TWAIN application, Scan to email	
Scan features	PDF, TIFF, Xerox Scan to PC Desktop® Personal Edition (1 seat), Colour scanning	
Fax		
Fax features	Embedded fax (33.6 Kbps with MMR/MR/MH compression)	
	Auto Redial, One touch dials: 9 settings, Group dials: 9 settings, Speed dials: 100 settings	
Warranty	One-year on-site warranty	

PHASER 6115MFP SPECIFICATIONS

Device Management	Xerox CentreWare IS Embedded Web Server, Xerox MFP ControlCentre
Print Drivers Support	Apple: Mac OS® X 10.2 and higher Microsoft: Windows® 2000, Windows XP, Windows 2003 Server, Windows Vista (available Q2 2007)
Media Handling	Tray 1 — Custom sizes from 92 x 148 mm to 216 x 356 mm
Supported sizes:	Tray 2 — A4-size paper
	ADF — Custom sizes from 140 x 148 mm to 216 x 356 mm
Supported weights:	Tray 1 — 60 to 200 gsm
	Tray 2 — 60 to 90 gsm
	ADF — 60 to 90 gsm
Operating Environment	Temperature: Storage: -20° to 40° Celsius, Operating: 10° to 32° Celsius Relative Humidity: Non-operating: 15% to 80%, Operating: 15% to 80% Sound Power Levels: Operating: 53 dB(A), Standby: 35 dB(A)
Electrical	Power: 110 – 127 VAC, 50/60 Hz; 220–240 VAC, 50/60 Hz Power consumption: Power Save Mode: 28 W, Standby: 250 W, Printing: 450 W ENERGY STAR® qualified
Physical Dimensions (WxDxH)	Phaser 6115MFP/N: 528 x 583 x 531 mm; Weight: 33 kg Phaser 6115MFP/D: 528 x 583 x 531 mm; Weight: 35.3 kg Optional 500-Sheet Feeder: 495 x 583 x 117 mm; Weight: 5 kg
Certification	FCC Part 15, Class B, FCC Part 68, Listed UL 60950-1/CSA 60950-1-03, CE Mark applicable to Directives 72/23/EEC, 89/336/EEC and 1999/5/EC

PHASER 6115MFP SUPPLIES AND OPTIONS

Supplies	Part Number	Description	Capacity
	113R00689	Cyan Standard-Capacity Toner Cartridge	Average 1,500 standard pages ¹
	113R00691	Magenta Standard-Capacity Toner Cartridge	Average 1,500 standard pages ¹
	113R00690	Yellow Standard-Capacity Toner Cartridge	Average 1,500 standard pages ¹
	113R00692	Black High-Capacity Toner Cartridge	Average 4,500 standard pages ¹
	113R00693	Cyan High-Capacity Toner Cartridge	Average 4,500 standard pages ¹
	113R00695	Magenta High-Capacity Toner Cartridge	Average 4,500 standard pages ¹
	113R00694	Yellow High-Capacity Toner Cartridge	Average 4,500 standard pages ¹
	108R00691	Imaging Unit	Approximately 10,000 pages colour ² Approximately 20,000 pages black and white ²

¹ Average standard pages. Declared Yield based on 5% area coverage on A4-size page. Yield will vary based on image, area coverage and print mode.

² Approximate pages. Declared Yield based on an average job size of 3 pages A4-size. Yield will vary based on job run length, media size and orientation.

Options	Part Number	Description
	097S03675	500-Sheet Feeder, A4-size
	097S03775	Two-Sided Automatic Printing Unit

SUPPORT AND ADDITIONAL INFORMATION SOURCES

UNRIVALLED SERVICE AND SUPPORT

Behind every Xerox product is a customer support network that is unrivalled in the industry — and available when you need it. Xerox service professionals use leading-edge technologies to keep you up and running. They're even linked to the engineers who designed your product, so you can be confident when you choose Xerox.

ADDITIONAL INFORMATION SOURCES

Phaser 6115MFP Front Panel:

The front panel offers system settings, system status and troubleshooting information.

Customer Documentation contains:

- Installation Guide
- Features Setup Guide
- Scan to PC Desktop CD-ROM
- Quick Use Guide
- Software and Documentation CD-ROM
- Registration Card
- Warranty Booklet

On the web:

Visit www.xerox.com/office for:

- Product, supplies and support information
- Downloading printer drivers
- Finding your local Xerox sales representative
- Online documentation

Visit www.xerox.com/office/support for:

Support and service information, including the same troubleshooting Knowledge Base used by Xerox Customer Support staff, that provides the latest technical information on:

- Application issues
- Errors
- Print quality issues
- Troubleshooting

NOTES



Questions? Comments? Problems?

If you have any questions, please contact
your Xerox sales representative or local
reseller or visit us on the web at

www.xerox.com/office

