

XEROX[®]

CopyCentre[®]
C123/C128

WorkCentre[®]
M123/M128

WorkCentre[®] Pro
123/128

Technology | Document Management | Consulting Services

copy | print | scan | fax | email

Simply
**leading
edge**



Simplicity through multiplicity

Necessity breeds invention...such as the new family of office machines from Xerox. Whether you need copying, printing, faxing, or all of the above — plus more — Xerox combines multiple features into one streamlined system. The more functions at your fingertips, the faster and easier your workflow. Multiply productivity while simplifying tasks with these powerful players.

CopyCentre® C123/C128

copier



The basics, and then some.

The CopyCentre C123/C128 copier goes beyond the basics with a host of special features to make everyday copying jobs a breeze.

- Fast copying at up to 23/28 ppm, with your first copy out as fast as 4.5 seconds
- Flexible paper handling with automatic duplexing
- A multitude of special features make copying quicker and more convenient, including Build Job*, Transparencies + N-Sets, Multiple-Up, Booklet Creation*, Repeat Image, Posters, Covers* and Book Copy
- Optional walk-up fax extends your capabilities

* Available with Hard Disk Drive Option

WorkCentre® M123/M128

multifunction



Add powerful network printing at an affordable price.

The WorkCentre M123/M128 multifunction is the next step up, providing the same flexible copying capabilities as CopyCentre, but with powerful printing added.

- Network printing meets busy workgroup needs for speed and efficiency
- Print features including Watermark, Covers and Posters make complex print jobs simpler, as do optional advanced features like Sample Set, Delay Print*, Secure Print* and more
- Network management tools enable simple installation and add powerful administrative features

* Available with Hard Disk Drive Option

WorkCentre® Pro 123/128

advanced multifunction



Multiple functions in one easy system.

With this robust machine, you get all the features of WorkCentre, plus advanced multifunctionality.

- Standard additional print features, including Secure Print and Delay Print, increase your options while protecting mission critical information
- Scan to multiple destinations, including email, network file server, mailbox, desktop, templates and i-fax
- Walk-up fax comes standard

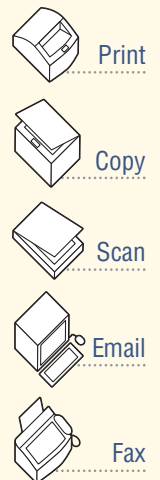
A simple-to-use **workhorse** for unparalleled **performance**

Simplify your workday with a new family of office machines from Xerox, available at three feature-rich levels. Their major strengths include true 1200 dpi print resolution, best-in-class media handling, and simply outstanding copying, scanning and document workflow functionality. Whether you need basic copying or a full suite of multifunction capabilities, Xerox offers a highly evolved device to get your work done quickly and efficiently.

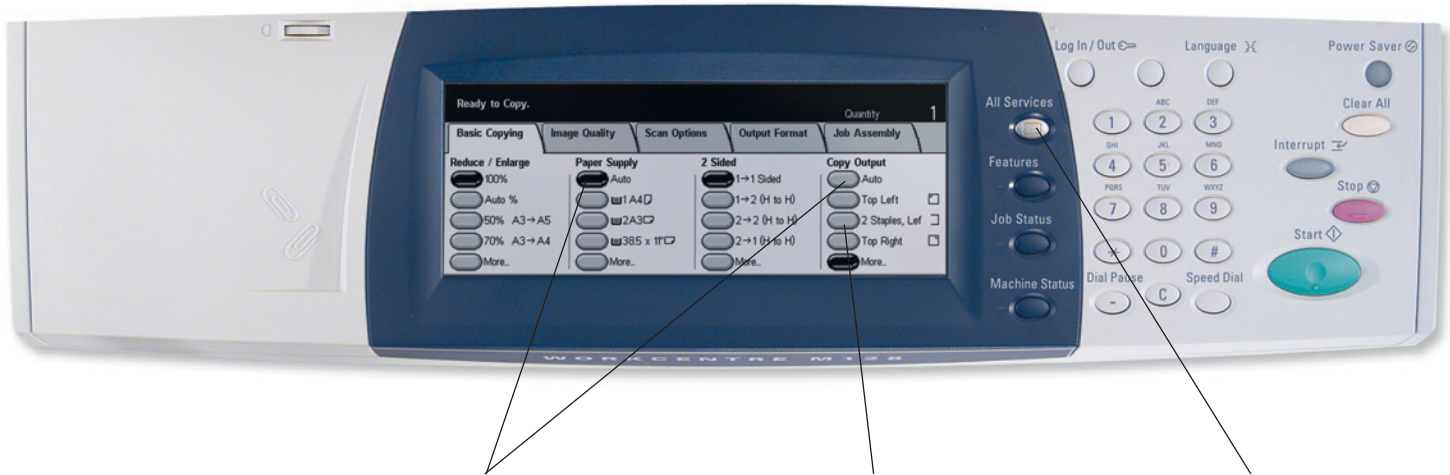


More **choices** to meet your **needs**

Choose the level of functionality that you need to be productive. From walkup copying with optional fax, to copying and network printing, all the way to print, copy, scan, fax and email with unparalleled speed and power.



Many features are accessible with the touch of a single button, thanks to a simple, intuitive user interface.



Time-saving “Auto” features make correct selections for you to ensure high-quality output

Advanced document production functionality is right at your fingertips

Convenient access is provided to advanced functions such as network scanning, fax and e-mail.

Uniquely simple

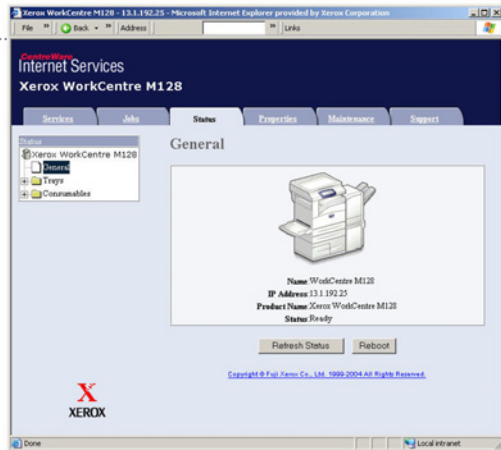
With Xerox, advanced features are easy to use. An intuitive interface and intelligently crafted paper handling make these machines a joy to have in the office.

- Smart paper trays sense paper size and automatically match the requirements of the print application.
- A short paper path makes paper handling extremely reliable – even for heavy or specialty papers.
- Industry-leading user interface reduces steps to complete everyday jobs.
- Keep work flowing with program-ahead capabilities to perform multiple tasks simultaneously.

Leading-edge features

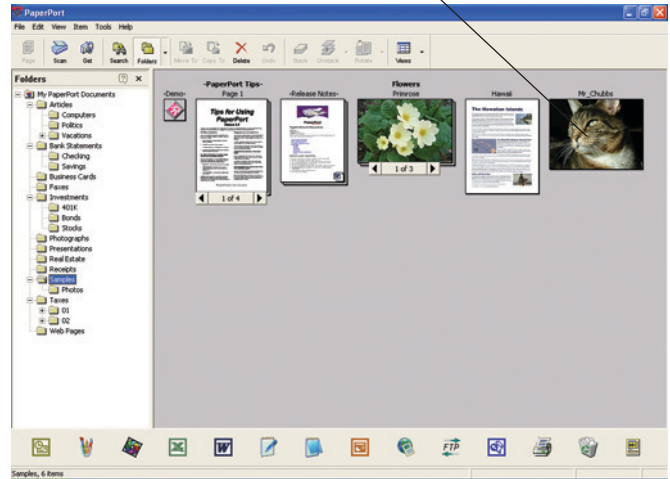
Packed with a full range of advanced features you won't find on other office machines in this class, these Xerox products automate daily tasks.

- With the printing option, you get 1200 x 1200 dpi resolution, an optional 20 GB print hard drive and Postscript 3 for maximum performance in a busy, shared environment.
- Save and store jobs on the device and print/copy them when you need them.
- Xerox SuppliesAssistant™ manages your supplies usage and ordering to ensure you have the right supplies on hand at any time.
- FreeFlow™ SMARTsend™ software lets you move paper documents into a digital workflow and quickly access, store or distribute them to anyone, anywhere, in virtually any format.
- Special transparency feature delivers transparencies and handouts in the same job.



An Embedded Web Server (EWS) allows you to monitor print jobs and run status using a PC browser. Users can set print and fax functions from the PC. Network administrators can better understand and support the office's printing needs.

Scan to PC Desktop® lets you move documents into word processing, spreadsheets and database applications for editing, distribution and storage...saving time, effort and money.



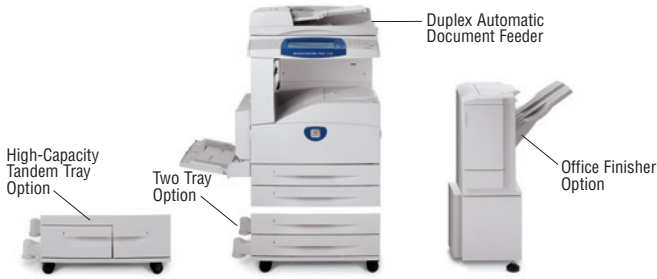
Technologically savvy

These devices are full of robust, high-performance features that are scalable to any workgroup. They streamline and integrate processes to simplify device management and increase productivity.

- Best-in-class scanning solutions convert hardcopy into digital documents and distribute them anywhere: email, PC desktop, document management system, internet fax.
- Scan to PC Desktop software lets you move documents into word processing, spreadsheets and database applications for editing, distribution and storage...saving time, money and effort.
- Secure print, secure fax and encrypted data transmission protect your mission critical information.
- CentreWare® Web software proactively manages an entire enterprise-wide print environment regardless of manufacturer. It allows you to keep close tabs on your system to ensure everything is working smoothly.
- Easily set up, monitor and manage remote devices from your desktop using CentreWare® Internet Services software.



Call today. For U.S. and Canadian product information, call **1-877-362-6567**. To speak to a U.S. Sales Representative, call **1-800-ASK-XEROX**. Or visit us at www.xerox.com/office



CONFIGURATIONS	CopyCentre® C123	CopyCentre® C128	WorkCentre® M123	WorkCentre® M128	WorkCentre® Pro 123	WorkCentre® Pro 128
Speed	Up to 23 ppm	Up to 28 ppm	Up to 23 ppm	Up to 28 ppm	Up to 23 ppm	Up to 28 ppm
Duty cycle (pages/mo)	Up to 75,000	Up to 100,000	Up to 75,000	Up to 100,000	Up to 75,000	Up to 100,000
Paper handling						
Paper trays	Two 500-sheet Trays, 100-sheet Bypass Tray (Total 1,100 sheets)					
Optional	Two Tray Option 500 + 500 sheets (Total 2,100 sheets) High-Capacity Tandem Tray Option 800 + 1200 sheets (Total 3,100 sheets)					
Paper output	500 sheets, Automatic two-sided (optional)					
Finisher (optional)	Finisher/Stapler (1,000-sheet, 50 sheets stapled, 3-position stapling)					
Copy						
First page out time	As fast as 4.5 seconds					
Resolution	600 x 600 dpi					
Print						
First page out time	NA				< 12 seconds	
Resolution	NA				1200 x 1200 dpi	
Processor	NA				Power PC 300 MHz	
Connectivity	NA		USB 2.0, Parallel, 10/100 BaseT Ethernet, IEEE 1284, optional 802.11b/g (via 3rd party)			
Fax						
Speed		Optional				33.6 Kbps with V34 + JBIG compression
Compression		Optional				JBIG, MMR/MR/MH
Resolution		Optional				Presets up to 600 dpi
Scan						
Resolution		NA				Up to 600 dpi
Scan to e-mail		NA				Yes (LDAP enabled)
Scan destinations		NA				Scan to: E-mail, Server (FTP or SMB), Mailbox, Desktop, Templates and I-Fax
I-Fax		NA				Standard

Copying

Speed: 23/28 copies per min. (letter/A4)
Resolution: 600 x 600 dpi
First Copy Out: < 4.5 seconds
Full Duplex Option: Yes (1-2, 2-2, 2-1)

Reduce/Enlarge

25 – 400% in 1% increments
Productivity: Scan Once Print Many,
Electronic Pre-Collation, Program Ahead
Multiple Copies: Up to 999 copies of
multiple page originals

Audiron: up to 500 accounts
Option: Foreign Device Interface
(CopyCentre only)

Device Memory

C123/C128: 128 MB
Option: 20 GB Hard Disk Drive

Printing (WorkCentre or WorkCentre Pro)

Technology: Laser black-and-white
Speed: 23/28 ppm Letter/A4
Resolution: 1200 x 1200 dpi
First Print Out: < 12 seconds
Duplex Option: Yes
Page Description Language (PDL): PCL6;
WorkCentre Pro 123/128: Adobe® PostScript® 3™
(option on WorkCentre M123/M128)
Print Drivers: Windows 98/NT4.0/2000/Me/XP,
Interfaces: USB 2.0 standard; Parallel Port,
IEEE 1284, 10/100BaseT Ethernet, Wireless LAN
(IEEE 802.11) via third party wireless equipment

Total Device Memory

M123/M128: 256 MB
Option: 20 GB Hard Disk Drive
WorkCentre Pro 123/128: 256 MB w/
20 GB hard drive

Scan (WorkCentre Pro)

Scan Resolution:
Optical Resolution: 600 x 600 dpi
Depth: 1 bit
Text and Halftone: 8 bit
Bundled OCR Software: PaperPort SE 9.0,
OmniPage SE v2.0

Faxing

Transmission Speed: 33.3 Kbps w/JBIG
Modem Speed: 33.6 Kbps
Data Compression: JBIG, MMR/MR/MH
Resolution: pre-sets up to 600 dpi

Dialing

Speed Dials Up to 500 locations
Group Dials Up to 50 supported

Fax Features

Halftones: 256 levels
Secure Fax: send and receive
PC Fax (LAN)

Email (WorkCentre Pro)

Scan to SMTP addresses
Local user access and authentication
Device network access and authentication
Guest mode access is available
Network address list search via LDAP

Media Handling

Input Paper Capacity

Standard: Two Trays (500 + 500 sheets);
Optional: Two Trays (500 + 500 sheets) or
High-Capacity Tandem Tray (800 + 1200 sheets)
Bypass Tray: 100 sheets
Auto Tray Switching Capable

Paper Size

Minimum: 5 x 7 in. / 148 x 210 mm
Maximum: 11 x 17 in. / 297 x 420 mm

Paper Weight

Tray 1: 16 lb. bond – 60 lb. index /
60 gsm – 105 gsm
Tray 2, 3, 4: 16 lb. bond – 110 lb. index /
60 gsm – 216 gsm
Bypass Tray: 16 lb. bond – 110 lb. index /
60 gsm – 216 gsm
Document Handler: 50 sheets
Output Tray Capacity: 500 sheets
Media Types: Paper, envelopes, labels, transparencies
Finisher: 1,000-sheet, 50 sheets stapled, 3-position
stapling

Physical Dimensions (WxDxH)

Without Finisher: 25.2 x 25.5 x 43.8 in. /
670 x 649 x 1112 mm (with bypass tray closed)
With Finisher: 60.5 x 26.3 x 43.8 in. /
1537 x 668 x 1112 mm (with bypass tray open)



Device Management

CentreWare Internet Services (Networked Products)
CentreWare Web, CentreWare DP, NDPS and
HP Openview

Operating Environment

Temperature
Maximum Range: 50° – 95°F/10° – 35°C
Recommended Range: 60.8° – 86°F/16° – 30°C

Humidity

Maximum Range: 15 – 85%
Recommended Range: 30 – 70%

Electrical

Power: 110 VAC, 50/60 Hz or 220 VAC, 50/60 Hz
Power Consumption:
Average: 623 watts
Power Saver Mode: 4.7 watts
Energy Saver: ENERGY STAR® Compliant

Supplies

Approximate Yields

Toner – Starter kit: 11,000 images*;
Replacement kit: 30,000 images*
Drum Cartridge – 60,000 images*
*Capacities are approximate, based on 5% coverage
on a letter/A4-sized page and dependent on customer
job mode run length

Agency Approvals

Safety: UL Safety

© 2005 Xerox Corporation. All rights reserved. Xerox®, CopyCentre® and WorkCentre® are trademarks of Xerox Corporation. In support of Xerox's environmental leadership goals, these models may contain some recycled components that are reconditioned. OmniPage® and PaperPort® are registered trademarks of ScanSoft, Inc. Adobe® and PostScript® 3™ are registered trademarks or trademarks of Adobe Systems Incorporated. ENERGY STAR® is a registered mark. As an ENERGY STAR® Partner, Xerox Corporation has determined that these products meet the ENERGY STAR® guidelines for energy efficiency. Product information and/or specifications are subject to change without notice. 10/04, 12/04, 04/05, 08/05 610P722070C W28BR-01UD