



# Makita

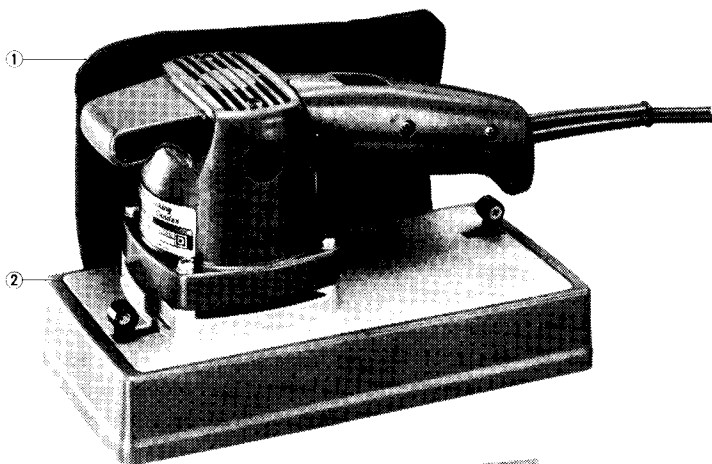
## Finishing Sander

MODEL 9045N

アメリカ

### INSTRUCTION MANUAL

#### Finishing Sander & Standard Equipment



- ① Dust bag
- ② Tool body
- ③ Abrasive paper



#### Specifications

Pad size	Continuous rating (Input)	No load speed	Overall length	Net weight	Power supply cord
114 mm x 234 mm (4-1/2" x 9-1/4")	410 W	10,000 O/min.	268 mm (10-5/8")	2.8 kg (6.2 lbs)	2.5 m (8.2 ft.)

\* Manufacturer reserves the right to change specifications of parts and accessories without notice.

\* Note: Specifications of parts and accessories may vary from country to country.

## IMPORTANT SAFETY INSTRUCTIONS

**WARNING:** When using electric tools, basic safety precautions should always be followed to reduce the risk of fire, electric shock, and personal injury, including the following:

### READ ALL INSTRUCTIONS.

1. **KEEP WORK AREA CLEAN.** Cluttered areas and benches invite injuries.
2. **CONSIDER WORK AREA ENVIRONMENT.** Don't use power tools in damp or wet locations. Keep work area well lit. Don't expose power tools to rain. Don't use tool in presence of flammable liquids or gases.
3. **KEEP CHILDREN AWAY.** All visitors should be kept away from work area. Don't let visitors contact tool or extension cord.
4. **STORE IDLE TOOLS.** When not in use, tools should be stored in dry, and high or locked-up place – out of reach of children.
5. **DON'T FORCE TOOL.** It will do the job better and safer at the rate for which it was intended.
6. **USE RIGHT TOOL.** Don't force small tool or attachment to do the job of a heavy-duty tool. Don't use tool for purpose not intended.
7. **DRESS PROPERLY.** Don't wear loose clothing or jewelry. They can be caught in moving parts. Rubber gloves and non-skid footwear are recommended when working outdoors. Wear protective hair covering to contain long hair.
8. **USE SAFETY GLASSES.** Also use face or dust mask if cutting operation is dusty.
9. **DON'T ABUSE CORD.** Never carry tool by cord or yank it to disconnect from receptacle. Keep cord from heat, oil, and sharp edges.
10. **SECURE WORK.** Use clamps or a vise to hold work. It's safer than using your hand and it frees both hands to operate tool.
11. **DON'T OVERREACH.** Keep proper footing and balance at all times.
12. **MAINTAIN TOOLS WITH CARE.** Keep tools sharp and clean for better and safer performance. Follow instructions for lubricating and charging accessories. Inspect tool cords periodically and if damaged, have repaired by authorized service facility. Keep handles dry, clean, and free from oil and grease.
13. **DISCONNECT TOOLS.** When not in use, before servicing, and when changing accessories, such as blades, bits, cutters.
14. **REMOVE ADJUSTING KEYS AND WRENCHES.** Form habit of checking to see that keys and adjusting wrenches are removed from tool before turning it on.
15. **AVOID UNINTENTIONAL STARTING.** Don't carry plugged-in tool with finger on switch. Be sure switch is OFF when plugging in.
16. **OUTDOOR USE EXTENSION CORDS.** When tool is used outdoors, use only extension cords intended for use outdoors and so marked.
17. **STAY ALERT.** Watch what you are doing, use common sense. Don't operate tool when you are tired.

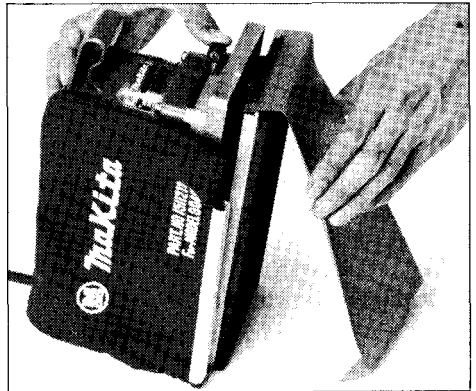
18. **CHECK DAMAGED PARTS.** Before further use of the tool, a guard or other part that is damaged should be carefully checked to determine that it will operate properly and perform its intended function. Check for alignment of moving parts, binding of moving parts, breakage of parts, mounting, and other conditions that may affect its operation. A guard or other part that is damaged should be properly repaired or replaced by an authorized service center unless otherwise indicated elsewhere in this instruction manual. Have defective switches replaced by authorized service center. Don't use tool if switch does not turn it on and off.
  19. **GUARD AGAINST ELECTRIC SHOCK.** Prevent body contact with grounded surfaces. For example; pipes, radiators, ranges, refrigerator enclosures.
  20. **REPLACEMENT PARTS.** When servicing, use only identical replacement parts.
- SAVE THESE INSTRUCTIONS.**

**VOLTAGE WARNING:** Before connecting the tool to a power source (receptacle, outlet, etc.) be sure the voltage supplied is the same as that specified on the nameplate of the tool. A power source with voltage greater than that specified for the tool can result in **SERIOUS INJURY** to the user — as well as damage to the tool. If in doubt, **DO NOT PLUG IN THE TOOL.** Using a power source with voltage less than the nameplate rating is harmful to the motor.

## How to use

### • Attaching sandpaper

To replace the sandpaper, pull back on the lever clip to release the paper clamp below. (Dustproof frame cover must first be removed. Insert the paper between the base and the paper clamp, bending a portion of about 20 mm (3/4") on both ends to make entry easier. Then make sure that the paper is snugly fit to the pad with the right tension. Failure to have it on tight will cause the paper to rip or mark the sanding surface.



### • Switch

There is a slide switch on the upper side of the tool handle. Press it forward to put the tool on; slip it backward to put the tool off.

### • Sanding

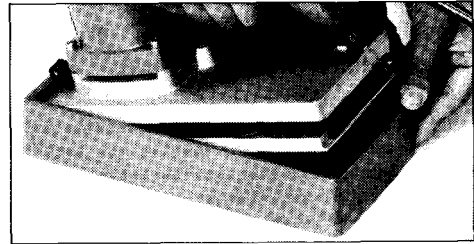
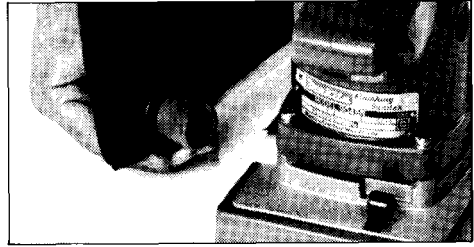
Lightly press the tool in such a manner that the entire pad surface contact uniformly the surface to be sanded. Excessive pressure on the tool or one-sided pressure may produce uneven surface, cause damage to the abrasive paper and shorten tool life.

Do not allow the pad (without abrasive paper) to contact works surface or it will be damaged, lessening its life.

- **Dust bag attachment**

To install the dust bag, fit the bag's entry port onto the dust chute on the right side of the sander, then see that the small hole on the port fits over the pin protruding from the chute by turning left or right.

When removing the dust bag, turn the bag to the left to slip the hole off the pin, then simply pull off the dust bag.

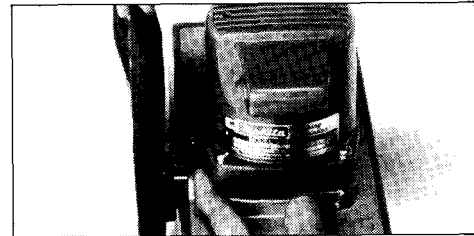


- **Removing the frame cover**

Remove from either the front or back as shown, when taking off the frame cover.

- **Regular emptying of dust bag**

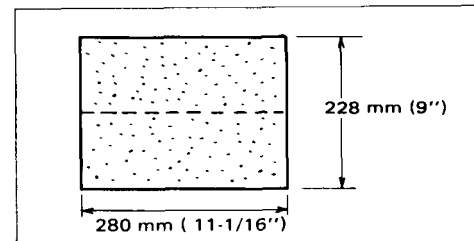
Regular emptying of the dust bag insures the maximum suction force. A full bag makes for ineffective dust collection.



- **Operation with coolant**

This tool can be used to sand with waterproof paper and a coolant, but coolant should never be allowed to enter the motor area. To use coolant, first remove the dust bag and clean off any dust adhering to the tool. Do a dry run for 2 or 3 minutes with the tool held off the surface in order to remove dust adhering to the dust chute area. Then use only enough coolant to give good operation as excessive coolant can easily be splashed into the motor and markedly shorten motor life. Coolant may also bridge parts which could result in a shock hazard.

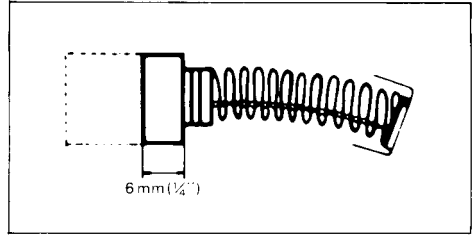
- Commercial abrasive paper of the size 228 mm (9") x 280 mm (11-1/16") may be used by cutting it in half.



## Maintenance

### • Carbon brushes

Replace carbon brushes when they wear down to about 6 mm (1/4") or sparking will occur. Both brushes should be changed at the same time.

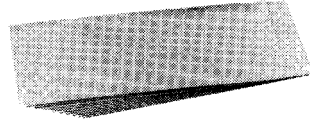


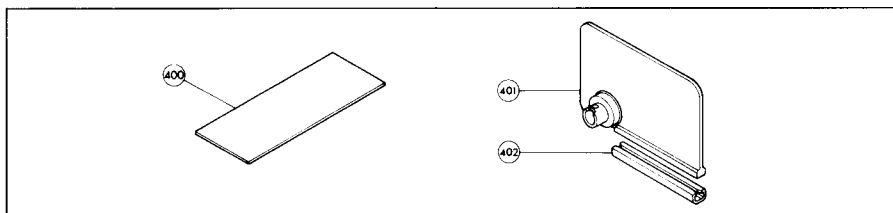
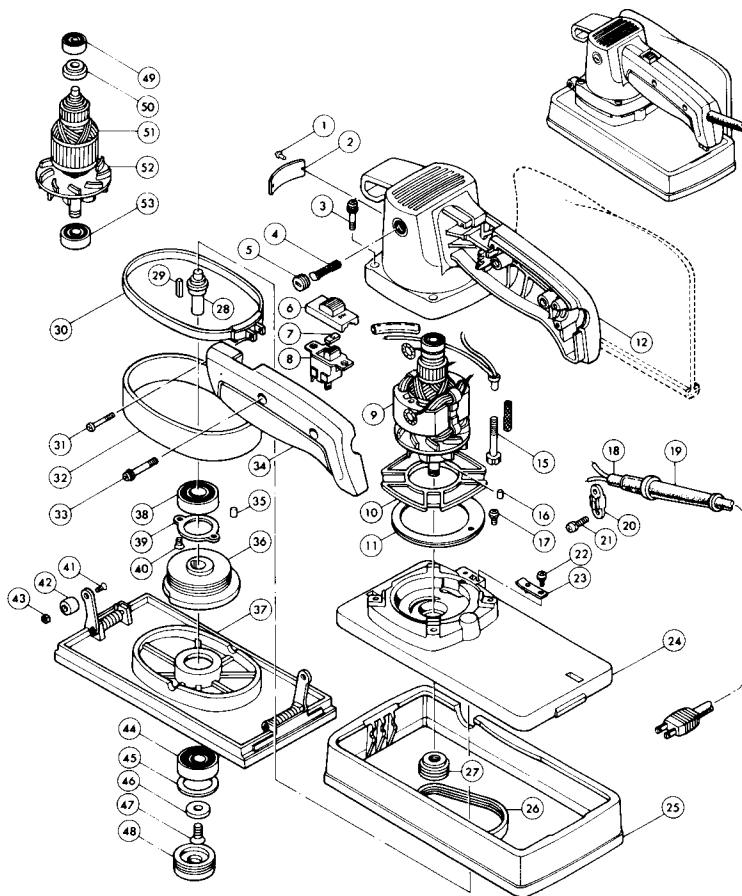
## Optional accessories

CAUTION: The use of any other accessories not specified in this manual might be hazardous.

### • Abrasive papers

Grit	Part No.	Use	Sheets per pack
# 60	742501-9	Coarse	10
# 100	742502-7	Medium	
# 120	742503-5		
# 150	742504-3	Fine	
# 180	742505-1		





ITEM NO.	NO. USED	DESCRIPTION	ITEM NO.	NO. USED	DESCRIPTION
<u>MACHINE</u>			<u>MACHINE</u>		
1	2	Rivet 0-5	31	2	P. H. Screw M14x25
2	1	Name Plate	32	1	Rubber Sleeve
3	4	P. H. Screw M5x35	33	2	P. H. Screw M4x30 (With Washer)
4	2	Carbon Brush	34	1	Handle Cover
5	2	Brush Holder Cap	35	1	Rubber Pin 6
6	1	Slider Cover	36	1	Balance Weight
7	1	Rubber Washer	37	1	Base (With Sponge Rubber)
8	1	Switch	38	1	Ball Bearing 6002LLB
9	1	FIELD ASSEMBLY (With Garter Spring x 2)	39	1	Bearing Retainer 40
10	1	Baffle Plate	40	2	C. H. Screw M4x12
11	1	Separate	41	2	C. H. Screw M4x10
12	1	Motor Housing (With Brush Holder x 2 & S. Screw M5x8 x 2)	42	2	Push Button
15	2	H. Bolt M5x40 (With Washer)	43	2	H. Nut M4
16	2	Rubber Pin 4	44	1	Ball Bearing 6003DDU
17	1	P. H. Screw M4x12 (With Washer)	45	1	F. Washer 26
18	1	CORD ASSEMBLY (Assembled Cord, Plug & Cord Guard)	46	1	F. Washer 7
19	1	Cord Guard	47	1	C. H. Screw M5x12
20	1	Strain Relief	48	1	Bearing Retainer (With Sponge Rubber)
21	2	P. H. Screw M4x18 (With Washer)	49	1	Ball Bearing 608LB
22	1	P. H. Screw M4x10 (With Washer)	50	1	Insulation Washer
23	1	Stopper	51	1	ARMATURE ASSEMBLY (Assembled Items 49 - 53)
24	1	Frame (With Needle Bearing 810)	52	1	Fan 70
25	1	Frame Cover	53	1	Ball Bearing 6200LLB
26	1	Poly V-Belt 3-250	<u>ACCESSORIES</u>		
27	1	V-Pulley 3-26	400	1	Abrasive Paper 114 - 150
28	1	Spindle	401	1	Dust Bag
29	1	Key 4	402	1	Fastener
30	2	Steel Band			

## MAKITA LIMITED ONE YEAR WARRANTY

### Warranty Policy

Every Makita tool is thoroughly inspected and tested before leaving the factory. It is warranted to be free of defects from workmanship and materials for the period of ONE YEAR from the date of original purchase. Should any trouble develop during this one-year period, return the COMPLETE tool, freight prepaid, to one of Makita's Factory or Authorized Service Centers. If inspection shows the trouble is caused by defective workmanship or material, Makita will repair (or at our option, replace) without charge.

This Warranty does not apply where:

- repairs have been made or attempted by others;
- repairs are required because of normal wear and tear;
- The tool has been abused, misused or improperly maintained;
- alterations have been made to the tool.

IN NO EVENT SHALL MAKITA BE LIABLE FOR ANY INDIRECT, INCIDENTAL OR CONSEQUENTIAL DAMAGES FROM THE SALE OR USE OF THE PRODUCT. THIS DISCLAIMER APPLIES BOTH DURING AND AFTER THE TERM OF THIS WARRANTY.

MAKITA DISCLAIMS LIABILITY FOR ANY IMPLIED WARRANTIES, INCLUDING IMPLIED WARRANTIES OF "MERCHANTABILITY" AND "FITNESS FOR A SPECIFIC PURPOSE," AFTER THE ONE-YEAR TERM OF THIS WARRANTY.

This Warranty gives you specific legal rights, and you may also have other rights which vary from state to state. Some states do not allow the exclusion or limitation of incidental or consequential damages, so the above limitation or exclusion may not apply to you. Some states do not allow limitation on how long an implied warranty lasts, so the above limitation may not apply to you.



***Makita Electric Works, Ltd.***

11-8, 3-chome, Sumiyoshi-cho, Anjo, Aichi 446, Japan