



copy | print | scan | fax | email

# Evaluator Guide

CopyCentre® C2128 / C2636 / C3545

WorkCentre® Pro C2128 / C2636 / C3545





## ABOUT THIS GUIDE

*This guide will introduce you to the CopyCentre® C2128/C2636/C3545 digital copiers and WorkCentre® Pro C2128/C2636/C3545 multifunction systems, and aid you in your evaluation process.*

## CONTENTS

### Section 1 – Product Overview

CopyCentre. . . . .	2
WorkCentre Pro . . . . .	2

### Section 2 – Evaluating Multifunction devices

*Suggests specific features to look for in a product of this class, how to evaluate those features, and how the Xerox products measure up.*

Speed and Productivity . . . . .	3
Ease of Use . . . . .	4
Reliability . . . . .	6
Versatility . . . . .	7
Finishing. . . . .	9
Security . . . . .	10
Cost Control . . . . .	11

### Section 3 – Configurations, Specifications, Options and Supplies

Competitive Comparisons . . . . .	12
Configuration Summary . . . . .	14
Service & Support . . . . .	15
Additional Information Sources . . . . .	16

## SECTION 1

# Product Overview

There are two product sub-brands available in three speed bands:



### **COPYCENTRE C2128/C2636/C3545**

CopyCentre C2128, C2636, and C3545 are fast, productive, easy to use, low cost, digital color copiers with the essential features needed to produce a wide variety of professionally finished documents. Reliability is built-in and small size means they can be placed in space challenged environments. They have multiple fax options and advanced finishing capabilities. And they can be upgraded to a fully connected WorkCentre Pro multifunctional device as needs change.



### **WORKCENTRE PRO C2128/C2636/C3545**

The WorkCentre Pro C2128, C2636, and C3545 multifunction systems have extensive capabilities designed for almost any office need from printing and copying in color or black-and-white, to fax-to-email, or scan-to-internet fax. These models offer full digital copier functionality, powerful network printing capabilities, a wide array of network device management tools and robust security features that can be customized for specific needs. Extensive hardcopy to electronic document distribution capabilities enable paper and digital documents to converge in an efficient, seamless flow of information. In addition, a wide range of integrated solutions provided by Xerox Business Partners extends the value of WorkCentre Pro products even further.

#### **Common features include:**

- Scan speed of 32 ppm for improved copy/scan productivity
- First Copy Out Time 6.1 seconds black, 8.5 seconds color
- Color touch screen interface
- Electronic pre-collation
- Up to 3140-sheet paper capacity
- Feed from all trays, media up to 80 lb. Cover (220 gsm) and autoduplex heavy weight media up to 60 lb. Cover (169 gsm)
- Offset catch tray
- True 1200 x 1200 dpi printing (PostScript) – (WorkCentre Pro only)
- Simultaneous feature use (scan while printing or copying)
- Print and copy auditron to monitor usage for accounting and control

#### **Common options:**

- Finishing options including 50-sheet multi-position stapling, hole punch and saddle-stitch booklet making
- Convenience Stapler
- Optional network accessories include scan to desktop, e-mail, embedded fax, internet fax, network fax server, and job based accounting
- Embedded telephone fax
- Three input options range from 1140-sheets up to 3140-sheets
- The security of Image Overwrite
- Foreign device interface for coin ops, card readers, and accounting solutions

## SECTION 2

# Evaluating Multifunction devices

### EVALUATION CRITERIA

As the company that invented laser printing, Ethernet networking, and the first digital Multi-Function Product (MFP), Xerox has invested years of research and development in designing the most productive office devices in the industry. This experience has positioned Xerox as the recognized leader in office MFP design and performance. Based on our in-depth understanding of customer needs in the office, Xerox recommends the following criteria be considered in the evaluation process of a shared MFP:

- **Productivity** – can it keep up with the demands of a multiple user environment?
- **Ease of Use** – are all the capabilities integrated and intuitive?
- **Reliability** – is it designed and build for demanding use and backed by a quality organization?
- **Versatility** – can the MFP grow with changing demands?
- **Finishing** – can the MFP provide the distribution ready documents that you require?

MFPs often look the same from the outside. And from a quick look at specifications on speeds, feeds, and print resolution, you might incorrectly conclude that most MFPs are basically equal. This section of the Evaluator Guide will suggest ways you can thoroughly evaluate them, and show how the Xerox CopyCentre C2128/C2636/C3545 and WorkCentre Pro C2128/C2636/C3545 models can best meet your needs.

#### EVALUATE

#### PRODUCTIVITY

In addition to actual print engine speed consider the things that effect overall throughput. Are the scanning and faxing features **powerful enough** for your busy workgroup? What is the **warm-up wait time**? Is the device sized for the **entire workgroup**? Can features be used at the **same time** or are users forced to wait for the device to be “free”? Can you **monitor the device functions** from your desktop and at the device?

#### ADVANTAGE XEROX

#### HOW XEROX COPYCENTRE C2128/C2636/C3545 AND WORKCENTRE PRO C2128/C2636/C3545 EXCEED THE PRODUCTIVITY REQUIREMENT

With up to 35 ppm color and 45 ppm black and white output speed, a 32 ppm scan speed, concurrent scanning and printing, and a warm-up time of 60 seconds or less, documents can be produced quickly with less time spent at the device. Automatic features like auto image quality, auto registration, auto rotation, auto paper select, auto tray switching and auto job recovery ensure crisp and clear images and the fastest, best-in class quality output every time.

A powerful 733MHz processor accelerates document traffic and maximizes network resources. Files are sent over the network just once no matter how many sets are being printed. Files are processed at the device, off the network, freeing up user’s workstations and minimizing network traffic. Plus, with concurrent scan and print capability, someone can be scanning in one document, while a second document is printing and a third is being received over the network. This results in network printing performance that is unmatched in the industry.

There are no unknowns. Up-to-date information on every job; print, copy, scan, email, or fax, plus in-depth device information at your fingertips. Either at the device or from your desktop you can manage documents and jobs through an integrated job queue, display job progress and status, and manage jobs all with a few mouse clicks or button pushes.

## EVALUATE

## EVALUATE EASE OF USE

Look for **fully integrated functions** that work together to create more value than the sum of their parts. Are the functions **easy to learn**? Is the user interface **consistent** from function to function? Do the network features give you **full access** to the power of your network? Does the device include **additional software** to take full advantage of your digital documents?

## ADVANTAGE XEROX

## HOW XEROX COPYCENTRE C2128/C2636/C3545 AND WORKCENTRE PRO C2128/C2636/C3545 EXCEED THE EASE OF USE REQUIREMENT

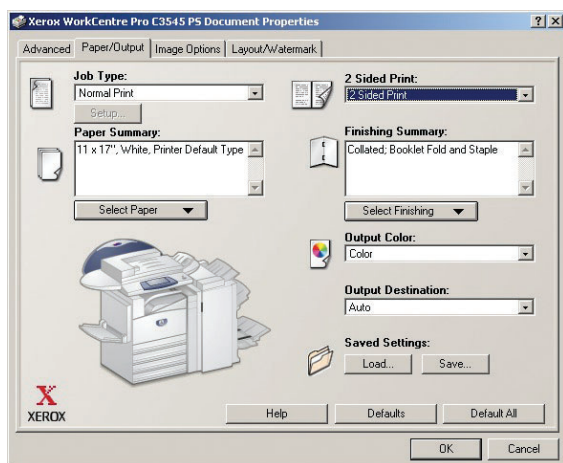
It doesn't matter if the job is simple or complex – a large, intuitive graphical interface and integrated control panel guide users through every task, making even the most complex copy jobs easier than ever.



Walk-up users have an intuitive and simple to use touch screen interface. The most commonly used features are accessed directly from the main screen. And the "Help Button" on the control panel is always available to assist the walk-up user.

With advanced features like Covers, Transparency Interleave and N-Up, you have a variety of output options. And, with Build Job you can easily integrate documents from the document handler and the platen or from different paper trays – even mix simplex and duplex output into a single job. Use "sample last segment" to review or change the output of your job section by section. There's no need to rescan the entire job if you make an error. Use "sample set" to run a proof set of the entire job to be sure the output exactly matches your requirements before it's printed.

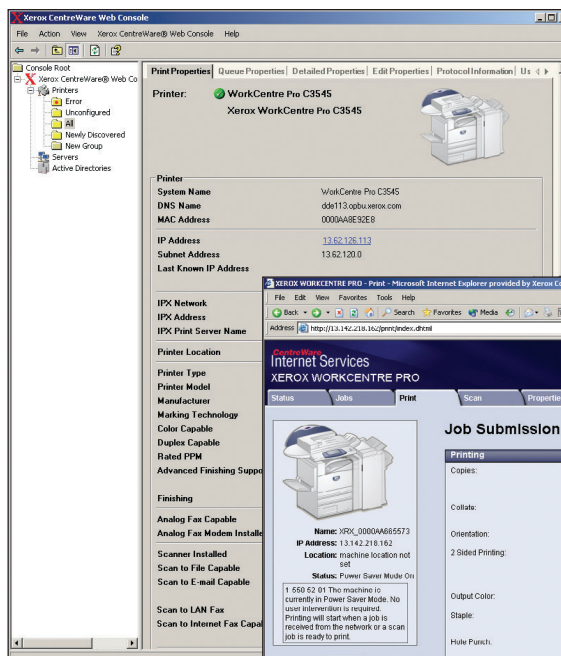
WorkCentre Pro C2128/C2636/C3545 includes CentreWare® print drivers with a clear, graphical user interface that provides an easy, intuitive way to interact with the printer. The drivers provide immediate desktop access to all WorkCentre Pro output functions. Advanced functions such as watermarks, invert image, print-to-edge, N-Up, booklet layout, transparency interleaving, covers and toner saver are simple to access.



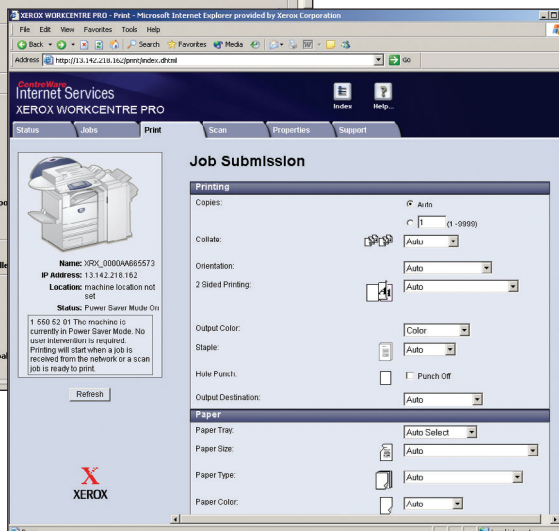
The top tab provides icons for the most commonly used functions such as selecting paper and document finishing. Plus with the "saved settings" feature, frequently used print job parameters can be stored for later reuse.

The driver also provides bi-directional information, indicating device status, job status, currently loaded paper sizes and types and installed options so there is no need to consult other software in order to obtain this information.

It couldn't be easier for the network administrator. WorkCentre Pro C2128/C2636/C3545 integrates seamlessly into virtually any network environment. No more trips from device to device to reset parameters, connect new users and establish queues. Network configuration is easy with CentreWare install wizards. On-board SNMP support lets customers integrate with other network frameworks. Innovative features like auto IP addressing, device naming and Ethernet speed sensing provide simple and automatic installation on networks. Xerox also addresses enterprise asset management with free enterprise management software plus an array of compatible network management tools for Sun, Novell, Microsoft and other environments. These products include an "embedded web browser" that allows users and IT personnel to perform detailed status checks and even change configuration without any special software tools.



Xerox CentreWare Web is web based software that installs, configures, manages, monitors and reports on the networked printers and multifunction devices throughout the enterprise – regardless of the manufacturer.



CentreWare Internet Services is a web server embedded in every WorkCentre/WorkCentre Pro. You can submit and monitor print jobs and machine status from anywhere – from your intranet to the world wide web.



**EVALUATE****EVALUATE RELIABILITY**

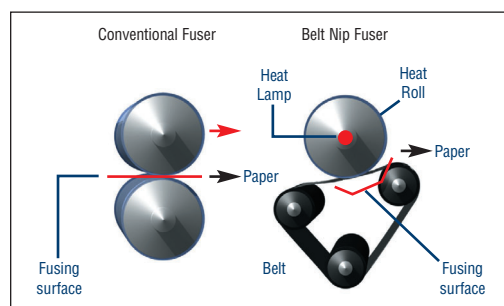
Productivity relies on tools that do their job day-in and day-out. Consider how often you need to intervene with the machine to **replace paper** or other consumables or to **clear jams** or other problems. How **easy is that intervention** and how **long is the device down**? If outside assistance is required, how **easy is it to arrange** and how **long do you have to wait**?

**ADVANTAGE  
XEROX****HOW XEROX COPYCENTRE C2128/C2636/C3545, AND WORKCENTRE PRO C2128/C2636/C3545 EXCEED THE RELIABILITY REQUIREMENT**

Simple paper paths and a minimum of moving parts means there is very little that can go wrong. Most components that wear over time can be replaced in a snap without a service call. You're up and running without delay.

Advances in color, image quality and speed are all built on market-proven, reliable technologies – and tested in the field on our DocuColor and Phaser series printers.

- The Micro Tandem Engine and Intermediate Belt Transfer enable faster color printing and copying speeds in a very small footprint. Four developer assemblies – one for each process color of cyan, magenta, yellow and black – process each color individually and then transfer that image onto the intermediate image belt, registering it with the previous images. So, rather than having the paper pass through the machine eight times for a two-sided print, it passes through only twice – for better registration and reliability.
- The short, straight paper path also allows WorkCentre Pro to handle heavyweight paper – up to 80 lb cover / 110 lb index / 220 gsm from all trays.
- The Belt Fuser has an extended contact area, which means toner adheres more completely for fast printing and a professional finish.



- Trickle Development, which adds fresh developer material as it's needed, assures that prints are consistent from the beginning of a job to the end.

Easy-access SMart Kit™ customer replaceable units include:

- EA toner cartridges
- Waste toner container
- Fuser module
- Print drums
- Staple cartridges



**EVALUATE****EVALUATE VERSATILITY**

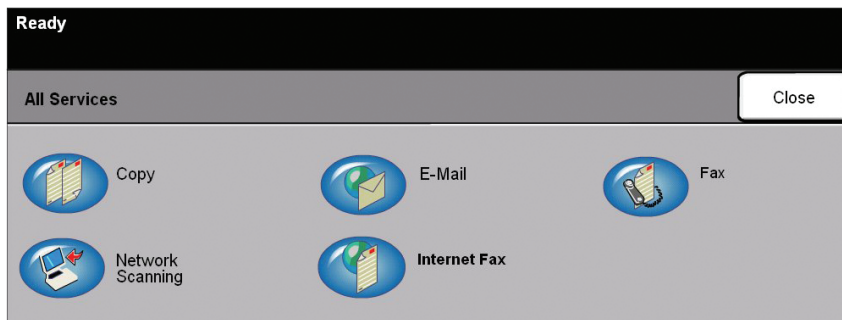
How many **multiple functions** can the device perform? How easy is it to **upgrade** from basic functions to more advanced functions? Can **specific functions be added** as requirements grow? Can multiple functions be performed **simultaneously**?

**ADVANTAGE  
XEROX****HOW XEROX COPYCENTRE C2128/C2636/C3545 AND WORKCENTRE PRO C2128/C2636/C3545 EXCEED THE VERSATILITY REQUIREMENT**

From postcard to ledger, wide ranges of paper sizes and weights are supported. Labels and cardstock run effortlessly with great reliability.

All trays support media up to 80 lb cover (220 gsm) plus auto duplex of media to 60 lb cover (169 gsm). Save money by bringing outsourced work in-house with the media and finishing flexibility of WorkCentre Pro C2128/C2636/C3545 or CopyCentre C2128/C2636/C35345.

Upgrade from CopyCentre to WorkCentre Pro as your needs change and you need more powerful document distribution capabilities such as network scanning, E-mail or additional faxing or network accounting capabilities.



Protect your critical information by adding Image Overwrite Security; an option that clears all images from your system's hard drives.

Give your hard copy documents new life. Make the best use of both hard copy and digital files. Use your WorkCentre Pro to move – manage – manipulate – capture – repurpose and distribute your documents via E-Mail, Internet Fax, Embedded Fax, Network Server Fax or Network Scanning. Choose the form or format that works best for you with Xerox optional document distribution services. Based on your needs, Xerox provides customized solutions to help improve your business processes by optimizing your document workflow. These solutions help you save money, enjoy greater productivity and share information easier and faster than ever before.

- **E-Mail hard copy** to anyone with an e-mail address. It's fast, simple, secure and cost-effective. Select addresses from your company's e-mail address book or type them in at the device user interface. E-Mail integrates easily with your existing e-mail infrastructure. There's no additional PC or server to administer or protect. Plus, with the built-in Authentication features, you control access and ensure e-mail messages are associated with the actual sender.

- **Internet Fax** to any remote Internet fax terminal, including another WorkCentre Pro. Avoid long-distance charges. Consolidate assets. Internet Fax takes advantage of your existing network and integrates easily with your e-mail server, eliminating costly long-distance charges. You can receive and print documents sent from any compliant Internet Fax device or e-mail client, allowing more effective use of assets and reducing the number of devices on your network. Need to know the document was received and printed? Just request a Delivery Status or Message Disposition Notification. You'll automatically receive a printed confirmation report and you can track the status through the job log at the device or via the embedded web server.
- **Network Server Fax** gives you an integrated solution that maximizes your network fax investment. It's as easy as walk-up copying. Maintain central management and control of your fax server while providing versatile walk-up fax input and output options at your WorkCentre Pro, including two-sided scanning and printing, stapling and even secure printing of your fax documents. There is no need for a separate telephone line and there are fewer devices and supplies to maintain. Visit the Xerox Partner web site for a complete listing of Xerox validated network server fax providers
- **Embedded Fax** is the solution for traditional telephone fax workflows. With CopyCentre or WorkCentre Pro Embedded Fax you can fax while printing or copying and eliminate separate fax machines. The dual-line option enables concurrent sending and receiving. Print faxes on special paper, stapled. Use the secure fax feature for faxes that are for your eyes-only.
- **Network Scanning** offers a whole new set of choices. This versatile solution lets you send hardcopy documents to a wide range of destinations where they can be integrated into existing networks and client applications or into customized image capture and workflow management solutions provided by Xerox or by Xerox Business Partners.
  - **Scan to PC Desktop®** scanning sends hard copy directly to a PC desktop where it can be easily moved into word processing applications, spreadsheets and databases for editing, distribution and storage.
  - **Scan to Applications/Network File Server** makes large volumes of hard copy available to anyone on your network
  - **Scan to Repository/Digital Archive** moves documents into electronic filing systems for easy access.
  - **Scan to E-Mail Distribution List** delivers hard copy to a workgroup or an entire department.
  - **Scan to Electronic Document Management System** makes sure your documents are safe, secure, and right where you can put your hands on them.
  - **Scanning Color Documents** preserves all the color information for later use in electronic files or color printing or copying.

Xerox is committed to providing an open product architecture to extend the value of Xerox WorkCentre Pro with an integrated value added solution from one of the many Xerox Partners. These solutions are available for printing, fax, scanning, email, and accounting to provide more value and versatility for your needs.

## EVALUATE

## EVALUATE FINISHING CAPABILITIES

What **finishing requirements** does your office or workgroup require? Does the finisher have the **capacity** to meet your demands? Can the finisher **staple or hole-punch** your multi-page documents in a variety of locations? Can multi-page documents be **pre-collated** to speed the output? Can you select from **multiple finishers** to meet your specific requirements?

## ADVANTAGE XEROX

### HOW XEROX COPYCENTRE C2128/C2636/C3545 AND WORKCENTRE PRO C2128/C2636/C3545 EXCEED THE FINISHING CAPABILITIES REQUIREMENT

Whether you need unstapled output, 50-sheet multi-positioned stapled output, hole punched documents, or fully finished saddle-stitched booklets, CopyCentre or WorkCentre C2128/C2636/C3545 have finishing options to meet your needs.

The Office Finisher can hold up to 1,000 sheets and provides up to 50-sheet stapling in a variety of locations.

The Advanced Office Finisher boosts output capacity to 3,500-sheets and adds hole-punching capability.

The Professional Finisher extends the capabilities to include true saddle stitch booklet making.

You can create training brochures, newsletter, manuals and other professional looking documents on demand in color and black and white.



#### Sort and collate

Save valuable time



#### Stapling

Multiple position and placement to enhance usability



#### Hole punch

Options to meet worldwide conventions



#### Folding

V-fold brochures are printed, folded and ready for distribution



#### Booklet

Saddle-stitch booklets inhouse to reduce costs and eliminate delays



Office Finisher



Advanced Office Finisher



Professional Finisher

**EVALUATE****EVALUATE SECURITY CAPABILITIES**

What type of security requirements does your office require? Does the device have the **security features** to meet this demand? Can the device access be **protected by a password**? Does the device **remove latent images** on disk drives and in memory? Does the service provider have **bonded service personal**?

**ADVANTAGE  
XEROX****HOW XEROX COPYCENTRE C2128/C2636/C3545 AND WORKCENTRE PRO C2128/C2636/C3545 EXCEED THE SECURITY REQUIREMENT**

Both CopyCentre C2128/C2636/C3545 and WorkCentre C2128/C2636/C3545 protect your investment with device access passwords and an internal auditor to control usage and access to device features.

Network Authentication restricts access to scan, e-mail and fax features by validating network user names and passwords prior to the use of these network features. It allows identification of user with their scan, no anonymous sending.

With the optional WorkCentre Pro Network Accounting feature, you control access and track usage on a centralized basis. You can get up-to-date information on how the WorkCentre Pro device is being used by account and user, including time and date of the activity. This solution requires integration with an accounting server available through one of the Xerox Partners.

Confidentiality of your sensitive business information is maintained with an optional image overwrite security feature that electronically erases data that had been processed to the hard disk in print, copy, scan, internet fax and server fax modes. This option eliminates data as a part of routine job processing.

The Foreign Device Interface Kit controls device access and accounting via magnetic card readers, coin devices, and third-party accounting solutions.



## EVALUATE

## EVALUATE COST CONTROL

One of the most important things to consider when evaluating a device with color capabilities is to understand how you can control color usage. Does the device charge a premium for black and white printing? Can the device automatically check for black and white and color pages?

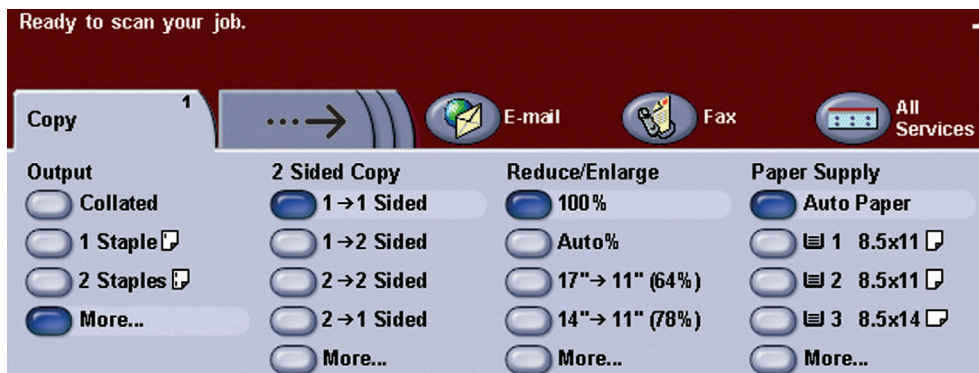
## ADVANTAGE XEROX

### HOW THE XEROX COPYCENTRE C2128/C2636/C3545 AND WORKCENTRE PRO C2128/C2636/C3545 EXCEED THE COST CONTROL REQUIREMENT

Both the CopyCentre C2128/C2636/C3545 and WorkCentre C2128/C2636/C3545 separate color and black-and-white page counts to allow for separate billing of these pages.

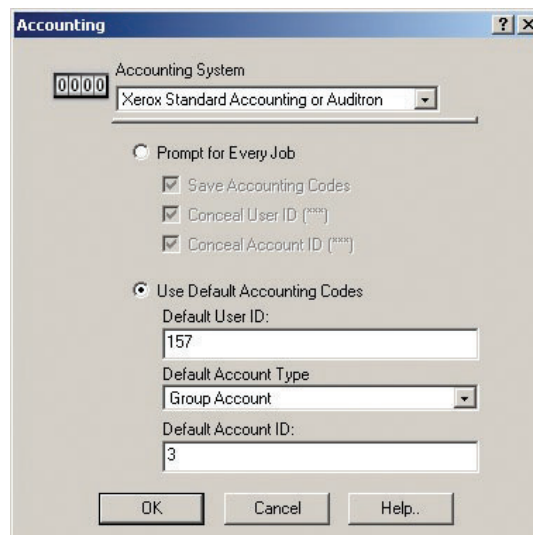
Both of these products take care of the black and white pages automatically for you:

- By selecting Automatic Color Copy, the device detects black-and-white and color pages separately in the original source document and prints and charges for them at their different rates. In addition, you can select Black-and-White Only to copy color documents in black-and-white. These output settings can be assigned as the copy default for the device.



- By selecting Automatic Color Print the device detects black-and-white pages within a print job even with the output selection set to Color. The black-and-white printed pages are then printed and charged at the black-and-white rate.

Print and Copy auditron can both track and control usage. You can configure the auditron to limit the number of color pages, black-and-white pages, or both that a particular user or group may use. For example, you can limit certain users to black-and-white only.



## SECTION 3

# Configurations, Competitive Information, Service & Support

### COMPETITIVE COMPARISON:

	<b>Xerox CopyCentre/ WorkCentre Pro C2128 / C2636 / C3545</b>	<b>Canon imageRUNNER C3200</b>	<b>Canon imageRUNNER C6800</b>	<b>Ricoh Aficio 2232C / 2238C</b>	<b>Konica-Minolta Bizhub C350</b>
<b>GENERAL</b>	Full-color copier, printer Optional: Scanner, Fax	Full-color copier, printer Optional: Scanner, Fax	Full-color copier, printer Optional: Scanner, Fax	Full-color copier, printer Optional: Scanner, Fax	Full-color copier, printer Optional: Scanner, Fax
Engine architecture	Micro-Tandem Intermediate transfer belt	Tandem engine	Tandem engine	Tandem engine	LED, Tandem engine
Toner	Emulsion Aggregation (EA)	Chemical S Toner	Chemical S Toner	Extrusion Milled	Simitri Polymerized Toner
Duty cycle	135,000 pages per month	50,000 pages per month	280,000 pages per month	Info Not Available	100,000 pages per month
<b>PRINTER</b>					
Speed	21 ppm color / 28 ppm black 26 ppm color / 36 ppm black 35 ppm color / 45 ppm black	32 ppm color / 32 ppm black	16 ppm color / 68 ppm black	24 ppm color / 32 ppm black (600 dpi only) 28 ppm color / 38 ppm black	22 ppm color / 35 ppm black
First-page-out time	6.1 seconds black 8.5 seconds color	9.8 seconds black 13.1 seconds color	5.3 seconds black 12.2 seconds color	8 seconds black 10 seconds color	6.8 seconds black 12.8 seconds color
Warm-up from low power	30 seconds	6 minutes	8.5 minutes	101 seconds	99 seconds
Resolution (dpi)	1200 x 1200, 600 x 600	2400 x 600, 600 x 600	2400 x 600, 600 x 600	1200 x 1200, 600 x 600	600 x 1800, 600 x 600
Controller	Xerox SMart Controller	Canon or EFI	Canon or EFI	Ricoh	Konica-Minolta, EFI
Memory (standard/max)	CopyCentre 256/256 MB WCP 384/768 MB	Canon: 768 / 768 MB EFI: 128 / 256 MB	Canon: 768 / 768 MB EFI: 128 / 256 MB	768 MB	Konica-Minolta: 256 / 512 MB EFI: 128 / 256 MB
Processor	Intel Celeron 733 MHz	Canon: 250 MHz EFI: 850 MHz	Canon: 250 MHz EFI: 850 MHz	533 MHz	Konica-Minolta: 350 MHz EFI: 700 MHz
Hard drive	CopyCentre 18 GB WCP 2 x 18 GB	Canon: 40 GB EFI: 10 GB	Canon: 40 GB EFI: 20 GB	80 GB	Konica-Minolta: 40 GB EFI: 10 GB
PDL	PostScript 3 emulation, PCL 5c	Canon: PCL 5c, PostScript 3 emulation, UFR; EFI: PCL 5c, Adobe PostScript 3	Canon: PCL 5c, PostScript 3 emulation, UFR; EFI: PCL 5c, Adobe PostScript 3	PCL 5c, RPCS Optional: Adobe PostScript 3	Konica-Minolta: PCL 5c; EFI: PCL 6, Adobe PostScript 3
RIP while print	Yes	Yes	Yes	One job only	Optional with EFI
USB interface	Optional	Canon: Yes EFI: No	Canon: Optional EFI: No	Optional	Konica-Minolta: No EFI: No
Front panel queue	Yes	Yes, separate for each function	Yes, separate for each queue	No	Info not available
<b>PAPER HANDLING</b>					
Duplex	Standard automatic	Standard automatic	Standard automatic	Standard automatic	Optional automatic
Standard paper sources / Total capacity	2 trays + 100-sheet bypass = 1,140 sheets	2 trays + 100-sheet bypass = 1,200 sheets	2 trays + 100-sheet bypass = 1,200 sheets	2 trays + 100-sheet bypass = 1,100 sheets	1 tray + 150-sheet bypass = 400 sheets
Maximum paper sources / Total capacity	4 trays + 100-sheet bypass = 2,180 sheets or 2 trays + 100-sheet bypass + HCT = 3,140 sheets	6 trays + 100-sheet bypass = 5,100 sheets	6 trays + 100-sheet bypass = 7,700 sheets	4 trays + 100-sheet bypass = 3,100 sheets	5 trays + 150-sheet bypass = 3,400 sheets
Paper weights (main trays)	64 to 220 gsm / 17 to 110 lb. Index	64 to 209 gsm / 17 to 110 lb. Index	64 to 209 gsm / 17 to 110 lb. Index	60 to 105 gsm / 16 to 28 lb. bond	60 to 90 gsm / 16 to 24 lb. bond
Paper sizes (inches)	5.5 x 8.5 to 11 x 17 / A3	10.5 x 7.25 to 12 x 18	3.875 x 5.56 to 13 x 19	8.5 x 11 to 11 x 17	5.5 x 8.5 to 11 x 17 / A3 +
Paper weights (bypass)	60 to 220 gsm / 16 to 110 lb. Index	64 to 253 gsm / 17 to 140 lb. Index	64 to 253 gsm / 17 to 140 lb. Index	60 to 163 gsm / 16 to 90 lb. Index	60 to 253 gsm / 16 to 140 lb. Index
Bypass paper sizes (inches)	4.13 x 5.83 to 12 x 19	3.1 x 5.875 to 12.625 x 18	3.875 x 5.8 to 13 x 19	7.5 x 10.5 to 12 x 18	4 x 6 to 12 x 18



## COMPETITIVE COMPARISON:

	Xerox CopyCentre/ WorkCentre Pro C2128 / C2636 / C3545	Canon imageRUNNER C3200	Canon imageRUNNER C6800	Ricoh Aficio 2232C / 2238C	Konica-Minolta Bizhub C350
<b>SCANNER</b>					
Scan resolution (dpi)	600 x 600, 400 x 400, 200 x 200	600 x 600	600 x 600	600 x 600	600 x 600
LDAP	Yes	Yes	Yes	Yes	Yes
Authentication	Yes	Ecopry: Yes / Universal Send: No	Ecopry: Yes / Universal Send: No	Yes	Info not available
Scan to Server	Yes	Yes	Yes	Yes	Yes
Scan to Email	Yes	Yes	Yes	Yes	Yes
<b>COPIER</b>					
Scan speed	32 ppm color, 32 ppm black	23 ppm color, 36 ppm black	50 ppm black	24 ppm color, 32 ppm black	35 ppm
Paper sizes (inches)	5.5 x 8.5 to 11 x 17	5.5 x 8.5 to 11 x 17 (A5R - A3)	5.5 x 8.5 to 11 x 17 (A5R - A3)	5.5 x 8.5 to 11 x 17	5.5 x 8.5 to 11 x 17 / A3+
DADF	Optional, 50 originals	Optional, 30 originals	Standard, 100 originals	Standard, 80 originals	Optional, 100 originals
Maximum original size	11 x 18.7 / A3	11 x 17 / A3	11 x 17 / A3	11 x 17	11 x 17 / A3
Paper weights	13 to 32 lb. bond / 50 to 120 gsm	14- 28 lb / 52 - 105 gsm	13- 32 lb / 49 - 120 gsm	11- 34 lb / 49 - 120 gsm	13- 29 lb / 49 - 105 gsm
<b>FAX</b>					
Internet Fax	Optional	Optional	Optional	Optional	Standard
Fax (phone-dial)	Optional	Optional	Optional	Optional	No
PC Fax	Optional (Office Fax Pro)	Optional	Optional	Optional	No
<b>FINISHER</b>					
Sorter capacity	Office Finisher: 1,000 sheets; Advanced Office Finisher: 3,500 sheets; Professional Finisher: 2,000 sheets + booklet tray	Office Finisher: 1,000 sheets Saddle Finisher: 2,000 sheets	Office Finisher: 1,000 sheets Saddle Finisher: 2,000 sheets	Office Finisher: 3,000 Office Finisher: 3,000	Staple Finisher: Info not available; Booklet Finisher: Info not available
Staple capacity / # of positions	50 sheets (letter) / single-position, any corner	50 sheets (letter) / multi-position	50 sheets (letter) / multi-position	50 sheets (letter) / 2 positions	Info not available
Electronic Pre-Collation	Yes	Yes	Yes	Info not available	Info not available
Features	Office Finisher: 1 tray, staple sort; Advanced Finisher: Two trays, staple, hole punch; Professional Finisher: 3 trays, staple, hole punch, saddle stitch	Office Finisher: 1 tray, staple sort; Office Finisher 2: Two trays, staple sort; Saddle Finisher: 2 trays, saddle stitch, hole punch	Office Finisher: 2 trays, staple sort; Saddle Finisher: 3 trays, saddle stitch, hole punch	Multi-tray Finisher: Two trays; Booklet Finisher: 1 tray, staple, sort, v fold	Stapler Finisher: Sort, staple; Booklet Finisher: Saddle stitch, v fold, sort, staple, and hole punch optional
<b>ADDITIONAL INFORMATION</b>					
Dimensions (H x W x D in inches)	43.9 x 53 x 25	31.5 x 24.4 x 31	46.9 x 26.75 x 33.5	33.8 x 26.4 x 27.5	35.5 x 28.75 x 30.25
Weight	502 lbs (227.7 kgs)	277 lbs	498 lbs	264 lbs	220 lbs
Power Requirements	110-127V, 60Hz, 15A	120V, 60 Hz, 15A	120V, 60Hz, 16A	120V, 60 Hz, 12A	120V, 60 Hz, 15A
Energy Star	Yes	Yes	Yes	Yes	Yes
Advantages / Disadvantages	<ul style="list-style-type: none"> <li>• Resource management</li> <li>• Overall productivity</li> <li>• True 1200 x 1200 dpi</li> </ul>	<ul style="list-style-type: none"> <li>• Long warm-up time</li> <li>• Long warm-up time</li> <li>• Slow FPOT</li> </ul>	<ul style="list-style-type: none"> <li>• Slow color print speed</li> <li>• Long warm-up time</li> <li>• Long warm-up time</li> </ul>	<ul style="list-style-type: none"> <li>• Lessens productivity</li> <li>• No queue</li> <li>• RIP-while-print one job only</li> </ul>	<ul style="list-style-type: none"> <li>• Slower print speed</li> <li>• Duplex optional</li> <li>• Postscript is a chargable option</li> </ul>



## CONFIGURATIONS

There are two product sub-brands available in three speed bands:

- CopyCentre C2128/C2636/C3545 – Copier with essential digital copier functionality
- WorkCentre Pro C2128/C2636/C3545 – Advanced Multifunction System with full digital copier walk-up functionality plus advanced printing features and software options.

All models have optional embedded fax and multiple finishing options.

CONFIGURATION COMPONENTS	COPY CENTRE C2128/C2636/C3545	WORK CENTRE PRO C2128/C2636/C3545
<b>Base Processor</b>		
<ul style="list-style-type: none"> <li>• Print engine and scanner</li> <li>• Touch Screen LCD User Interface</li> <li>• 256MB MB EPC RAM</li> <li>• 18 GB Hard Drive minimum</li> </ul>	Standard	Standard
<b>Network Controller</b>		
<ul style="list-style-type: none"> <li>• Processor – 733 MHz CPU</li> <li>• ESS RAM (upgradeable to 256MB MB)</li> <li>• ESS Hard Disk – 18 GB minimum</li> <li>• Ethernet 10/100 MB interface (auto-detect)</li> <li>• PCL 5C print interpreter</li> <li>• PostScript 3 emulation print interpreter</li> <li>• Native TIFF print interpreter</li> </ul>	NA	Standard
	NA	128MB MB
	NA	Standard
	NA	Standard
	NA	Standard
	NA	Standard
	NA	Standard
<b>Input Components</b>		
<ul style="list-style-type: none"> <li>• 50-Sheet Duplex Automatic Document Feeder</li> <li>• Two user adjustable Paper Trays (520 sheets each)</li> <li>• Bypass Tray (100 sheets)</li> <li>• Two optional High Capacity Feeders (1 x 2,000 or 1 x 1,600)</li> </ul>	Standard	Standard
<b>Output Components (must choose one)</b>		
<ul style="list-style-type: none"> <li>• Office Finisher – 1,000-sheet stacker/stapling tray, 50-sheet multi-position stapling</li> </ul>	Optional	Optional
<ul style="list-style-type: none"> <li>• Advanced Office Finisher – 3,000-sheet stacker/stapling capacity and 500-sheet top tray. 50-sheet multi-position stapling and hole punch (3 hole in America, 2 or 4 hole in Europe)</li> </ul>	Optional	Optional
<ul style="list-style-type: none"> <li>• Professional Finisher – 1,500-sheet stacker/stapling tray, 500-sheet top tray, and booklet tray 50-sheet multi-position stapling, saddle-stitch booklet making, V- Folding and hole punch (3 hole in America, 2 or 4 hole in Europe)</li> </ul>	Optional	Optional
<b>Accessories</b>		
<ul style="list-style-type: none"> <li>• Foreign Device Interface</li> <li>• Single-line embedded fax</li> <li>• Dual-line embedded fax</li> </ul>	Optional	Optional
	Optional	Optional
	Optional	Optional
<b>Output Accessories</b>		
<ul style="list-style-type: none"> <li>• 2/4 or 3 Hole punch (for Advanced Office or Professional Finisher)</li> </ul>	Optional	Optional
<b>Network Accessories</b>		
<ul style="list-style-type: none"> <li>• Network Scanning with E-Mail (basic scan to network servers, FlowPort, 3rd party applications). Includes S2X Card, LDAP and Authentication</li> </ul>	NA	Optional
<ul style="list-style-type: none"> <li>• CentreWare Scan to PC Desktop Standard Edition</li> </ul>	NA	Optional
<ul style="list-style-type: none"> <li>• CentreWare Scan to PC Desktop Deluxe Edition</li> </ul>	NA	Optional
<ul style="list-style-type: none"> <li>• Internet Fax &amp; Network Server Fax enablement (Network Sever Fax requires 3rd party server/software)</li> </ul>	NA	Optional
<ul style="list-style-type: none"> <li>• Network Accounting enablement (requires 3rd party server/software)</li> </ul>	NA	Optional
<ul style="list-style-type: none"> <li>• Image Overwrite Security Kit (HDO/IJO for ESS Disk)</li> </ul>	NA	Optional
<ul style="list-style-type: none"> <li>• USB Printer Port Kit</li> </ul>	NA	Optional
<ul style="list-style-type: none"> <li>• Office Fax Pro</li> </ul>	NA	Optional

**Unrivalled service and support**

Behind every Xerox product is a large network of customer support that's unrivalled in the industry and available when you need it. Xerox service professionals use leading-edge technologies to keep you up and running. They're even linked to the engineers who designed your product, so you can be confident when you choose Xerox. And genuine Xerox supplies are always easily available.

**Total satisfaction guaranteed**

The exclusive Xerox Total Satisfaction Guarantee, recognized as unique in the industry, covers every Xerox CopyCentre® and WorkCentre Pro® device which has been continuously maintained by Xerox or its authorized representatives under a Xerox express warranty or Xerox Maintenance agreement. You decide when you're satisfied.

## ADDITIONAL INFORMATION SOURCES

### The Front Panel

The Front Panel offers tools and information pages to help with machine set-up, feature selections, solve operational problems, media feed and supply issues.

### The Customer Documentation contains:

- Read Me First
- Quick Reference Guide
- Training and Information CD
- System Administrators CD
- CentreWare Network Services\*
  - Print Drivers
  - Management Tools

\*WorkCentre Pro Systems only

### On the Web

Visit [www.xerox.com/office](http://www.xerox.com/office) for:

- Product, supplies, and support information
- Downloading drivers
- Finding your local reseller
- On-line documentation

Visit [www.xerox.com/office/support](http://www.xerox.com/office/support) for:

- Support and service information including the same troubleshooting knowledge base used by Xerox Customer
- Support staff to provide the latest technical information on:
  - Application issues
  - Errors
  - Print-quality issues
  - Troubleshooting



CopyCentre®  
C2128/C2636/C3545

WorkCentre® Pro  
C2128/C2636/C3545



## Questions? Comments? Problems?

*If you have any questions or issues with your evaluation of this  
multifunction product, please contact your Xerox sales representative  
or call 1-800-ASK-XEROX:*

*Or visit us on the web at: **www.xerox.com/office***



© 2004 XEROX CORPORATION. All rights reserved. XEROX® The Document Company®, the digital X®, WorkCentre®, CopyCentre® and FreeFlow™ are trademarks of or licensed to XEROX CORPORATION. In support of Xerox's environmental leadership goals, these models may contain some recycled components that are reconditioned. Support Center Practices (SCP) Certification is a registered trademark of Service Strategies Corporation. ENERGY STAR® is a U.S. registered mark. As an ENERGY STAR® Partner, Xerox Corporation has determined that these products meet the ENERGY STAR® guidelines for energy efficiency. Terra Choice Environmental Services, Inc., of Canada has verified that these products conform to all applicable Environmental Choice EcoLogo requirements for minimized impact to the environment. Product information and/or specifications are subject to change without notice. Printed in U.S.A. 10/04 610P720560 W45EG-01UB