

SHARP®

MULTIFUNCTION COLOR DOCUMENT SYSTEMS

UNPARALLELED WORKGROUP PERFORMANCE WITH ON-DEMAND COLOR.



MX-6201N
MX-7001N



THE RENAISSANCE OF COLOR

MX-6201N/MX-7001N SERIES

A NEW DIMENSION OF PRODUCTIVITY... WITH THE ADDED VALUE OF DAZZLING, HIGH-IMPACT COLOR

With best-in-class features and the versatility of high-quality, on-demand color, the new Sharp MX-6201N/MX-7001N Document Systems deliver all the muscle you need to keep up with the pace of your business. These powerful multifunction document systems can streamline your document workflow like never before. Enhance your capabilities with added functionality and a 1 GHz multi-tasking controller for large-volume tasks. Standard features like copy, print, scan and document filing deliver versatile functionality that saves time. Ideal for larger workgroups, the MX-6201N/MX-7001N Document Systems offer an array of paper handling capabilities and optional finishing features that get the job done. Add impact to your communications without breaking the bank with the flexibility of brilliant, on-demand color. And with support for Sharp OSA™ technology, Sharp's innovative development platform, you can boost productivity with one-touch access to your business applications right from the LCD display. The large color touch-screen display features customizable "short cut" keys for increased efficiency in high-volume environments. For unprecedented security, the MX-6201N/MX-7001N Document Systems deliver several sophisticated options that protect your data by securing walk-up, scan and network access—so your documents remain secure.





UNPRECEDENTED PERFORMANCE FOR HIGH-VOLUME WORKGROUPS

Productive

Flexible

Easy-to-Use

Accessible

Secure

- High quality color output up to 50-ppm and crisp B/W output up to 62/70-ppm
- Performance-driven **1 GHz Multi-tasking Color Document System** with **optional EFI™ Fiery® controller** to manage your unique environment
- Versatile application integration with Sharp **OSA technology** enables users to access network applications right from the LCD panel
- Sharp's award-winning **multi-level** network security
- Customizable icon-driven **color touch-screen display**
- **One-touch ImageSEND™ technology** facilitates scans to USB devices, network folders, e-mail and more
- Standard **150-sheet Duplexing Document Feeder** with **Color Scan²™ technology**
- Large **6,600-sheet** maximum on-board paper supply (3,100 standard)
- Efficient **Cardshot, Page Stamp** and **Tandem Copy**
- Built-in **PCL6/PCL5c printing** with Direct Print and PostScript® 3™ option
- Standard **80 GB HDD** offers enhanced job spooling and Document Filing
- Advanced **web-based Device Management** and on-board user manuals
- Optional **external keyboard** for enhanced convenience *
- Environmentally focused; supports **Energy Star®** and **RoHS**
- Optional **Finishing, Page Inserter** and **Hole-punch** accessories to reduce paper handling and increase productivity
- A choice of **large-capacity paper trays** for high-volume workgroups
- Super G3 Fax option offers **PC Faxing** and **Inbound Routing**
- **My Sharp™** web-based 24/7 training

* Available Summer 2007

HIGH-PERFORMANCE FEATURES



POWER-UP YOUR WORKGROUP WITH IMPRESSIVE FEATURES AND WORLD-FAMOUS RELIABILITY



A 6,600-sheet online paper capacity is available with options.

VERSATILE PAPER HANDLING

At an impressive 62/70-ppm in B&W and a speedy 50-ppm in Color, the new MX-6201N/7001N Series delivers high-quality lightning-fast output, perfect for busy workgroups. Sharp's new **multi-tasking controller** is at the heart of it all. With more speed and processing power, you can complete tasks simultaneously for improved efficiency. With a **standard paper capacity of 3,100 sheets**

(upgradable to 6,600 sheets) and a standard **150-sheet duplex single pass document feeder**, these advanced performers can manage large-scale projects with ease...so your workflow virtually never slows down. For even more power and versatility, you can add the **3,000 or 3,500-sheet large capacity tray**, available in either tabloid or letter-only models. Additional paper-handling features including **trayless duplexing**, **electronic sorting** and **integrated offset stacking** make it easy to produce more booklets, proposals and presentations...without relying on external sources. The result? More control over your workflow, and more peace of mind.

HIGH-EFFICIENCY SCANNING WITH COLOR SCAN²

To maximize productivity, the new Sharp MX-6201N/7001N Series offers Sharp's award-winning **Color Scan² technology**. Now you can blaze through duplexed originals...whether they are B&W or color, with simultaneous 2-sided scanning. And since the document is scanned in a single pass, it takes only half the time to process! Simply load your document into the tray, press a few buttons, and walk away. **Scan² technology** makes it faster and easier to duplicate virtually any type of multi-page document. Produce employee booklets, company newsletters—almost anything your business needs to communicate—quickly and easily.



EXTERNAL KEYBOARD OPTION FOR ENHANCED INTERACTION

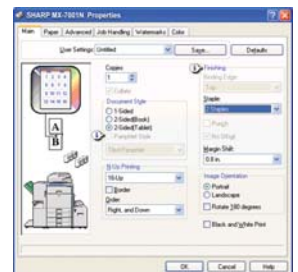
If your workgroup performs a significant amount of data entry at the LCD, you can easily add the **optional external keyboard** for more convenience.* Ideal for environments that handle repetitive scanning and archiving of documents, a keyboard significantly speeds up the process and saves time.

EASY ACCESS TO SHARED FILES

With convenient **Document Filing**, you can standardize, share and store frequently-used files such as fax cover sheets, distribution order forms, HR forms, and more...right on the MFP. A **40 GB hard drive partition** provides plenty of storage capacity, so everyone can access the same files. In environments where security is required, you can easily restrict access to select users. With private storage features, PIN-code access, and **My Folders**, you can rest assured that your document security is not compromised. Sharp's new **Quick Folders** feature enables you to temporarily store and retrieve documents quickly and easily. Plus, an integrated backup utility automatically backs up your data.

HIGH-QUALITY NETWORK PRINTING

Out-of-the-box, the MX-6201N/7001N Series offers **600 x 600 dpi B&W and Color printing** right from your desktop. Simple plug-n-play operation makes it easy to take advantage of advanced feature sets in a snap. The **watermark feature** automatically prints messages on the pages, so drafts and confidential documents can easily be identified. And with **cover page printing**, **overlay print** and **pamphlet mode**, you can produce many jobs internally, minimizing outsourcing. With drag-n-drop simplicity, integrated **PDF printing** lets you print a PDF without even opening the file. The **optional Postscript driver** delivers extensive color control options, so you can manage color consistency right from your desktop.



DUPLICATE ID CARDS IN A SNAP

For increased efficiency in healthcare and insurance environments, the convenient **Cardshot** feature saves time and resources by copying both sides of a license or ID card onto a single sheet of paper.

INTUITIVE TOUCH-SCREEN DISPLAY

The new MX-6201N/7001N Series offers a unique **Customizable User Interface** that's ideal for large enterprises. With the ability to display three virtual "short-cut" keys on the LCD display, you can access the most widely-used commands in an instant. These "short-cut" keys can also be customized so that different users can access unique "short-cuts" based on their specific needs. The interface can even display different languages based on the user's login. With a large **10.4-inch (diagonally measured) color LCD touch-screen**, the intuitive, icon-driven graphics provide access and instructional guidance to advanced features, so even occasional users will find it easy to use.

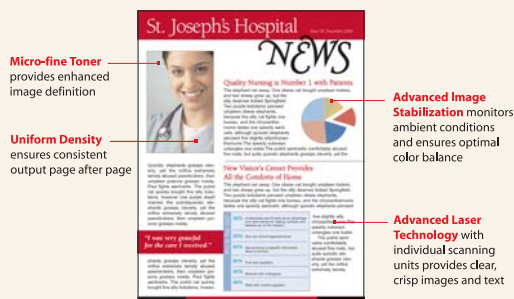


The large 10.4" (diagonally measured) Color LCD touch-screen display is intuitive and easy to use. New customizable "short-cut" keys recall frequently used documents or settings in a flash.

ADVANCED FUNCTIONALITY

DAZZLING IMAGE QUALITY

Bring your business communications to life with **brilliant, on-demand color** and crisp, B&W text. With best-in-class multifunction features, the MX-6201N/7001N Series virtually eliminates the need for separate peripherals, so you can reduce office hardware and minimize their associated costs. These multi-tasking performers can produce just about anything—booklets, newsletters, proposals, marketing collateral, and more—giving you all the power and control you need. Add Sharp's **advanced Micro-fine Toner Technology** and **Image Stabilizing System**, and you get consistent image quality throughout the entire run, so your documents always look professional.



PROFESSIONAL-QUALITY FINISHING

The MX-6201N/7001N Series offers several modular finishing options to automate paper handling as well as give your documents a professional appearance. Presentations, new employee welcome kits and customized sales and marketing collateral can be easily printed and finished in-house. The optional **4,000-Sheet Finisher** speeds through large projects, giving you complete control over deadlines. The robust **Saddle-Stitch Finisher** delivers **3-position stapling, center folding, 50-sheet stapling capacity**, and more. To add flair and organization to your jobs, you can insert covers, tabs or special media with the **Post-Sheet Inserter**. And for even more versatility, add the hole-punch unit for two- and three-hole punching.



MX-FNX3
4,000-sheet Finisher



MX-FNX4
4,000-sheet
Saddle-Stitch Finisher

A choice of finishers with optional hole-punching and inserting makes it easy to reduce costs on professional printing and finishing.



ENVIRONMENTALLY-FRIENDLY

Designed to minimize downtime and reduce environmental impact, the MX-6201N/7001N Series' **Micro-fine Toner Technology** offers longer replacement intervals and utilizes less packaging material. Plus, it's **RoHS** and **Energy Star compliant**. In fact, new modes to reduce operational power give the MX-6201N/7001N Series one of the lowest power consumption ratings in the industry.



In addition to being environmentally friendly, the front-loading color-coded toner cartridges are easy to replace. You can even change the black toner cartridge while the system is running.



MX-LCX2
3,500-sheet
Large Capacity Tray



MX-LCX3
3,000-sheet
Large Capacity Tray

iSelect from two large capacity trays: The MX-LCX2 holds 3,500 sheets of letter-sized paper. The MX-LCX3 accommodates 3,000 sheets and adjusts to letter-R, legal, or tabloid-sized papers.

ADVANCED SECURITY



DATA SECURITY

To help protect your data, the MX-6201N/7001N Series offers six layers of security, making Sharp the optimum choice to protect employee privacy and intellectual property. As the leader in office equipment security, Sharp makes it easy for any business or government entity to safely deploy digital copying, printing, scanning and faxing.



AUTHORITY GROUPS

Advanced account management enables administrators to set authority groups for access to features of the MX-6201N/7001N Series. Administrators can control which department, for instance, has full access to copying, printing, scanning and/or fax. Walk up users enter a 5-8 digit code, Local Name and Password, or LDAP User Authentication to access their features assigned to their group.



DOCUMENTS REMAIN CONFIDENTIAL

To help protect your printed documents from unauthorized viewing, the MX-6201N/7001N Series offers **Confidential Printing** that requires users to enter a PIN code in order to print a queued document. Additionally, **Secure Fax Release** ensures received fax documents are held in memory until an authorized user enters a PIN code, so compliance with healthcare regulations like HIPAA is easier.



NETWORK SCANNING ACCESS

To help protect your network from unauthorized e-mail communications, the MX-6201N/7001N Series supports user authentication, requiring users to login before performing any network scanning operations.



CONTROL DEVICE ACCESS OVER THE NETWORK

To help restrict access to the device over the network, the MX-6201N/7001N Series offers **Secure Sockets Layer** (SSL Encryption) **IP/MAC address filtering**, protocol enable/disable and port management for maximum security.



DATA ERASE AND ENCRYPTION*

To help protect your data, the MX-6201N/7001N Series offers an optional data security kit that encrypts document data using **AES** (Advanced Encryption Standard) **128-bit encryption**. Additionally, the data security kit erases the memory on the hard drive by overwriting the encrypted data up to seven times, offering an unprecedented level of assurance.



TRACKING AND AUDITING INFORMATION

Legislation and industry policies require companies to be more aware of information flow from their offices. Sharp offers hardware and software accessories that help you control, access, and track usage across your entire office equipment fleet.

These scalable security offerings aim to protect your intellectual property, preserve confidential information and help your business to meet regulatory requirements, such as the Health Insurance Portability and accountability Act (HIPAA), and the Gramm Leach Bliley Act (GLB). For additional information visit: www.sharppusa.com/security

*Data Security Kit not available at time of launch

VERSATILE SCALABILITY

LEVERAGE YOUR INVESTMENT WITH INCREASED FUNCTIONALITY

The MX-6201N/7001N Series modular design enables you to fully leverage your investment in data management infrastructure. While others are limited to a small circle of productivity, Sharp's newest innovation, **Sharp OSA™ technology**, allows users to utilize the power of their back-end systems **right from the control panel**. It's really a new way of thinking with *"power at the panel"* for more automated tasks and a streamlined workflow.

STREAMLINE DOCUMENT WORKFLOW

Virtually seamless to the user, Sharp OSA technology can help save time and increase the efficiency of everyday tasks. This technology allows the MX-6201N/7001N Series to display choices that were once only available on a desktop PC. With one-touch access to business applications via Sharp OSA integration, you can start and finish a document distribution task in just a few steps.

ROBUST PERFORMANCE

The Sharp OSA Development Platform is the logical choice to compliment your existing infrastructure by providing fast, flexible access to documents and applications—no matter where you are in the office. With tighter integration with network security and accounting applications, you can control access and track jobs more efficiently. A comprehensive set of management tools delivers the ability to control your workflow easily, efficiently, and more securely.

EASY TO CUSTOMIZE

Sharp OSA technology also provides another crucial component to your workflow: customization. With the ability to personalize applications and processes specific to your business, Sharp OSA technology can help eliminate redundancy and streamline workflow, helping to save time and optimize productivity. And since Sharp OSA technology utilizes industry-standard network protocols such as SOAP, XML, and XHTML, third-party software developers can deliver customized solutions to your business faster than ever.

SHARP OSA TECHNOLOGY AT A GLANCE

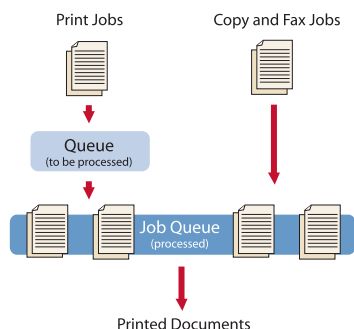
- Automate tasks and save time with seamless integration between the MX-6201N/7001N Series and network applications
- Minimize set-up and installation of multiple Sharp products with centralized applications
- Helps eliminate repetitive tasks and streamline workflow, increasing efficiency
- Maximize your return on investment with tighter integration among IT assets
- Deploy new solutions faster with industry-standard programming



ADVANCED DISTRIBUTION FEATURES TO JUMP-START YOUR PRODUCTIVITY

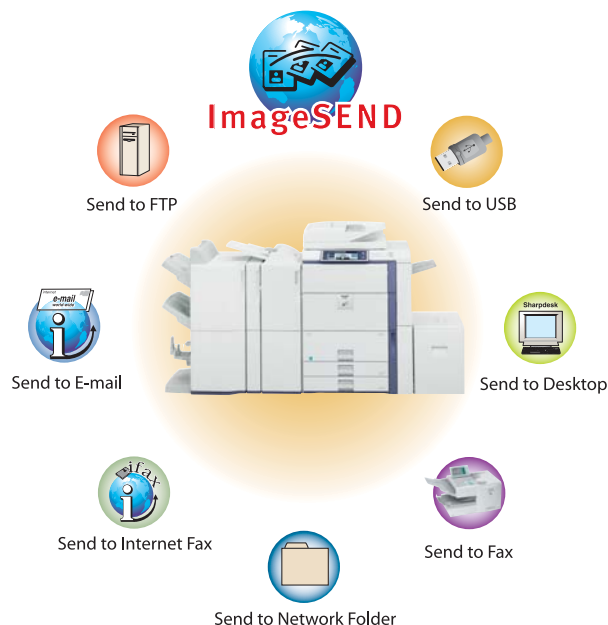
POWERFUL MULTI-TASKING

The new MX Series has all the power you need for high-volume environments. The **1 GHz multi-tasking controller** delivers plenty of muscle when you need it most...at crunch time. Most controllers perform one single operation at a time, so jobs build up in the queue, causing bottlenecks. In contrast, the MX-6201N/7001N Series continually processes incoming jobs even while existing jobs are output, increasing overall productivity.



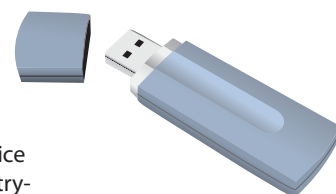
SCAN IT. SAVE IT. SEND IT.

It really is that simple with Sharp **ImageSEND technology**. With up to seven destinations—E-mail, Desktop, FTP, Network Folder (SMB), USB, Fax and Internet Fax—getting your document where it needs to go is as easy as pushing a button. There's no need to walk to different peripherals to get the job done, simply scan your document, select the destination and hit start. The **Send to Group*** mode allows you to mix group broadcasts to E-mail, Fax, and Internet Fax...perfect for increasing efficiency in larger environments. ImageSEND technology centralizes the entire document distribution process, saving valuable time. And with recent postal increases, ImageSEND technology can significantly reduce mail costs as well.



INTEGRATED USB SUPPORT

Designed to support today's mobile workforce, the MX-6201N/7001N Series is USB compatible and works with a variety of popular memory devices. Scan files directly to a USB device or simply plug-in and print. Most industry-standard protocols are supported, including TIFF, JPEG, PDF, and Encrypted PDF.*



SECURITY AT YOUR FINGERTIPS

To help reduce security breaches in today's marketplace the MX-6201N/7001N Series supports **LDAP** with integrated **User Authentication**. Ideal for larger environments, administrators can manage access to users and features, resulting in complete control over the MFP usage and costs. With PIN-code authorization and controls for up to three levels of identification, you can help protect sensitive documents —so your data is not compromised.

CONVENIENT DISTRIBUTION WITH LDAP

With LDAP, there's no need to manually enter a recipient's complete address or phone number. Simply enter the first few characters and the MX-6201N/7001N Series automatically searches and displays a list of names to select from. And with **Unique File Naming**, you can enter specific filenames with custom subject fields, so it's easier than ever to recall files when you need them.

SUPER-FAST, SUPER G3 FAXING

Centralize communications and reduce peripherals by adding the optional **Super G3 Fax Kit**. Designed for busy workgroups, the MX-6201N/7001N Series delivers lightning-fast walk-up faxing, as well as the convenience of **PC Faxing** directly from your desktop. With an optional Finisher installed, faxes are automatically stapled and/or collated, so they're ready to distribute. Innovative **Inbound Fax Routing** sends faxes directly to an e-mail address, giving mobile users the ability to check on incoming orders, purchase orders, and more. Parameters can be easily managed through the user-friendly web page. And for additional savings, the optional B&W Internet Fax expansion kit can help reduce long-distance phone costs.



INTEGRATED, USER-FRIENDLY SOFTWARE HELPS YOU MANAGE DOCUMENT WORKFLOW

In contrast to the MX-6201N/7001N Series' robust functionality, the systems are incredibly intuitive and easy to use. To enhance your investment, Sharp's Administration Utility Suite provides integrated tools and utilities to simplify usage and set-up. This collection of tools delivers everything you need to streamline processes in sophisticated network environments.

EASY MANAGEMENT WITH THE MX SERIES WEB PAGE

Integrated web-based management makes it easy to customize scan destinations, profiles, web links, and fax distribution features right from your desktop. Sharp's easy-to-use **Web Page** also provides access to **My Sharp**, a dedicated website that provides support and training tools to help you maximize the features of your MX-6201N/7001N Series.



SIMPLIFY NETWORK TASKS WITH PRINTER ADMINISTRATION UTILITY (PAU)

Designed for administrators, PAU provides a "snapshot" of activity of all devices on your network, enabling you to monitor status from one single interface. Easily install updates to different devices remotely, distribute drivers and set print priorities to expedite workflow.

VIEW DEVICES REMOTELY WITH PRINTER STATUS MONITOR

Designed for both managers and desktop users, Printer Status Monitor allows you to check the status of each printer on the network. Check paper levels, toner and more...all through a user-friendly interface.

OPTIMIZE SCANNED FILES WITH SHARPPDESK™ SOFTWARE

With Sharpdesk document management software, you can easily integrate scanned documents into your everyday workflow. Organize, edit, enhance—even combine several scanned files from different applications into one document. Intuitive search functionality enables users to retrieve documents quickly and easily.

ENHANCE PRODUCTIVITY WITH REMOTE E-MAIL DIAGNOSTICS

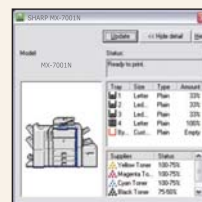
Managers can stay on top of device productivity with remote E-mail Diagnostics. Administrators automatically receive meter reads and other diagnostic information critical to maximizing uptime.



Embedded Web Page



Printer Administration Utility



Printer Status Monitor



Sharpdesk Software

OPTIONAL EFI™ FIERY® CONTROLLER



FEATURE-RICH PERFORMANCE FOR GRAPHIC-INTENSIVE WORKGROUPS

THE OPTIONAL EFI FIERY CONTROLLER AND GRAPHIC ARTS PACKAGE

Best-in-class functionality combined with high-quality, on-demand color make the MX-6201N/7001N Series the perfect compliment to design firms, central reprographic departments, pre-press



professionals and related marketing services organizations. Configured with the optional EFI Fiery Controller, the MX-6201N/7001N Series delivers state-of-the-art color control and software enhancements that streamline workflow and make it easier to predict color output. Packed with a sophisticated set of

tools and a blazing-fast **2.0 GHz processor**, the powerful EFI Fiery Controller accelerates memory-intensive processing, minimizing document traffic and bottlenecks. Effortless to control and virtually seamless to users, the EFI Fiery option delivers consistent, precise output for the most demanding applications—yours.



The EFI Fiery interface features a simplified tabbed structure that is easy for both occasional users as well as the most demanding operators.

USER-FRIENDLY SOFTWARE

The EFI Fiery driver provides **efficient and organized access** to print functions and settings through an intuitive and familiar interface. Pop-up menus display sub-menu choices in an easy-to-navigate tabbed format. Integrated features like **Drag-and-Drop Watermark, Job Monitor** and **Booklet Maker** help you produce complex jobs without the purchase of third-party software, so you can handle the most sophisticated projects with the ease of a pro.



SEAMLESS INTEGRATION WITH YOUR INFRASTRUCTURE

Designed to connect seamlessly within your existing network environment, the EFI Fiery controller provides an intuitive and flexible platform to **manage the entire document printing process from a single interface**. All standard network protocols are supported, simplifying installation and deployment. You also get advanced security features to manage various levels of user access. With **IP filtering, Port Blocking, Secure Erase** options and more, the EFI Fiery Controller delivers all the features you need to remain compliant in today's changing business landscape. And with **Fiery WebTools™**, users can access scanned files, jobs and devices through a single web page.

FIERY CONTROLLER ACCESSORIES

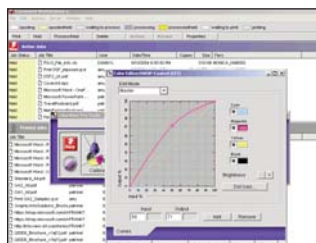
- EFI Desktop Pro® Software
- EFI Graphics Arts Package Software (Includes Spot-On®, EFI Hot Folders/Virtual Printers, and Auto Trapping)
- EFI Impose™ Fiery Edition
- EFI Color Profiler
- PrintShop Mail-Fiery® Edition
- PageFlex Persona-Fiery® Edition
- EFI Secure Erase

EXPEDITE WORKFLOW WITH VERSATILE EFI SOFTWARE

COLORWISE® SOFTWARE

In production-oriented environments, EFI Fiery ColorWise software provides accurate, consistent color, regardless of platform, application or media. Automatic, in-RIP processing spools jobs to the controller, **resulting in improved workflow.**

Parameters are easy to set and save, so even casual users can use the software confidently. Pre-set profiles can be applied to individual jobs, resulting in more consistent color quality.



COLOR PROFILER (OPTIONAL)

The optional Fiery Controller makes it easy to match and save data that ensures that colors print consistently on virtually any device in the organization. Sophisticated tools can generate printer profiles for every printer on your network, **drastically reducing the time spent making color adjustments.**

The Color Profiler kit also **provides more realistic color** on CRT and LCD monitors, so you can better predict that the color you see will match the color on printed documents.

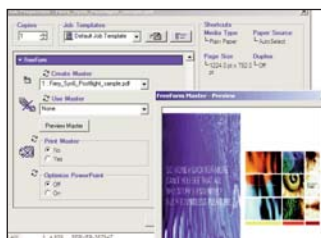


COMMAND WORKSTATION™ SOFTWARE AND WEBTOOLS

Simplify centralized print management in large-scale enterprises. With extensive features, administrators can monitor devices, or add, delete and prioritize jobs to optimize workflow in busy workgroups. With WebTools administrators and users can **remotely access features** via the Internet to better manage jobs for greater efficiency.

FREEFORM™ SOFTWARE

Take advantage of one-to-one marketing opportunities with **FreeForm**. Now you can get variable data printing options in a scalable, easy-to-use interface. The industry's leading variable data printing solution, FreeForm works from almost any application and integrates seamlessly with most variable data applications, providing a cohesive workflow with improved productivity.

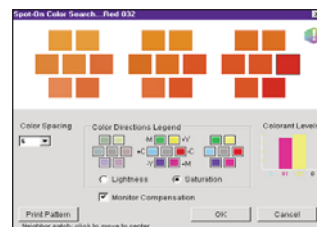


HOT FOLDERS/VIRTUAL PRINTERS (OPTIONAL)

For faster, error-free printing, the optional Hot Folders utility can **reduce set-up errors** by automating sophisticated tasks. Now users can easily perform beyond their level of expertise, making it easy to keep up with demand in busy workgroups.

SPOT-ON® COLOR SOFTWARE (OPTIONAL)

Perfect for pre-press environments, this handy utility helps operators edit CMYK/RGB values with easy-to-use calibration tools, so the color matches the printed output.



THE MX-6201N/7001N
DOCUMENT SYSTEMS:
BUILT-IN COLOR FOR
DEMANDING ENVIRONMENTS



MX-6201N/MX-7001N SPECIFICATIONS

Main Specifications

Base Models	High-speed color multifunction digital document system; 1 GHz multi-tasking controller; 80 GB HDD with document filing; PCL5c/PCL6 network printing/scanning; Scan2 single-pass duplexing feeder, auto duplex, 3,100-sheet standard paper capacity
Functions	Copy, print, network print, network scan, document filing; Super G3 fax option
Copy System	Laser, Dry Transfer, Organic Photo Conductor Ultra-Fine Toners/Developers, Magnetic & Heat Process
Copy Size	Input: Min. 5 1/2" x 8 1/2"; Max. 11" x 17" Output: Envelopes, Letter, Letter-R, Legal, Ledger & 12" x 18"
Copy Speed	MX-6201N: 62 PPM B/W & 50 PPM Color MX-7001N: 70 PPM B/W & 50 PPM Color (based on 8 1/2"x11" paper)
First Copy Time	Platen glass: 4.5 seconds B&W and 7.2 seconds Color (MX-6201N) 4.0 seconds B&W and 7.2 seconds Color (MX-7001N)
Warm Up Time	Approximately 300 Seconds
Copy Data	25% to 400% Zoom (1% increments), 25% to 200% (DSPF); 9 R/E presets; 999 Continuous Copy
Scanning	Up to 65 pages/minute with 2-sided B/W originals at standard resolution (includes Fax & Internet-Fax) Up to 35 pages/minute with Color Copy or Scan originals at standard resolution
Original Feeder	Duplex Single Pass; 150-sheet capacity (using 20 lb. bond) Sizes: 5 1/2" x 8 1/2", 8 1/2" x 11", 8 1/2" x 11" R, 8 1/2" x 14", 11" x 17" (13-34 lb. bond)
Paper Feed	Standard: 2,000-sheet drawer (letter) and two adjustable 500-sheet drawers (letter, legal, 12" x 18", ledger, statement size) weights up to 110 lb. index, 100-sheet bypass tray. Optional: 3,500-sheet large capacity tray (letter) or 3,000-sheet large capacity tray (letter, legal, ledger or 12" x 18" paper)
Paper Types	Paper drawers: 1 & 2: 16-28 lb. bond paper Paper drawers: 3 & 4: 16 lb. bond—110 lb. index paper Other paper types include plain, pre-printed, recycled, pre-punched, letterhead and color paper.
Bypass Tray	Capacity: 100 sheets (letter, legal, ledger, statement, 12" x 18" & envelope size) Categories: Plain paper (16-28 lb. bond 60-105 GSM), Heavy paper (28-68 lb. Bond / 140 Index / 106-256 GSM) Envelope (20-24 lb. bond / Monarch / Com-10), Tab paper (letter only). Other types include label stock, gloss paper, pre-printed, recycled, pre-punched, letterhead, color, and OHP film.
Output Tray	Main output tray (top) 250 sheets (face down)(option); Standard: Right-side tray 100 sheets (face down)
Duplexing	Standard automatic duplex copying and printing of up to 110 Index
Interface	Ethernet (10/100BaseT), USB 2.0 (host port), USB 2.0 (device port)
Memory	Standard 1.28 GB (copier memory) 1 GB (printer/network scanning) memory
Hard Disk	80 GB HDD; Document Filing: 40 GB • Main/Custom: Up to 4,200 pages or 3,000 files • Quick Folders: Up to 1,400 pages or 1,000 files
Resolution	Scan: monochrome / color: Max 600 DPI; Copy Output (B&W / Color): Max 600 DPI
Halftone	Equivalent to 256 gradations/2 levels (mono)
Color modes	Auto Color Selection, Full Color, B/W, Dual & Single Color Modes
Copy Features	Scan-once Print-many (Electronic Sorting), Offset-stacking, Auto Color Selection (ACS), Auto Paper Selection (APS), Auto Magnification Selection (AMS), Auto Tray Switching, Rotation Copy, Job Reservation, Tandem Copy, Book Copy, Margin Shift, Tab-paper Insertion, Edge Erase, Center Erase, Dual-page Copy, Cover Pages, Insert Pages, OHP Insertion, Job Build, Card Shot, Mirror Image, B/W Reversal, Centering, Proof Copy, 2-in-1, 4-in-1, Pamphlet, Photo Repeat, Multi-page Enlargement, Document Filing, Account Management, Job Programs, Stamp Mode (Date / Text / Page B&W / Color) ¹
Accounts	Up to 1,000 users. Supports user-number authentication (on device), login name/password (on device) or login name/password (on device via LDAP or other servers)
Firmware	Flash ROM update via USB and/or network
Power Source	AC 100-127 VAC, 60 Hz, 20 Amps
Power Consumption	Approx. Max: 1.92kw; Low Power: 288.7w (MX-6201N); 319.5w (MX-7001N); Sleep Mode: 95w
Weight	Approximately 461 lbs.
Dimensions	31-19/64"(w) x 28-9/64" (d) x 48-7/32" (h)

¹ Some features require optional equipment

² 1,200 DPI and Postscript Printing requires optional PS3 Expansion Kit

³ Actual transmission time will vary based on line conditions. Based on Sharp Standard Test Chart with approximately 700 characters, letter size in standard resolution

⁴ Option not available at time of launch

Network Printing System (standard)

Emulation	PCL6 / PCL5c compatible, optional PS3
Resolution	1,200 dpi (monochrome), 600 DPI, 300 DPI ²
OS Support	Windows® 98, Windows Me, Windows XP, Windows NT®4 (SP5 or later), Windows 2000, Windows Server® 2003, Windows Vista™, Unix®, Novell® NetWare® 3.x/4.x/5.x, MAC OS® 9.x, MAC® OS X
Software Features	Print drivers, Printer Status Monitor and Printer Administration Utility Continuous, Duplex, Pamphlet, N-up, Image Rotation, Different Cover Page/Last Page, Transparency Inserts, Tabs, Carbon-copy Print, Fit-to-page, Poster, Margin Shift, Mirror Image, Watermarks, Overlay, Confidential, Confidential Batch, Release from Hold, Proof, Bypass, Job Priority, Job Control, Tandem and Direct printing (Note: some features not available on all print drivers) ¹
Direct Printing	File Types: TIFF, JPEG, PCL, TXT, PDF, Encrypted PDF, and PostScript® ² Methods: FTP, Web page, E-mail and USB memory
Interface	Ethernet; 10/100 BaseT; USB 2.0
Network Protocols	TCP/IP, IPv6, IPsec, SSL, SMTP, FTP, SMB, IPX/SPX, and AppleTalk® for Macintosh® environments
Print Protocols	LPR, IPP, PAP, Raw TCP (port 9100), FTP, Novell® Pserver/Rprinter
Print Drivers	Windows 98, Windows Me, Windows NT4.0 (SP5 or later), Windows 2000, Windows XP, Windows Server 2003, Windows Vista, MAC PPD (optional), MAC OS9, MAC OS X
Security	SSL, IPP, IP/MAC address filtering, protocol filtering, port management and user authentication with account control

Network Scanning System (standard)

Scan Output	Resolution: 600, 400, 300, 200 or 100 DPI
Image Formats	Monochrome: TIFF, PDF, Encrypted PDF Color / Grayscale: TIFF, JPG, PDF, Encrypted PDF Internet Fax (options): TIFF-FX, TIFF-E, TIFF-S
Compression	Mono: Uncompressed, G3 (MH), G4(MR/MMR) Color / Grayscale: JPEG (high, middle, low) Internet Fax: MH/MMR (option)
Destinations	E-mail, Desktop, FTP, Folder (SMB), USB memory, Internet fax (option), Super G3 fax (option)
One-Touch	Up to 999 destinations (combined with scan destinations) and up to 500 Groups
Programs	48 total
Scanning Protocols	TCP/IP (includes SMTP, LDAP; FTP, SMB, SMTPS, POP3S, FTPS)
Security	SSL, user authentication with account control, comprehensive access control, e-mail Audit control and Document Administration.
Configuration Method	Web-based management; user/administrator level login security with 32 alpha-numeric characters
Software	Sharpdesk desktop document management software (1 user license) with secure FTPS support

B&W Super G3 Fax Kit (option)

Transmission Data	Super G3, G3 (33.6 KBPS) with JBIG, MMR, MR or MH Compression by sheets fed simplex, duplex or off the glass; Max 400 DPI (ultra-fine) at approximately 2 seconds; JBIG ³
Auto Dialing	Up to 999 destinations (combined with scan destinations) and up to 500 Groups
Inbound Routing	Forwards received fax data to E-mail
Originals	Up to 31.5" (for transmission)
Programs	48 (combined)
Memory	8 MB (exclusive)
Features	Quick on-line transmission, direct transmission, F-Code transmission/reception, rotate transmission, anti-junk fax reception, automatically staple received faxes, secure fax release, out of paper memory reception, auto redial, 2-in-1 transmission, duplex reception transaction reports, activity reports and PC fax ⁴
Security	Secure fax release, junk fax filter and separation between fax lines and network ports

3-Position Finisher (option)

Type	Console finisher with dual exit trays
Output Capacity	Upper Tray: 1,550 sheets (letter size, non-stapled) Lower Tray: 2,450 sheets (letter size, non-stapled)
Staple Positions	1-point front, 1-point back or 2-point stitching
Output Data for stapling	Face down; 50 sheets (letter) or 30 sheets (mixed sizes) 20 lb. Bond; Maximum: 48 sheets (20 lb. Bond) + 2 covers (140 lb. Index)

Saddle-Stitch Finisher (option)

Type	Console finisher with dual exit trays (mounts on left side of host machine)
Output Trays	Upper/Lower Tray: Offset Stack; Saddle Tray: Saddle Stitch Tray
Output Capacity	Upper Tray: 1,550 sheets Lower Tray: 2,450 sheets (letter size-non stapled)
Output Data for Stapling	Face down, 50 sheets (Letter size - 20 lb. Bond); Face down, 30 sheets (Mixed types/sizes of the same width - 20 lb. Bond); Max: 48 sheets 20 lb. Bond with 2 covers (140 lb. Index)
Saddle-Stitch	Up to 15 sheets (20 lb. Bond); Up to 14 sheets (20 lb. Bond) plus one page of 140 lb. Index; Max Sets - 25 bundles (1-5 sheets), 20 bundles (6-10 sheets), 10 bundles (11-15 sheets)

Paper Pass Unit (option)

Type	Installed into main unit (required for all output options)
-------------	--

Large Capacity Tray (option 1)

Type	Large capacity Ledger tray
Paper Size	Letter, Letter-R, Legal, Ledger or 12" x 18"
Capacity	3,000 sheets
Paper Types	Plain paper, pre-printed, recycled, letterhead, pre-punched and colored paper up to 110 lb. index

Large Capacity Tray (option 2)

Type	Large capacity Letter tray
Paper Size	Letter size
Capacity	3,500 sheets
Paper Types	Plain paper, pre-printed, recycled, letterhead, pre-punched and colored paper up to 110 lb. index

Punch Unit (option)

Type	Floor style module
Ability	3-hole (portrait), 2-hole (short edge)
Dimensions	4-9/16" (w) x 23-5/8" (d) x 39-3/16" (h)
Weight	Approximately 17.6 lbs.

Insertor Unit (option)

Type	Floor style module
Capacity	100 sheets (20 lb. Bond)
Dimensions	17-15/16" (w) x 23-7/16" (d) x 41-11/32" (h)
Weight	Approximately 50.7 lbs.

Optional Equipment List

MX-LCX2	Large Capacity Letter Tray
MX-LCX3	Large Capacity Ledger Tray
MX-FNX3	Finisher (three-position stapling, 4,000-sheet stacking)
MX-FNX4	Saddle-stitch Finisher (three-position stapling, saddle-stapled, 4,000-sheet stacking)
MX-PNX2B	Hole Punch Unit (requires MX-FNX3 or MX-FNX4)
MX-PEX2	Fiery Controller (includes PostScript 3)
MX-RBX2	Paper Pass Unit (required for MX-FNX3, MX-FNX4)
MX-CFX1	Insertor (requires MX-FNX4 or MX-FNX3 + MX-PNX2B)
MX-PXK1	PostScript 3 Kit
MX-FWX1	Internet Fax Expansion Kit
MX-FXK1	Facsimile Expansion Kit
MX-AMX1	Application Integration Module ¹
MX-AMX2	Application Communication Module ¹
MX-AMX3	External Accounting Module ¹
MX-FRX9U	Data Security Kit ⁴
AR-PF1	Bar Code Font
MX-USX5	Sharpdesk - 5 User License Kit

Supplies

MX-71NTBA	Black Toner Cartridge
MX-70NTCA	Cyan Toner Cartridge
MX-70NTMA	Magenta Toner Cartridge
MX-70NTYA	Yellow Toner Cartridge
MX-71NVBA	Black Developer
MX-71NVSA	Cyan/Magenta/Yellow Developer
MX-70NRBA	Black OPC Drum
MX-27NRSA	OPC Drum for Cyan/Magenta/Yellow



SHARP®