

# EPSON® PowerLite® 735c Multimedia Projector

## User's Guide Supplement

*Installing and Setting Up Wireless Projecting for Macintosh*

*Using EMP NS Connect for Wireless Projecting*

*Using Projector Groups*

*Using E-Mail Alerts*

*Projecting Movies Through EasyMP*

EPSON is a registered trademark and EasyMP is a trademark of SEIKO EPSON CORPORATION.

PowerLite is a registered trademark of Epson America, Inc.

General Notice: Other product names used herein are for identification purposes only and may be trademarks of their respective owners. EPSON disclaims any and all rights in those marks.

Copyright © 2003 by Epson America, Inc.

11/03

## *Introduction*

Your EPSON PowerLite 735c projector includes new features for Macintosh® and Windows® user that are not covered in the *User's Guide*. The following features are now available:

- Presenting through a wireless network from a Macintosh
- A new version of NS Connection (for Windows and Macintosh) that supports improved performance in wireless presenting, including the ability to connect to four projectors at once
- Support for SXGA+ and UXGA video modes
- E-mail notification through the wired or wireless connection when an error occurs on the projector
- The ability to play MPEG2 movies and view PNG files from a memory card in the projector

This booklet provides instructions for using the new features.

## *Installing and Setting Up Wireless Projecting for Macintosh*

The EMP NS Connection software is now available for Macintosh. This allows you to project wirelessly from Apple® Macintosh systems equipped with an 802.11b wireless network interface.

### **System Requirements**

Before you install the software, make sure your Macintosh meets the following requirements:

- Power Macintosh® series, iMac®, PowerBook®, or iBook® series system, running Mac OS X 10.2.4 or above
- 802.11b wireless network interface (AirPort)
- At least 256MB of RAM
- At least 128MB of free hard disk space
- SVGA (800 × 600) or better display adapter and monitor

### **note**

*If you want to monitor the projector using HP OpenView™, you can request an SNMP management plug-in from EPSON.*

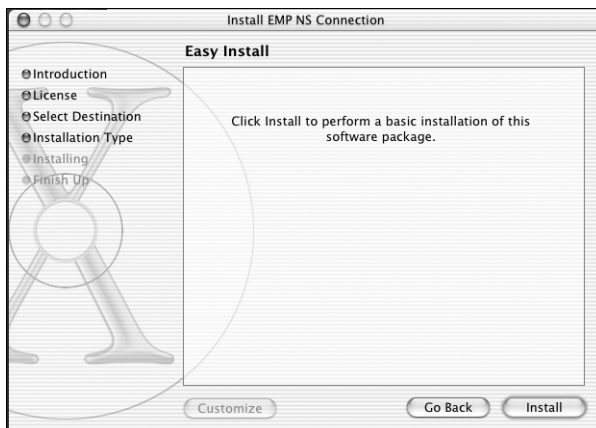
## ***Installing the Software***

Follow these steps:

1. Insert the EasyMP software CD-ROM in your drive. You see a window containing the EMP NS Connection.pkg icon.
2. Double-click the EMP NS Connection.pkg icon.



3. Click **Continue**. You see the software license agreement.
4. Click **Continue**, then **Agree**.
5. Select the destination drive, then click **Continue**. You see the following install window:



6. Click **Install**. When installation is complete, close the window.

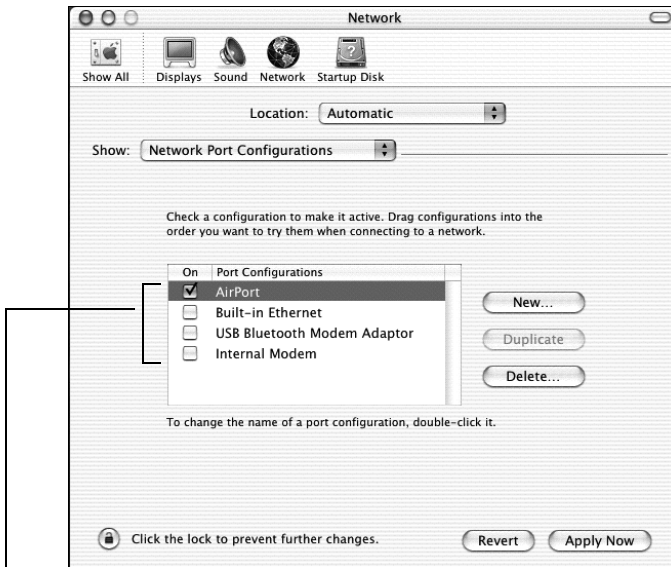
## Configuring Your Network Connection

Follow the instructions in your Projector *User's Guide* to start EasyMP and insert the EPSON 802.11b card in the projector.

Determine whether you will use Ad Hoc mode or Access Point mode to connect to the projector. Follow the instructions in your Projector *User's Guide* to configure the projector for the mode you will be using. Then follow the instructions beginning on page 5 to set up your Macintosh in either Ad Hoc mode or Access Point mode.

Before you can connect to the projector, you need to make sure the network settings on your Macintosh match the settings on the projector.

1. From the Apple pull-down menu, select **System Preferences**. Then double-click the **Network** icon. You see the Network Settings window:



Check the port you want to use

2. Under **Port Configurations**, select **AirPort** for a wireless network or **Built-in Ethernet** for a wired network.
3. Click **Apply Now**. Then close the window.

---

### **note**

*EMP NS Connection does not support Macintosh Channel Ad Hoc mode.*

---

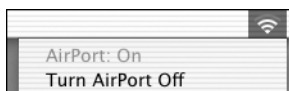
---

### **note**

*Make sure that only one port is selected.*

---

- For optimal performance, set your screen resolution to 1024 × 768 or lower with a color depth of Thousands (16 bit).
  - When making Location settings, you can select the desired location and change all the network settings one at a time.
4. Make sure the following is displayed in the communication status bar in the top right corner of the screen:



- If the projector has been assigned an **ESSID** name, click the communication status icon and select the projector's **ESSID** name from the menu.
- If you are using the wired LAN Connection mode, click **Turn AirPort Off**.

## *Using EMP NS Connect for Wireless Projecting*

Your projector now includes version 1.20 of EMP NS Connection for Windows (equivalent to version 1.0 for Macintosh). If you are using a Macintosh, the screens will look different from those shown in this section, but the same features are available.

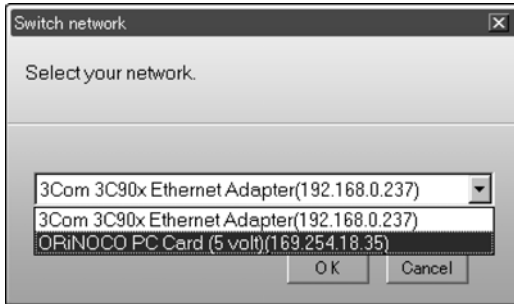
### **note**

*If you see a message during installation that the EPSON GDI Monitor Driver has not passed Windows Logo testing, click Continue Anyway.*

Follow the instructions in your Projector *User's Guide* to install the software, start EasyMP, and set up your projector and computer in either Ad Hoc mode (computer to computer) or Access Point mode. Then follow these steps:

1. Make sure you've installed your wireless 802.11b card. Then do one of the following:
  - Windows: select **EMP NS Connection** from the Start menu.
  - Macintosh: double-click the **EMP NS Connection** icon in your Applications folder.

The first time you start NS Connection in Windows, you see a window asking you to select your network.



---

**note**

*If you don't see your network adapter's IP address, allow a minute for it to appear. If your access point uses DHCP, sometimes it takes a minute for the server to pick up the IP address.*

---

2. Select the IP address for your computer's network adapter card and click OK.

You see the screen below. (If you have previously started NS Connection, or you're using a Macintosh, this is the first screen you see.)



Select projector

This box indicates projector status

---

**note**

*If you don't see the Switch network window and you want to change to a different network adapter, click the Extension button. In Windows, click Switch LAN. On Macintosh, click Set up network.*

---

If the connection is working properly, you see your projector listed. If you have additional EPSON projectors on the network, they are also listed, along with their status.

---

**note**

*The status icon colors may be easier to see on the projected image than on the computer.*

---

The color of the status icon indicates the projector's status:

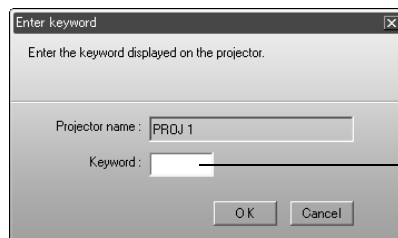
- Gray: the projector is not connected
- Red: the projector is connected to another computer
- Green: the projector is connected to your computer.

3. If you don't see your projector, check the following:
  - Make sure your wireless signal is strong enough to establish a connection (see your computer documentation for details).
  - Make sure your computer's SSID matches the ESSID you assigned to the projector (for example, **CONF ROOM**). Remember that both the SSID and ESSID are case-sensitive.
  - If you are using Access Point mode, make sure the projector and your computer are on the same subnet.
  - Make sure the projector and your computer are communicating on the same channel.
  - Restart your computer and start NS Connection again.
  - If you still don't see your projector and you are using Access Point mode, follow the instructions in "Connecting in IP Connect Mode" on page 11 to connect to the projector.

4. Once the name of your projector appears, select it and click **Connect**. If more than one projector is listed, you can select up to four projectors and connect to them at the same time.

If the selected projector is already being used by another person, you can still connect to it; however, doing so automatically disconnects the other user.

If you set up the projector to prompt you for a keyword before connecting, you see this screen:



Enter keyword




5. Type in the four-digit number displayed on the EasyMP Network screen and click OK.

Once the connection is established, you see your computer's image transmitted to the projector, and a floating control bar:



6. If necessary, drag the control bar out of the way, or minimize it.
7. When done with your presentation, click **Disconnect** on the control bar.


## ***Using the Control Bar***

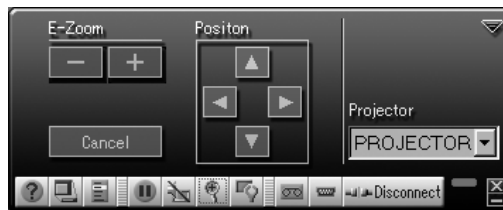
Clicking one of the buttons on the control bar may cause a submenu to appear above the control bar. For example, clicking the  button displays the following submenu:



If you are using more than one projector, you can use the **Projector** drop-down menu to select the projector to which you want to make any of the following changes:

- **Brightness**  
Increase or decrease brightness
- **Keystone**  
Click + to narrow the top edge of the screen, or - to narrow the bottom edge (this option functions like the **Sync** buttons on the projector's control panel)
- **Contrast**  
Increase or decrease image contrast
- **Color Mode**  
Lets you select from five preset modes to adjust the color and brightness for specific environments: **sRGB** for computer displays (the default when projecting from a computer with analog video), **Meeting** for presentations in bright rooms, **Presentation** for presentations in dark rooms, **Theatre** for optimizing movie images (the default for video display), and **Game** for video games

Clicking the  button displays the following screen and allows you to modify the zoom magnification and position:



When you're done making changes, click the arrow in the upper right corner to close the menu.

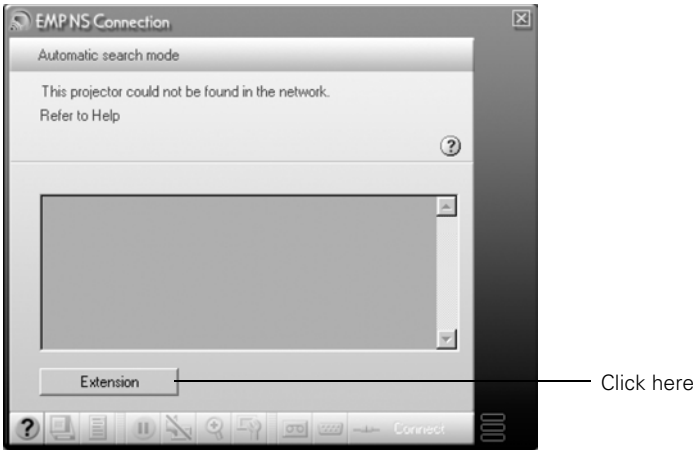
## ***Giving a Wireless Presentation***

When projecting a PowerPoint® presentation, you can use the **Page down** and **Page up** buttons on the remote control to move through your slideshow. This works the same way as when you connect your computer to the projector with the USB cable.

## Connecting in IP Connect Mode

Even if your projector and computer are on a different subnet (Access Point mode only) or connecting over different routers, you can establish a connection manually using IP Connect Mode.

1. Start NS Connection on the computer to which you want to connect. You see this screen:



---

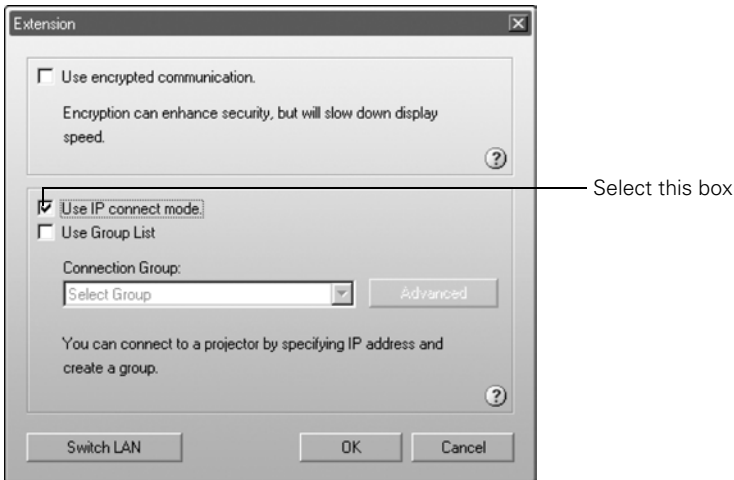
### **note**

*Depending on your network, your projector and computer may connect over different routers even if they are in the same room. Try this method if you are unable to connect automatically.*

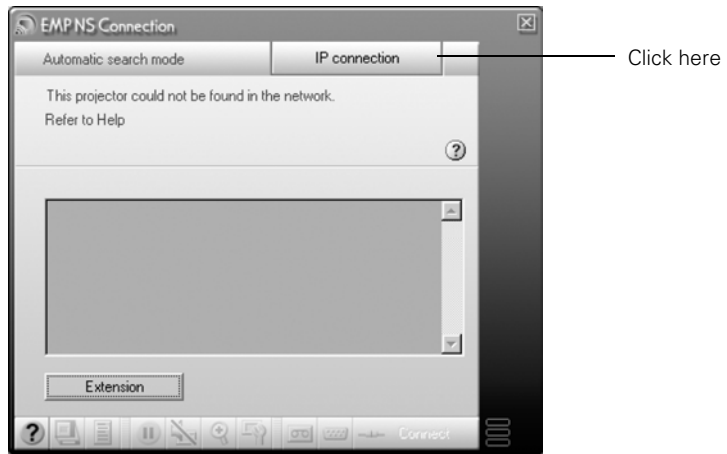
---

2. Click the Extension button.

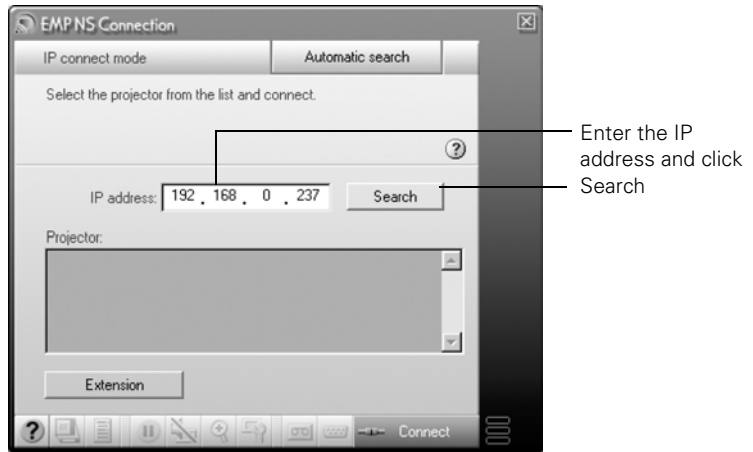
You see this screen:



3. Select **Use IP connect mode** and click **OK**. You see the following screen:



4. Click **IP connection**. You see this screen:



---

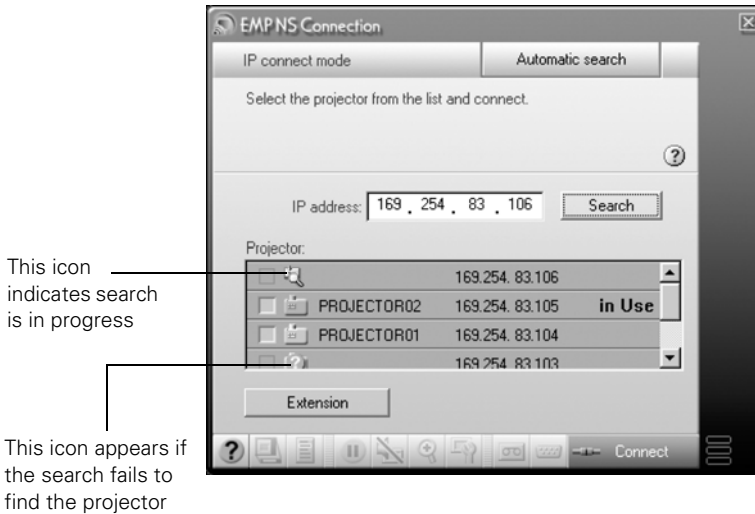
### **note**

*You can add up to 16 projectors to the list and connect to four projectors at the same time. If you add more, NS Connection begins to delete projectors from the list, starting with the first projector added.*

---

5. Enter the projector's IP address and click **Search**.

The IP address appears in the Projector list and a  searching icon displays:



If the search fails to find a projector with the specified IP address, the searching icon turns into a question mark. If this happens, run EasyMP to check the projector's IP address, then repeat this step.

6. Click the projector you want to connect to, then click the **Connect** button. If more than one projector is listed, you can select additional projectors and connect to them at the same time.
7. If you are prompted for a keyword, enter the four-digit number displayed on the EasyMP Network screen and click **OK**.

The computer's image is transmitted to the projector. See the Projector *User's Guide* and page 9 for details about using the floating control bar.

**tip**

Use a static IP address when configuring a projector for the network if you plan to use it in a group. If you use DHCP, the projector's IP address will change every time you turn it off and on again, and you will have to recreate the projector group.

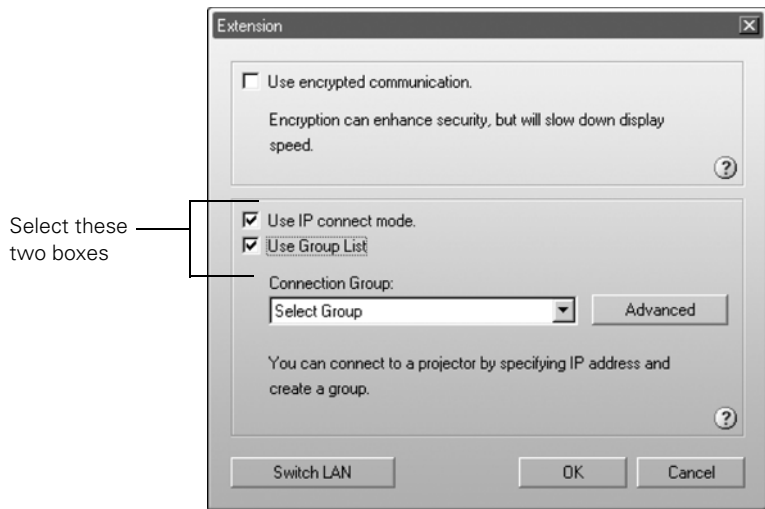
## Using Projector Groups

You can register projectors as a group if you want to provide quick and easy access to other computers. You can also export or import group information as a file to another computer. Projectors must be connected to the network in Access Point mode, and must be on the same network segment as the computer used to create the group, or the computers that import or export group information.

### Creating a Group

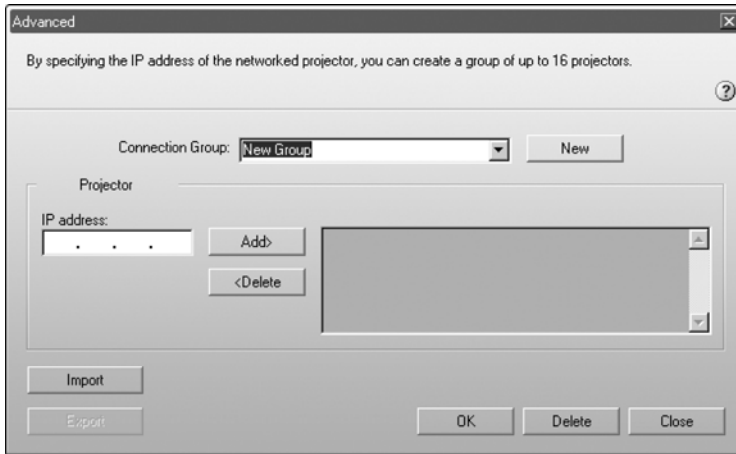
You can register up to 16 projectors as a group, and all projectors must be part of your wireless network.

1. Start NS Connection. Then click the **Extension** button on the EMP NS Connection screen. You see this screen:



2. Select **Use IP connect mode** and **Use Group List**.

3. Click the **Advanced** button. You see this screen:



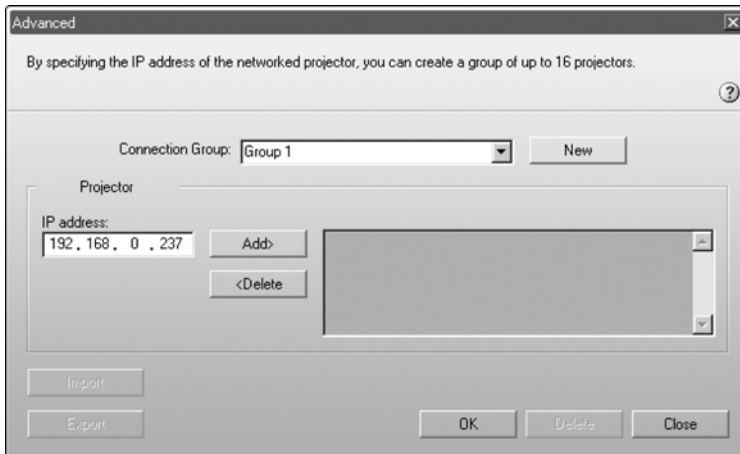
4. Enter a name for the group in the Connection Group box. Then enter the IP address of the projector you want to register in the IP address box:


---

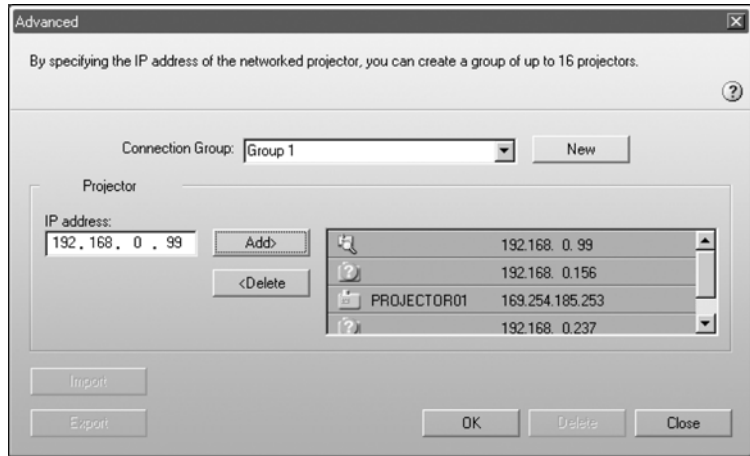
**note**

*You cannot use the addresses 0.0.0.0 or 255.255.255.255.*

---



5. Click **Add**. The IP address appears in the list of registered printers, and the  searching icon appears beside it. If the projector is found, its name appears in the projector list.



---

**note**

*To remove a projector from the group, select it from the projector list and click **Delete**.*

---

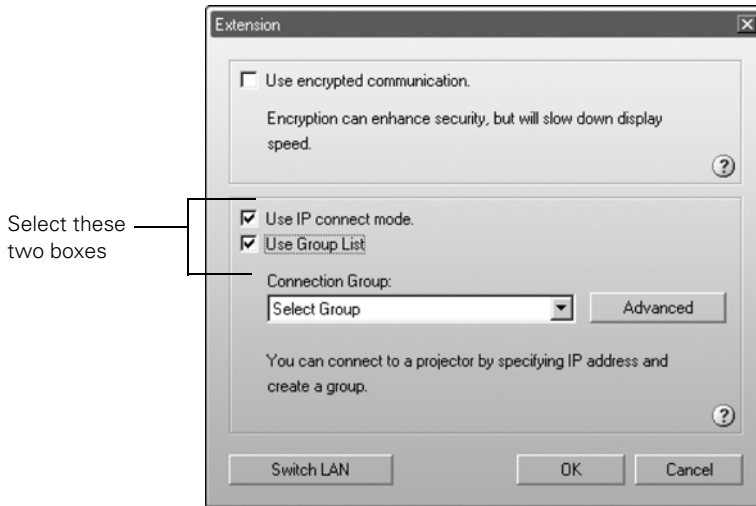
6. Repeat steps 4 and 5 for each projector you want to add to the group.
7. Click **OK** to save the projectors as a group. When you see a confirmation message, click **Yes**.
8. Click **Close** to close the Advanced screen.
9. Click **OK** to close the Extension screen, then close NS Connection.



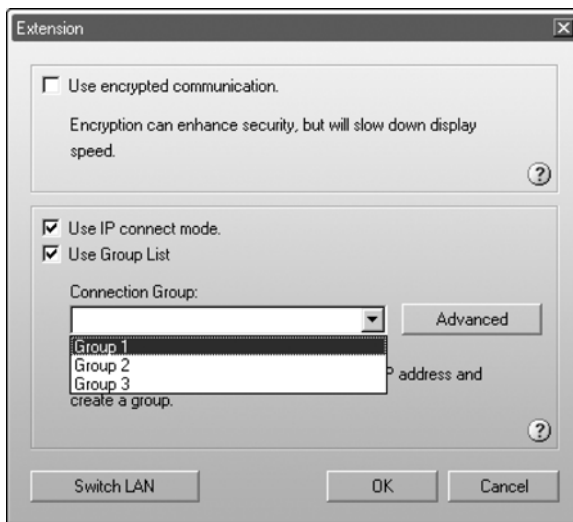
## Connecting to a Projector in a Group

Follow these steps to connect to a projector in a group:

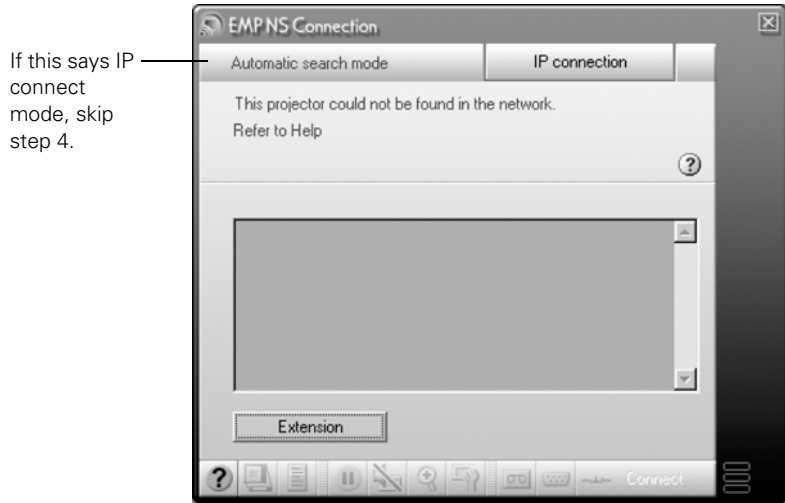
1. Start NS Connection. Then click the Extension button on the EMP NS Connection screen. You see this screen:



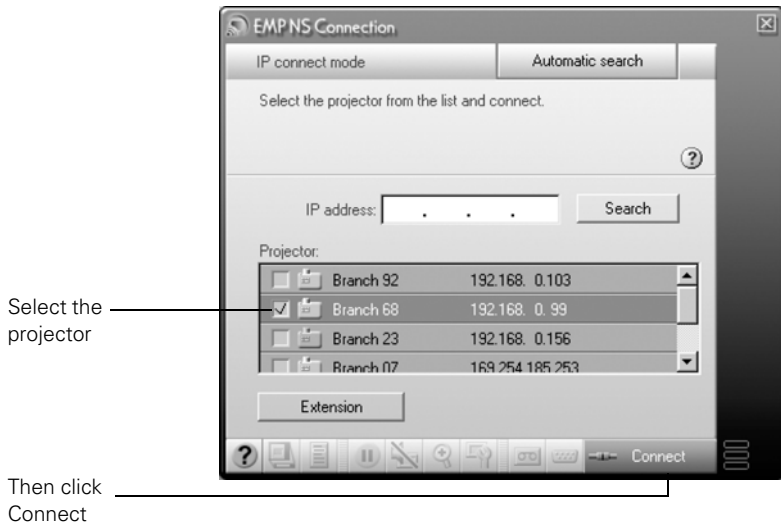
2. Select Use IP connect mode and Use Group List. You see the following screen:



- From the Connection Group list, choose the group you want to connect to and click OK. You see this screen:



- Click IP connection. (If the upper left button on the screen says IP connect mode rather than Automatic search mode, skip this step.) You see this screen:



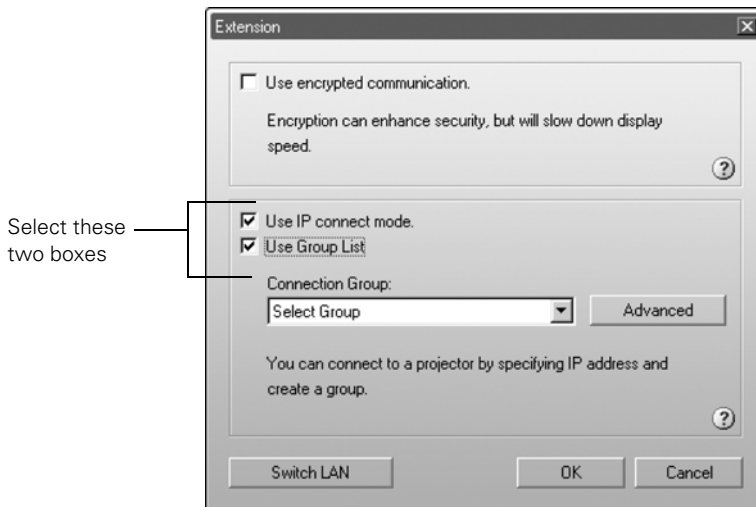
- Select the projector you want to connect to and click Connect.

6. If you want, repeat step 5 to connect to additional projectors. The computer's image appears on the projector screen.

## Exporting a Projector Group

You can export group information as a file to another computer on the wireless network. This is useful, for example, if you want to share group access with multiple users.

1. Start NS Connection. Then click the **Extension** button on the EMP NS Connection screen. You see this screen:



2. Select **Use IP connect mode** and **Use Group List**. Then click the **Advanced** button.

---

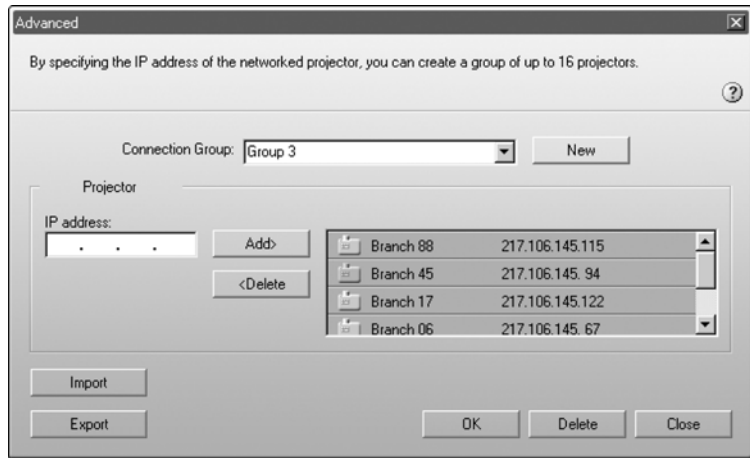
### note

*You must export all of the groups in the Connection Group list. You can't export individual groups.*

*Even if a projector is registered in a group, you don't have to use the group to connect to it. If your laptop is configured for your wireless network, you can connect to a projector as described on page 6.*

---

You see this screen.



---

**note**

*If you haven't created any groups, the **Export** button will be grayed out. You must create at least one group before the **Export** button is active.*

---

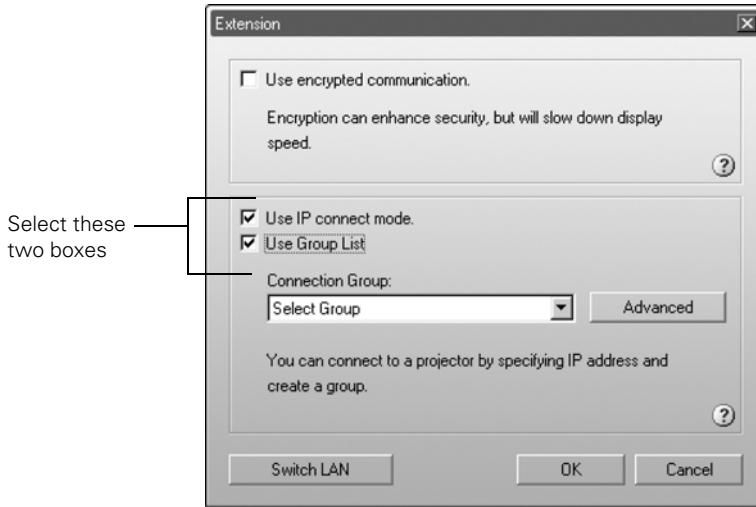
3. Click **Export** to export a file for all groups in the Connection Group list.
4. Highlight the file name (**NSGroup.ini**), and then select **Save to**. Choose a location on the second computer and click **Save**.

To connect to the projector from the new computer, follow the steps beginning on page 17.

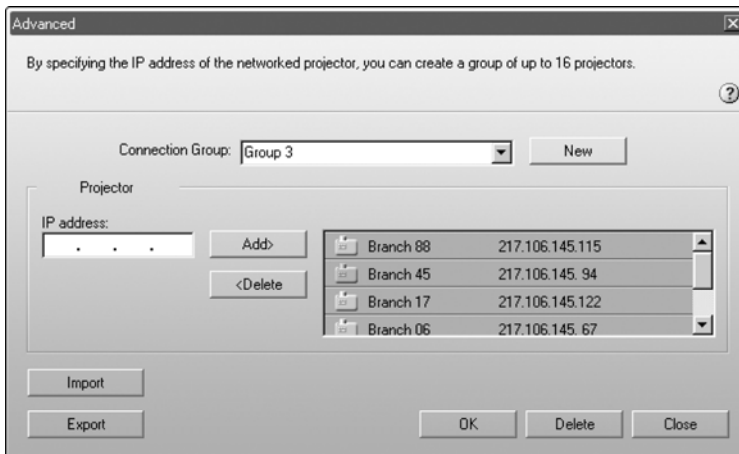
## Importing a Projector Group

You can also import group information as a file to another computer on the wireless network.

1. Start NS Connection. Then click the **Extension** button on the EMP NS Connection screen. You see this screen:



2. Select **Use IP connect mode** and **Use Group List**. Then click the **Advanced** button. You see this screen.



3. Click **Import**.

4. On the next screen, select the file you want to import and click **Open**.

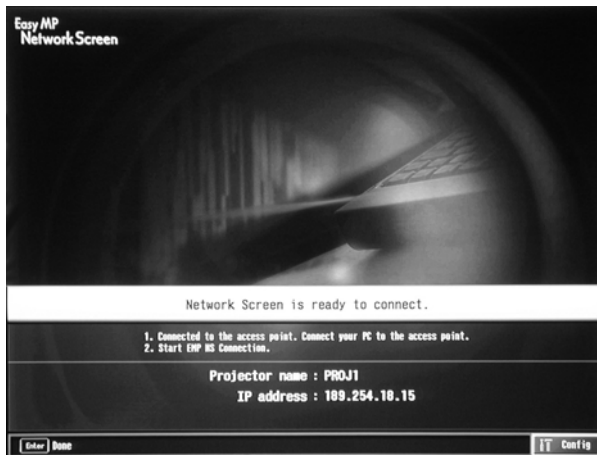
The names of all of the groups in the file are added to the Connection Group list on the Advanced screen.

To connect to the projector from the new computer, follow the steps beginning on page 17.

## *Using E-mail Alerts*

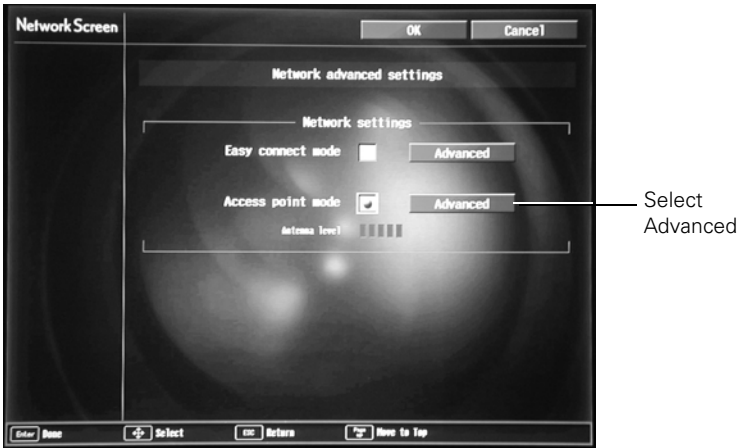
You can set up e-mail alerts to warn you of problems with the projector on either a wireless network or a wired LAN connection.

1. Do one of the following:
  - Insert the EPSON 802.11b wireless card and set up your projector to work in Access Point mode.
  - Insert your LAN card and configure your projector for a wired network.
2. Turn on your projector and remote control. Press the **EasyMP** button on the remote control to switch to EasyMP. You see the following screen:



3. Select **Config** in the lower right corner of the screen and press **Enter** on the remote control.

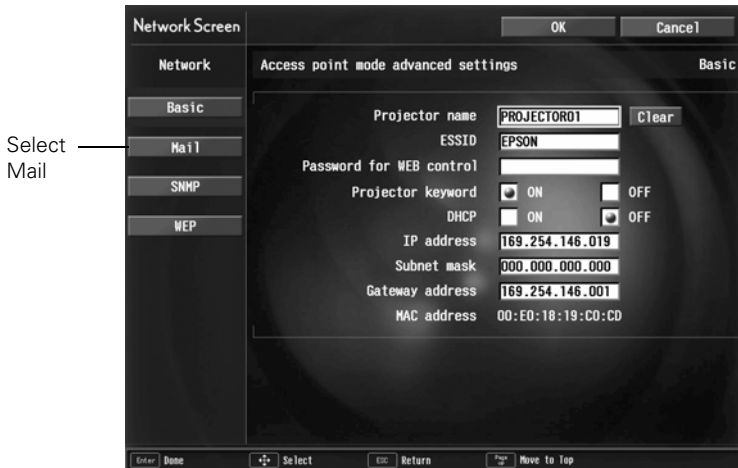
You see the following screen:



If you're connecting over a wired LAN network, go to step 5.

If you're connecting over a wireless network, continue with the next step.

4. Wireless network only: On the Network Screen, select the **Advanced** button next to the Access point mode box. Press **Enter** on the remote control.
5. When you see the screen below, select **Mail** and press **Enter**.



---

**note**

*The ESSID option is not displayed if you are connecting over a wired LAN network.*

---

You see the following screen:



6. For Mail Notification Settings, select ON and press Enter on the remote control.
7. Highlight the IP address of SMTP server box and press Enter. The outline of the box turns green to indicate you are in input mode. You can enter numbers between 0 and 255. However, you cannot use the following IP addresses: 255.255.255.255, 224.0.0.0, or 127.x.x.x (where x is a number between 0 and 255).
8. Highlight the Port Number box and press Enter. Then enter the SMTP server port number. The default value is 25, but you can enter numbers between 1 and 65535.
9. Highlight the box for Destination address 1 and press Enter. Enter the e-mail address for the first computer that you want to receive e-mail alerts. You can enter a maximum of 53 single-byte alphanumeric characters.
10. If you want to send e-mail alerts to one or two other computers, enter addresses for those computers in Destination address 2 and Destination address 3.
11. Select the conditions under which an e-mail alert will be sent.

### **note**

*Use the up and down buttons on the remote control to enter letters and numbers. You will also see punctuation marks, such as a period (.) and symbols, such as @. When you see the letter or symbol you want, press Enter. Then press the right arrow to move to the next position. To correct a mistake, press the left arrow to return to the previous position.*



12. When done making your settings, highlight the OK button at the top of the screen, then press **Enter**. Highlight the OK button again and press **Enter** to return to the main EasyMP Network Screen.

## ***Understanding the Notification Messages***

If a projector experiences a problem, it sends an e-mail message to each of the addresses you provided using EMP NetworkManager. The message includes the heading “EPSON Projector” in the subject line.

The body of the message contains:

- the name of the projector
- the projector’s IP address
- a description of the problem

The problem descriptions are similar to the errors reported by EMP Monitor:

- Internal problem
- Fan-related problem
- Sensor problem
- Lamp timer failure
- Lamp burned out
- Lamp cover open
- Overheating (projection turned off automatically)
- High-speed cooling in progress (the projector is getting too hot but continues to operate)
- Lamp replacement notification (the lamp is nearing the end of its life)

If a plus (+) sign appears before the description, it indicates that a problem has occurred. A minus (–) sign appears when the problem goes away or is resolved.

---

### ***note***

*If a projector develops a critical problem, it may not be possible for it to report the error.*

---

## *Projecting Movies Through EasyMP*

Your projector now includes version 1.11 of the SlideMaker2 software (for Windows only). This upgrade allows you to add movies in the MPEG2 format and PNG files to a scenario. You can also incorporate the following PowerPoint transitions:

- fly
- blinds
- box
- checkerboard
- peek
- random bars
- spiral
- split
- strips
- swivel
- wipe
- zoom
- crawl
- stretch
- dissolve

You can use the EasyMP CardPlayer program to play back MPEG2 movies. This works the same way as playing a slideshow or displaying an image file in the EasyMP CardPlayer program.

EasyMP supports MPEG2 movie files with the following specifications:

- Display size up to 720 x 480 pixels
- Bit rate up to 8Mbps
- MPEG1-Layer2 (MP2) audio

For more information, see Chapter 5 in your projector *User's Guide*.



CPD-17100R1  
Printed in XXX