

# Panasonic<sup>®</sup>

5.8 GHz Expandable Cordless Handset

## Operating Instructions

Model No. **KX-TGA523**

Pulse-or-tone dialing capability

**The KX-TGA523 will only work with the Panasonic cordless phone systems:  
KX-TG5200/KX-TG5202/  
KX-TG5210/KX-TG5212/  
KX-TG5230/KX-TG5240/  
KX-FPG391**

### Contents by Section

- 1 Getting Started
- 2 Listening to the Radio
- 3 Using the Sleep Timer
- 4 Using the Alarms
- 5 Things You Should Know
- 6 Referencia rápida

**PLEASE READ BEFORE  
USE AND SAVE.**

**Charge the battery for  
6 hours before initial use.**

**Panasonic World Wide Web address:  
<http://www.panasonic.com>  
for customers in the USA or Puerto Rico**

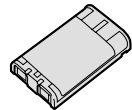


# 1 Getting Started



## 1-A Accessories (included)

Battery .....one  
Order No. HHR-P104



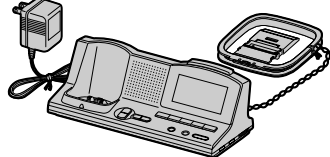
Handset Cover .....one  
Order No. PQKK10142Z1



Belt Clip .....one  
Order No. PQKE10377Z1



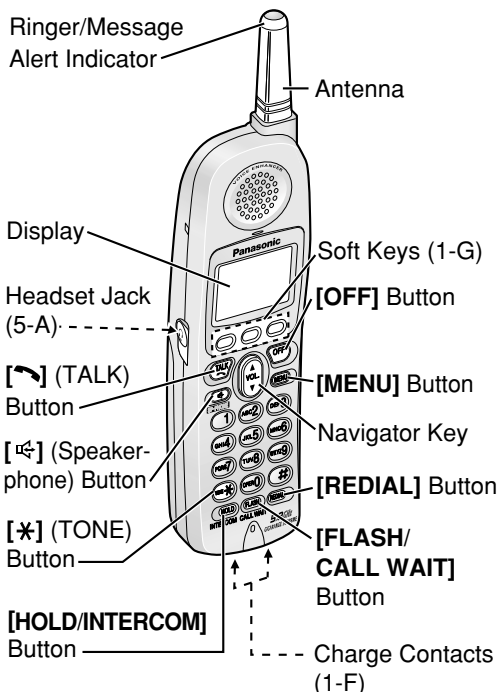
Charger Unit .....one  
Charger Order No. KX-TGA523M  
AC Adaptor Order No. PQLV1Z  
Loop Antenna Order No.  
N1DAEYY00002



•For extra orders, call  
1-800-332-5368.  
For hearing or speech impaired  
TTY users, call 1-866-605-1277.

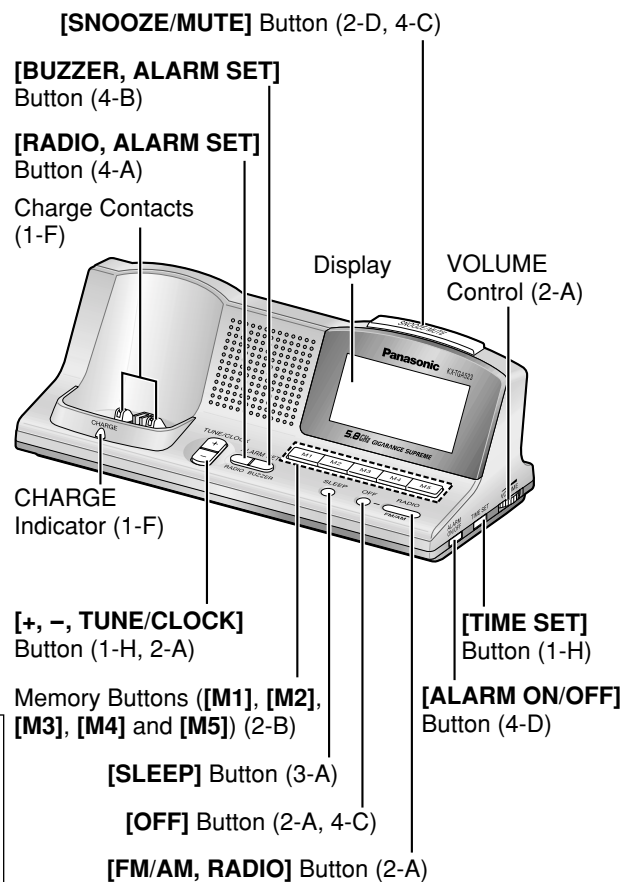
## 1-B Location of Controls

### Handset

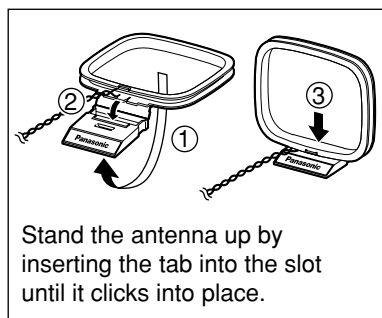


**Note:** The steps necessary to start up the handset are described in these Operating Instructions. Please read the KX-TG5200/KX-TG5202/KX-TG5210/KX-TG5212/KX-TG5230/KX-TG5240/KX-FPG391 operating instructions for further details about the handset operations.

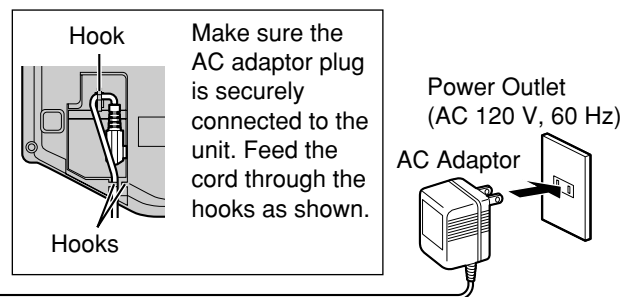
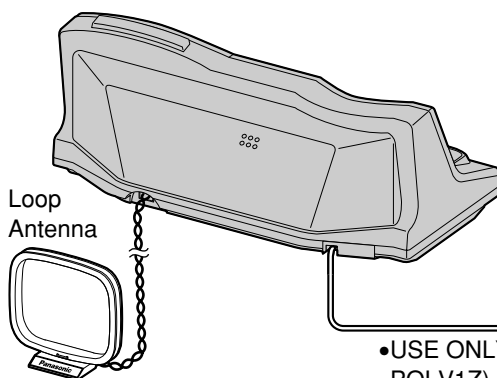
### Charger (with Clock Radio)



## 1-C Connecting the AC Adaptor/Setting Up the Loop Antenna



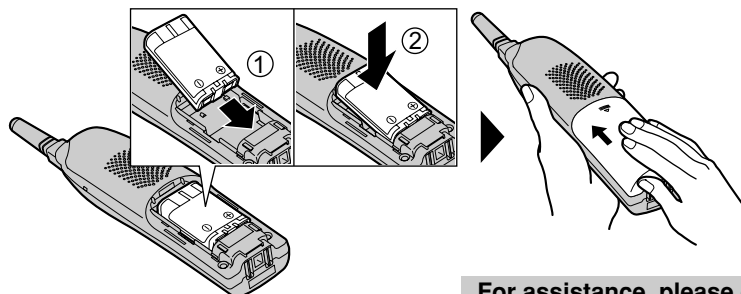
•To disconnect the antenna, firmly pull the antenna cord, holding the cord near the plug.



- USE ONLY WITH Panasonic AC ADAPTOR PQLV1 (Order No. PQLV1Z).
- The AC adaptor must remain connected at all times. (It is normal for the adaptor to feel warm during use.)

## 1-D Installing the Handset Battery

Insert the battery (1), and press it down until it snaps into the compartment (2). Close the cover.

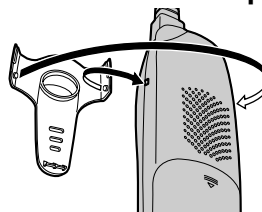


For assistance, please call: 1-800-211-PANA(7262)

## 1-E Belt Clip

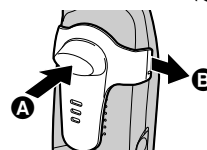
You can hang the handset on your belt or pocket using the included belt clip.

### To attach the belt clip

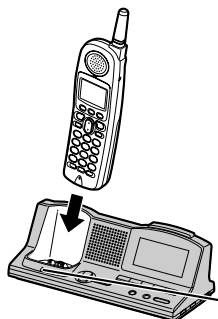


### To remove the belt clip

While pressing the top of the clip (A), pull the right edge in the direction of the arrow (B).



## 1-F Battery Charge



Place the handset on the charger and charge for **6 hours** before initial use.

- The unit beeps once, the CHARGE indicator lights and “Charging” is displayed.
- When the battery is fully charged, “Charge completed” is displayed if there are no new calls in the Caller List.

CHARGE Indicator

- Recharge the battery when:
  - “Recharge battery” is displayed on the handset,
  - “” flashes, or
  - the handset beeps intermittently while it is in use.
- If the battery has been discharged, the handset will display “Charge for 6 HRS” and “” when you place the handset on the charger. The handset will not work unless the battery is charged. Continue charging.

## Battery information

After your Panasonic battery is fully charged, you can expect the following performance:

Operation	Operating time
While in use (TALK)	Up to 5 hours
While not in use (Standby)	Up to 11 days
While using Clarity Booster feature	Up to 3 hours

- Clean the charge contacts of the handset and the charger with a soft, dry cloth once a month. Clean more often if the unit is subject to grease, dust or high humidity. Otherwise the battery may not charge properly.

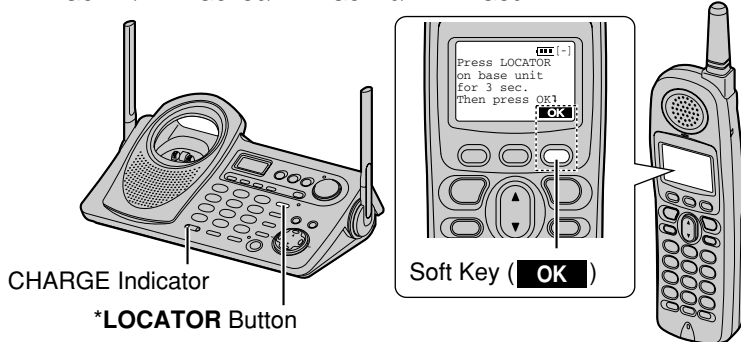
A nickel metal hydride battery that is recyclable powers the product you have purchased. Please call 1-800-8-BATTERY for information on how to recycle this battery.



## 1-G Handset Registration

This handset must be registered to a KX-TG5200/KX-TG5202/ KX-TG5210/KX-TG5212/KX-TG5230/KX-TG5240/KX-FPG391 base unit.

The handset will be assigned an extension number at registration. The KX-TGA523 will not work without one of the following Panasonic cordless phone systems: KX-TG5200/KX-TG5202/KX-TG5210/ KX-TG5212/KX-TG5230/KX-TG5240/KX-FPG391.



- Base unit model shown here is KX-TG5240.
- \*The location of LOCATOR button varies by base unit model.  
KX-TG5200/KX-TG5202: LOCATOR [], [], [], [] or []
- KX-TG5210/KX-TG5212: LOCATOR/INTERCOM [], [], [], [] or []
- KX-TG5230/KX-TG5240/KX-FPG391: [LOCATOR/INTERCOM/TRANSFER]

Only one handset can be registered at a time.

**Make sure the base unit and the other handsets are not being used. Have both the handset and base unit nearby during registration.**

The handset display shows the instructions as shown on the right.

Press LOCATOR on base unit for 3 sec. Then press OK

OK

- 1 Base unit:** Press and hold the \*LOCATOR button for 3 seconds.

- The CHARGE indicator flashes. After the CHARGE indicator starts flashing, the rest of the procedure must be completed within 1 minute.
- On the KX-FPG391, “HS REGISTRATION” is displayed.

- 2 Handset:**

- ① Press the soft key (OK).
  - ② Wait until a long beep sounds and the display shows the new extension number.
- Registration is complete.

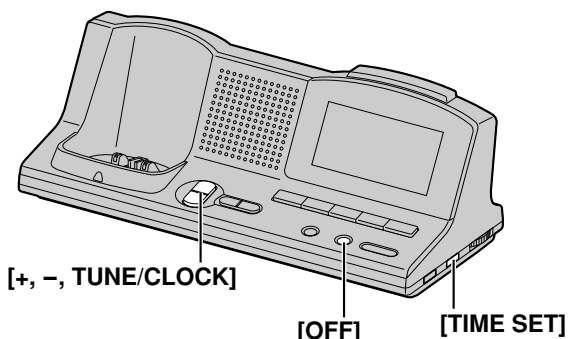
Ex. Extension number 2

Handset [2] Registered

- The registered number “[1]” to “[4]” is shown on the top right of the display.
- You can stop registration by pressing [OFF] on the handset and pressing the \*LOCATOR button on the base unit.
- To cancel the handset’s registration, please see the base unit Operating Instructions.
- If you try to register this handset to the KX-TG6500 base unit, “Wrong handset Refer to manual” is displayed. The base units for this handset are mentioned above.

## 1-H Setting Time

The charger unit has a 12-hour clock (monthly accuracy  $\pm 30$  seconds). After the AC adaptor is connected, “12:00” flashes on the display. Follow the steps to set the clock.



[+, -, TUNE/CLOCK]

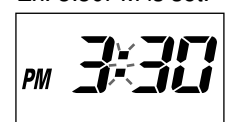
[OFF]

[TIME SET]

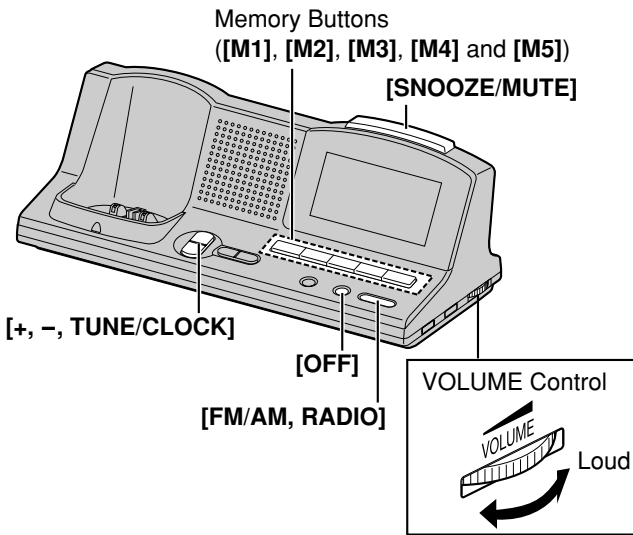
- 1 Press [TIME SET].
- 2 Adjust the time by pressing [+ , TUNE/CLOCK] or [- , TUNE/CLOCK].
  - Pressing [+] or [-] increases or decreases the time in one-minute units.
  - Pressing and holding [+] or [-] increases or decreases the time faster.
- 3 Press [TIME SET] to set the clock.
  - The time stops flashing.



Ex. 3:30PM is set.

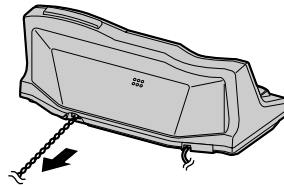


- You can exit time setting mode any time by pressing [OFF].
- If a power failure occurs, the display will show “E.” for about 10 minutes, then it will become blank. After power returns, “12:00” will be displayed. The clock memory will be lost. Set the clock. The radio alarm and buzzer alarm memory will be retained for about 10 minutes during a power failure (4-A, 4-B).



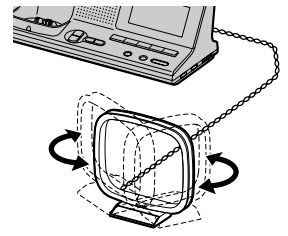
## 2-C Improving Reception

### For FM



Extend the cord and place the antenna in a location where reception improves.

### For AM



Reorient the antenna horizontally until reception improves.

## 2-D Muting the Radio

Press **[SNOOZE/MUTE]** while listening to the radio.

- “**MUTE**” flashes on the display.
- To release the mute, press **[SNOOZE/MUTE]** again.

## 2-E Changing the FM Tuning Sensitivity

You can change the sensitivity used for tuning in FM stations from 0.2 MHz (factory preset) increments to 0.1 MHz.

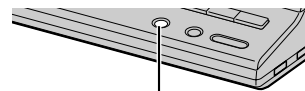
- Note that if you change the sensitivity, all FM station presets (2-B) and the station used for the radio alarm (4-A) will return to the factory preset. The buzzer will sound at the set radio alarm time.

1. Press **[FM/AM, RADIO]** to turn the radio on.
2. Press **[FM/AM, RADIO]** to switch to the FM band.
3. Press and hold **[FM/AM, RADIO]** for about 5 seconds.
  - The display changes to show the lowest available FM frequency.

- To change the sensitivity back to 0.2 MHz increments, repeat the procedure above.
- If the AM band is selected and you press and hold **[FM/AM, RADIO]** for about 5 seconds, the band will change to FM but the FM tuning sensitivity will not change.

# 3 Using the Sleep Timer Section 3

## 3-A Setting the Sleep Timer



**[SLEEP]**

The sleep timer turns the radio off after a set time.

While the radio is on, press **[SLEEP]** repeatedly to select the time (minutes).

- Each time you press **[SLEEP]**, the time will change as follows:

30 → 60 → 90 → 120 → OFF

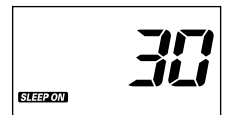
- The radio will automatically turn off after the selected sleep time.
- You cannot set the sleep timer while an alarm is sounding (4-A, 4-B).

**To view the time remaining:** Press **[SLEEP]**.

**To change the setting**

1. Press **[SLEEP]**. (The time remaining is displayed.)
2. Immediately after the time remaining is displayed, press **[SLEEP]** repeatedly to select the sleep time.

Ex. Sleep Time: 30 min.



## 2-A Manual Tuning

- 1 Press **[FM/AM, RADIO]** to turn the radio on.
- 2 Press **[FM/AM, RADIO]** to switch between FM and AM.
- 3 Tune in to the desired station by pressing **[+, TUNE/CLOCK]** or **[-, TUNE/CLOCK]**.
  - Press and hold **[+]** or **[-]** to search faster.
- 4 Adjust the volume using the VOLUME control.



**To turn the radio off**

Press **[OFF]**.

## 2-B Preset Tuning

You can assign one FM station and one AM station to each of the 5 memory buttons (**[M1]**, **[M2]**, **[M3]**, **[M4]** and **[M5]**) for a total of 10 stations.

**To preset stations**

- 1 Press **[FM/AM, RADIO]** to turn the radio on.
- 2 Press **[FM/AM, RADIO]** to switch between FM and AM.
- 3 Tune in to the desired station by pressing **[+, TUNE/CLOCK]** or **[-, TUNE/CLOCK]**.
  - Press and hold **[+]** or **[-]** to search faster.
- 4 Press and hold a memory button (**[M1]** to **[M5]**) until the memory number is displayed.
  - To turn the radio off, press **[OFF]**.



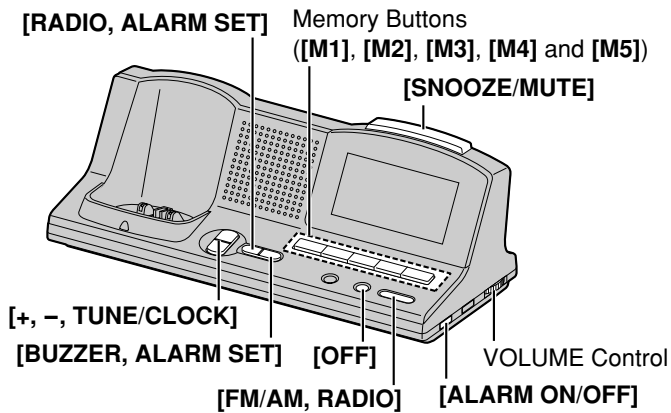
Ex. Memory Number 1

- If you assign another station of the same band (FM or AM) to the memory button, the previously assigned station will be erased.
- If a power failure occurs, station presets will be retained for about 10 minutes.

**To listen to preset stations**

- 1 Press **[FM/AM, RADIO]** to turn the radio on.
- 2 Press **[FM/AM, RADIO]** to switch between FM and AM.
- 3 Press the desired memory button (**[M1]** to **[M5]**).
  - To turn the radio off, press **[OFF]**.

The charger unit features an alarm clock. You can set the alarm to play the radio or to sound a buzzer at a set time. The radio alarm and the buzzer alarm can be set separately.



## 4-A Setting the Radio Alarm

- Press **[RADIO, ALARM SET]**.
  - If you do not proceed to the next step within 5 seconds, the display will return to the current time.
- Adjust the alarm time by pressing **[+, TUNE/CLOCK]** or **[-, TUNE/CLOCK]**.
  - Pressing and holding **[+]** or **[-]** changes the time faster.
- Press **[RADIO, ALARM SET]**.
  - The radio will automatically turn on.
- Press **[FM/AM, RADIO]** to switch between FM and AM.
- Press the desired memory button (**[M1]** to **[M5]**).  
OR  
Tune in to the desired station by pressing **[+, TUNE/CLOCK]** or **[-, TUNE/CLOCK]**.
- Adjust the volume by using the VOLUME control.
- Press **[RADIO, ALARM SET]** to save the radio alarm time and the station.
  - The selected station stops flashing and disappears.
  - The selected alarm time returns to the current time.
  - "RADIO"** is displayed while the radio alarm is turned on.
  - The radio will turn off.



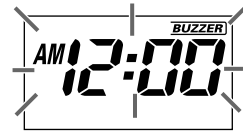
Ex. Memory Number 1 is set to AM 520 kHz.

### To confirm the radio alarm time and station

- Press **[RADIO, ALARM SET]**.
- The alarm time and the station will be displayed for about 5 seconds.

## 4-B Setting the Buzzer Alarm

- Press **[BUZZER, ALARM SET]**.
    - If you do not proceed to the next step within 5 seconds, the display will return to the current time.
  - Adjust the alarm time by pressing **[+, TUNE/CLOCK]** or **[-, TUNE/CLOCK]**.
    - Pressing and holding **[+]** or **[-]** changes the time faster.
  - Press **[BUZZER, ALARM SET]** to save the buzzer alarm time.
    - The time stops flashing and returns to the current time.
    - "BUZZER"** is displayed while the buzzer alarm is turned on.
    - The buzzer will start at the set time and will automatically stop after 10 minutes.
- You can exit alarm setting mode any time by pressing **[OFF]**.  
If a power failure occurs, the buzzer alarm time will be retained for about 10 minutes.

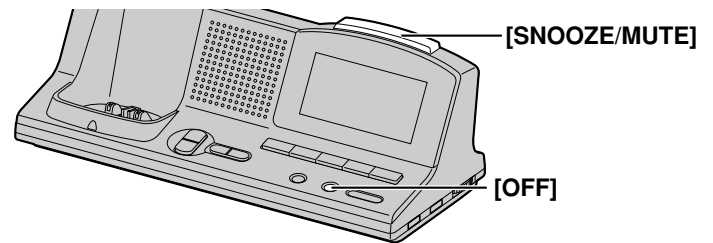


### To confirm the buzzer alarm time

- Press **[BUZZER, ALARM SET]**.
- The alarm time will be displayed for about 5 seconds.

## 4-C Stopping the Alarm

When the alarm sounds at the set time, **"ALARM ON"** is displayed and **"RADIO"** and/or **"BUZZER"** flashes.



### To stop the alarm temporarily (SNOOZE)

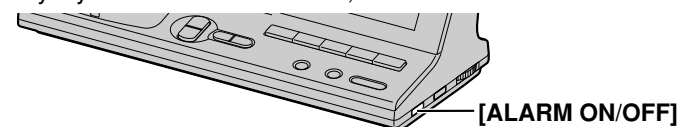
- Press **[SNOOZE/MUTE]**.
- The alarm will then start again in 6 minutes. You can press **[SNOOZE/MUTE]** again to stop the alarm.

### To stop the alarm for the day

- Press **[OFF]**.
- The setting is retained and the alarm will sound daily until you turn the alarm off (4-D). **"RADIO"** and/or **"BUZZER"** will remain on the display.

## 4-D Turning the Alarm on/off

Once alarm times have been set for the radio alarm and buzzer alarm, the two alarms can be turned off and on independently and together. If an alarm is turned on, it will sound at the set time everyday. If an alarm is turned off, it will not sound.



Press **[ALARM ON/OFF]** repeatedly to select the desired alarm mode. 4 modes are available.

- Radio alarm on (**"RADIO"** is displayed.)
- Buzzer alarm on (**"BUZZER"** is displayed.)
- Both alarms on (**"RADIO"** and **"BUZZER"** are displayed.)
- Both alarms off (**"RADIO"** and **"BUZZER"** disappear.)

- When an alarm mode is selected, the alarm time is displayed briefly. If the alarm time is not set, **"-:-"** is displayed briefly.

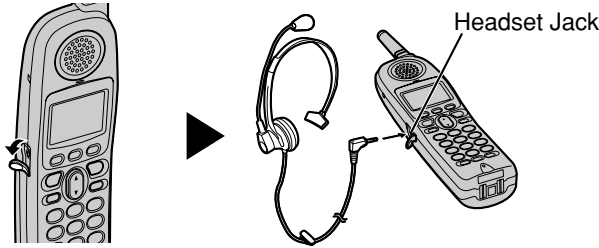


**5-A Optional Headset**

Connecting an optional headset to the handset allows hands-free phone conversation. Please use only a Panasonic KX-TCA60, KX-TCA86, KX-TCA88, KX-TCA88HA, KX-TCA91, KX-TCA92 or KX-TCA98 headset. To order, call the accessories telephone number in section 1-A.

**To connect a headset**

Open the headset jack cover, and insert the headset plug into the headset jack as shown.



Headset sold separately. Model shown here is KX-TCA88.

- To switch to the speakerphone while using the headset: Press [4]. To return to the headset, press [↶].

**5-B Troubleshooting (for Charger Unit)**

Problem	Cause & Remedy
"12:00" is flashing on the display.	•The clock needs to be set (1-H).
There is excessive noise from the radio.	•Move the charger away from other electrical appliances.
No sound from the radio.	•Make sure the AC adaptor is connected and the antenna is standing (1-C).
"E." is displayed below the time.	•A power failure may have occurred or the AC adaptor may be disconnected. Reconnect power. If the unit loses power for about 10 minutes, clock memory will be lost (1-H). Radio and buzzer alarm settings (4-A, 4-B), and radio station presets (2-B) will also be lost.
While programming, the display will return to the current time and you cannot program any function.	•Do not pause for over 60 seconds while programming.
All preset FM stations have been erased and the radio alarm does not sound at the set time.	•If you have changed the FM tuning sensitivity (2-E), all preset FM stations and the radio alarm setting will be erased. The buzzer alarm will sound at the set time instead of the radio.
The radio/buzzer alarm does not sound at the set time.	•A power failure may have occurred and the alarm time may be erased. Set the time (1-H, 4-A, 4-B).
If you cannot solve your problem	<ul style="list-style-type: none"> <li>•For handset troubleshooting, please see the base unit Operating Instructions.</li> <li>•Visit our website: <a href="http://www.panasonic.com/support">http://www.panasonic.com/support</a></li> <li>•Contact us via the web at: <a href="http://www.panasonic.com/contactinfo">http://www.panasonic.com/contactinfo</a></li> <li>•Call our customer call center at: 1-800-211-PANA(7262)</li> </ul>

**5-C FCC and Other Information**

**WHEN PROGRAMMING EMERGENCY NUMBERS AND/OR MAKING TEST CALLS TO EMERGENCY NUMBERS:**

- 1) Remain on the line and briefly explain to the dispatcher the reason for the call.
- 2) Perform such activities in the off-peak hours, such as early morning or late evenings.

This device complies with Part 15 of the FCC Rules. Operation is subject to the following two conditions: (1) This device may not cause harmful interference, and (2) this device must accept any interference received, including interference that may cause undesired operation.

Privacy of communications may not be ensured when using this phone.

**CAUTION:**

Any changes or modifications not expressly approved by the party responsible for compliance could void the user's authority to operate this device.

**Note:**

This equipment has been tested and found to comply with the limits for a Class B digital device, pursuant to Part 15 of the FCC Rules. These limits are designed to provide reasonable protection against harmful interference in a residential installation. This equipment generates, uses, and can radiate radio frequency energy and, if not installed and used in accordance with the instructions, may cause harmful interference to radio communications. However, there is no guarantee that interference will not occur in a particular installation. If this equipment does cause harmful interference to radio or television reception, which can be determined by turning the equipment off and on, the user is encouraged to try to correct the interference by one or more of the following measures:

- Reorient or relocate the receiving antenna.
- Increase the separation between the equipment and receiver.
- Connect the equipment into an outlet on a circuit different from that to which the receiver is connected.
- Consult the dealer or an experienced radio/TV technician for help.

Operating near 5.8GHz electrical appliances may cause interference. Move away from the electrical appliances.

**FCC RF Exposure Warning:**

To comply with FCC RF exposure requirements, the handset unit may be carried and operated with only the specific provided belt-clip. Other non-tested belt-clips or similar body-worn accessories may not comply and must be avoided.

This equipment is hearing aid compatible as defined by the FCC in 47 CFR Section 68.316.

When you hold the phone to your ear, noise might be heard in your Hearing Aid. Some Hearing Aids are not adequately shielded from external RF (radio frequency) energy. If noise occurs, use an optional headset accessory or the speakerphone option (if applicable) when using this phone. Consult with your audiologist or Hearing Aid manufacturer about the availability of Hearing Aids which provide adequate shielding to RF energy commonly emitted by digital devices.

**CAUTION:**

To reduce the risk of fire or injury to persons, read and follow these instructions.

1. Use only the battery(ies) specified.
2. Do not dispose of the battery(ies) in a fire. They may explode. Check with local waste management codes for special disposal instructions.
3. Do not open or mutilate the battery(ies). Released electrolyte is corrosive and may cause burns or injury to the eyes or skin. The electrolyte may be toxic if swallowed.

- Exercise care in handling batteries in order not to short the battery to conductive materials such as rings, bracelets, and keys. The battery and/or conductor may overheat and cause burns.
- Charge the battery(ies) provided with or identified for use with this product only in accordance with the instructions and limitations specified in this manual.

**WARNING:**

TO PREVENT FIRE OR SHOCK HAZARD, DO NOT EXPOSE THIS PRODUCT TO RAIN OR ANY TYPE OF MOISTURE.

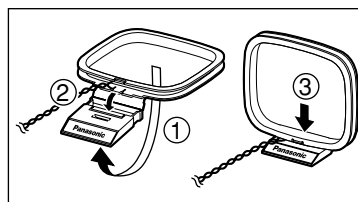
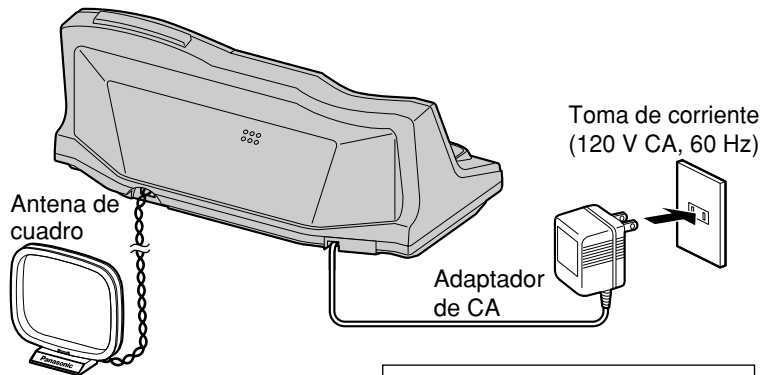
- The AC adaptor is used as the main disconnect device, ensure that the AC outlet is located/installed near the unit and is easily accessible.

**For your future reference**

Serial No. \_\_\_\_\_ Date of purchase \_\_\_\_\_  
(found on the bottom of the unit)

Name and address of dealer \_\_\_\_\_

- This cordless telephone is designed for use in the United States of America. Sale or use of this product in other countries may violate local laws.
- Ce téléphone sans fil est conçu pour être utilisé aux États-Unis d'Amérique. La vente ou l'emploi de cet appareil dans certains autres pays peut constituer une infraction à la législation locale.
- Este teléfono inalámbrico fue elaborado para uso en los Estados Unidos de América. La venta o el empleo de este producto en ciertos países puede constituir violación de la legislación local.
- このコードレス電話機は、日本国外での使用を目的として設計されており、日本国内での使用は法律違反となります。従って、当社では日本国内においては原則として修理などのサービスは致しかねます。

**6-A Preparación****Para conectar el adaptador de CA o instalar la antena de cuadro**

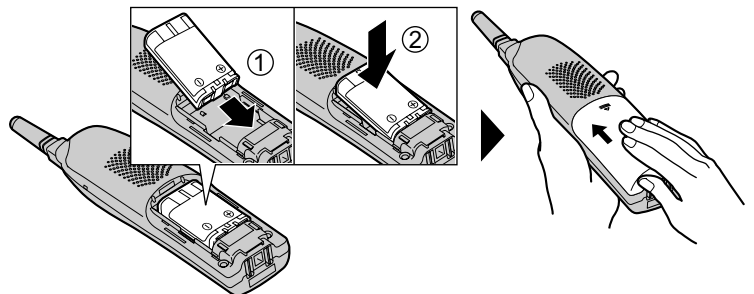
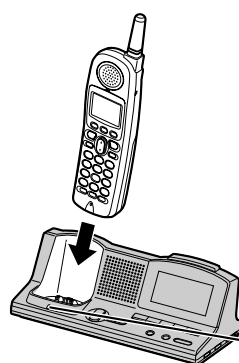
**Gancho** Asegúrese de que la clavilla del adaptador de CA esté firmemente conectada a la unidad. Enchufe el cable a través de los ganchos como se muestra en la ilustración.

**Ganchos**

- USAR SÓLO CON EL ADAPTADOR DE CA KX-TCA1 (Nº. de pedido: KX-TCA1-G) de Panasonic.
- El adaptador de CA debe permanecer conectado en todo momento. (Es normal que el adaptador se caliente durante su uso.)

**Instalación de la batería**

Inserte la batería (①), y empújela hacia abajo hasta que encaje con un chasquido en el compartimento (②). Cierre la cubierta.

**Carga de la batería**

Coloque la unidad portátil en la unidad de carga y cárguela durante **6 horas** antes de empezar a usarla.

- La unidad emite un pitido, el indicador CHARGE se ilumina, y "Cargando" aparece en pantalla.
- Cuando la batería está completamente cargada, aparece "Carga completada" si no hay llamadas nuevas en la lista de personas que llaman.

Indicador CHARGE

Para usar la presilla para el cinturón, consulte la sección 1-E. Para usar un auricular opcional (modelos KX-TCA60, KX-TCA86, KX-TCA88, KX-TCA88HA, KX-TCA91, KX-TCA92 o KX-TCA98), consulte la sección 5-A.

**5-D Specifications****Handset**

**Power Supply:** Ni-MH battery (3.6 V, 830 mAh)  
**Frequency:** 5.76 GHz – 5.84 GHz  
**Dimensions (H x W x D):** Approx. 220 mm x 53 mm x 37 mm  
 (8 21/32" x 2 3/32" x 1 15/32")  
**Mass (Weight):** Approx. 210 g (0.46 lb.)  
**Security Codes:** 1,000,000

**Dialing Mode:**

Tone (DTMF)/Pulse

**Charger**

**Power Supply:** AC Adaptor (120 V AC, 60 Hz)  
**Power Output:** 300 mW (RMS....max.)  
**Frequency Range:** **FM:** 87.9 – 107.9 MHz (200 kHz steps)  
 87.5 – 108.0 MHz (100 kHz steps)  
**AM:** 520 – 1710 kHz (10 kHz steps)

**Frequency Response:** 40 Hz – 4 kHz for FM band

**Monthly Accuracy:** ±30 seconds

**Speaker:** 3.6 cm (1 13/32") 8 Ω x 1

**Dimensions (H x W x D):** Approx. 85 mm x 194 mm x 87 mm  
 (3 11/32" x 7 5/8" x 3 1/16")

**Mass (Weight):** Approx. 270 g (0.6 lb.)

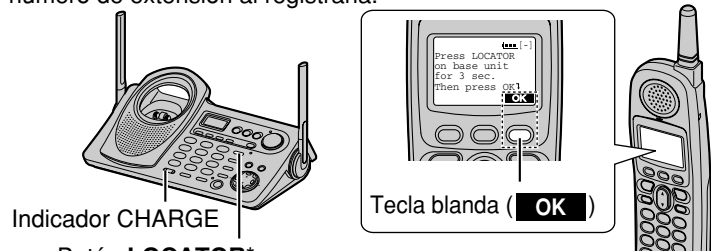
**Operating Environment:** 5 °C – 40 °C (41 °F – 104 °F)

Specifications are subject to change without notice.

## 6-B Para escuchar la radio

### Para registrar la unidad portátil

Esta unidad portátil deberá ser registrada en la unidad base KX-TG5200/KX-TG5202/KX-TG5210/KX-TG5212/KX-TG5230/KX-TG5240/KX-FPG391. A la unidad portátil se le asignará su número de extensión al registrarla.



• El modelo de la unidad base mostrado aquí es un KX-TG5240.

\* La ubicación del botón LOCATOR varía según el modelo de unidad base.

KX-TG5200/KX-TG5202: LOCATOR [↔], [↔], [↔], [↔] o [ALT]

KX-TG5210/KX-TG5212: LOCATOR/INTERCOM [↔], [↔], [↔], [↔] o [ALT]

KX-TG5230/KX-TG5240/KX-FPG391: [LOCATOR/INTERCOM/TRANSFER]

Sólo se puede registrar una unidad portátil cada vez.

**Asegúrese de que la unidad base y las demás unidades portátiles no se están utilizando. Tenga a mano tanto la unidad portátil como la unidad base durante el registro.**

La pantalla de la unidad portátil muestra las instrucciones tal y como aparecen a la derecha.

Press LOCATOR  
on base unit  
for 3 sec.  
Then press OK

**1 Unidad base:** Mantenga presionado el botón de LOCATOR\* durante 3 segundos.

- Indicador CHARGE parpadea. Después de que el indicador CHARGE empiece a parpadear, el resto del procedimiento debe completarse antes de que pase 1 minuto.
- En la pantalla de KX-FPG391, se visualizará "HS REGISTRATION".

**2 Unidad portátil:**

① Presione la tecla blanda (OK).

② Espere hasta que suene un pitido largo y que la pantalla muestre el nuevo número de extensión.

• El registro ha finalizado.

Ej.: Número de extensión 2

Handset [2]  
Registered

• El número registrado "[1]" a "[4]" aparece en la esquina superior derecha de la pantalla.

• Puede detener el proceso de registro presionando [OFF] en la unidad portátil y presionando el botón de LOCATOR\* en la unidad base.

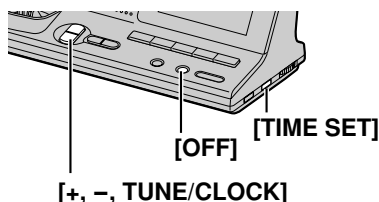
• Para cancelar el registro de la unidad portátil, consulte las instrucciones de funcionamiento de la unidad base.

• Si intenta registrar esta unidad portátil en la unidad base KX-TG6500, aparece, "Wrong handset Refer to manual". Las unidades base para esta unidad portátil se mencionan arriba.

• Para cambiar el idioma de pantalla de inglés a español en la unidad portátil, presione [MENU][0][8][2], y a continuación presione la tecla blanda (GUARDAR).

### Para poner la hora

La unidad de carga tiene un reloj de 12 horas (con una desviación mensual máxima de ±30 segundos). Una vez conectado el adaptador de CA, "12:00" parpadea en la pantalla. Siga los pasos a continuación para poner la hora.



**1** Presione [TIME SET].

**2** Ajuste la hora presionando [+, TUNE/CLOCK] o [-, TUNE/CLOCK].

• Presionando [+] o [-] se aumenta o se reduce la hora en unidades de un minuto.

• Manteniendo presionado [+] o [-] se aumenta o se reduce la hora más rápidamente.

AM 12:00

**3** Presione [TIME SET] para poner la hora.

• La hora deja de parpadear.

### Sintonización manual

**1** Presione [FM/AM, RADIO] para encender la radio.

**2** Presione [FM/AM, RADIO] para cambiar de FM a AM y viceversa.

**3** Sintonice la estación deseada presionando [+, TUNE/CLOCK] o [-, TUNE/CLOCK].

• Mantenga presionado [+] o [-] para buscar más rápido.

**4** Ajuste el volumen por medio del mando VOLUME.



### Para apagar la radio

Presione [OFF].

### Presintonización

Se puede asignar una estación FM y una estación AM a cada uno de los 5 botones de memoria ([M1], [M2], [M3], [M4] y [M5]) para presintonizar un total de 10 estaciones.

#### Para presintonizar estaciones:

**1** Presione [FM/AM, RADIO] para encender la radio.

**2** Presione [FM/AM, RADIO] para cambiar de FM a AM y viceversa.

**3** Sintonice la estación deseada presionando [+, TUNE/CLOCK] o [-, TUNE/CLOCK].

• Mantenga presionado [+] o [-] para buscar más rápido.

**4** Mantenga presionado un botón de memoria ([M1] a [M5]) hasta que aparezca en pantalla el número de la memoria.



• Para apagar la radio, presione [OFF]. Ej.: Número de memoria 1

#### Para escuchar las estaciones presintonizadas:

**1** Presione [FM/AM, RADIO] para encender la radio.

**2** Presione [FM/AM, RADIO] para cambiar de FM a AM y viceversa.

**3** Presione el botón de memoria deseado ([M1] a [M5]).

• Para apagar la radio, presione [OFF].

### Para mejorar la recepción

**Para FM:** Extienda el cable y coloque la antena en un lugar en el que se observe una mejora en la recepción.

**Para AM:** Vuelva a orientar la antena horizontalmente hasta observar una mejora en la recepción.

### Para silenciar la radio

Presione [SNOOZE/MUTE] mientras escucha la radio.

• Para anular el silenciamiento, presione [SNOOZE/MUTE] de nuevo.

### Para cambiar la sensibilidad FM

La sensibilidad utilizada para sintonizar emisoras FM se puede cambiar desde incrementos de 0.2 MHz (preconfiguración de fábrica) hasta 0.1 MHz.

• Tenga en cuenta que si cambia la sensibilidad, todas las presintonías de emisoras FM (6-B) así como la emisora utilizada para la alarma de radio (6-D) recuperarán la preconfiguración de fábrica. El timbre sonará a la hora configurada para la alarma de radio.

1. Presione [FM/AM, RADIO] para encender la radio.

2. Presione [FM/AM, RADIO] para cambiar a la banda de FM.

3. Mantenga presionado [FM/AM, RADIO] durante unos 5 segundos.

• Para volver a cambiar la sensibilidad a incrementos de 0.2 MHz, repita el procedimiento anterior.

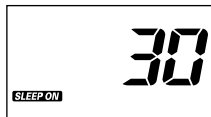


## 6-C Configuración del temporizador para dormir

Con la radio encendida, presione **[SLEEP]** repetidamente para seleccionar la hora (minutos). Ej.: Tiempo de temporizador para dormir: 30 min.

• Con cada presión de **[SLEEP]** la hora cambia como sigue:

30 → 60 → 90 → 120 → OFF



• La radio se apagará automáticamente después de que transcurra el tiempo de temporizador para dormir seleccionado.

## 6-D Uso de las alarmas

### Para configurar la alarma de radio

- Presione **[RADIO, ALARM SET]**.
  - Si no procede al paso siguiente durante 5 segundos, la pantalla regresa a la de la hora actual.
- Ajuste la hora de la alarma presionando **[+, TUNE/CLOCK]** o **[-, TUNE/CLOCK]**.
  - Manteniendo presionado **[+]** o **[-]** se cambia la hora más rápidamente.
- Presione **[RADIO, ALARM SET]**.
  - La radio se encenderá automáticamente.
- Presione **[FM/AM, RADIO]** para cambiar de FM a AM y viceversa.
- Presione el botón de memoria deseado (**[M1]** a **[M5]**).
  - Sintonice la estación deseada presionando **[+, TUNE/CLOCK]** o **[-, TUNE/CLOCK]**.
- Ajuste el volumen por medio del mando VOLUME.
- Presione **[RADIO, ALARM SET]** para guardar la hora de la alarma de radio y la estación.
  - La radio se apagará.



### Para configurar la alarma de timbre

- Presione **[BUZZER, ALARM SET]**.
  - Si no procede al paso siguiente durante 5 segundos, la pantalla regresa a la de la hora actual.
- Ajuste la hora de la alarma presionando **[+, TUNE/CLOCK]** o **[-, TUNE/CLOCK]**.
  - Manteniendo presionado **[+]** o **[-]** se cambia la hora más rápidamente.
- Presione y luego suelte **[BUZZER, ALARM SET]** para guardar la hora de la alarma de timbre.



### Para detener la alarma

#### Para detener la alarma temporalmente (SNOOZE):

Presione **[SNOOZE/MUTE]**.

Para detener la alarma para todo el día: Presione **[OFF]**.

• La configuración no cambia y la alarma sonará diariamente a la misma hora, a no ser que usted la detenga completamente.

## 6-E Encendido y apagado de la alarma

Una vez que se han configurado los tiempos de las alarmas para la alarma de radio y la alarma de timbre, las dos alarmas se pueden encender y apagar juntas y por separado. Si se enciende una alarma, sonará a la hora configurada todos los días. Si se apaga una alarma, no sonará.

Presione **[ALARM ON/OFF]** repetidamente para seleccionar el modo de alarma deseado. Hay 4 modos disponibles.

- Alarma de radio encendida (aparece "**RADIO**").
- Alarma de timbre encendida (aparece "**BUZZER**").
- Las dos alarmas encendidas (aparecen "**RADIO**" y "**BUZZER**").
- Las dos alarmas apagadas ("**RADIO**" y "**BUZZER**" desaparecen.)

**Attach your purchase receipt here.**

### **For product service**

- Visit our website: <http://www.panasonic.com/support>
- Contact us via the web at: <http://www.panasonic.com/contactinfo>
- Call us at: 1-800-211-PANA(7262)

### **When you ship the product**

- Carefully pack your unit, preferably in the original carton.
- Attach a letter, detailing the symptom, to the outside of the carton.

Symptom

---

- Send the unit to an authorized servicer, prepaid and adequately insured.
- Do not send your unit to the Panasonic Consumer Electronics Company listed below or to executive or regional sales offices. These locations do not repair consumer products.

**If you need assistance with the setup or operation,  
please call 1-800-211-PANA(7262)**

**For hearing or speech impaired TTY users, TTY : 1-877-833-8855**

**Panasonic Consumer Electronics Company,  
Division of Matsushita Electric Corporation of America**  
One Panasonic Way, Secaucus, New Jersey 07094

**Panasonic Sales Company,  
Division of Matsushita Electric of Puerto Rico, Inc.**  
Ave. 65 de Infantería, Km. 9.5, San Gabriel Industrial Park  
Carolina, Puerto Rico 00985

© 2004 Panasonic Communications Co., Ltd. All Rights Reserved.

**PQQX14029YA** S0104-1034

# IMPORTANT!

Before you Return Product to the Retailer!

*If You Need Assistance With the Set-Up Or Operation*

1-800-211-PANA (7262)

Toll Free

Monday—Friday 9am—9pm,

Saturday—Sunday 9am—7pm, EST

OR

Visit our Website: <http://www.panasonic.com>