



USER'S MANUAL  
Part 2

## Expansion Handset 5800/5806



For Customer Service Or Product  
Information, Visit Our Website At  
[www.telephones.att.com](http://www.telephones.att.com)

Please also read  
**Part 1 — Important  
Product Information**



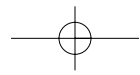
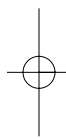
Visit us at [www.telephones.att.com](http://www.telephones.att.com)

© 2004 Advanced American Telephones.  
All Rights Reserved.  
AT&T and the Globe Design are  
trademarks of AT&T Corp., licensed to  
Advanced American Telephones.  
Printed in China. Issue 3AT&T 06/04

# CONTENTS

<b>BEFORE YOU BEGIN</b> .....	1
About Handset Registration.....	1
About Softkeys.....	1
<b>CHARGE THE BATTERY</b> .....	2
<b>REGISTER THE HANDSET</b> .....	3
To Model 5830/5870/3358/3658B Base Unit.....	3
To Model 5840/5845 Base Unit.....	3
<b>INSTALLATION</b> .....	4
Belt Clip.....	4
Headset.....	4
Battery Life.....	5
Charge the Handset Battery Pack.....	5

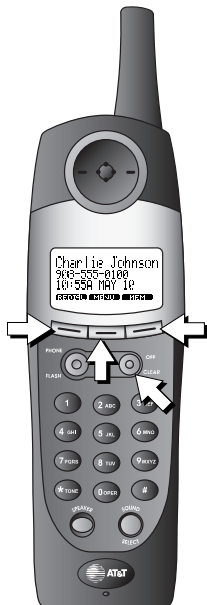
**CONTENTS**



## BEFORE YOU BEGIN

### About Handset Registration

- You must register this (and any other) handset with the base, following the directions in “REGISTER THE HANDSET.” This handset is compatible with telephone models 5840/3358/3658B/5845/5870 and 5830.
- The original handset that came with the base is automatically registered as Handset 1.
- Additional handsets will be assigned Handset 2, Handset 3, Handset 4, Handset 5, and Handset 6.
- Whenever you install a handset battery pack, the handset will display `SEARCHING FOR BASE` (if it's registered) or `ENTER BASE ID` (if it's not registered).



### About Softkeys

- The handset softkeys are located below the screen display.
- Press the softkey below the operation displayed on the screen to select that operation. (For example, to enter the menu, press the center softkey).
- Press `OFF`/`CLEAR` at any time to return to the previous screen.
- Press and hold `OFF`/`CLEAR` to return to the idle screen.

BEFORE YOU BEGIN

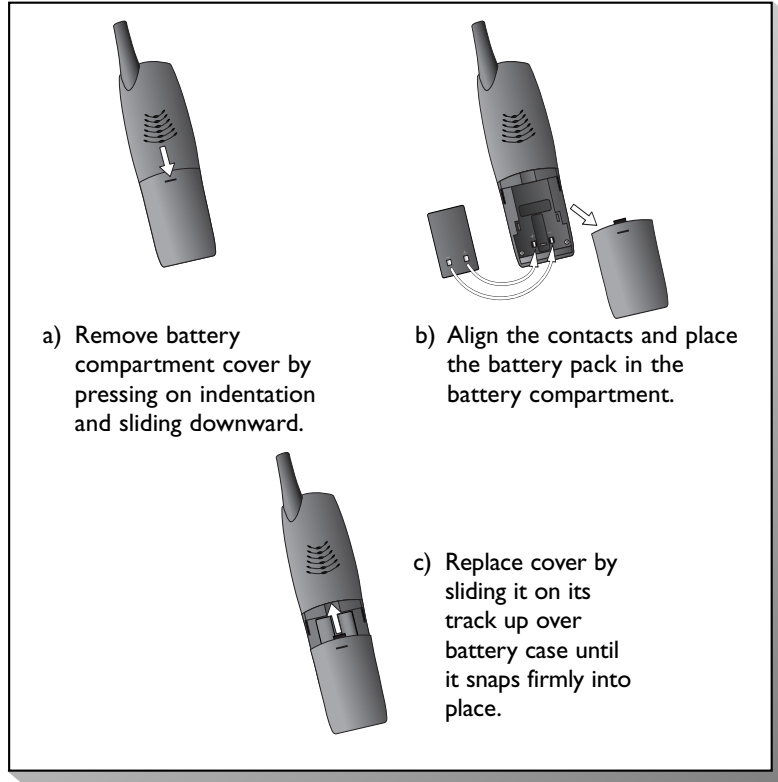
## CHARGE THE BATTERY

### I Install the handset battery pack.

Use only the battery supplied with this handset or AT&T Accessory Battery Model 2401, SKU#91077.

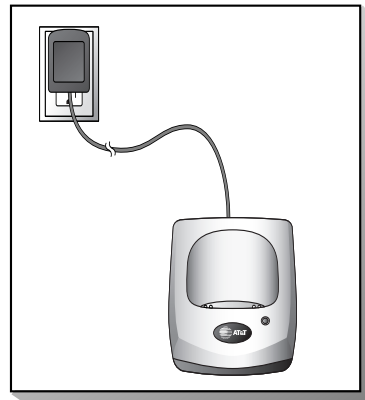
- When you install the battery pack the first time, the handset will display ENTER BASE ID.

2



### Charge the handset battery.

- Place the handset in the remote charging stand. The CHARGING light goes on.
- Charge the battery at least 12 hours. After the first charge, the battery typically charges in only eight hours.



2

## REGISTER THE HANDSET

### To Model 5830/5870/3358/3658B Base Unit

- 1 Make sure to charge the handset battery pack at least 12 hours.
- 2 At the cordless handset, use the softkey to select **NEW**.
- 3 Enter the 15-digit Base Unit ID Code located on the underside of your Model 5830/5870/3358/3658B base.
- 4 Use the softkey to select **OK**. The screen displays **PLEASE WAIT!!**.
- 5 After about 45 seconds, the screen displays **FOUND BASE**. If the handset displays **BASE BUSY TRY LATER**, the base is in use.

### To Model 5840/5845 Base Unit

- 1 Make sure to charge the handset battery pack at least 12 hours.
- 2 At the 5840/5845 corded base, press **MENU**.
- 3 Use **▲** or **▼** to select **DISPLAY BASE-ID**.
- 4 Press **OK**. The base screen will display the 15-digit Base ID code for about 30 seconds, then return to the idle screen. Write down the Base ID code so you can enter it at the handset in **STEP 6** below.
- 5 At the cordless handset, use the softkey to select **NEW**.
- 6 Enter the 15-digit Base ID code.
- 7 Use the softkey to select **OK**. The screen displays **PLEASE WAIT!!**.
- 8 After about 45 seconds, the screen displays **FOUND BASE**. If the handset displays **BASE BUSY TRY LATER**, the base is in use.

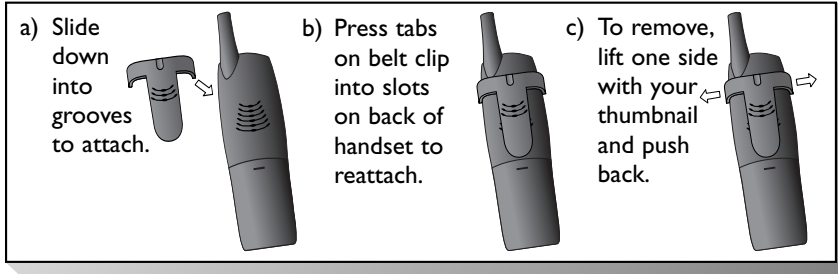
For complete operational instructions,  
please refer to the manual that came  
with your 5830/5840/5845/3358/3658B/5870 telephone

REGISTER THE HANDSET

## INSTALLATION

### Belt Clip

Attach the belt clip (optional).



### Headset

You can use this telephone hands-free when you install any industry standard 2.5 mm headset (purchased separately). For best results use an AT&T 2.5 mm headset.

Plug the headset into the jack located on the left side of the handset (under the small rubber flap). Do not force the connection, but make sure the plug fits securely.



## Battery Life

A fully charged battery provides an average talk time of about eight hours, or standby time of five days.

**NOTE:** Talk time and standby time may vary depending on operating conditions.

## Charge the Handset Battery Pack

- After a low battery indicator, the handset battery needs to be charged.
- Place the handset in the base so the CHARGING light goes on. The battery pack is typically charged in nine hours.
- If you repeatedly get a low battery indicator, even after nine hours of charging, the battery should be replaced. Use only AT&T Battery 2401, SKU# 91077.



**CAUTION:** Charge the battery provided with or identified for use with this product only in accordance with the instructions and limitations specified in the User's Manual, Part I.

