

SANYO

Quick Reference Guide

CAS-D6320/6322/6323

KEEP NEAR THE PHONE

IMPORTANT

Charge the handset battery pack 15 to 20 hours before using your cordless handset for the first time

TOLL-FREE help line: 800-263-2244 (Monday-Friday 9-5 Eastern time)

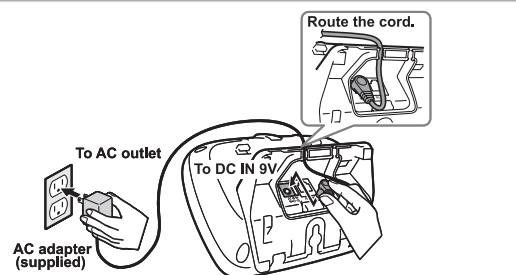
GETTING STARTED

Step 1 Install the Handset Battery Packs

- 1 Remove the cover.
- 2 Connect the battery pack with the correct polarity.
- 3 Replace the cover.

Note: Use ONLY the SANYO rechargeable battery packs supplied with your new phone!

Step 2 Set up the Base



- 1 Plug the yellow-tipped AC adapter cord into the DC IN 9V jack on the back of the base.
- 2 Plug the AC adapter into a 120V AC power outlet.
- 3 Use the black-tipped AC adapter to connect the charger to a 120V AC power outlet.

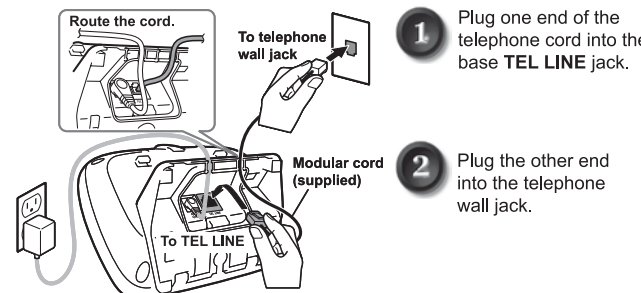
Note: Use ONLY the SANYO AC Adapters supplied with your new phone!

Step 3 Connecting the charger

Place each handset in the base or charger to charge the battery pack. Make sure that the charge LED illuminates.



Step 4 Connect to the Phone Line



- 1 Plug one end of the telephone cord into the base TEL LINE jack.
- 2 Plug the other end into the telephone wall jack.

BASIC FUNCTIONS

MAKING AND RECEIVING CALLS

<To Make a Call >

- 1 Press **TALK/FLASH**
 - 2 Listen for dial tone.
 - 3 Dial the desired number.
- OR —
- Reverse the sequence... **3 1 2**

<To Receive a Call >

- Pick up the handset and press **TALK/FLASH**

<To Hang Up a Call >

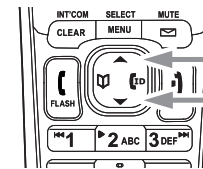
- Press **END** or return the handset to the base or the charger.

ADDITIONAL FEATURES

Adjusting the Ringer, Earpiece and Speaker Volume

Ringer Volume

Handset: With the phone in standby, use **▲** and **▼** to adjust the volume.
Base: While the phone is ringing or in standby, use **volume +** and **volume -** to adjust the ringer or turn it off (4 settings).



Earpiece Volume

While on a call, press **▲** or **▼** to make it louder or softer (6 levels).

Speaker Volume

Handset Speakerphone: While on a call, press **▼** or **▲** to adjust the volume (6 levels).
Base Speaker: While call screening or playing messages, press **volume +** or **volume -** to adjust the volume (10 levels).

Using Caller ID, Call Waiting and Redial list

You must subscribe to the services from your phone company for the following features;

Caller ID List

To open the Caller ID list, press **☎** (on the right side of the four-way key). The phone will show the number of new Caller ID records and the total number of stored records. Use **▲** and **▼** to scroll through the list.

Call Waiting

Press **(FLASH)** to accept the waiting call. There is a short pause, and then you will hear the new caller. To return to the original caller, press **(FLASH)**.

Redialing a Number

You can quickly redial the last five numbers dialed on each handset.

- 1 Press the **REDIAL/PAUSE** to open the redial list.
- 2 Use **▲** and **▼** or **REDIAL/PAUSE** to scroll through the redial list.
- 3 When you find the number you want to dial, press **(FLASH)** or **(☎)**.

Conferencing

A three-way conference call consist of an outside line and two handsets, when the handset is connected to the same base.

- 1 Press **(FLASH)** or **(☎)** to join the call.
- 2 To hang up, return the handset to the cradle or press **(☎)**. The other party will still be connected to the call.

Transferring a Call

You can transfer a call from one handset to another when the handset is connected to the same base.

- 1 During a call, press **CLEAR/INT'COM**.
- 2 Use **▲** or **▼** to select the handset you want to transfer the call to, and then press **MENU/SELECT**. Select ALL to page all other handsets. The call will automatically be placed on hold, and a paging tone sounds. To cancel the transfer, press **(FLASH)** or **(☎)**.
- 3 When another handset accepts the transferred call, you will be disconnected. If you want to rejoin the call, press **(FLASH)** again or **(☎)**.

Answering a Transferred Call

- 1 To answer the page and speak to the transferring handset, press **(FLASH)** or **CLEAR/INT'COM**.
- 2 To accept the call and speak to the caller, press **(FLASH)**.

USING THE ANSWERING SYSTEM

Turning Your Answering System On and Off

	FROM THE BASE
TURNING ON	<ol style="list-style-type: none"> 1) When the phone is in standby, press answer ON/OFF. 2) The system announces "Answering System is on" and plays the current greeting. 3) The message counter LED displays the number of messages stored in memory. If the counter flashes, then you have new messages waiting.
TURNING OFF	<ol style="list-style-type: none"> 1) When the phone is in standby, press answer ON/OFF. 2) The system announces "Answering System is off". 3) The message counter LED is no longer illuminated. If memory is full, the message counter LED always displays FL.
	FROM THE HANDSET
TURNING ON	<ol style="list-style-type: none"> 1) Press MENU/SELECT. 2) Select the ANSW. SETUP menu, and then the ANSWER SETUP submenu. 3) Move the cursor to select ON. 4) Press MENU/SELECT. You will hear a confirmation tone.
TURNING OFF	<ol style="list-style-type: none"> 1) Press MENU/SELECT. 2) Select the ANSW. SETUP menu, and then the ANSWER SETUP submenu. 3) Move the cursor to select OFF. 4) Press MENU/SELECT. You will hear a confirmation tone.

Reviewing Messages

The base **message counter** LED displays the number of messages stored in memory. When you have new messages, the **new message** LED on the handset flashes.

	FROM THE BASE
PLAYING MESSAGES	Press ▶/■ . The system announces the number of new and old messages, plays the message, and then announces the time of day it was received.
REPEATING A MESSAGE	Press ◀◀ once to go to the beginning of the current message. Press ◀◀ repeatedly to go back to a previous message.
SKIPPING A MESSAGE	Press ▶▶ to go to the beginning of the next message.
DELETING A MESSAGE	While a message is playing, press ⊗ . The message is permanently deleted.
DELETING ALL MESSAGES	While the phone is in standby, press ⊗ . When the system asks you to confirm, press ⊗ again. All messages are permanently deleted. Note: New messages cannot be deleted unless they have been played.
ENDING THE MESSAGE REVIEW	Press ▶/■ to stop the message playback and return to standby.
	FROM THE HANDSET
PLAYING MESSAGES	Press ☎/MUTE . The system announces the number of new and old messages, plays the message, and then announces the time of day it was received.
REPEATING A MESSAGE	Press 1 once to go to the beginning of the current message. Press 1 repeatedly to go back to a previous message.
SKIPPING A MESSAGE	Press 3 to go to the beginning of the next message.
DELETING A MESSAGE	While a message is playing, press 4 . The message is permanently deleted.
DELETING ALL MESSAGES	Not available
ENDING THE MESSAGE REVIEW	Press 5 to stop the message playback. Press ☎ to exit the system and return to standby or press 2 to restart the message playback.

HELPLINE SOS 1-800-263-2244
www.sanyo.ca