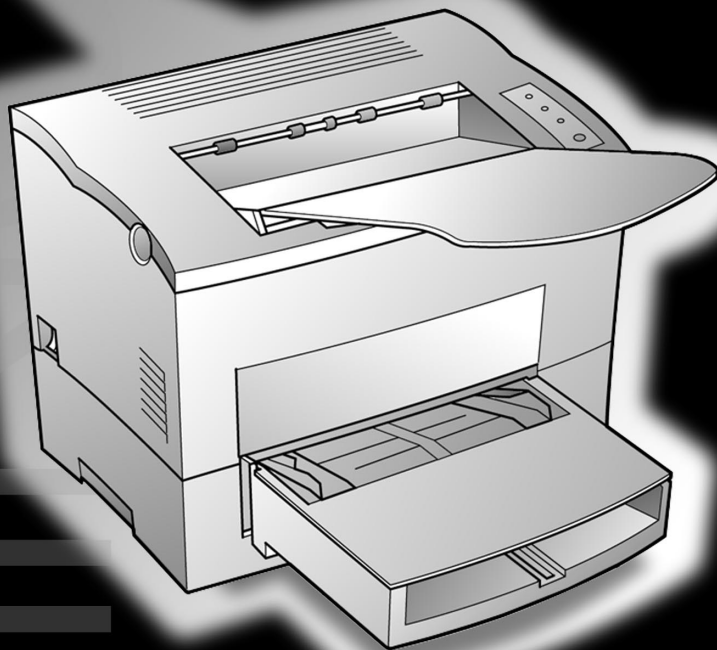


PageWorks 18

*Quick Guide for
Installation and Reference*



MINOLTA

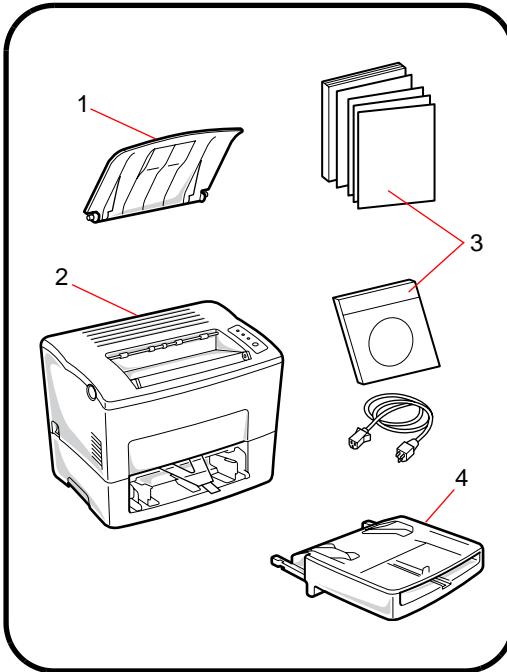
Contents

Step 1	Unpacking the Printer	1
Reference 1	Printer Parts	3
Reference 2	Control Panel	4
Step 2	Attaching the Face-Down Tray and Tray 1	5
Step 3	Loading Paper.....	7
Step 4	Connecting the Power Cord	8
Step 5	Turning the Power On/Off	8
Step 6	Printing a Configuration Page.....	9
Step 7	Connecting the Printer to the Computer (Local Connection).....	10
Step 8	Installing the Printer Driver	11
Reference 3	Troubleshooting	15

Unpacking the Printer

Step 1

Before operating your printer, read the Set-Up Instructions carefully from cover to cover. Use this guide for reference.



1. Face-down tray

2. Printer

3. Accessories

User's Manual

Quick Guide

Warranty card

Registration card

CD-ROM

Power cord

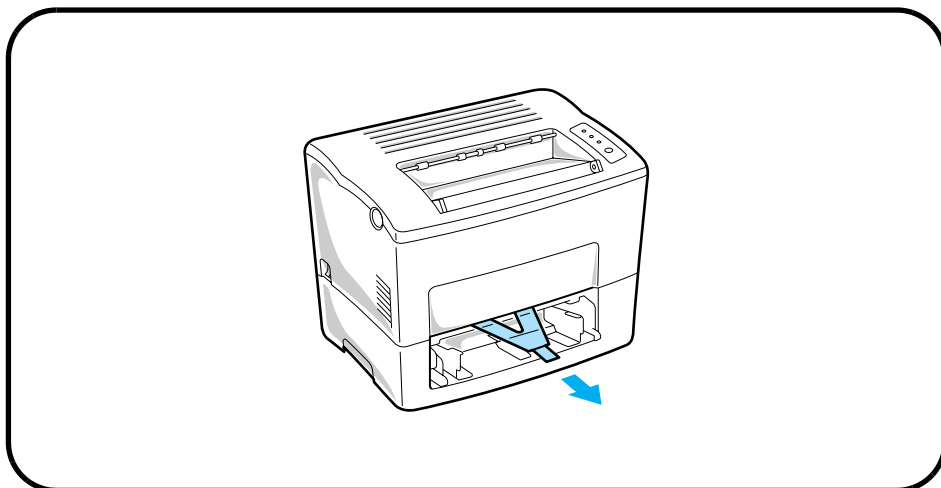
4. Tray 1

1. Take the items and accessories shown above out of the carton.

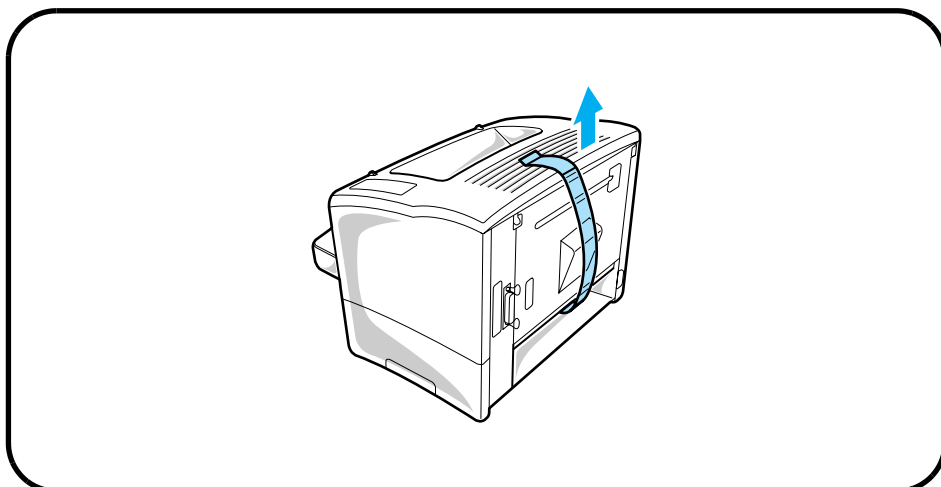
2. Remove the plastic bag and peel off the shipping tape from the printer.

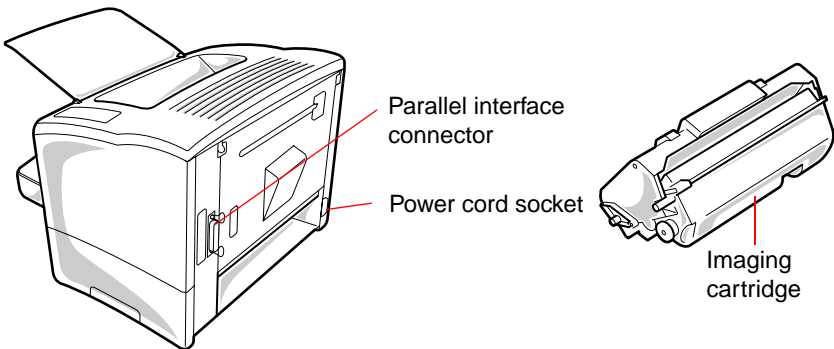
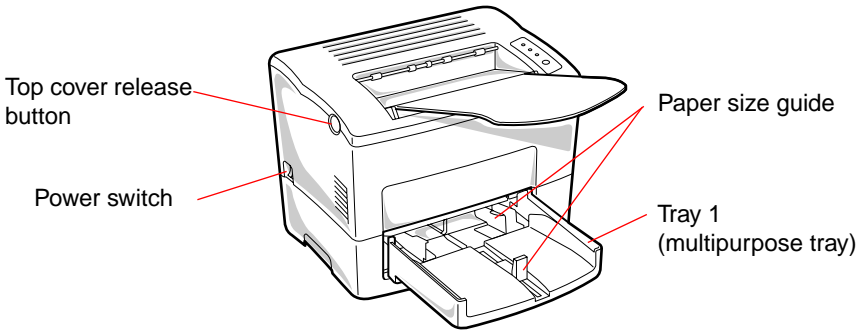
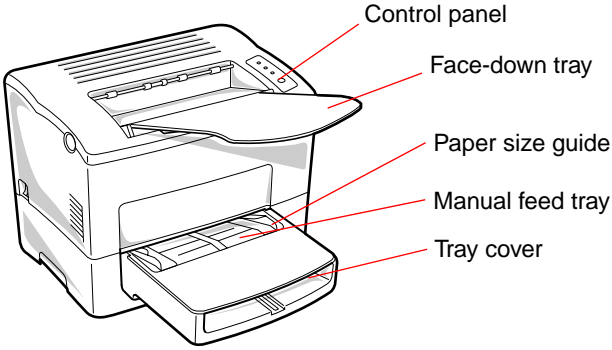
Step 1

3. Pull out the plastic-lead strip from the paper feed inlet.



4. Remove the tape strip from the back of the printer.

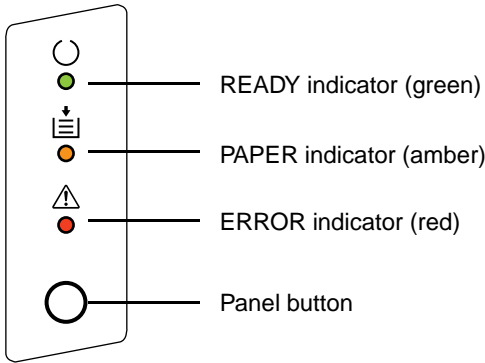










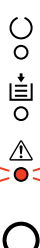


Control Panel

Reference 2

The control panel has three indicator lights and one button.

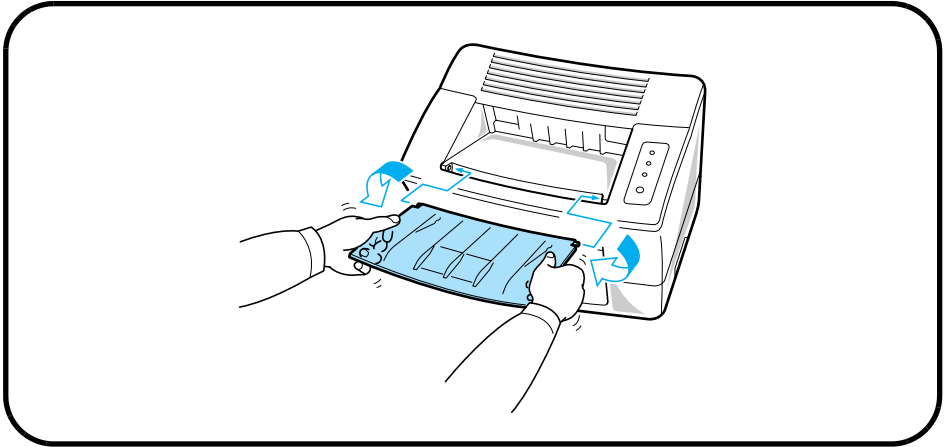


	Printer is ready.		Receiving data via parallel interface; printing in progress.		Power is off.
	The printer is waiting for paper to be loaded manually.		(Slow blinking) Power save mode.		Out of paper. Load more paper to continue printing.
	Paper misfeed. Clear the paper misfeed to continue printing.		Cover open. Close the cover.		Memory overflow/ data received cannot be processed because it is too complex.

Attaching the Face-Down Tray and Tray 1

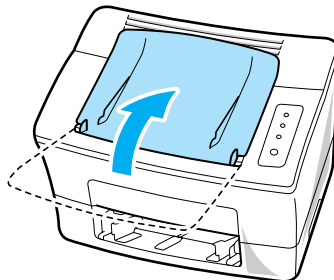
Step 2

1. With both hands, gently bend the face-down tray inwards and insert one of its tabs into its holder on the upper portion of the printer. Continue to bend the face-down tray so that it curves enough for the second tab to fit into its holder and release the tray into position.



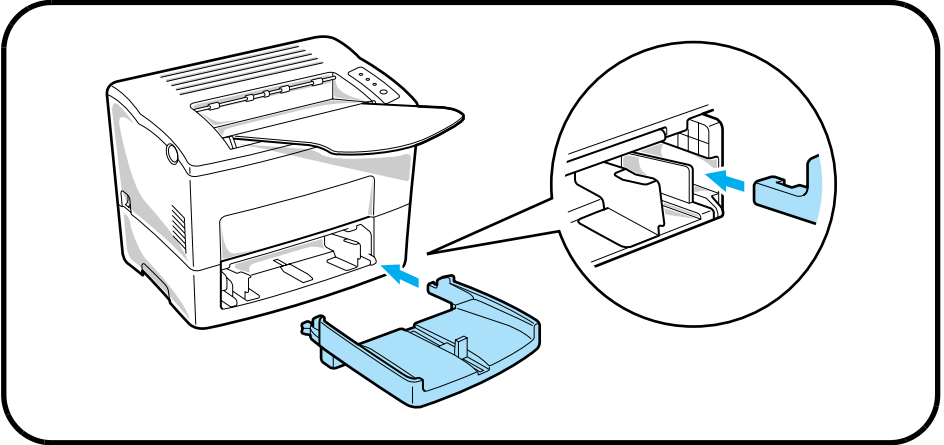
Note

- Be sure to close the face-down tray before opening the top cover to prevent injuries.

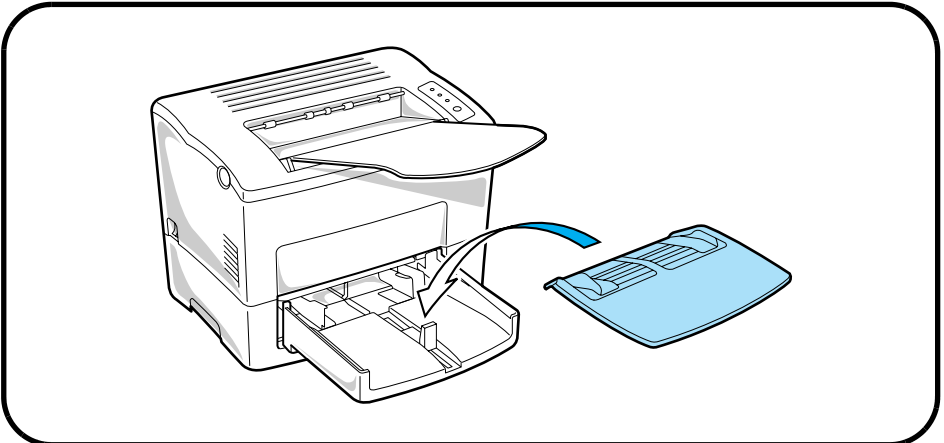


Step 2

2. Using the left and right slots in the printer as guides, gently push Tray 1 until it cannot be inserted any further (as shown in the illustration).



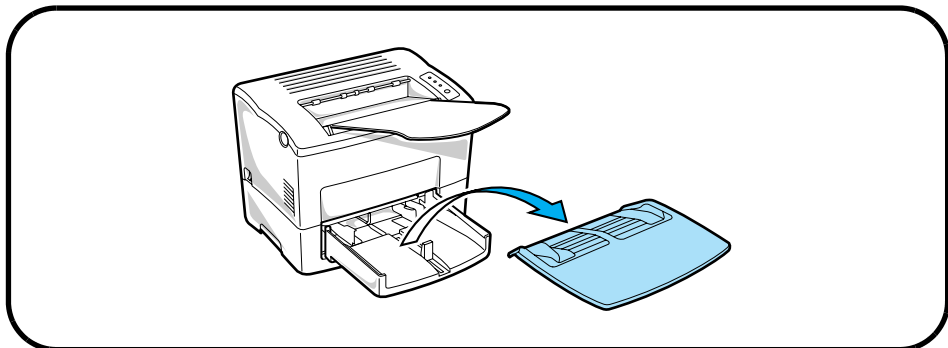
3. Attach the tray cover onto Tray 1.



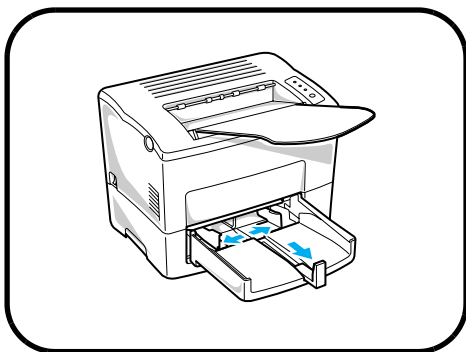
Loading Paper

Step 3

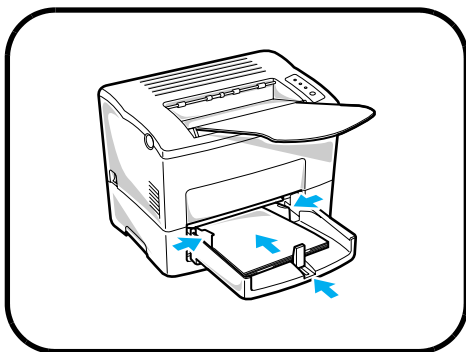
1. Remove the tray cover from Tray 1.



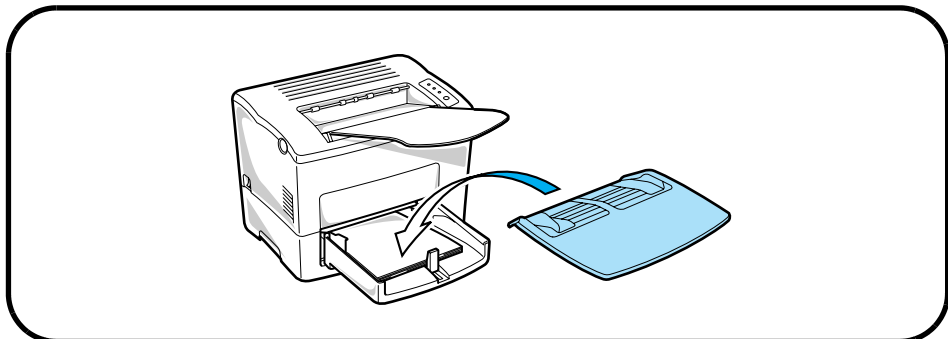
2. Open all three paper size guides.



3. Place the paper stack onto the tray, print-side up. Secure the stack by adjusting the paper size guides.



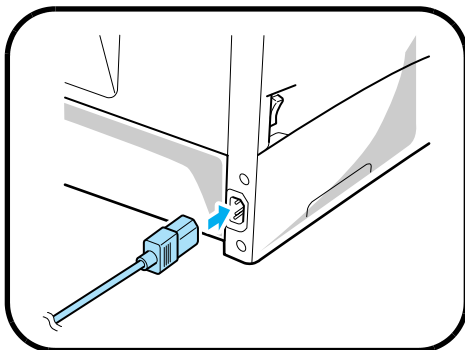
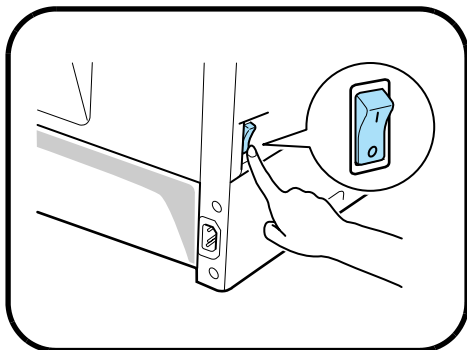
4. Replace the tray cover onto Tray 1.



Connecting the Power Cord

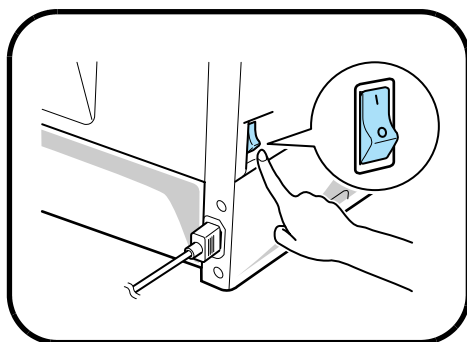
Step 4

1. Make sure that the printer's power switch is in the **O** (Off) position.
2. Connect one end of the power cord that comes with the printer to the power cord socket. Plug the other end into a power outlet.



Turning the Power On/Off

Step 5



Turning the power ON

After connecting the printer to a power outlet, press the power switch to the **I** (On) position. Turning on the printer causes all the indicators on the control panel to light, which indicates that the printer is warming up. In about 23 seconds only the READY indicator remains lit, indicating that the printer is ready to print.

Turning the power OFF

Press the power switch to the **O** (Off) position to turn the printer off.

Note

DO NOT turn the power OFF while:

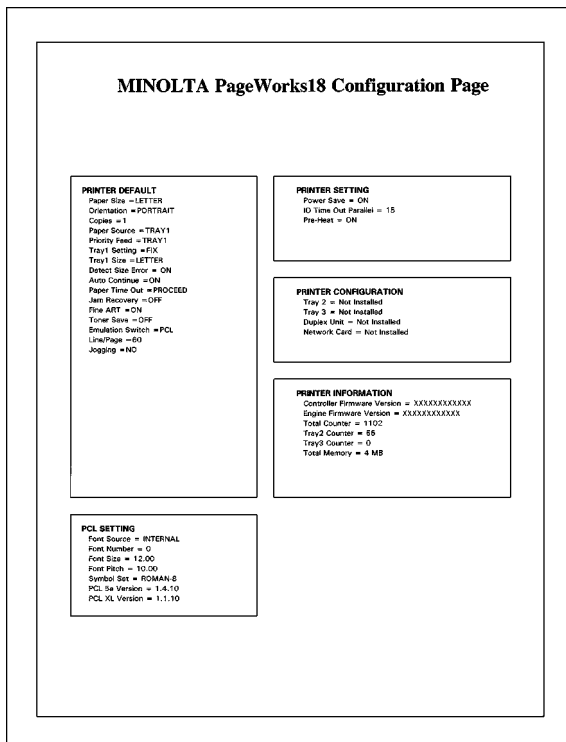
- printing
- the printer is receiving the data from the computer (the indicator on the control panel is blinking)

Printing a Configuration Page

Step 6

1. Turn the printer on.
2. Make sure that paper is loaded into the printer's feeding tray.
3. Make sure that both the PAPER and ERROR indicators are off, and the READY indicator is on.
4. Briefly press the panel button to start printing the Configuration Page.

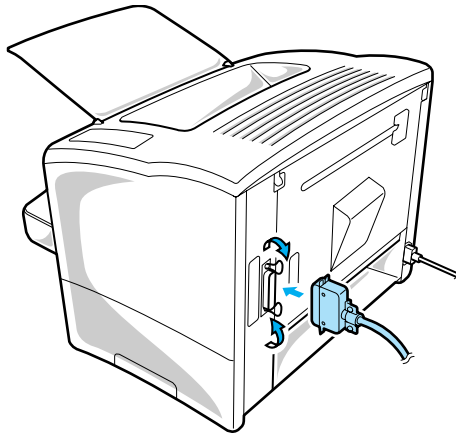
Sample



Connecting the Printer to the Computer (Local Connection)

Step 7

1. Make sure that the printer and the computer you are connecting it to are both turned off.
2. Connect one end of the interface cable to the parallel port of the computer.
3. Connect the other end of the cable to the parallel connector on the back of the printer. Secure the cable using the two clips on the parallel connector.



Installing the Printer Driver

Step 8

Install the printer driver to control the printer from your computer. You can install the printer driver for Windows 95, Windows 98, Windows NT 4.0, Windows 3.1 or MS-DOS from the Printer Driver CD-ROM. Follow the instructions below and for more details, see the User's Manual that came with your printer.

Windows 95/98

We recommend that the printer driver be installed using the CD-ROM's installer. If the driver is installed using plug-and-play, the **Driver** directory on the CD-ROM must be specified.

Note

- When the printer driver is installed using plug-and-play, the Status Display, the Control Panel, the uninstall.exe file, and the Driver Help will not be installed.

Installing from the CD-ROM (Auto Run)

1. Turn on your computer and start up Windows 95 or Windows 98.
2. Insert the **Printer Driver** CD-ROM into your computer's CD-ROM drive.
3. The opening screen is automatically displayed. Click on the **PCL Driver** menu to start the installer.

Note

- The configuration of some computers may prevent the opening screen from appearing automatically. If the screen does not appear, double-click **Install.exe** from the CD-ROM.
- The printer driver must be installed using the CD-ROM's installer. Do not use the Add Printer wizard from the Printers folder. Installation through the Add Printer wizard will prevent the printer from performing properly.
- Do not check **Jogging Tray** when it appears in the installation dialog for registering additional options. This printer does not support jogging tray compatibility.

After installing the printer driver, the **Minolta PageWorks/Pro 18** printer icon appears in the **Printers** folder.

Windows NT 4.0

Installing from the CD-ROM (Auto Run)

1. Turn on your computer and start up Windows NT 4.0.
2. Insert the **Printer Driver** CD-ROM into your computer's CD-ROM drive. In this example, we will assume that **D:** is the name of the CD-ROM drive.
3. The opening screen is automatically displayed. Click on the **PCL Driver** menu to start the installer.

Note

- The configuration of some computers may prevent the opening screen from appearing automatically. If the screen does not appear, double-click **Install.exe** from the CD-ROM.
- The printer driver must be installed using the CD-ROM's installer. Do not use the Add Printer wizard from the Printers folder.
- Do not check **Jogging Tray** when it appears in the installation dialog for registering additional options. This printer does not support jogging tray compatibility.

After installing the printer driver, the **Minolta PageWorks/Pro 18** printer icon appears in the **Printers** folder.

For details, refer to *Chapter 4* of the *User's Manual*.

Windows 3.1

Installing from the CD-ROM

1. Turn on your computer and start up Windows 3.1.
2. Insert the **Printer Driver** CD-ROM into your computer's CD-ROM drive. In this example, we will assume that **D:** is the name of the CD-ROM drive.
3. Double-click the **Control Panel** icon which is located in the **Main** group within the **Program Manager**.
4. In the Control Panel dialog, double-click **Printers** to display the Printers dialog box and then click the **Add>>** button to display the list of printers.
5. Select **Install Unlisted or Updated Printer** and click the **Install...** button.
6. In the Install Driver dialog box, click the **Browse...** button.
7. Browse to the CD-ROM drive and navigate to: **win31drv**.
8. Click **OK** in the Install Driver dialog box.
9. From the List of Printers box, select **Minolta PageWorks/Pro 18**, and then click **OK** to start installation and return to the Printers dialog box.

Note

An error message may appear during installation of the printer driver informing you that a required UNIDRV.DLL file cannot be found. Should this occur, install a UniTool Driver such as HP LaserJet from the **List of Printers** box in the **Printers** dialog. After installing the UniTool Driver, re-install the driver for the PageWorks/Pro 18.

10. Click the **Set As Default Printer** button so that this printer is selected whenever you begin using your Windows software.
11. Click **Close** to finish the installation procedure.

MS-DOS

Installing DOS Printing Utilities

1. Connect your printer to the parallel port of your computer.
2. Turn on your computer and start up DOS.
3. Turn on your printer and make sure it is online.
4. Insert the **Printer Driver** CD-ROM into your computer's CD-ROM drive. In this example, we will assume that **D:** is the name of the CD-ROM drive.
5. Enter the name that has been designated to your CD-ROM drive. For example, if your CD-ROM is designated as "drive D", enter:

```
C:\>D:
```

6. Specify the directory under which the DOS printing utility is located:

```
D:\>cd dosutlty
```

7. Type **install** and press the **Enter** key.

```
D:\dosutlty\install
```

8. The installer will automatically execute and the following message will be displayed:

```
Setup will install DOS Utility in the following directory.
```

```
C:\PP18
```

1. To install to this directory.
2. To install to a different directory.
3. Exit Setup.

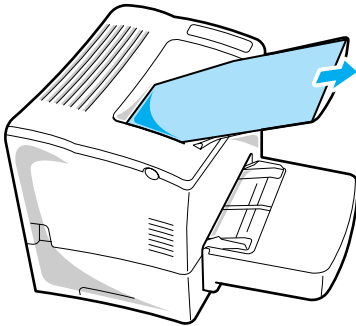
```
Enter a choice : 1
```

Select item **1** under **Enter a choice** to install the utility into the recommended directory or item **2** to install it into a different directory.

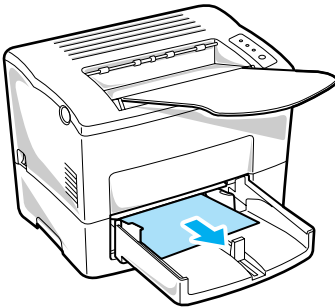
Clearing a Paper Misfeed

Remove the misfed sheet of paper by pulling it in the direction indicated by the arrow.

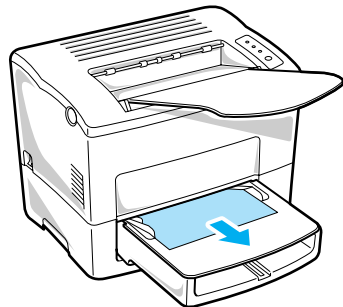
Face-down tray



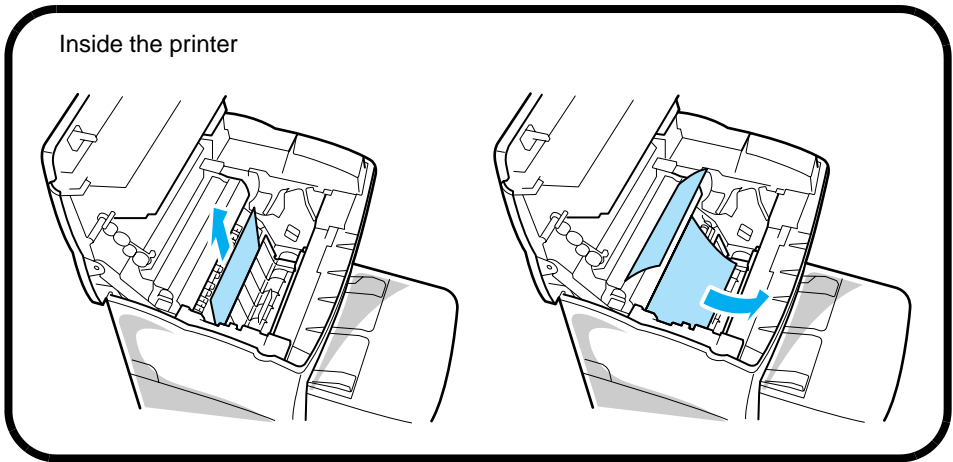
Tray 1



Manual feed tray



Clearing a Paper Misfeed



Caution

- The fusing unit inside the printer can become very hot during operation. Do not touch the area to avoid injury.
- Do not touch the image transfer roller.

Solving Print Quality Problems

- Remove the imaging cartridge and gently shake it a few times to distribute remaining toner.
- Remove the imaging cartridge and check it for damage. Replace the imaging cartridge with a new one if necessary.
- Clean the inside of the printer. (Refer to the User's Manual.)
- Change the toner save setting of the printer driver and try to print again.

For more details, refer to the "Troubleshooting" and "Maintenance" sections of the User's Manual.

No output

- Make sure that the printer is plugged in.
- Make sure that power is turned on.
- Make sure that you are using the correct type of printer cable.
- Make sure that your computer's communication port settings are correct.

For more details, refer to the User's Manual.

MEMO

MEMO



MINOLTA

Copyright
1999 MINOLTA CO., LTD
Printed in Japan

The information contained in this manual is subject to change without notice to incorporate improvements made on the product or products the manual covers.