



X1100 Series All-In-One

User's Guide

- **Learning about the All-In-One**
- **Understanding the software**
- **Using the All-In-One**
- **Maintenance**
- **Troubleshooting**

Edition: May 2003

The following paragraph does not apply to any country where such provisions are inconsistent with local law: LEXMARK INTERNATIONAL, INC., PROVIDES THIS PUBLICATION "AS IS" WITHOUT WARRANTY OF ANY KIND, EITHER EXPRESS OR IMPLIED, INCLUDING, BUT NOT LIMITED TO, THE IMPLIED WARRANTIES OF MERCHANTABILITY OR FITNESS FOR A PARTICULAR PURPOSE. Some states do not allow disclaimer of express or implied warranties in certain transactions; therefore, this statement may not apply to you.

This publication could include technical inaccuracies or typographical errors. Changes are periodically made to the information herein; these changes will be incorporated in later editions. Improvements or changes in the products or the programs described may be made at any time.

Comments about this publication may be addressed to Lexmark International, Inc., Department F95/032-2, 740 West New Circle Road, Lexington, Kentucky 40550, U.S.A. In the United Kingdom and Eire, send to Lexmark International Ltd., Marketing and Services Department, Westhorpe House, Westhorpe, Marlow Bucks SL7 3RQ. Lexmark may use or distribute any of the information you supply in any way it believes appropriate without incurring any obligation to you. You can purchase additional copies of publications related to this product by calling 1-800-553-9727. In the United Kingdom and Eire, call +44 (0)8704 440 044. In other countries, contact your point of purchase.

References in this publication to products, programs, or services do not imply that the manufacturer intends to make these available in all countries in which it operates. Any reference to a product, program, or service is not intended to state or imply that only that product, program, or service may be used. Any functionally equivalent product, program, or service that does not infringe any existing intellectual property right may be used instead. Evaluation and verification of operation in conjunction with other products, programs, or services, except those expressly designated by the manufacturer, are the user's responsibility.

Lexmark and Lexmark with diamond design are trademarks of Lexmark International, Inc., registered in the United States and/or other countries.

Other trademarks are the property of their respective owners.

© 2003 Lexmark International, Inc.

All rights reserved.

UNITED STATES GOVERNMENT RIGHTS

This software and any accompanying documentation provided under this agreement are commercial computer software and documentation developed exclusively at private expense.

Safety information

- Use only the power supply provided with this product or the manufacturer's authorized replacement power supply.
- Connect the power cord to an electrical outlet that is near the product and easily accessible.
- Refer service or repairs, other than those described in the user documentation, to a professional service person.

CAUTION: Do not use the fax feature during a lightning storm. Do not set up this product or make any electrical or cabling connections, such as the power supply cord or telephone, during a lightning storm.

Copyright advisory

It may be illegal to copy certain materials without permission or license, including documents, images, and currency. If you are not sure whether you have permission, seek legal advice.

Contents

- Learning about the All-In-One 1**
 - Setting up the All-In-One 1
 - Understanding the parts of the All-In-One 1
 - Using the control panel 2

- Understanding the software 3**
 - Using the Lexmark All-In-One Center 3
 - Using Print Properties 6
 - Using the Lexmark Solution Center 8
 - Using the Lexmark Photo Editor 9

- Using the All-In-One 10**
 - Printing 10
 - Scanning 13
 - Copying 14
 - Faxing 16

- Maintenance 17**
 - Replacing the print cartridges 17

- Troubleshooting 19**
 - Troubleshooting checklist 19
 - Setup troubleshooting 20
 - Printing troubleshooting 22
 - Scanning, copying, and faxing troubleshooting 24

Removing and reinstalling the software	26
Other help sources	26

***Thank you for purchasing a Lexmark X1100 Series
All-In-One!***

Congratulations on your purchase. The Lexmark™ X1100 Series All-In-One combines the functionality of an inkjet printer, a scanner, a copier, and a fax machine all into a single, multifunction device, making it one of the most exciting products on the market today.

This guide tells you how to perform printing, copying, scanning, and faxing tasks. Also included are sections describing the All-In-One software and troubleshooting information.

Learning about the All-In-One

Setting up the All-In-One

If you have not already done so, follow the steps on the *Setup Sheet* to complete the hardware and software installation. If problems occur during the setup process, see “Setup troubleshooting” on page 20.

Understanding the parts of the All-In-One

Paper guide

Slide next to paper to ensure proper feeding.

Paper support

Lift to load paper into the All-In-One.

Control panel

Use the buttons to operate the All-In-One (see page 2 for details about each of the buttons).

Top cover

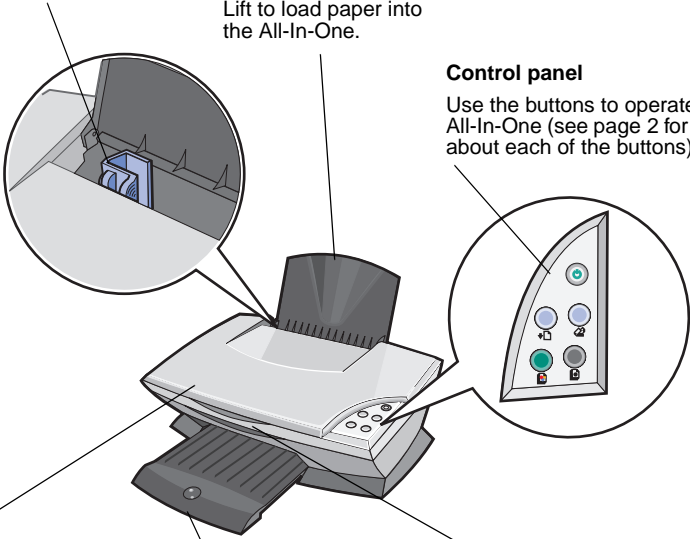
Lift to place an item on the scanner glass.

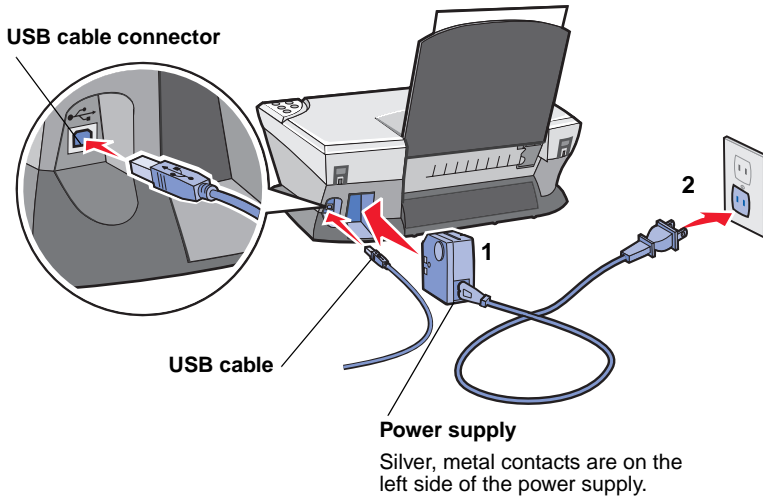
Paper exit tray

Extend to hold paper as it exits the All-In-One.

Scanner unit

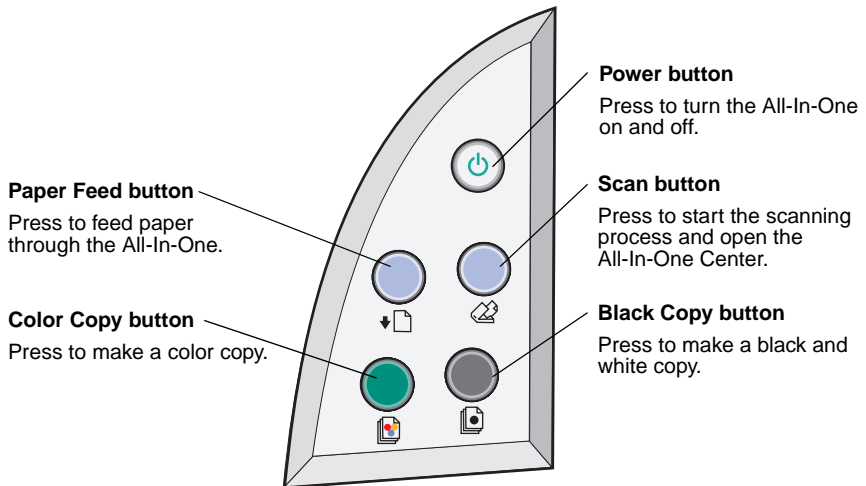
Lift to access the print cartridges.





Using the control panel

The All-In-One has a control panel that lets you scan and copy with the press of a button.



Note: Both the computer and the All-In-One must be turned on to make copies.

Understanding the software

The All-In-One software consists of four main components:

- The Lexmark X1100 Series All-In-One Center (scanning, copying, and faxing)
- Print Properties (printing)
- The Lexmark X1100 Series Solution Center (troubleshooting, maintenance, and cartridge ordering information)
- The Lexmark Photo Editor (editing graphics)

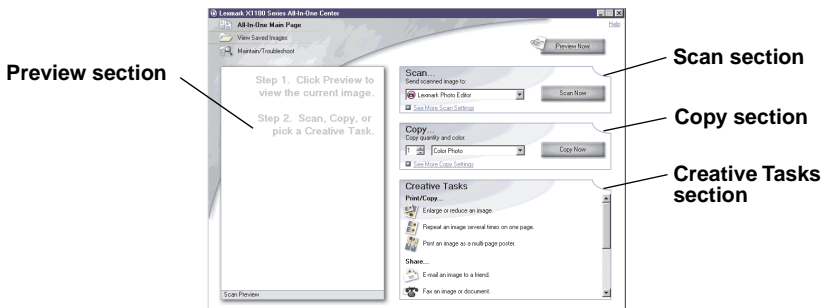
Using the Lexmark All-In-One Center

Use the Lexmark X1100 Series All-In-One Center software to scan, copy, and fax documents. There are three ways to open the All-In-One Center:

- Click **Start** ▶ **Programs** ▶ **Lexmark X1100 Series** ▶ **Lexmark All-In-One Center**.
- Double-click the **Lexmark X1100 Series All-In-One Center** icon on the desktop.
- Press **Scan** on the control panel. For more information about using the control panel, see page 2.

The All-In-One Main Page displays.

All-In-One Center
All-In-One Main Page



The All-In-One Main Page

The All-In-One Main Page consists of four main sections: Scan, Copy, Creative Tasks, and Preview.

From this section:	You can:
Scan	<ul style="list-style-type: none">• Select a program to send the scanned image to.• Choose what type of image is being scanned.• Choose how the scan will be used. <p>Note: Click See More Scan Settings to view all settings.</p>
Copy	<ul style="list-style-type: none">• Select the quantity and color of your copies.• Select a quality setting for your copies.• Adjust the size of the scanned area.• Lighten or darken your copies.• Enlarge or reduce your copies. <p>Note: Click See More Copy Settings to view all settings.</p>
Creative Tasks	Choose from a variety of creative ideas. <ul style="list-style-type: none">• Enlarge or reduce an image.• Repeat an image several times on one page.• Print an image as a multi-page poster.• E-mail an image to a friend.• Fax using your computer's modem.• Save an image on my computer.• Edit text found in a scanned document (OCR).• Modify an image with a photo editor.
Preview section	<ul style="list-style-type: none">• Select a region of the preview image to scan.• View an image of what will be printed or copied.

Note: For more information about the All-In-One Main Page, click the **Help** button located in the upper right corner of the screen.

View Saved Images page

Use the View Saved Images page to perform tasks with images that are saved on the computer. The View Saved Images page consists of three sections.

From this section:	You can:
Open with...	Select a program to send the saved image to.
Print a Copy...	<ul style="list-style-type: none">• Choose the quantity and color of your copies.• Select a quality setting for your copies.• Lighten or darken your copies.• Enlarge or reduce your copies. <p>Note: Click See More Copy Settings to view all settings.</p>
Creative Tasks	Select from a variety of creative ideas. For help, see page 4.

Note: For more information about this page, click the **Help** button located in the upper right corner of the screen.

Maintain/Troubleshoot page

The Maintain/Troubleshoot page provides you with direct links to the Lexmark Solution Center. Choose from these topics:

- Maintain or fix quality problems
- Troubleshoot All-In-One problems
- Device status and ink levels
- More printing ideas and how to's
- Contact information
- Advanced (skin, voice, and communication options)
- View the software version and copyright information

For more information about the Lexmark Solution Center, see page 8.

Note: For more information about this page, click the **Help** button located in the upper right corner of the screen.

Using Print Properties

Print Properties is the software that controls the All-In-One printing function. You can change the settings in Print Properties based on the type of project you want to create. You can open Print Properties from almost any program:

- 1 From the program File menu, click **Print**.
- 2 In the Print dialog box, click the **Properties**, **Preferences**, **Options**, or **Setup** button (depending on the program).

The Print Properties screen displays.

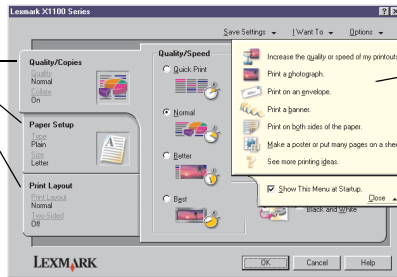
Note: Some programs open Print Properties differently.

Print Properties

Quality Copies tab and I Want To menu

Print Properties tabs

Use the Quality/Copies, Paper Setup, and Print Layout tabs to select the print settings.



I Want To menu

Select one of the projects from the menu to help print photos, banners, envelopes, posters, and more.

The I Want To menu

The I Want To menu displays when you open Print Properties. It contains a variety of task wizards to help you select the correct print settings for your project. Close the menu for a full view of the Print Properties dialog box.

Print Properties tabs

All of the print settings are on the three main tabs of the Print Properties software: Quality/Copies, Paper Setup, and Print Layout.

From this tab:	You can change these settings:
Quality/Copies	Quality/Speed — Select a Quality/Speed setting. Multiple Copies — Customize how the All-In-One prints several copies of a single print job: collated or normal. Print Color Images in Black and White — Select this to print color images in black and white.
Paper Setup	Type — Select the type of paper you are using. Paper Size — Select the size of the paper you are using. Orientation — Select how you want the document oriented on the printed page: portrait or landscape.
Print Layout	Layout — Select the layout you want to print. Duplexing — Select this when you want to print on both sides of the paper.

Note: For additional information about these settings, right-click a setting on the screen, and then select the **What's This?** item.

Save Settings menu

From the Save Settings menu, you can name and save the current Print Properties settings for future use. You can save up to five custom settings.

Options menu

Use the Options menu to make changes to the Quality Options, Layout Options, and Printing Status Options settings. For more information on these settings, open the tab dialog box from the menu, and then click the **Help** button on the dialog box.

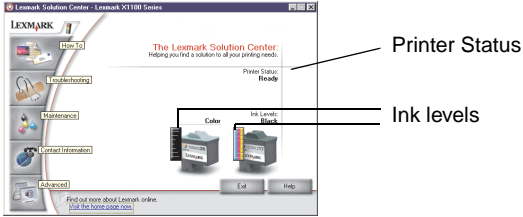
The Options menu also provides you with direct links to different parts of the Lexmark Solution Center (see page 8), as well as software version information.

Using the Lexmark Solution Center

The Lexmark X1100 Series Solution Center is a valuable information resource. To open the Lexmark Solution Center, click **Start ▶ Programs ▶ Lexmark X1100 Series ▶ Lexmark X1100 Series Solution Center**.

The Printer Status tab displays.

Lexmark Solution Center
Printer Status tab



The Lexmark Solution Center consists of six tabs: Printer Status, How To, Troubleshooting, Maintenance, Contact Information, and Advanced.

From this tab:	You can:
Printer Status (Main dialog box)	<ul style="list-style-type: none"> View the status of the All-In-One. For example, while printing, the status is Busy Printing. View the ink levels of the print cartridges.
How To	Learn how to: <ul style="list-style-type: none"> Scan, copy, fax, and print. Find and change settings. Use basic features. Print projects such as banners and iron-on transfers.
Troubleshooting	<ul style="list-style-type: none"> Learn tips about the current status. Solve All-In-One problems.
Maintenance	<ul style="list-style-type: none"> Install a new print cartridge. <p>Note: Wait until scanning is complete before installing new cartridges.</p> <ul style="list-style-type: none"> View shopping options for new cartridges. Print a test page. Clean to fix horizontal streaks. Align to fix blurry edges. Troubleshoot other ink problems. Remove Japanese postcard residue.

From this tab:	You can:
Contact Information	<ul style="list-style-type: none"> • Learn how to contact Lexmark by phone, e-mail, or on the World Wide Web.
Advanced	<ul style="list-style-type: none"> • Change the appearance of the Printing Status window and turn printing voice notification on or off. • Obtain software version information.

Note: For more information, click the **Help** button located in the lower right corner of the screen.

Using the Lexmark Photo Editor

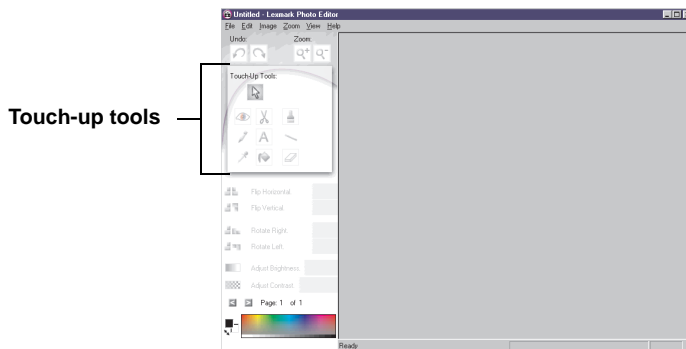
Use the Lexmark Photo Editor software to edit graphics. To open the Lexmark Photo Editor, click **Start ▶ Programs ▶ Lexmark X1100 Series ▶ Lexmark Photo Editor**.

The Lexmark Photo Editor displays.

Use the touch-up tools to edit your graphic.

Move your pointer over the tool for a description.

Lexmark Photo Editor



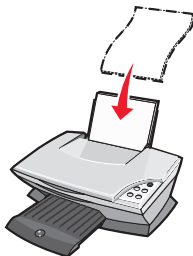
Using the All-In-One

The following sections give you everything you need to know for basic printing, scanning, copying, and faxing.

Printing

The Print Properties I Want To menu (see page 6) provides you with printing wizards to help you complete tasks such as printing banners, photographs, or posters.

- 1 Depending on what you want to print, load the appropriate type of paper into the All-In-One. Place the paper against the right side of the paper support with the print side facing you. Make sure you select the paper size for your document. For help, see page 12.



Load up to:

- 100 sheets of plain paper
- 25 sheets of labels
- 25 iron-on transfers
- 25 sheets of photo/glossy paper
- 10 transparencies
- 20 sheets of banner paper
- 10 sheets of greeting card stock
- 10 Hagaki cards
- 10 envelopes

Note: Since transparencies and photos require more drying time, we recommend that you remove each transparency or photo as it exits and allow to dry to avoid ink smearing.

Note: Do not load envelopes with:

- Holes, perforations, cutouts, or deep embossing.
- Metal clasps, string ties, or metal folding bars.
- Exposed flap adhesive.

- 2 Squeeze and slide the paper guide to the left edge of the paper.

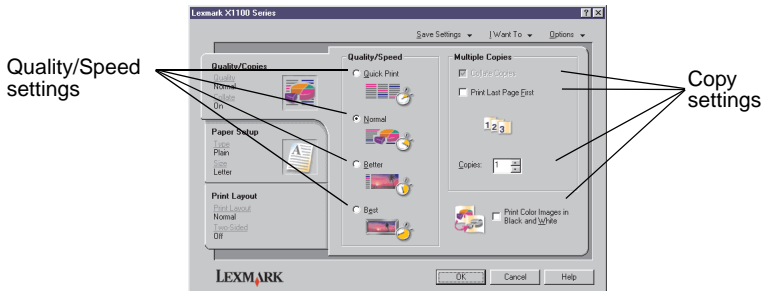


- 3 Make sure the All-In-One is turned on.
- 4 Click **File** ► **Print**.
- 5 In the Print dialog box, click the **Properties**, **Preferences**, **Options**, or **Setup** button (depending on the program).

The Print Properties dialog box displays.

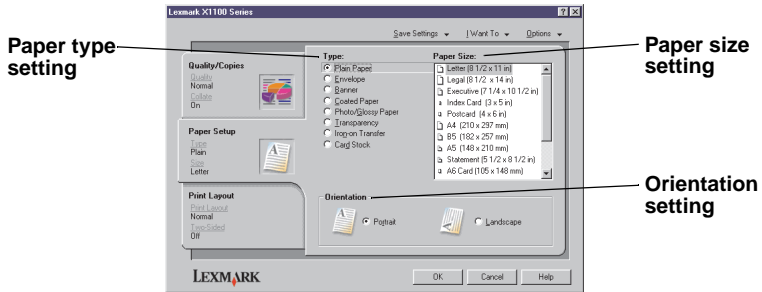
- 6 If the printing task you want to perform is on the **I Want To** menu, click it, and then follow the instructions on the computer screen; otherwise, click **Close** at the bottom of the menu.
- 7 From the Quality/Copies tab, select the quality, speed, and copy settings.

To see details about a setting, right-click a setting on the screen, and then select the **What's This?** item.



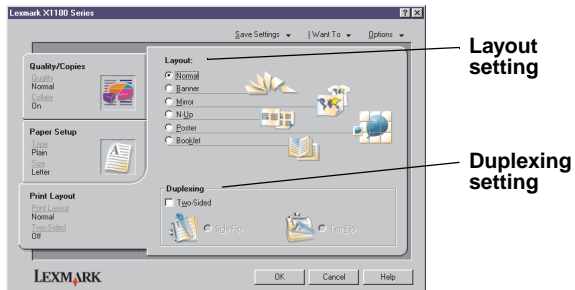
- 8 From the Paper Setup tab, select the paper type, paper size, and orientation.

To see details about a setting, right-click a setting on the screen, and then select the **What's This?** item.



- 9 From the Print Layout tab, select the layout and duplexing settings for the type of document you are printing.

To see details about a setting, right-click a setting on the screen, and then select the **What's This?** item.

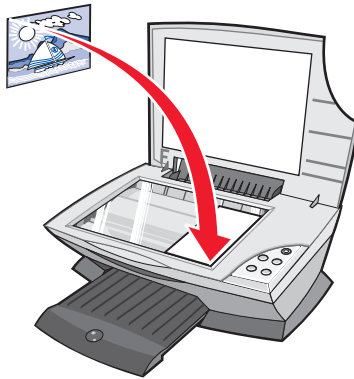


- 10 Once you have applied all the settings you want in Print Properties, click **OK** at the bottom of the screen to return to the Print dialog box.
- 11 Click **Print** to complete your task.

Scanning

The following steps show you how to scan and save images.

- 1 Open the top cover of the All-In-One.
- 2 Place the item you want to scan face down on the glass. Make sure the upper left corner of the front of the item aligns with the arrow.



- 3 Close the top cover.
- 4 Open the Lexmark All-In-One Center (see page 3).
The All-In-One Main Page displays.
- 5 Click the **Preview Now** button located in the upper right corner of the All-In-One Main Page.
An image of the scanned item displays in the preview section.
- 6 Click and drag to select a specific area of the preview image to scan.
- 7 Click **See More Scan Settings** to review and change the scan settings.
- 8 Select your scan settings.

From the Send scanned image to: drop-down menu, select a program to send the scanned image to, or click the **Creative Tasks** section to display a list of projects.



Preview section

See a preview of the image, and select an area to be scanned.

- 9 If you are sending the scanned image to a software program, click **Scan Now** to complete the scan. If you are using the **Creative Tasks** section, follow the instructions on the computer screen.

For a list of the Creative Tasks available from the All-In-One Main Page, see page 4.

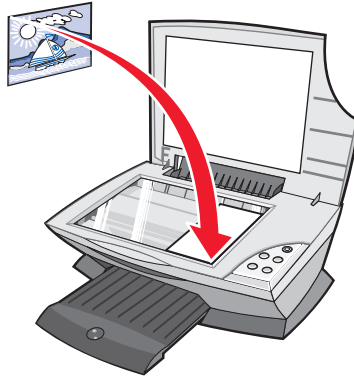
Copying

Note: You can make a quick color or black and white copy. Press **Color Copy** or **Black Copy** on the control panel.

To make black and white, gray, or color copies:

- 1 Open the top cover of the All-In-One.

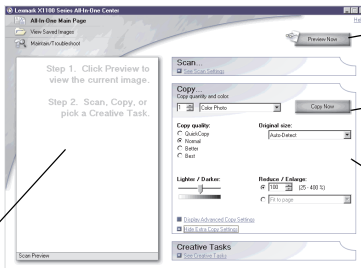
- 2 Place the item you want to copy face down on the glass. Make sure the upper left corner of the front of the item aligns with the arrow.



- 3 Close the top cover.
- 4 Open the Lexmark All-In-One Center (see page 3).
The All-In-One Main Page displays.

- 5 Click **See More Copy Settings** to review and change the copy settings.

The All-In-One Copy section expands:



Preview Now button

Click to see a preview of the image.

Copy Now button

Click to copy your image.

Copy settings

Adjust the settings for the copy.

Preview section

See a preview of the image, and select an area to be copied.

- 6 Select your copy settings.

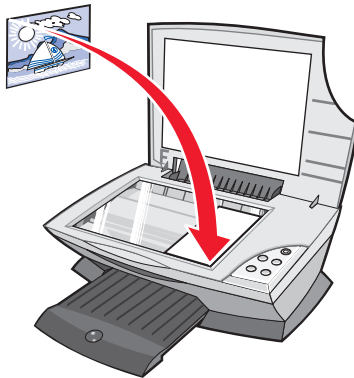
Note: You may want to reduce or enlarge the image.

- 7 Click **Copy Now**.

Faxing

The following steps lead you through sending a fax using the computer modem.

- 1 Open the top cover.
- 2 Place the item you want to fax face down on the glass. Make sure the upper left corner of the front of the item aligns with the arrow.



- 3 Close the top cover.
- 4 Open the Lexmark All-In-One Center (see page 3).
- 5 From the **Creative Tasks** section of the All-In-One Main Page, click **Fax an image**.
- 6 Follow the instructions on the computer screen.

Maintenance

Replacing the print cartridges

The Lexmark X1100 Series has been designed to print using the following cartridges.

Item:	Part number:
Standard yield black cartridge	16
Standard yield color cartridge	26
Moderate use black cartridge	17
Moderate use color cartridge	27

Note: You can print using only the color cartridge, or with both a color cartridge and a black cartridge.

For information about ordering supplies, see page 8.

Before you install new or replacement print cartridges, remove the used cartridges.

- 1 Make sure the All-In-One is on.
- 2 Lift the scanner unit until the scanner support keeps it open.
The print cartridge carrier moves and stops at the loading position unless the All-In-One is busy.
- 3 Squeeze the tabs on the cartridge lids, and then lift the lids.
- 4 Remove the old cartridges. Store them in an air-tight container or dispose of them.
- 5 If you are installing new cartridges, remove the stickers and transparent tape from the bottom of the cartridges.

Warning: Do *not* touch the gold contact area on the cartridges.

- 6 Insert the new cartridge. Make sure the color print cartridge is secure in the left carrier and then *snap* the lid closed.

If you are installing a black print cartridge, make sure that it is secure in the right carrier, and then *snap* the lid closed.

- 7 Lift the scanner unit and push the scanner support back while lowering the scanner unit until it is completely closed.

Lexmark's All-In-One warranty does not cover repair of failures or damage caused by a refilled cartridge. We do not recommend use of refilled cartridges. Refilling cartridges can affect print quality and cause damage to the All-In-One. For best results, use Lexmark supplies.

Troubleshooting

This section helps you solve problems you may have with the All-In-One. Additional troubleshooting information is available in the Lexmark Solution Center. For help accessing the Lexmark Solution Center, see page 8.

Troubleshooting checklist

Before you try to solve the problem, check the following:

- Is the power supply firmly attached to the All-In-One and an electrical outlet?
- Are both the computer and All-In-One on?
- Is the USB cable securely attached to the computer and the All-In-One?
- Did you remove the sticker and transparent tape from the print cartridge? For help, refer to the setup documentation.
- Is the color cartridge secure in the left carrier?
Is the black print cartridge secure in the right carrier, if you installed both?
- Is the paper loaded correctly? Make sure you do not force the paper into the printer.
- Did you install the printer software correctly? For help, refer to the setup documentation.
- Is the Lexmark X1100 Series set as the default? To check, click **Start ▶ Settings ▶ Printers**. If not, you need to remove and then reinstall the software. For help, see page 26.

Problem:	Go to page:
Power light does not come on	20
Alignment page does not print	21
When I insert the All-In-One software CD, nothing happens	21
All-In-One is not communicating with the computer	21
Installation appears incomplete	21
All-In-One prints slowly	22
Print is too dark or smudged	22
Vertical lines are jagged or edges are not smooth	23
White lines appear in graphics or solid black areas	23
All-In-One has a paper jam	23
Scanning was not successful	24
Scanning or using a scanned image with a software program takes a long time or freezes the computer	24
Edge of the copy does not print	24
Copy button on the control panel does not work	25
Fax function does not work	25

Setup troubleshooting

Use this section to solve problems you may have during setup.

Power light does not come on

- 1** Check the power supply connections.
- 2** Press **Power** on the control panel.

Alignment page does not print

- 1** Make sure you remove the sticker and transparent tape from the print cartridges. For help installing print cartridges, refer to the setup documentation.
- 2** Make sure the color cartridge is secure in the left carrier.
Make sure the black print cartridge is secure in the right carrier if you installed both.
- 3** Make sure you loaded the paper correctly and did not force the paper into the All-In-One.

When I insert the All-In-One software CD, nothing happens

From the Desktop, double-click the **My Computer** icon, and then double-click the **CD-ROM drive** icon.

All-In-One is not communicating with the computer

- 1** Disconnect and reconnect both ends of the USB cable. For help, refer to the setup documentation.
- 2** Unplug the All-In-One from the electrical wall outlet, reconnect the power supply, and then press **Power**. For help, refer to the setup documentation.
- 3** Restart the computer. If the problem continues, remove and then reinstall the software. For help, see page 26.

Installation appears incomplete

The software may not be installed properly. Try the following:

- 1** Right-click the **My computer** icon.
Windows XP users, click **Start** to access the **My computer** icon.
- 2** Click **Properties**.

- 3 If you are using Windows 98 or Windows Me, click the **Device Manager** tab.

If you are using Windows 2000 or Windows XP, select the **Hardware** tab, and then click **Device Manager**.

- 4 Look for the Other Devices category. If there are any Lexmark devices shown here, highlight them and then press the **Delete** key.

Note: The Other Devices category displays only when unknown devices are present. Do not delete any Lexmark items unless they are present under the Other Devices category.

- 5 Insert the CD, and install the software again. Do not restart the computer. For help, refer to the setup documentation.

Printing troubleshooting

All-In-One prints slowly

- 1 Close all programs not in use. The memory resources may be low.
- 2 Make sure the Print Properties Quality/Speed setting is set on **Normal** or **Quick Print**. For help, see page 7.
- 3 Try printing a smaller file. If the memory resources are too low, you may not be able to print larger files. Consider purchasing more memory.

Note: Photographs typically have a larger file size. Try lowering the scanning resolution.

Print is too dark or smudged

- 1 Remove the paper as it exits. Let the ink dry before handling.
- 2 Adjust the Quality/Speed setting in Print Properties or in the All-In-One Center. For help, see page 6 or page 4.

The **Better** or **Best** Quality/Speed setting may cause smearing if used with plain paper. Try using **Normal**.

- 3 Open the Lexmark Solution Center. For help, see page 8.
- 4 From the Maintenance tab, click **Clean to fix horizontal streaks**.

Vertical lines are jagged or edges are not smooth

- 1 Adjust the Quality/Speed setting in Print Properties. For help, see page 7. For best print quality, select **Better** or **Best**.
- 2 Align the print cartridges. To align the print cartridges:
 - a Open the Lexmark Solution Center. For help, see page 8.
 - b From the Maintenance tab, click **Align to fix blurry edges**.

White lines appear in graphics or solid black areas

Clean the print cartridge nozzles. Going long periods without using the All-In-One can cause the print cartridge nozzles to become clogged. To clean the cartridge nozzles:

- 1 Open the Lexmark Solution Center. For help, see page 8.
- 2 From the Maintenance tab, click **Clean to fix horizontal streaks**.

All-In-One has a paper jam

- 1 Follow the instructions on the screen for clearing the paper jam.
- 2 Make sure you are using paper designed for an inkjet printer. For a list of recommended papers, see page 10.
- 3 Make sure you are correctly loading the paper. For help, see page 10.
- 4 Make sure the paper guide is against the left edge of the paper. For help, see page 11.

Scanning, copying, and faxing troubleshooting

Scanning was not successful

The software may not be installed properly. Follow the instructions for “All-In-One is not communicating with the computer” on page 21.

Scanning or using a scanned image with a software program takes a long time or freezes the computer

Lower the scanning resolution. Scanning resolution is much different than printing resolution and is generally set much lower. To change the scanning resolution:

- 1** Open the Lexmark All-In-One Center. For help, see page 3.
- 2** From the Scan section, click **See More Scan Settings**.
- 3** Click **Display Advanced Scan Settings**.
- 4** From the Scan tab of Advanced Scan Settings, enter a lower scan resolution.

Edge of the copy does not print

- Make sure the original is properly oriented on the glass. For help, see page 13.
- Make sure the area you want to copy is not larger than the printable area of the page. Apply the **Fit-to-page** feature. To apply the Fit-to-page feature:
 - 1** Open the Lexmark All-In-One Center. For help, see page 3.
 - 2** From the Copy section, click **See More Copy Settings**.
 - 3** From the Reduce/Enlarge section, click the second button, and then select **Fit to page** from the corresponding drop-down menu.
 - 4** Copy your document again.

Copy button on the control panel does not work

- Make sure the computer is on. The computer must be on in order for the All-In-One to work.
- Make sure you properly installed the software. For help, refer to the setup documentation. The software must be installed for the copier to work.

Fax function does not work

- Make sure the computer and the All-In-One are on.
- Make sure the computer is connected to a phone line. A phone connection is required for faxing to function.
- The memory may be full. Wait until the faxes in memory have been sent, and then send the current fax again.

Removing and reinstalling the software

If the All-In-One software is not functioning properly or a communications error message displays when you try to use the All-In-One, you may need to remove and then reinstall the printer software.

- 1 From the desktop, click **Start ▶ Programs ▶ Lexmark X1100 Series ▶ Uninstall Lexmark X1100 Series**.

Note: If Uninstall is not an option on the menu, see “All-In-One is not communicating with the computer” on page 21.

- 2 Follow the instructions on the computer screen to remove the All-In-One software.
- 3 Restart the computer before reinstalling the software.
- 4 Insert the CD and follow the instructions on the computer screen to install the software. For help, refer to the setup documentation.

Other help sources

If the preceding solutions do not solve the problem with your All-In-One:

- Refer to the Lexmark Solution Center software for more troubleshooting information:
 - 1 Click **Start ▶ Programs ▶ Lexmark X1100 Series ▶ Lexmark X1100 Series Solution Center**.
 - 2 Click the **Troubleshooting** tab on the left side of the screen.
- Visit our Web site at <http://support.lexmark.com/> for help.

Electronic emission notices

Federal Communications Commission (FCC) compliance information statement

The Lexmark 3100 Series 4476-K01 has been tested and found to comply with the limits for a Class B digital device, pursuant to Part 15 of the FCC Rules.

Operation is subject to the following two conditions: (1) this device may not cause harmful interference, and (2) this device must accept any interference received, including interference that may cause undesired operation.

The FCC Class B limits are designed to provide reasonable protection against harmful interference in a residential installation. This equipment generates, uses, and can radiate radio frequency energy and, if not installed and used in accordance with the instructions, may cause harmful interference to radio communications. However, there is no guarantee that interference will not occur in a particular installation. If this equipment does cause harmful interference to radio or television reception, which can be determined by turning the equipment off and on, the user is encouraged to try to correct the interference by one or more of the following measures:

- Reorient or relocate the receiving antenna.
- Increase the separation between the equipment and receiver.
- Connect the equipment into an outlet on a circuit different from that to which the receiver is connected.
- Consult your point of purchase or service representative for additional suggestions.

The manufacturer is not responsible for any radio or television interference caused by using other than recommended cables or by unauthorized changes or modifications to this equipment. Unauthorized changes or modifications could void the user's authority to operate this equipment.

Note: To assure compliance with FCC regulations on electromagnetic interference for

a Class B computing device, use a properly shielded and grounded cable such as Lexmark part number 1329605 for parallel attach or 12A2405 for USB attach. Use of a substitute cable not properly shielded and grounded may result in a violation of FCC regulations.

Any questions regarding this compliance information statement should be directed to:

Director of Lexmark Technology & Services
Lexmark International, Inc.
740 West New Circle Road
Lexington, KY 40550
(859) 232-3000

Industry Canada compliance statement

This Class B digital apparatus meets all requirements of the Canadian Interference-Causing Equipment Regulations.

Avis de conformité aux normes d'Industrie Canada

Cet appareil numérique de la classe B respecte toutes les exigences du Règlement sur le matériel brouilleur du Canada.

European Community (EC) directives conformity

This product is in conformity with the protection requirements of EC Council directives 89/336/EEC and 73/23/EEC on the approximation and harmonization of the laws of the Member States relating to electromagnetic compatibility and safety of electrical equipment designed for use within certain voltage limits.

A declaration of conformity with the requirements of the directives has been signed by the Director of Manufacturing and Technical Support, Lexmark International, S.A., Boigny, France.

This product satisfies the Class B limits of EN 55022 and safety requirements of EN 60950.

The United Kingdom Telecommunications Act 1984

This apparatus is approved under the approval number NS/G/1234/J/100003 for the indirect connections to the public telecommunications systems in the United Kingdom.

Japanese VCCI notice

この装置は、情報処理装置等電波障害自主規制協議会（VCCI）の基準に基づくクラスB情報技術装置です。この装置は、家庭環境で使用することを目的としています。この装置がラジオやテレビジョン受信機に近接して使用されると、受信障害を引き起こすことがあります。

取扱説明書に従って正しい取り扱いをしてください。

ENERGY STAR

The EPA ENERGY STAR Office Equipment program is a partnership effort with office equipment manufacturers to promote the introduction of energy-efficient products and to reduce air pollution caused by power generation.

Companies participating in this program introduce products that power down when they are not being used. This feature will cut the energy used by up to 50 percent. Lexmark is proud to be a participant in this program.

As an ENERGY STAR Partner, Lexmark International, Inc. has determined that this product meets the ENERGY STAR guidelines for energy efficiency.

Index

A

Advanced tab 9
All-In-One Center, *see*
Lexmark All-In-One
Center
All-In-One Main Page
Copy section 4
Creative Tasks section
4
Preview section 4
Scan section 4
All-In-One status 8

B

banner
printing 6
banner paper 10
banners
printing 6
black and white, printing
in 7
Black Copy button 2
both sides, printing on,
see duplexing

C

card stock 10
cartridges
viewing ink levels of 8
Color Copy button 2
Contact Information tab 9
control panel 2
copies 7
copy settings 4
copying 14
copyright advisory ii

D

duplexing 7

E

edition information ii
electrical emission
statement 27
emission statement 27
envelopes
printing 6

F

faxing 16
FCC statement 27

G

glossy paper 10

H

hardware setup
software setup 1
How To tab 8

I

I Want To
change quality settings
6
change speed settings
6
print a banner 6
print a photo 6
print a poster 6
print an envelope 6
print on both sides of
the paper 6
see more printing
ideas 6

I Want To menu 6
ink cartridges
viewing ink levels of 8
ink levels
viewing 8
inkjet paper 10
iron-on transfers 10
printing 6

L

labels 10
Lexmark All-In-One
Center 3
opening 3
using 3
Lexmark Solution Center
8
Advanced tab 9
Contact Information
tab 9
How To tab 8
Maintenance tab 8
opening 8
Printer Status tab 8
Troubleshooting tab 8
loading paper 10

M

Maintain/Troubleshoot
page 5
Maintenance tab 8
multiple copies 7

O

orientation, selecting 7

P

paper

- acceptable types of 10
- loading 10
- paper exit tray 1
- Paper Feed button 2
- paper guide
 - adjusting 11
- Paper Setup tab 7
- parts of your All-In-One 1
- photo paper 10
- photos
 - printing 6
 - scanning 13
- poor quality printing 22
- posters
 - printing 6
- Power button 2
- Preview Now button 13
- Preview section
 - Preview Now button 13
 - Print/Copy preview 4
 - Scan preview 4
- print cartridges
 - viewing ink levels of 8
- Print Layout tab 7
- Print Properties 6
 - I Want To menu 6
 - opening 6
 - Options menu 7
 - Paper Setup tab 7
 - Print Layout tab 7
 - Quality/Copies tab 7
 - Save Settings menu 7
 - tabs 7
- printing 10
 - banners 6
 - envelopes 6
 - photos 6
 - posters 6
- Printing Status window
 - changing appearance of 9

Q

- Quality/Copies tab 7

R

- reinstalling software 26
- removing software 26

S

- safety information ii
- Save Settings menu 7
- saved images
 - viewing 5
- Scan button 2
- scan settings 4
- scanner unit 1
- scanning 13
 - placing an item on the glass 13
- settings, saving for future use 7
- setup 1
- setup troubleshooting 20
- software
 - reinstalling 26
 - removing 26
- sound, *see* voice notification
- Status tab 8

T

- top cover 1
- transparencies 10
- troubleshooting
 - copying problems 24
 - faxing problems 24
 - scanning problems 24
 - setup problems 20
- troubleshooting checklist 19
- Troubleshooting tab 8

V

- View Saved Images page 5
 - Open with... section 5
 - Print a Copy...section 5
- voice notification
 - turning on or off 9

