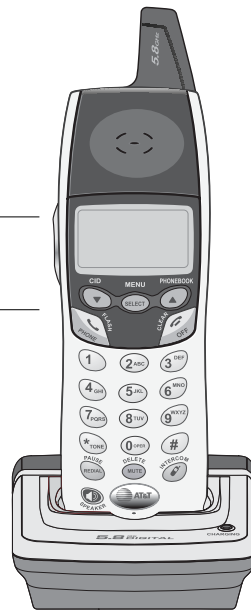




User Manual (Part 2)

5.8 GHz Expansion Handset E560-I

**For use with AT&T
model E5633/E5630/E5600**



You must charge the battery and register the handset before use.



See pages 2-3 for easy instructions.

For customer service or product information, visit our web site at **www.telephones.att.com** or call **1-800-222-3111**.

Please also read **Important Product Information** Enclosed in product package.

Table of contents

Before you begin.....	1
Parts checklist	1
Battery & charging installation	2
Registering the handset.....	3
Belt clip & optional headset.....	4
Quick reference guide.....	5

Before you begin

This cordless telephone operates with the maximum power allowed by the Federal Communications Commission (FCC). Even so, this handset and base can communicate over only a certain distance — which can vary with the locations of the base and handset, the weather, and the construction of your home or office.

If you receive a call while you are out of range, the handset might not ring — or if it does ring, the call might not connect when you press

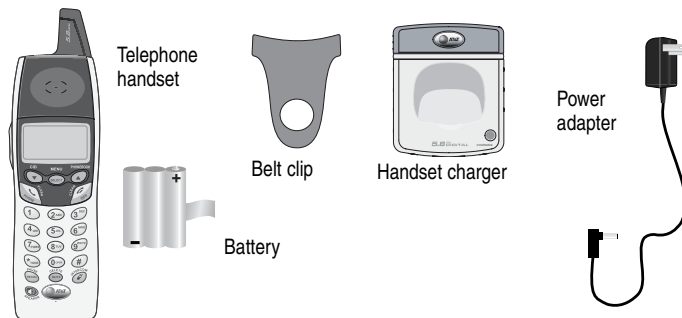
PHONE. Move closer to the base, then press **PHONE** to answer the call.

If you move out of range during a phone conversation, you might hear noise or interference. To improve reception, move closer to the base.

If you move out of range without pressing OFF, your phone will be left off the hook. To hang up properly, walk back toward the telephone base, periodically pressing **OFF** until the call is disconnected.

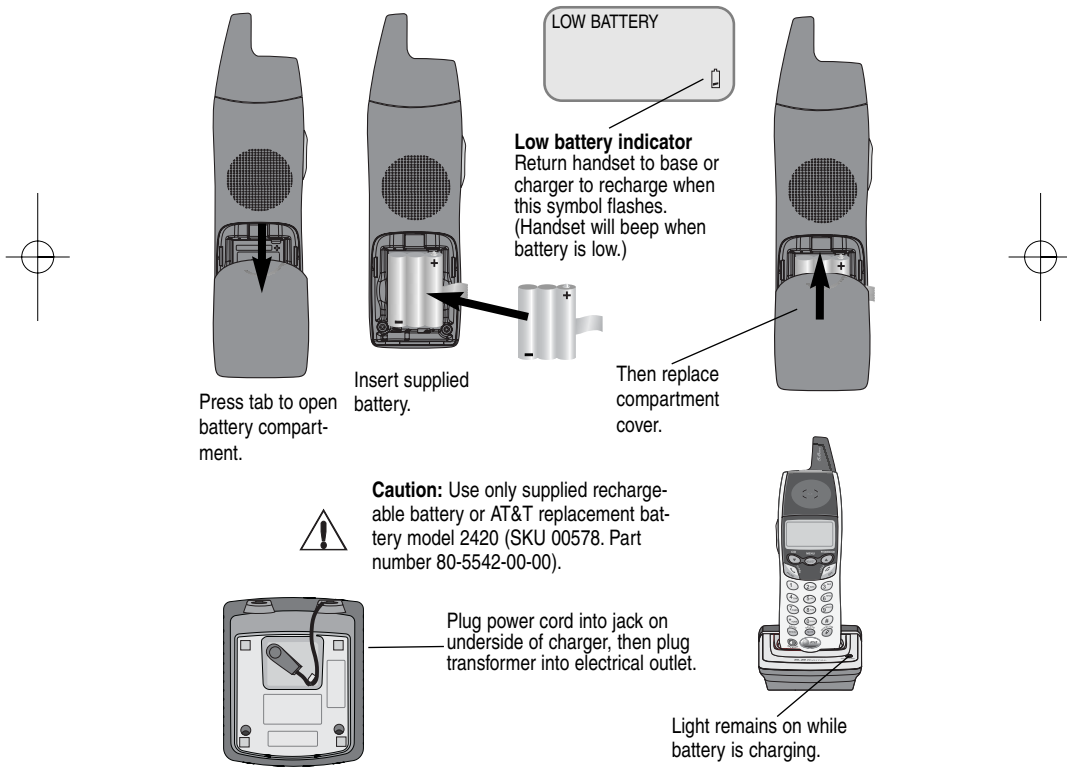
Parts checklist

Remember to save your sales receipt and original packaging in case you ever need to ship your telephone for warranty service. Check to make sure the telephone package includes the following:



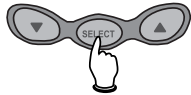
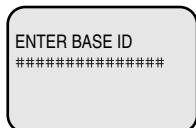
Battery & charger installation

After installation, place the handset in the charger and allow the battery to charge for 12 hours before use. You can keep the battery charged by returning the handset to the charger after each use. When battery power is fully depleted, a full recharge takes about 10 hours. Average talk time on a fully charged battery is about eight hours depending on environmental conditions, standby time is approximately four days.



Registering the handset

Enter base ID, then press **SELECT**.



Before using a new E560-I handset, you must register it with the E5633 / E5630 / E5600 base. During registration, you must enter the 15-digit ID number of the telephone base. The Base ID is located on the bottom of the base unit.

Follow the instructions provided with your new handset to register it for use with your telephone.

The handset provided with your telephone is automatically registered as Handset 1. Additional handsets will be assigned numbers in the order they are registered (2, 3 or 4). You can register a maximum of four handsets.



Handset 1 Handset 2 Handset 3 Handset 4



Belt clip & optional headset

Install belt clip as shown below if desired.

For hands-free telephone conversations, you can use any industry standard 2.5 mm headset (purchased separately). For best results use an AT&T 2.5 mm headset.



Quick reference guide

For complete instructions, please refer to the manual provided with your E5633, E5630 or E5600 telephone.

Handset

▼ CID

Press to scroll down in menus. Press when phone is not in use to display Caller ID information. While entering names, press to move the cursor to the left.

Phone/Flash

Press to begin a call, then dial a number. During a call, press to receive an incoming call, if Call Waiting is activated.

Redial/Pause

Press to view redial memory. While entering numbers, press and hold to insert a dialing pause.

Speaker

Press to activate handset speakerphone. Press again to resume normal handset use (earpiece).

Feature menu

> shows highlighted item



Feature Menu

Phone book
Call Log
Ringer Volume
Ringer Tone
Key Tone
Language
Clear MSG WAIT
Dial Type

Select/Menu

Press to display menu, or to select highlighted item from menu.

▲ PHONE BOOK

Press to scroll up in menus. Press when phone is not in use to display phone book entries. While entering names, press to advance cursor.

Off/Clear

During a call, press to hang up. While using menus, press to cancel an operation, back up to the previous menu, or exit the menu display.

Mute/Delete

Press to mute microphone. While reviewing call log, press and hold to clear Caller ID log.

Intercom

Press to initiate an intercom conversation or forward a call.



www.telephones.att.com

Copyright © 2004 Advanced American Telephones. All Rights Reserved.
AT&T and the Globe Design are trademarks of AT&T Corp.,
licensed to Advanced American Telephones. Printed in China. Issue 1 AT&T 12/04.
91-000183-010-000