



*User Manual (Part 2)*

## **2.4 GHz Expansion Handset E250**

**For use with AT&T models  
E2555 • E2525 • E2600B**



**You must charge  
batteries and register the hand-  
set before use.**

**STOP!**

**See pages 2-3  
for easy instructions.**

For customer service or product  
information, visit our web site at  
**[www.telephones.att.com](http://www.telephones.att.com)**  
or call **1-800-222-3111**.

Please also read  
***Important Product Information***  
Enclosed in product package.

## Table of contents

|                                      |   |
|--------------------------------------|---|
| Before you begin.....                | 1 |
| Parts checklist.....                 | 1 |
| Battery installation & charging..... | 2 |
| Registering the handset.....         | 3 |
| Belt clip & optional headset.....    | 4 |
| Quick reference guide.....           | 5 |

## Before you begin

This cordless telephone operates with the maximum power allowed by the Federal Communications Commission (FCC). Even so, this handset and base can communicate over only a certain distance — which can vary with the locations of the base and handset, the weather, and the construction of your home or office. For best performance, keep the base antenna fully upright.

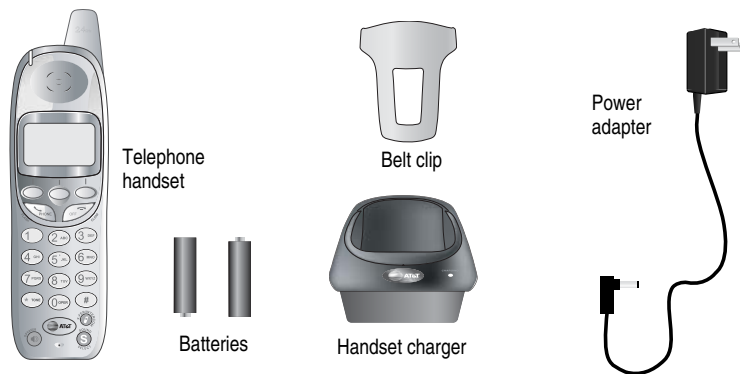
**If you receive a call while you are out of range**, the handset might not ring — or if it does ring, the call might not connect when you press **PHONE**. Move closer to the base, then press **PHONE** to answer the call.

**If you move out of range during a phone conversation**, you might hear noise or interference. To improve reception, move closer to the base.

**If you move out of range without pressing OFF**, your phone will be left “off the hook.” To hang up properly, walk back toward the telephone base, periodically pressing **OFF** until the call is disconnected.

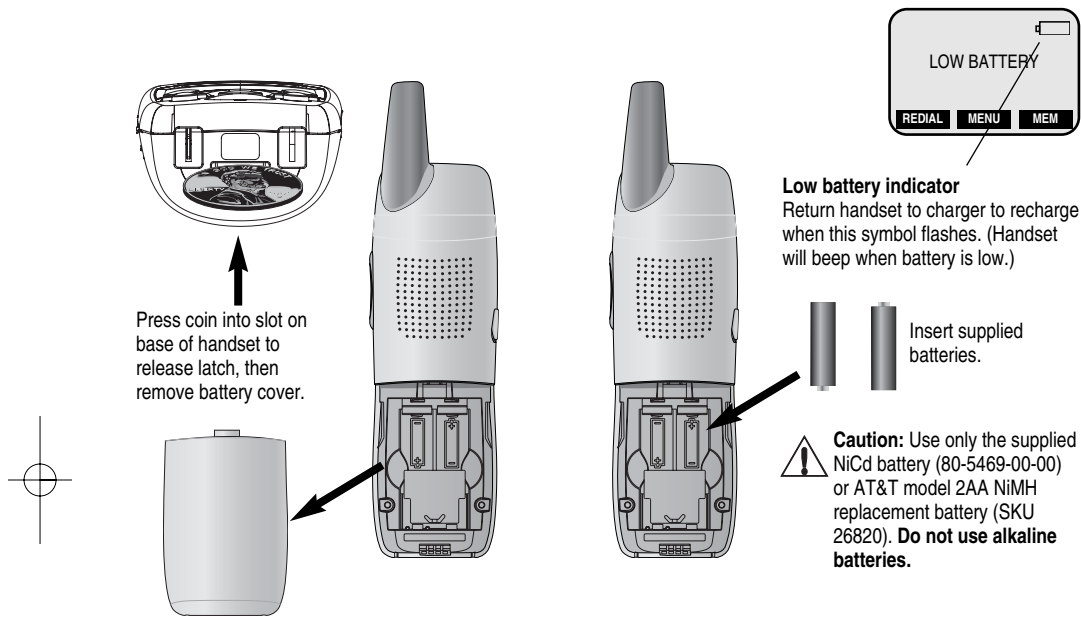
## Parts checklist

Remember to save your sales receipt and original packaging in case you ever need to ship your telephone for warranty service. Check to make sure the telephone package includes the following:

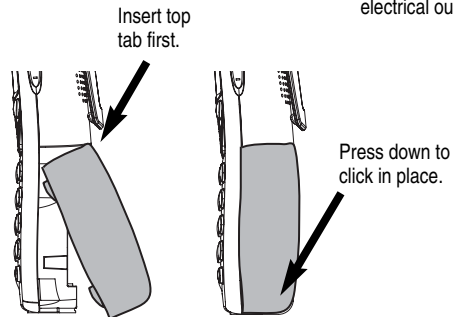


## Battery installation & charging

Install batteries as shown, then place the handset in the charger for at least 8 hours before use. You can keep batteries charged by returning the handset to the charger after each use. When battery power is fully depleted, a full recharge takes about 6 hours.



### To replace battery cover



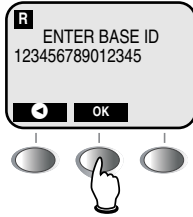
Plug power cord into jack on underside of charger, then plug transformer into electrical outlet.

Place handset in charger to charge for 8 hours before first use.

Light remains on while batteries are charging.

## Registering the handset

Enter base ID, then press **OK**.



Before using your new handset, you must register it with the base. During registration, you must enter the 15-digit ID number of the telephone base. To find this number, go to the base, press **MENU**, scroll down to select **DISPLAY BASE ID**, then press **OK**.

The handset provided with your telephone is automatically registered as Handset 1. Additional handsets will be assigned numbers in the order they are registered (2, 3, 4, etc.) up to a maximum of eight.



Handset 1



Handset 2



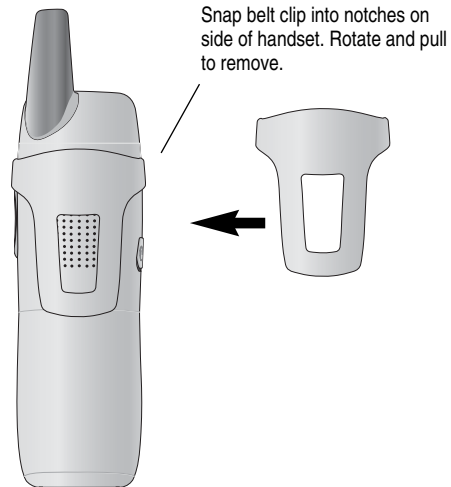
Handset 3



## Belt clip & optional headset

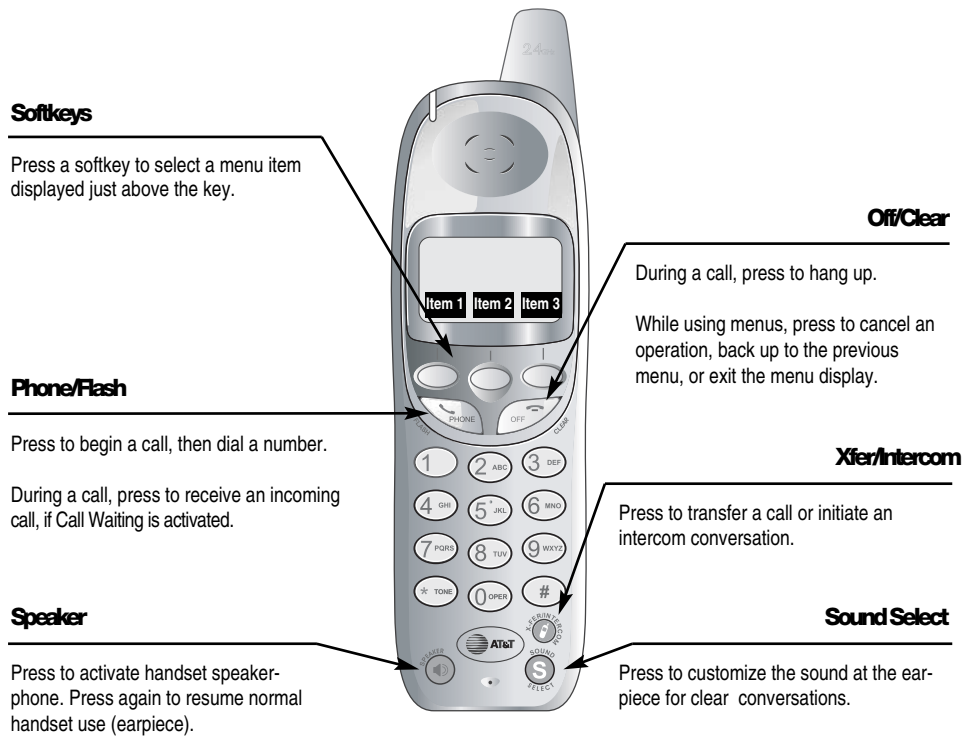
Install belt clip as shown below if desired.

For hands-free telephone conversations, you can use any industry standard 2.5 mm headset (purchased separately). For best results use an AT&T 2.5 mm headset.

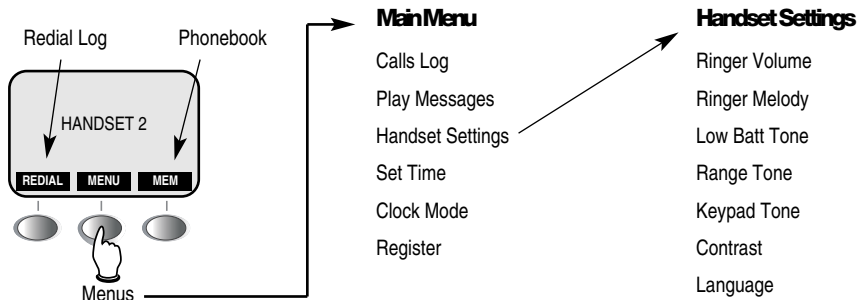


## Quick reference guide

For complete instructions, please refer to the manual provided with your telephone.



## Screen menus





[www.telephones.att.com](http://www.telephones.att.com)

Copyright © 2004 Advanced American Telephones. All Rights Reserved.  
AT&T and the Globe Design are trademarks of AT&T Corp.,  
licensed to Advanced American Telephones. Printed in China. Issue 2 AT&T 06/04.  
91-5661-20-00