

The PRO that handles heavy workflow.



Production Printer/Copier/Scanner. Everything it takes to keep pace with rising production print demands. 92 ppm input/output. 750,000 page monthly duty cycle. Auto finishing options, including tri-folding and booklet-making. And powerful software that makes it all look easy.



bizhub PRO 920
proudly joins
the bizhub
family – named
2005 Product
Line of the Year
by Buyers
Laboratory Inc.

The essentials of imaging

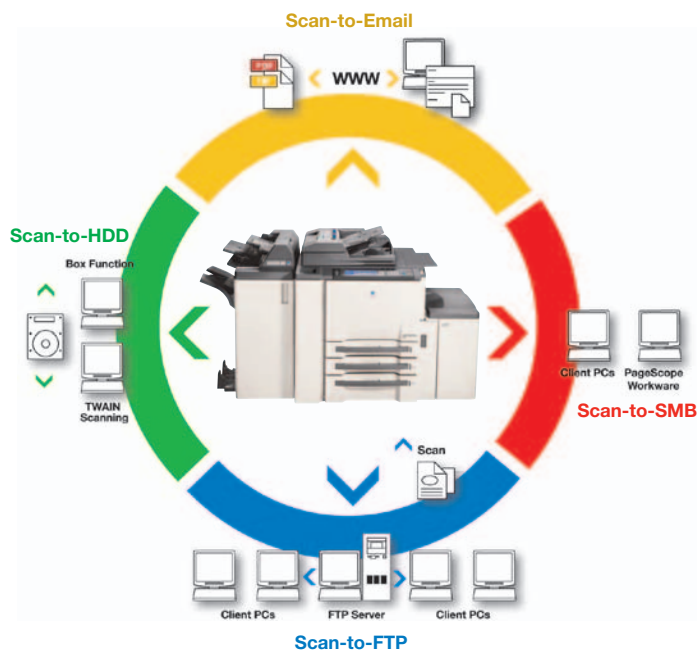


The advantage of a true professional.

You can't compromise with production print demands – and in speed, reliability and performance, your bizhub PRO 920 is a true production professional. With 92 ppm output in both printing and copying, you'll have the speed and convenience to handle everything from walk-up copy jobs to full production printing in central corporate reprographic and print-for-pay environments. You'll be able to print on heavy paper stock, up to 110 lb. index. Print OHP transparencies and tab pages. Even connect two bizhub PRO 920's for Tandem Copy* or Tandem Print*, with blazing output speed of up to 184 ppm.

Increase throughput, speed production.

Expanding traffic. Rising volume. Greater challenges in networking and control. To keep pace, you need speed – but you need more. Documents scanned, distributed, printed and finished, all from a central resource. With powerful management software and smooth-running reliability.



The flexibility of a full-function scanner.

Along with printing and copying, the bizhub PRO 920 can give you scanning power to distribute documents quickly and cost-efficiently. The optional IC-203 Image Controller gives you powerful scanning in PDF and TIFF formats to bring information into your workflow faster. You can Scan-to-Email with LDAP capability*, attaching documents to Email messages for distribution. You can also Scan-to-FTP, saving files on your FTP server for sharing or archiving. Scan-to-SMB, sending files directly to desktop PCs. Even Scan-to-HDD, storing documents in secure digital mailboxes on your bizhub PRO 920's 40 GB hard drive for "pull-scan" access. Information flows more quickly, to more destinations – and everyone stays in the loop.

Scan-to-Email: send documents as Email attachments.

Scan-to-FTP: move files to network FTP servers.

Scan-to-SMB: send files directly to desktop PCs.

Scan-to-HDD: store files in secure digital mailboxes.

The reliability of a powerful workhorse.

Production print demands keep rising. That's why the bizhub PRO 920 is rated for up to 750,000 impressions per month – all you need to handle your busy production workflow. The design is professional, the construction robust: a precision paper path, rugged smooth-sliding metal paper drawers, and high-speed Automatic Document Feeder with 100-sheet capacity and sheet-through scanning technology to keep documents moving. You'll also have toner yield of 66,000 impressions, to help reduce your total cost of ownership.



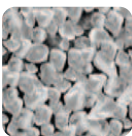
Heavy-duty universal paper trays can hold 5-1/2" x 8-1/2" to 11" x 17" media in weights up to 110 lb. index (200 gsm).

The confidence of a partner in quality.

Along with speeding your workflow, the bizhub PRO 920 can improve your image. Konica Minolta's exclusive Simitri® Polymerized Toner uses toner particles of smaller size and more consistent shape to improve detail and definition – making text more legible and giving graphics and halftones greater detail. Quality, reliability, performance – all the result of years of proven experience in high-volume printing, plus cutting-edge leadership in document imaging technology. It all combines to make Konica Minolta your ideal production print partner.



Simitri®



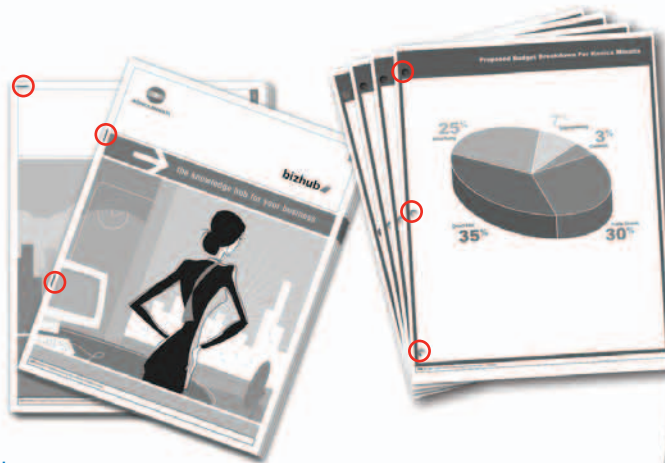
Pulverized

High-quality production print output.

Whether you're producing reports, presentations, corporate communications, human resource documents or any other production print project, Konica Minolta's exclusive Simitri® Polymerized Toner technology can make all your output look more professional.



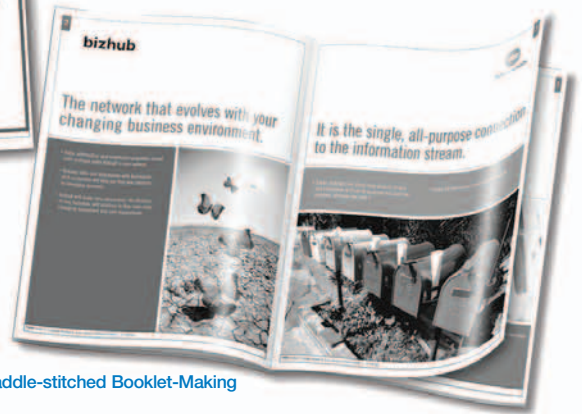
Multi-Position Stapling



2/3-Hole Punching

More Ways to Print and Finish:

automatic stapling in 8 positions, 2/3-hole punching, half-folding, tri-folding, z-folding, cover insertion, even saddle-stitched booklet making with face trimming – the bizhub PRO 920 can do it all.



Saddle-stitched Booklet-Making

Accelerate output, automate finishing.

All the printing and finishing capabilities your workflow demands. To produce reports, presentations, human resource documents, training manuals, newsletters and more – printed, sorted, stapled, hole-punched, even folded and saddle-stitched in booklets. And to keep on printing, job after job. That's the power of the bizhub PRO 920.

More paper. Larger sizes.

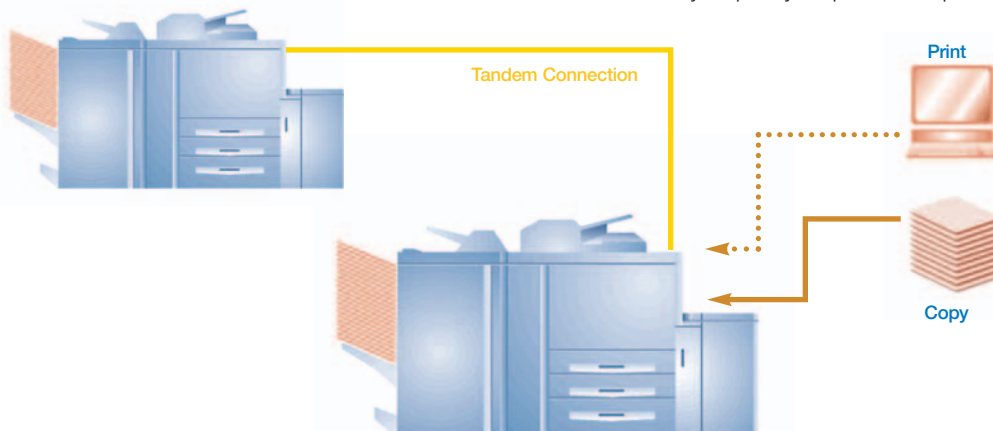
Heavier stock. Production print output can require a wide range of paper – and that's what the bizhub PRO 920 provides. You can print and copy full-bleed 11" x 17" originals on 12" x 18" paper, preserving margins and crop marks – and handling 2-page spreads, ledger-size spreadsheets and oversized graphics without losing information. Three universal paper trays give you 2,000-sheet standard capacity, plus 150-sheet manual bypass. Add an optional Large Capacity Tray with up to 4,500-sheet capacity, and you'll have maximum paper supply of up to 6,650 sheets – for longer print production runs with less reloading.

Goodbye to tedious hand-finishing.

Your print production isn't done until it's finished – so your bizhub PRO 920 provides a broad range of automatic finishing options. Depending on the needs of your document, you can sort, staple in any of 8 positions, hole-punch for binder insertion, center-staple, half-fold and trim for booklet making. Even add pre-printed covers or inserts post-process. The bizhub PRO 920 lets you tri-fold documents for mass mailings and fliers. You can storyboard to combine multiple originals on a single page, print transparencies with blank or printed sheets inserted, and print tabs on up to 110 lb. index stock. You can also add options step by step as your production print needs grow and change.

Tandem Print/Copy Capability.*

You can connect two bizhub PRO 920's for Tandem Copy or Tandem Print output, producing up to 184 ppm to deliver long print/copy runs twice as fast.



*Future availability

11" x 17" Full-Bleed on 12" x 18" paper

Cover Insertion



Even an intern can print like a pro.

Although it's a true production professional, the bizhub PRO 920 doesn't need a full-time professional to run it. The control panel has a simple look and feel that's common to other Konica Minolta bizhub models – so it's easy to understand, even for first-time users. And the PC interface of your IC-203 Image Controller is just as simple – allowing anyone to control advanced job handling capabilities, manage multiple jobs at once, recall jobs and job settings from memory, program jobs, and check status of jobs in queue.

① Automatic Document Feeder

holds up to 100 sheets with job build capability and accepts originals up to 11" X 17" paper.

② LU-404 Large Capacity Paper Tray

holds up to 4,000 sheets of up to 12" x 18" paper.

③ LU-403 Large Capacity Paper Tray

holds up to 4,500 sheets of 8-1/2" x 11" paper.

④ Two Universal Paper Trays

hold up to 500 sheets per tray, handle up to 11" x 17" paper.

⑤ Universal Paper Tray

holds up to 1,000 sheets, handles up to 11" x 17" paper.

⑥ PI-501 Post-Engine Inserter

lets you add pre-printed covers or inserts post-process.

⑦ FS-604 Booklet Finisher

lets you sort, staple up to 50 sheets, tri-fold, half-fold and saddle-stitch booklets.

⑧ FS-509 Finisher

provides sorting and 8-position stapling for sets of up to 100 sheets.

⑨ PK-505 Punch Unit

adds selectable 2/3-hole punch capability to your FS-509 or FS-604 Finisher.

⑩ ZU-602 Z-Fold/Punch Kit

adds Z-fold and selectable 2/3-hole punch capability to your FS-509 or FS-604 Finisher.

⑪ TU-501 Trimmer Unit

provides face trimming capability for your FS-604 Booklet Finisher.

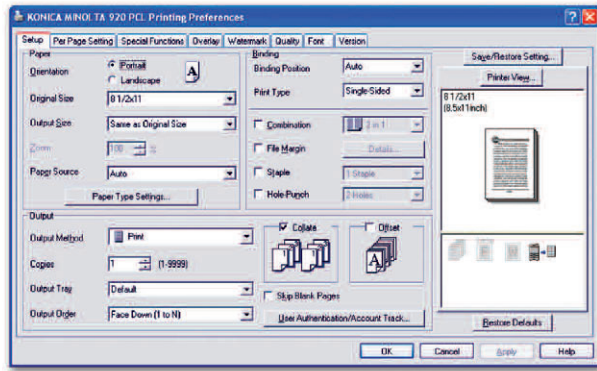
⑫ Manual Bypass

lets you load up to 150 sheets of letterhead or specialty paper up to 12" x 18".

⑬ IC-203 Embedded Image Controller

800 MHz CPU, Windows/Mac drivers, PCL5e/PCL6 and optional Adobe Postscript 3 capability.

○ = Not Shown

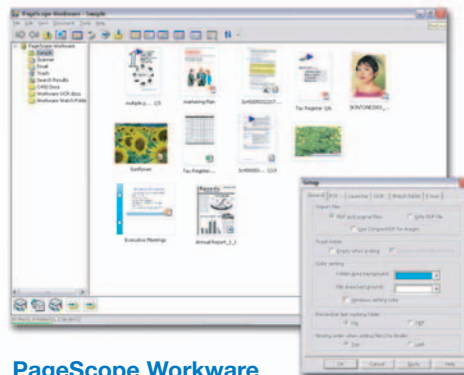


An industry-leading image controller.

With the embedded IC-203 Image Controller, your bizhub PRO 920 lets you print at full rated speed of 92 ppm – with simple point-and-click management of paper, printing and finishing options. Standard PCL5e/PCL6 and optional PostScript 3 capabilities give you flexible power to handle print production in any environment. A super-fast 800 MHz processor and large 512 MB maximum memory capacity means your jobs process and print faster – and standard hard disk drive provides 40 GB capacity for secure document storage.

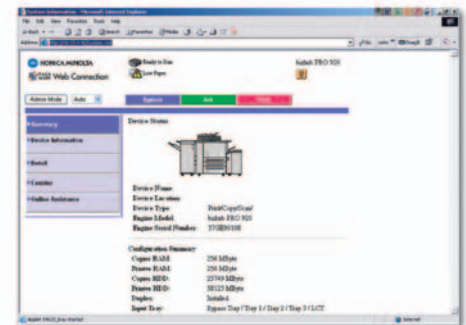
Control printing, manage workflow.

A true production professional lets you do it all from your desktop – print and finish, control print queues, guide document traffic, even scan and route in a single step. The IC-203 Image Controller and PageScope software provide all the power you need for networking, web connection, and management of all your documents and devices.



PageScope Workcenter

allows you to preview documents as thumbnail images without opening files – then merge, print and distribute with drag-and-drop speed.



PageScope Web Connection

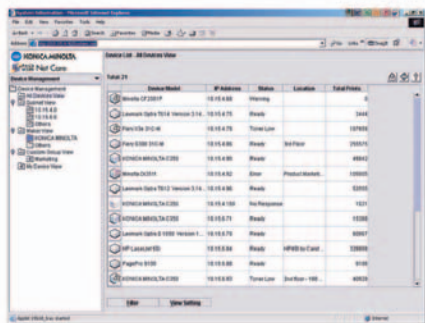
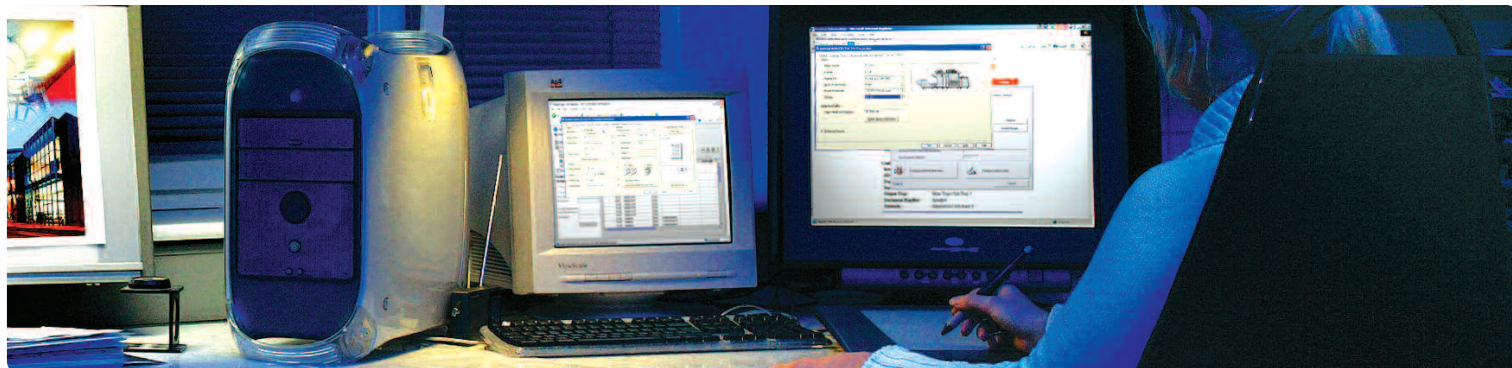
creates a “website” for your bizhub PRO 920, for system setup and access to status information through standard web browsers.

A better way to make connections.

With Konica Minolta, you're always in control – including web-based device control through your standard web browser. PageScope Web Connection lets you display detailed printer information on a simple, intuitive GUI: device status, paper supply, toner level, copy count. No need to get up, walk to your printer, and see if it's ready to go into production. PageScope Net Care gives IT administrators the power to manage an entire fleet of multifunctional devices from a single point – including both Konica Minolta bizhub MFPs and MIB-compliant devices from other manufacturers.

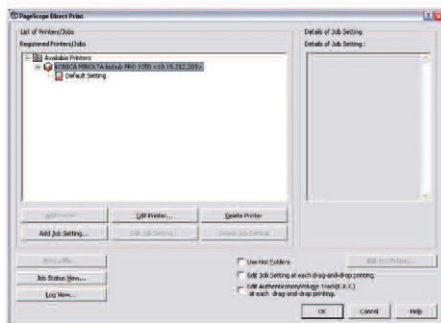
A personal document management solution.

Konica Minolta's optional PageScope Workware™ software gives you fast, flexible access to scanned documents, to view documents as thumbnail images, drag-and-drop to share or print, and search your files by filename, date, tags, even a combination of criteria – or perform full-text search on documents that have been OCR-converted. In fact, there's a full range of PageScope and other Konica Minolta software solutions to speed your production workflow – because faster, smoother production is the whole idea behind bizhub PRO.



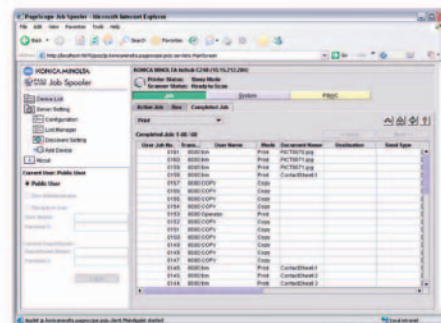
PageScope Net Care

provides one-point management capability for an entire fleet of devices – each identified by its own on-screen icon.



PageScope Direct Print

lets you send PDF or TIFF files to your bizhub PRO 920 using simple "Direct Print Function" commands – without using print drivers or application software.



PageScope Job Spooler

allows you to manage your bizhub PRO 920 print queue from any network connected PC.



bizhub PRO 920



General Specifications:

TYPE:
Production Printer/Copier/Scanner

IMAGING SYSTEM:
High-Speed Dual Beam
Laser Imaging

DEVELOPMENT SYSTEM:
Simitri® Polymerized Toner

MONTHLY DUTY CYCLE:
750,000 pages

PRINT/COPY SPEED:
92 ppm (8-1/2" x 11")

PRINT/COPY RESOLUTION:
600 x 600 dpi (1200 x 600 dpi
emulation)

HALFTONE REPRODUCTION:
256 gradations

MEMORY:
256 MB (standard)
512 MB (maximum)
40 GB Hard Disk Drive

WARM-UP TIME:
5.5 minutes (approx.)

FIRST COPY:
3.1 seconds or less (approx.)

COPY QUANTITY:
1 - 9,999 copies

MAGNIFICATION:
Zoom range:
25 - 400%, 0.1% increments
Preset reduction:
79%, 77%, 65%, 50%,
Preset enlargement:
121%, 129%, 155%, 200%

EXPOSURE MODES:
Auto, Text, Photo, Text/Photo,
Manual

MAXIMUM ORIGINAL SIZE:
12" x 18" (11" x 17" through RADF)

PAPER SIZE (THROUGHPUT):
5-1/2" x 8-1/2" to 12" x 18"

PAPER WEIGHTS (THROUGHPUT):
13 lb. bond to 53 lb. bond
(max. 200gsm = 110 lb. index)

PAPER SUPPLY:
500-sheet universal paper trays (2)
1,000-sheet universal paper tray
150-sheet intelligent bypass
(to 12" x 18")

OPTIONAL PAPER SUPPLIES:
4,500-sheet large capacity tray
(8-1/2" x 11" portrait)
4,000-sheet large capacity tray
(to 12" x 18")

MAXIMUM PAPER CAPACITY:
6,650 sheets (total, with options)

DOCUMENT FEEDER:
Speed: up to 92 originals per minute
Capacity: up to 100 sheets
Paper Size: 5-1/2" x 8-1/2"
to 11" x 17"
Paper Weight: 16 lb. bond
to 53 lb. bond (110 lb. index)

POWER REQUIREMENTS:
220V, 20 A (dedicated line)

DIMENSIONS (W x D x H):
35" x 30-3/4" x 47-3/8"

WEIGHT:
616 lbs.

OPTIONS:
EM-701 Memory Upgrade
(256 MB)
FS-509 Finisher
(sort, 100-sheet staple)
FS-604 Finisher (sort, 50-sheet
staple, saddle-stitch, tri-fold)
IC-203 Embedded Image
Controller
LU-403 Large Capacity Tray
(4,500 sheets, 8-1/2" x 11")
LU-404 Large Capacity Tray
(4,000 sheets, to 12" x 18")
PI-501 Post-Insertion Tray
PK-505 Punch Unit
PS-503 Adobe PostScript Kit
(for IC-203)
TU-501 Trimmer Unit
ZU-602 Punch and Z-fold Unit

PAGESCOPE APPLICATIONS:
PageScope Web Connection
(embedded web page for device)
PageScope Net Care (networked
device management)
PageScope Job Spooler
(print queue management)
PageScope Direct Print
(drag-and-drop printing of
TIFF and PDF files)
PageScope Workware™ (optional –
document management solution)

SECURITY:
In evaluation for ISO-15408
compliance*

Available Functions*

Accessibility
Account Management
(print/copy/scan counter)
Auto Document Feeding
Auto Duplex (stackless)
Auto Exposure Setting
Auto Layout (centering)
Auto Low Power, Reset, Shut-Off
Auto Magnification
Auto Paper Select
Auto Tray Switching
Book Copy
Booklet Making
Border Erase
(frame, fold, frame & fold)
Characterization
Concurrency (copy, print, scan)
Custom Originals
Cover Insertion
Duplex Printing
Electronic Copy Monitor
(1,000 accounts)
Energy Save Mode
Exposure Modes (Auto, Text,
Photo, Text/Photo, Manual)
Face-Up or Face-Down Output
Folding (half-fold, tri-fold, Z-fold)
Grouping
Help (context sensitive)
Hole-Punching (2/3-hole)
Image Centering
Image Overlay
Image Insert
Image Rotation
Image Shift
Imposition
Insert Sheets
Intelligent Job Building
Interrupt (Pause)
IPP Printing
Job List
Job Reserve (max. 99 jobs)
Job Programming (30 jobs)
Job Status
Lock Job (password use)
Low Power Mode
Mixed original Detection
Negative Image Capability
Network Scanning
Non-Image Area Erase
Offline Finishing
Preset Scaling
Post-Process Cover/Sheet Insertion
Power Save
Print Spooling (max. 99 jobs)
Proof Copy
Saddle-Stitching
Scanning:
Scan-to-E-mail
Scan-to-FTP
Scan-to-SMB (Desktop)
Scan-to-HDD (Mailbox)
TWAIN Scanning
Sorting
Stamping (continuous)
Stapling (8-position)
Storyboarding
(2-in-1, 4-in-1, 8-in-1, to
16-in-1 from print driver)
Tabs
Tandem Copy Capability*
Transparency Interleaving
(blank or copied sheets)
Trimming Mode
Watermarking
Watermark Numbering
Weekly Timer
Zoom

IC-203 (optional) Image Controller Specifications

TYPE:
Embedded Image Controller

CENTRAL PROCESSING UNIT:
800 MHz

**MEMORY/HDD
(SHARED WITH ENGINE):**
256 MB (standard)
512 MB (maximum)
40 GB Hard Disk Drive

PRINT SPEED:
92 ppm with bizhub PRO 920

PRINT RESOLUTION:
600 x 600 dpi
(1200 x 600 dpi emulation)

SCANNING:
Scanning in TIFF and PDF formats
Scan-to-E-mail
Scan-to-FTP
Scan-to-SMB (Desktop)
Scan-to-HDD (Mailbox)
TWAIN Driver for scan retrieval
from HDD

SCANNING SPEED:
Up to 92 opm (originals per minute)

PRINT DRIVERS:
Windows 98/ME, NT 4.0,
2000/XP, Server 2003*
Macintosh OS 9.0 or later,
OS X (10.2/10.3)

PAGE DESCRIPTION LANGUAGE:
Standard: PCL 5e/XL (PCL6),
TIFF Direct Print
Optional: Adobe PostScript 3,
PDF Direct Print

PROTOCOLS:
TCP/IP, IPX/SPX, EtherTalk, IPP,
NetBEUI



© 2005 KONICA MINOLTA BUSINESS SOLUTIONS U.S.A., INC. All rights reserved. Reproduction in whole or in part without written permission is prohibited. Konica Minolta and The essentials of imaging are trademarks of KONICA MINOLTA HOLDINGS, INC. bizhub, PageScope, and Workware are trademarks of KONICA MINOLTA BUSINESS TECHNOLOGIES, INC. Simitri is a registered trademark of KONICA MINOLTA BUSINESS SOLUTIONS. All other brands and product names are registered trademarks or trademarks of their respective owners.

Design & specifications are subject to change without notice.

* Some functions may require options, which may or may not be available at time of launch.

bizhub PRO 920



KONICA MINOLTA

KONICA MINOLTA
BUSINESS SOLUTIONS U.S.A., INC.
100 Williams Drive
Ramsey, NJ 07446

www.kmbs.konicaminolta.us
www.kmbs.konicaminolta.us/solutions

Item #: 920BRO
08/05