

KONICA MINOLTA

bizhub 210

“ I’m at the Hub.”

The 21 pages/min*¹, compact, all-in-one digital MFP equipped with copy, print, scan, and fax*² functions.



* The model shown is equipped with options.

*1 A4 Crosswise
*2 Optional

The essentials of imaging



Enhance your workflow by downsizing with the compact bizhub 210.



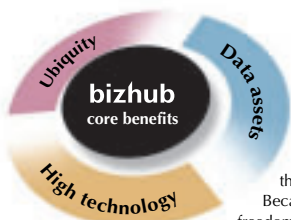
Big on functions, small in size. The compact, all-in-one bizhub 210. Equip your office with a digital MFP that's equipped with all the functions you need, like copying—including double sided, printing, scanning, and faxing. Not to mention empowering yourself with higher productivity and superior performance. The bizhub 210 increases work efficiency while lowering the total cost of ownership, especially in communication costs, and fits perfectly into SOHO, mid-size offices or wherever space is a consideration.



*The model shown is equipped with options.

bizhub Introducing Konica Minolta's bizhub. An innovative new brand that lets you open new doors to success.

- *Freely conduct business—regardless of time or place.*
- *Put yourself at the forefront of information application.*
- *Connecting people through a reliable, state-of-the-art technology.*



The core benefits inherent in all Konica Minolta bizhub products.

Ubiquity. Data assets. High technology. At Konica Minolta, strict attention is always focused on ensuring that these three benefits are at the heart of every bizhub product. Because it's these core benefits that empower you with the freedom to do business more intelligently.

bizhub 210

Scan & Send

[Standard Scanner Function]

The bizhub 210 can serve as a TWAIN-compatible local scanner when connected directly to a PC via USB. It can scan originals up to A3 size and pages of books.

[Scan to E-Mail]*

You can scan a graphical or text document and attach it directly to an e-mail message as a TIFF or PDF file. This provides a quick, easy, and inexpensive way to send information to clients or colleagues.

[Scan to FTP]*

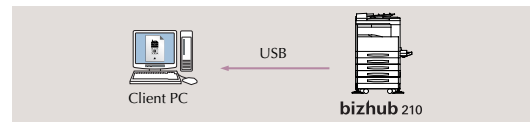
Scanned data can be sent directly to an FTP server and stored in a directory that you specify. You can convert paper documents to digital data just as simply as you would make copies, so that information can be easily shared over the network.

[Speed Dial/One-Touch Dial]

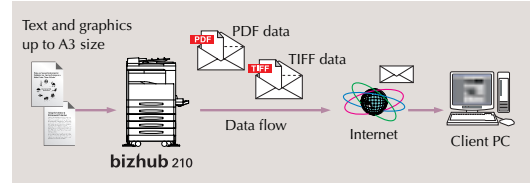
Please see Fax & Internet Fax section.

* The optional Fax Kit FK-505, Scanner Unit SU-502, and Network Interface Card NC-502 are required.

USB Connection

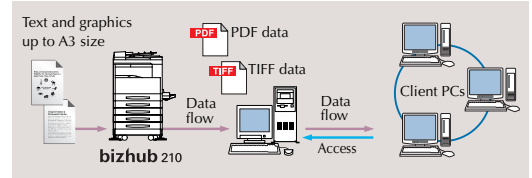


Scan to E-Mail



The scanned image is transmitted as an attachment of the e-mail.

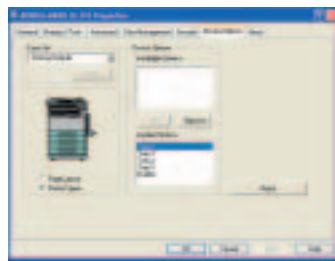
Scan to FTP



Network Printing Function

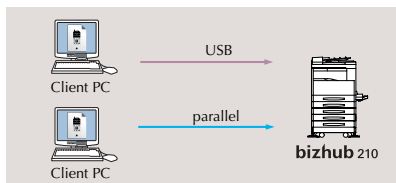
[Standard-equipped GDI Printer Function]

Documents up to A3 size can be output from a PC. The bizhub 210 prints 21 pages/min*² at 300 dpi or 12 pages/min*² at 600 dpi.



[USB and Parallel Interfaces as Standard Equipment]

Even without a network, these interfaces allow direct PC



connection so two people can use the printer functions at the same time.

[Network Printer]*¹

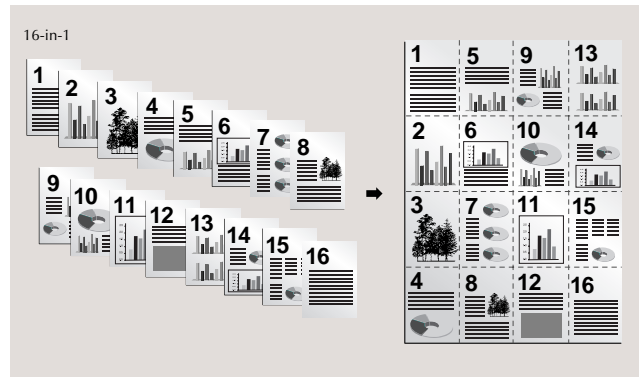
By mounting the optional Network Interface Card NC-502, the bizhub 210 can be used as a network printer (10Base-T/100Base-TX supported).

[Image Controller IC-205]

Enables PCL6 printer functions to further boost productivity with an output speed of 21 pages/min*² at 600 dpi. The high-speed RIP once printing function lets you print out even large volume documents quickly when making multiple sets of printouts. The PCL6 functions are compatible with Citrix MetaFrame.

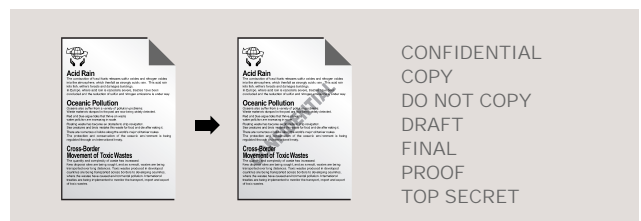
[Page Layout]

This function lets you print 2, 4, 6, 9, or 16 pages onto a single sheet to dramatically reduce the amount of paper used.



[Watermark]

Watermarks such as "CONFIDENTIAL" are automatically added to pages as they print. In addition to the seven preset types, up to 30 watermark types, each with a maximum of 20 characters, can be registered.



*¹ The optional Network Interface Card NC-502 is required.
*² A4 Crosswise

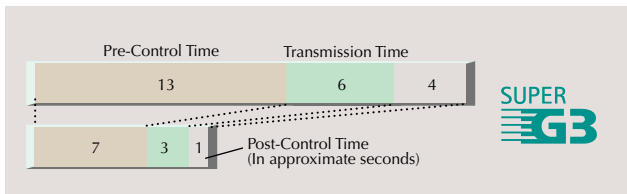
FAX & Internet FAX

* Optional Fax Kit FK-505 is required.



[Super G3 Fax]

The fax function uses the Super G3 international standard and the JBIG standard high-efficiency data compression scheme. Faxes can be sent over ordinary telephone lines at high speed, keeping your communication costs down.



It takes about 3 seconds to send an A4-size original with approximately 700 characters in standard image quality mode.

[Smoothing]

Smoothing reduces the jaggies from diagonal lines and curved text characters.

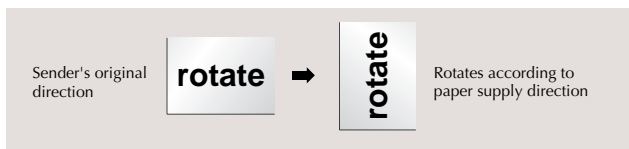
[Six Image Quality Modes]

There are three image mode levels: Standard, Fine, and Super Fine. A Half Tone mode can also be combined with either of the image modes for higher quality photo transmission.

[90° Image Rotation Transmission/Reception]*1*2

The images of A4 crosswise originals are automatically rotated by 90 degrees to the lengthwise direction before sending. When receiving A4 faxes, images that arrive in a different direction from the paper supply are rotated before they are output.

Rotation reception



[Large-Capacity Memory Reception]*3

The bizhub 210 is equipped with a 32MB memory, which is capable of receiving and storing a maximum of about 280 pages. This internal memory can also be expanded up to 96MB for receiving and storing a maximum of 1,024 pages.

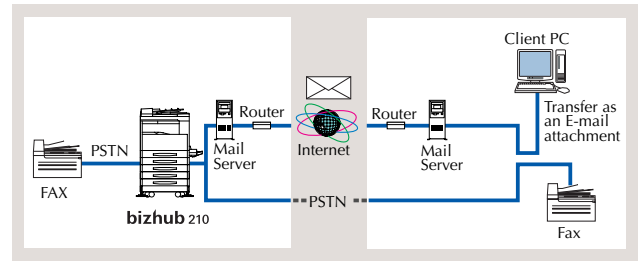
[Speed Dial / One-Touch Dial / Program Dial]

Register up to 200 frequently used fax numbers and e-mail addresses. Plus, you can register up to 27 destination items in the One-Touch Dial. Using the Program Dial function, you can program transmission/reception settings for specified destinations.

[Fax Forwarding Function]*4

You can forward a received fax document to specified fax numbers and e-mail addresses. Received fax documents can be printed out at the same time as they are forwarded.

Note : An e-mail environment is required for forwarding to e-mail addresses.



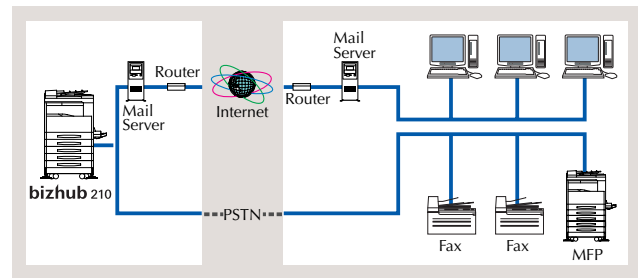
[Direct Transmission from a PC]*4*5

Send document data directly to an outside fax via the bizhub 210 right from your PC. Now, there is no need to print the data out before faxing, thus minimising image degradation.

[Simultaneous Broadcasting by Fax and E-Mail]*4

This function enables you to broadcast one original to a maximum of 243 destinations. It also allows you to broadcast to fax and e-mail destinations as one broadcast job.

Note : An e-mail environment is required for sending to e-mail addresses.

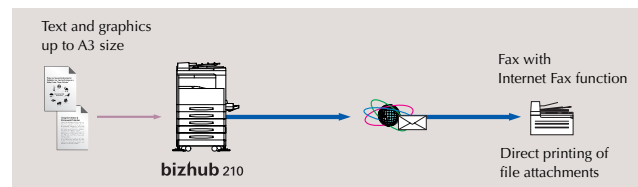


[Internet Fax]*4

Send and receive high quality image faxes over the Internet at high speeds. This can greatly reduce telephone charges, especially when communicating with people in distant locations.

Note : The receiver's side must have a compatible Internet Fax machine.

Internet Fax Function



*1 Image Rotation Transmission can be used when the original is fed in A4 (crosswise) or letter (crosswise).

*2 Image Rotation Reception cannot be used when receiving B5-size faxes.

*3 The fax memory is shared with the bizhub 210 main unit.

*4 The optional Network Interface Card NC-502 and Scanner Unit SU-502 are required.

*5 The optional Unimessage Pro and Unimessage I-net Portal applications are required. (Not available in some areas.)

Convenient Functions

[Quick Warm-Up/Fast First Copy]

The bizhub 210 delivers the first copy in 7 seconds*¹ or less, and when in the energy saving, stand-by mode, it's ready to go in 15 seconds or less. This eliminates waiting time so you can be more productive.

[Multi-Access]

Because the scanning, printing, and communication functions are completely independent, documents can be faxed even while other documents are being printed.

[25%-400% Wide Zoom]

The bizhub 210 has a wide zoom range of 25%-400% of the original document. The zoom can be set in 1% increments, allowing you to make precise size adjustments. Moreover, the magnification rate can be set independently in both vertical and horizontal directions.

[Various Automatic Functions]

The bizhub 210 is equipped with automatic functions that assure top-quality results. These include auto-density adjustment, auto-paper selection, and auto zoom setting.

[90° Image Rotation]

When the directions of the original and the paper supply are different, the image is automatically rotated before it is output to prevent copy mistakes.



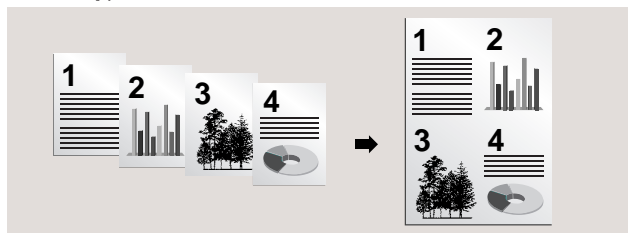
[2-in-1 / 4-in-1 Copy]*²

The 2-in-1 / 4-in-1 copy function outputs either two or four pages onto a single page, allowing you to cut costs by reducing the amount of paper used.

2-in-1 Copy



4-in-1 Copy

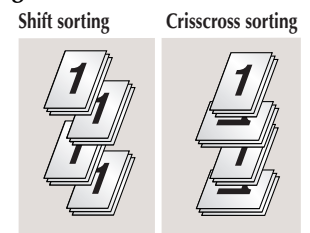


[Double-Sided Copies]*³

Double-sided copies can be made from single or double-sided documents. You can also make double-sided 2-in-1 and 4-in-1 copies. When copying double-sided documents, use the Reverse Automatic Document Feeder.

[Shift Sorting/Crisscross Sorting]*^{2*4*5}

These versatile sorting functions store the images of multiple documents temporarily into memory, then copy or print them into sets with the pages in correct order, thereby eliminating the need for an additional sorter.



[Multi-Purpose Cassette & Multi Bypass Tray]*⁶

The Multi-Purpose Cassette accommodates paper from A3 to A5 in size, as well as postcards, transparencies, envelopes, and other special media. The 100-sheet Multi Bypass Tray also accepts a variety of media, including thick paper, transparencies, labels, and envelopes.



[Maximum Paper Feed Capacity]

The bizhub 210 comes with a standard paper feed capacity of 250 sheets. With optional units, consecutive feeding of up to 1,350 sheets can be achieved, minimising downtime for paper replenishment and facilitating large copy runs.



[Job Separator]*⁷

Printer/fax outputs and copier outputs are automatically sorted on separate trays to avoid mix-ups and for easier retrieval.



A lamp, which accompanies the Job Separator and is located on the front of the main body, will switch on when the Printer/Fax tray moves up, alerting the user that there are documents on the tray.

*1 A4 Crosswise

*2 The optional Automatic Document Feeder is not required.

*3 The optional Automatic Duplex Unit AD-504 is required.

*4 For Shift Sorting, the optional Shift Tray SF-501 is required.

*5 The optional Paper Feed Unit PF-502 or Multi Bypass Tray MB-501 is required for crisscross sorting. Also, A4 or B5 output paper must be set in both crosswise and lengthwise directions in the Multi-Purpose Cassette and either the Paper Feed Unit PF-502 or the Multi Bypass Tray MB-501.

*6 The Multi Bypass Tray cannot be used to feed sheets for faxing.

*7 Requires the optional Job Separator JS-503.

Management

Document Management

[PageScope Cabinet]*1

You can easily transfer scanned data to your PC. PageScope Cabinet lets you handle documents the way you want.

Note: Bundled with the optional Network Interface Card NC-502.

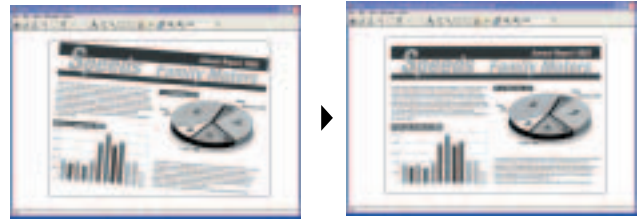
■ Image-correction gives you high quality scanned data

No need to re-scan paper documents when the image is slanted or off-centred. You can use PageScope Cabinet's image correcting functions to position them for easier reading.

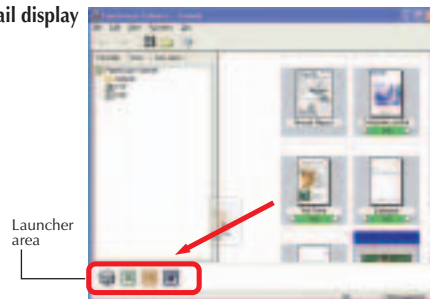
■ Simplifies data handling

Simply drag & drop documents onto registered icons to print documents or e-mail with ease.

Slant correction



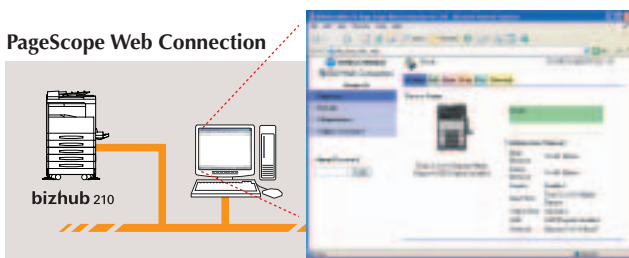
Thumbnail display



Device Management

[PageScope Web Connection]*2

PageScope Web Connection lets you confirm the amount of paper and toner remaining, make speed dial settings, and designate the destination for sending scanned data, all from your PC. Note: Bundled with the optional Network Interface Card NC-502.

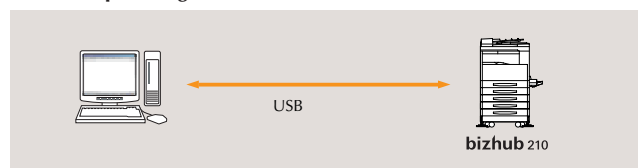


[Local Setup & Diagnosis (LSD)]*4

By connecting the bizhub 210 to your PC via a USB cable, you can manage the following on your PC, even in a networkless environment.

- Programme and change One Touch, Speed Dial and Group Dial numbers.
- Set up the initial settings for fax registrations, copy functions, and e-mail.
- Monitor the status of paper jams.
- Monitor the machine counter. (Inquire about the number of printouts)

Local Setup & Diagnosis



[PageScope Address Book Utility]*3

One-touch dial, speed dial, and other address data can be imported/exported to and from a client PC in batch form.

[Department Management]

The number of copies that have been made can be checked for up to 20 departments.

*1 The optional Fax Kit FK-505, Scanner Unit SU-502, and Network Interface Card NC-502 are required.

*2 The optional Network Interface Card NC-502 is required.

*3 Can be downloaded from the following Web site, or obtained through your Konica Minolta service representative. <http://www.biz.konicaminolta.com/km/download>

*4 Supplied with Fax Kit FK-505.

List of Functions and Options ● Standard equipment + Option required

2-in-1 4-in-1 Copy Function	●
Electronic Sorting	●
Shift Sorting	+SF-501
Crisscross Sorting	+PF-502 or MB-501
Double-Sided Copies	+AD-504
Local Scanner	●
Scan to E-Mail	+FK-505, SU-502 and NC-502
Scan to FTP	+FK-505, SU-502 and NC-502
Standard GDI Printer	●
USB/Parallel Interfaces	●

Network Printer	+NC-502
PCL 6 Printer	+Image Controller IC-205
Super G3 Fax	+FK-505
Internet Fax	+FK-505, SU-502 and NC-502
Simultaneous Broadcasting by Fax and E-Mail	+FK-505, SU-502 and NC-502
FAX Forwarding Function	+FK-505 (Also SU-502, NC-502 when forwarding to e-mail address)
Direct Transmission from a PC	+FK-505, SU-502, NC-502, Unimessage Pro* and Unimessage I-net Portal* * Not available in some areas.

Universal Design

[Universal Design Control Panel]

With high-contrast indications, large keys, and a variable-angle LCD (24°, 17°, or 10°), the user-friendly panel is designed for easy operation. The sharp, crisp display has easy-to-understand explanations, and frequently used keys are larger.



[Two-Tone Colour Design]

Two-tone earth colours are used for the body of the bizhub 210. This fresh, innovative styling is also highly practical because it makes the output pages easier to see.



[Convenient Open/Close Grip Tray]

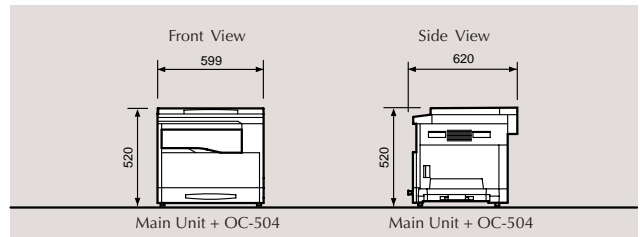
To make opening easy, you can grip the cassette by using the sturdy handle.



[Small Footprint]

The highly functional bizhub 210, boasting a standard inner paper output path and a sorter-less electronic sorting feature, allows the machine to remain compact. This design helps keep set-up space to a minimum for ideal in-office placement.

Dimensions (unit: mm)



*The model shown is equipped with options.

bizhub 210 Specification

Type:	Desktop
Reading Resolution:	600dpi
Writing Resolution:	600dpi
Memory Capacity:	Standard: 32MB Maximum: 96MB
Gradation:	256 Level
Original Type:	Sheet, Book, 3-D (Max. 3.0kg)
Max. Original Size:	A3
Copy Size:	A3 to A5
Image Loss:	Approx. 4 mm of image loss for each top/bottom/right/left edges
Warm-Up Time:	15 sec. or less
First Copy Time:	Flatbed Scan: 7 sec. or less ADF Scan: 11 sec. or less RADF Scan: 11 sec. or less
Copy Speed:	Copy Speed: 21 cpm and above *A4 Crosswise
Copy Magnification:	Fixed Ratio: 0.25/0.50/0.70/0.81/1.00/1.15/1.41/2.00/4.00 Zoom Ratio set by Up/Down key: 25% - 400% adjustable in 0.1 steps
Paper Tray:	Main Body: Multi-Purpose Tray (250 sheets) Bypass Tray: 1 Sheet Option: Paper Feed Unit PF-502 (250 sheets X 4) Multi Bypass Tray MB-501(100 sheets)
Paper Weight:	Main Body: 60-157g/m ² Bypass Tray: 60-157g/m ²
Continuous Copy No.:	1-99 Sheet
Power Source:	220-240V 5.5A 50/60Hz
Max. Power Consumption:	230V machine: 1,250w
Dimensions (W x D x H)mm:	599 x 620 x 487mm *To the face of original glass.
Weight (kg):	Basic: Approx. 38kg Full Option: Approx. 89kg
Floor Occupied Dimension : (W x D)	Basic: 599 x 620 mm Full Option: 998 x 665 mm
Other Functions:	Standard: GDI Printer (with GDI Driver) Local Scan (with TWAIN Driver) Auto Zoom Setting / Auto Paper Selection Image Rotation Lengthwise / Crosswise Self-Magnification Change Book Interrupt (Book Original → Simplex Auto Copy) Filing (Image Shift, Erase, Book Erase) 2-in-1, 4-in-1 Copy Electronic Sorting Energy Saving (Pre-heat / Auto Power Off) Program Registration : 2 Electronic Counter for Print (Total, Size) Non-Styled Size Registration : 1 Interrupt Copy 10 Key Account Management Option: Crisscross Sort Copy (With Paper Feed Unit PF-502, or Multi Bypass Tray MB-501 attached)

GDI Image Controller (Standard)

Type:	Embedded Type
CPU:	TIS ASIC (Shared with the copier)
Memory:	Standard: 32MB (Shared with the copier) Option: 64MB, 32MB (Shared with the copier)
Print Speed:	21 sheets/min. (300dpi), 12 sheets/min. (600dpi) *A4 Crosswise
Resolution:	600dpi × 600dpi, 300dpi × 300dpi
Protocols:	Option: TCP/IP, IPX/SPX (With Network Interface Card NC-502 attached)
Support OS:	Windows 98/Me/NT4.0/2000/XP/Server 2003
Interface:	Standard: USB1.1, Parallel port (IEEE1284) Option: Ethernet 100Base-TX/10Base-T (With Network Interface Card NC-502 attached)

Image Controller IC-205

Type:	Mount Type
CPU:	Hitachi : SH3
Memory:	Standard: 16MB Option: 128MB, 64MB
Print Speed:	21 sheets/min. (600dpi × 600dpi), 13 sheets/min. 1200dpi (equiv.) × 600dpi *A4 Crosswise
Resolution:	600dpi × 600dpi, 1200dpi (equiv.) × 600dpi
PDL:	PCL6/5e
Fonts:	PCL English 53fonts
Protocols:	Option: TCP/IP, IPX/SPX (With Network Interface Card NC-502 attached)
Support OS:	Standard: Windows 98/Me/NT4.0/2000/XP/Server 2003
Interface:	Standard: USB1.1, Parallel port (IEEE1284) Option: Ethernet 100Base-TX/10Base-T (With Network Interface Card NC-502 attached)
Power Consumption:	DC24V, DC5V Supplied by main body

Local TWAIN Scanner (Standard)

Type:	B/W scanner
Size:	A3L, A4L/C, B5L/C, A5L/C, B4L Legal Lengthwise, Letter L/C, Invoice L/C, 11 × 17, 11 × 14, FLS, 8K, 16K L/C
Resolution:	150dpi × 150dpi, 300dpi × 300dpi, 600dpi × 600dpi
Support OS:	Windows 98/Me/2000/XP/Server 2003
Driver:	TWAIN
Interface:	USB1.1

Fax Kit FK-505

Transmission Standard:	Super G3
Adaptation Circuit:	General Circuit, PBX (Internal Circuit)
Transmission Speed:	2.4kbps-33.6kbps
Compression:	MH/MMR/JBIG
Transmission Time:	Approx. 3 sec [When sending a JBIG compressed A4 original with Super G3 mode]
Transmission Size:	Flatbed : Max. A3 ADF : Max. 297(W) × 1000(L)mm (Std/Fine/Super Fine) Max. 297(W) × 900(L)mm (Super Fine, Manual Tx mode)
Recording Size:	A5C, B5C, A4L/C, B4L, A3L
Resolution:	204dpi × 98dpi (std), 204dpi × 196dpi (Fine), 204dpi × 392dpi/408dpi × 392dpi (Super Fine)
Abbreviated Dial:	200
One Touch Dial:	27
Program Dial:	4
Sequential Multiple Station Transmission:	Max. 243
Other Transmitting Functions:	Book Transmission, Memory Transmission, Direct Transmission, Batch Transmission, Timer Transmission, Manual Transmission, Mailbox Transmission, Polling Transmission, Relay Initiation Transmission, Relay Broadcast Transmission, FAX Forwarding function
Other Receiving Functions:	Memory Reception, Mailbox Reception, Polling Reception

System Option

Fax Kit FK-505

■ **Image Controller IC-205**
Installed internally, the IC-205 adds a variety of advanced printing functions.

Scanner Unit SU-502

■ **Network Interface Card NC-502**

■ **Expanded Memory Unit EM-101 (32MB) EM-102(64MB)**

Key Counter Kit

■ **Key Counter Mount Kit 1**

■ **Key Counter Mount Kit 2**

■ **Mechanical Counter MC-503**

■ **Unimessage Pro (Not available in some areas.)**

■ **Unimessage I-net Portal (Not available in some areas.)**

Original Cover OC-504



■ **Desk DK-701**
Holds the machine's main body when one or no optional Paper Feed Unit PF-502 tray is mounted.



■ **Desk DK-702**
Holds the machine's main body when two or three optional Paper Feed Unit PF-502 trays are mounted.



■ **Desk DK-703**
Holds the machine's main body when four optional Paper Feed Unit PF-502 trays are mounted.

Automatic Document Feeder DF-502

This can set up to 50 sheets of one-sided originals.

Reverse Automatic Document Feeder DF-605*

Accepts up to 80 sheets for two-sided copying.

* Mount Kit MK-501 is required.

Job Separator JS-503*

Lets you separate and designate the location for copy and print output.

Shift Tray SF-501*

Copies or print outputs can be shifted for sorting or grouping.

* The Job Separator and Shift Tray can not be attached at the same time.

Automatic Duplex Unit AD-504

For duplex copying using the non-stack method.

Multi Bypass Tray MB-501

Can set up to 100 sheets of A3 to A5 size paper, as well as accommodate OHP sheets or thick paper.

Paper Feed Unit PF-502

Holds from A5 to A3 paper. Provides storage capacity for up to 250 sheets.

Product appearance, configuration and/or specifications are subject to change without notice.

bizhub and PageScope are registered trademarks or trademarks of KONICA MINOLTA BUSINESS TECHNOLOGIES, INC. Windows is a registered trademark or trademark of Microsoft Corporation.

Adobe and PostScript are registered trademarks or trademarks of Adobe Systems Incorporated. All other brand and product names are registered trademarks or trademarks of their respective owners.

* As an ENERGY STAR Partner, KONICA MINOLTA BUSINESS TECHNOLOGIES, INC. has determined that this product has earned the ENERGY STAR for energy efficiency.

* ENERGY STAR is a U.S. registered mark.

Konica Minolta copiers and multi-functional peripherals are designed with the environment in mind.



- Have Earned ENERGY STAR for Energy Efficiency
- The Use of Recycled Materials
- Toner Recycle Mechanism
- Production at ISO-Certified Factories

Requirements for safe use

- Please read and follow the instruction manual to ensure safe operation.
- Only operate using appropriate power supply and voltage.
- Connecting the earth wire to an inappropriate place may cause explosion or electric shock. Please connect accordingly (Taiwan and the Philippines only).

KONICA MINOLTA BUSINESS TECHNOLOGIES, INC.

1-6-1 Marunouchi Chiyoda-ku, Tokyo, Japan
http://www.biz.konicaminolta.com



This catalogue was printed using recycled paper and soy ink.