



SATA-to-IDE Adapter

Quick Installation Guide

Introducing the SATA-to-IDE Adapter

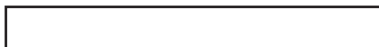
The *SATA-to-IDE Adapter* allows you to connect existing Ultra ATA 150/133/100/66 hard disk drives and ATAPI devices to the latest Serial ATA host adapter.

Features and Benefits

- Quickly converts older IDE/Ultra DMA devices for use with newer Serial ATA controllers
- L-shape compact design to reduce interference with other devices
- Connects directly to an IDE drive — no expansion slot required
- Compliant with Serial ATA 1.0a specification
- Supports ATA/ATAPI Ultra DMA data transfer rates up to 150MB/s
- Compliant with ATA/ATAPI PIO modes 0 to 4
- Connects large Ultra ATA 133/100/66 hard disks to the latest Serial ATA hosts
- Works with ATAPI optical storage devices such as CD-ROM, CD-RW, DVD-ROM and DVD-RW (up to 16x)

Serial Number Sticker

For future product return or exchange, this serial number is required. Please keep it for your reference.



System Requirements

- Pentium® or equivalent PC with an available Serial ATA port
- Windows® 7 (32-/64-bit) / Vista (32-/64-bit) / XP (32-/64-bit) / Server 2003 & 2008 (32-/64-bit) / 2000

Package Contents

- *SATA-to-IDE Adapter*
- SATA data cable
- "Y" split power cable
- Quick Installation Guide

Board Layout

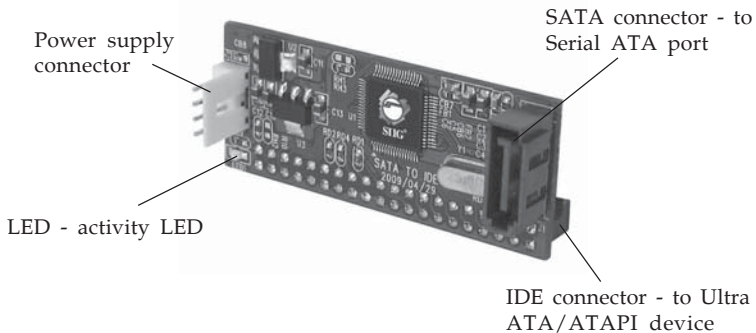


Figure 1: Layout

- **LED:** activity LED, blinks when the Ultra ATA/ATAPI device is accessed. If the LED is on continuously check the jumper setting of UltraATA/ATAPI device. To work properly with this adapter, Ultra ATA/ATAPI devices must be jumpered as **Master**. Please read the Ultra ATA/ATAPI device's users manual for more information.

Hardware Installation

Static Electricity Discharge may permanently damage your system. Discharge any static electricity build up in your body by touching your computer case for a few seconds. Avoid any contact with internal parts and handle cards only by their external edges.

1. Turn OFF the power to your computer.
2. Unplug the power cord and remove your computer's cover.
3. Using the jumper setting on the Ultra ATA/ATAPI device, set the device to **Master**. Read the Ultra ATA/ATAPI device's user's manual for more information. **Important:** Your device must be set to Master in order for it to work properly through the *SATA-to-IDE Adapter*.
4. Connect the *SATA-to-IDE Adapter* to the Ultra ATA/ATAPI device, refer to **Figure 2** and **3**.

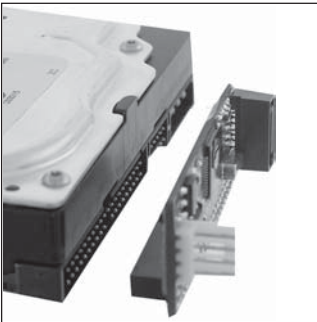


Figure 2



Figure 3

5. Connect the SATA data cable to the *SATA-to-IDE Adapter*, refer to **Figure 4** and **5**.

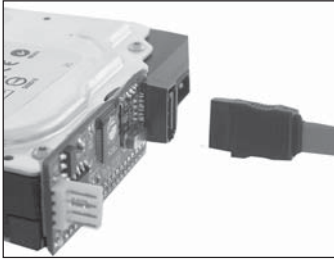


Figure 4

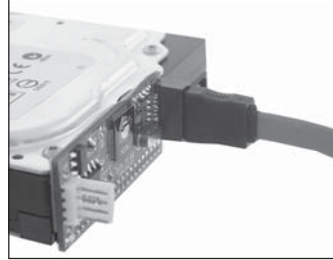


Figure 5

6. Connect the "Y" split power cable to the *SATA-to-IDE Adapter*, refer to **Figure 6** and **7**.

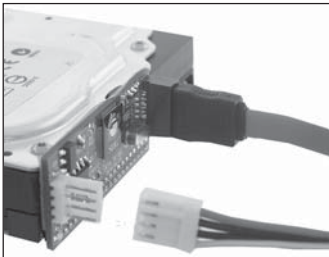


Figure 6

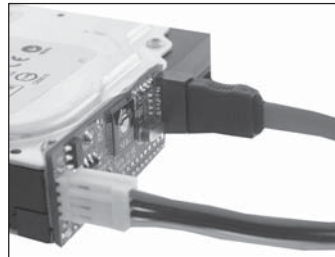


Figure 7

7. Connect the other end of the SATA data cable to an available Serial ATA port on the Serial ATA host adapter or motherboard.

8. Connect the "Y" split power connector to power the Ultra ATA/ATAPI device, refer to **Figure 8**.

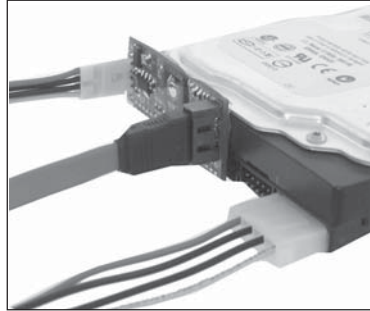


Figure 8

9. Connect the other end of the "Y" split power cable to the system power source.
10. Hardware installation is now complete.
11. Replace the computer cover and reconnect the power cord.

Windows Driver Installation

No driver installation needed.

Blank Page

Technical Support and Warranty

QUESTIONS? SIIG's **Online Support** has answers! Simply visit our web site at www.siig.com and click **Support**. Our online support database is updated daily with new drivers and solutions. Answers to your questions could be just a few clicks away. You can also submit questions online and a technical support analysts will promptly respond.

SIIG offers a lifetime manufacturer warranty with this product. Please see our web site for more warranty details. If you encounter any problems with this product, please follow the procedures below.

- A) If it is within the store's return policy period, please return the product to the store where you purchased from.
- B) If your purchase has passed the store's return policy period, please follow these steps to have the product repaired or replaced.

Step 1: Submit your RMA request.

Go to www.siig.com, click **Support**, then **RMA** to submit a request to [SIIG RMA](#). If the product is determined to be defective, an RMA number will be issued.

Step 2: After obtaining an RMA number, ship the product.

- Properly pack the product for shipping. All software, cable(s) and any other accessories that came with the original package must be included.
- Clearly write your RMA number on the top of the returned package. SIIG will refuse to accept any shipping package, and will not be responsible for a product returned without an RMA number posted on the outside of the shipping carton.
- You are responsible for the cost of shipping. Ship the product to the following address:

SIIG, Inc.
6078 Stewart Avenue
Fremont, CA 94538-3152, USA
RMA #: _____

- SIIG will ship the repaired or replaced product via Ground in the U.S. and International Economy outside of the U.S. at no cost to the customer.

About SIIG, Inc.

Founded in 1985, SIIG, Inc. is a leading computer upgrade manufacturer of I/O connectivity products, including PCI & ISA serial and parallel ports, USB, Serial ATA & UltraATA controllers, FireWire (1394a/b), networking, sound cards, and other accessories. SIIG is the premier one-stop source of upgrades.

SIIG products offer comprehensive user manuals, many user-friendly features, and are backed by an extensive manufacturer warranty. High-quality control standards are evident by the overall ease of installation and compatibility of our products, as well as one of the lowest defective return rates in the industry. SIIG products can be found in computer retail stores, mail order catalogs, through major distributors, system integrators, and VARs in the Americas and the UK, and through e-commerce sites.

PRODUCT NAME

SATA-to-IDE Adapter

FCC RULES: TESTED TO COMPLY WITH FCC PART 15, CLASS
B OPERATING ENVIRONMENT: FOR HOME OR OFFICE USE

FCC COMPLIANCE STATEMENT:

This device complies with part 15 of the FCC Rules. Operation is subject to the following two conditions: (1) This device may not cause harmful interference, and (2) this device must accept any interference received, including interference that may cause undesired operation.

THE PARTY RESPONSIBLE FOR PRODUCT COMPLIANCE

SIIG, Inc.
6078 Stewart Avenue
Fremont, CA 94538-3152, USA
Phone: 510-657-8688

SATA-to-IDE Adapter is a trademark of SIIG, Inc. SIIG and the SIIG logo are registered trademarks of SIIG, Inc. Microsoft, Windows and Windows Vista are either registered trademarks or trademarks of Microsoft Corporation in the United States and/or other countries. Pentium is a registered trademark of Intel Corporation. Other names used in this publication are for identification only and may be trademarks of their respective companies.