

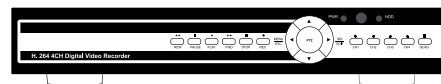


Quick Start Guide

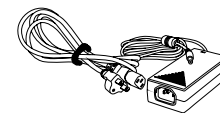
4 Channel H.264 Network DVR with
2 Digital Wireless Cameras and 2 Wired Cameras
Model: QSD9004VW2

1 Connect 2 Setup 3 Enjoy DVR Setup

What's in the box? check that your package includes the following:



4 Channel DVR



Power Supply for DVR



Manual



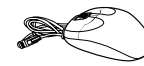
Remote Control



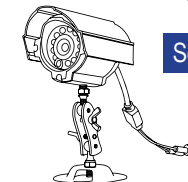
BNC to RCA Cable



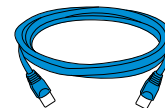
Software CD



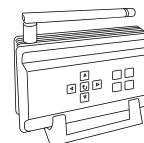
USB Mouse



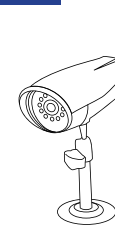
QD28414W - x2



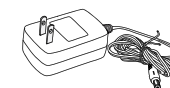
Ethernet Cable



Receiver
CT404SD- x2



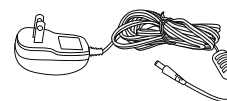
Wireless Cameras
DW200C- x2



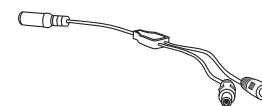
Power Supply
for Cameras- x4



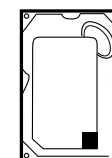
60 FT. Cables x 2



Power Supply
for CT404SD- x1



2 Way Splitter for
Wireless Receivers



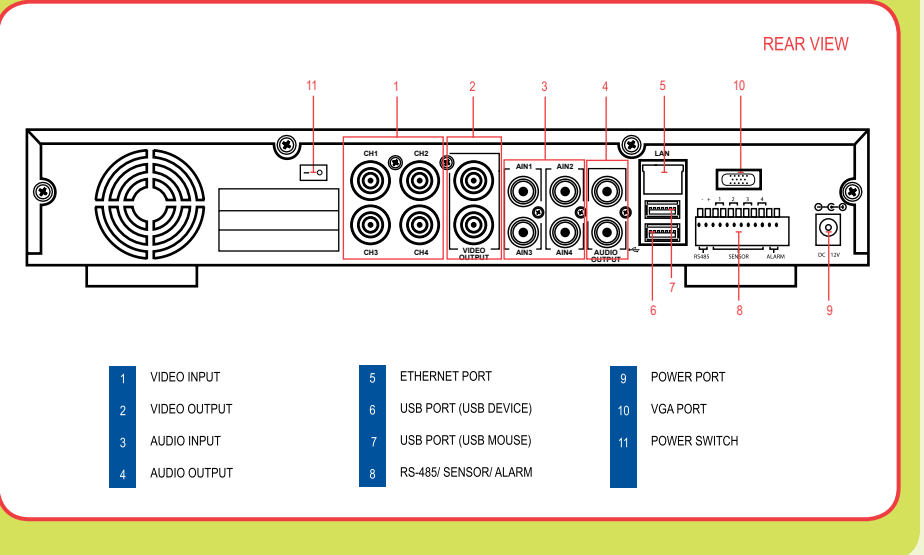
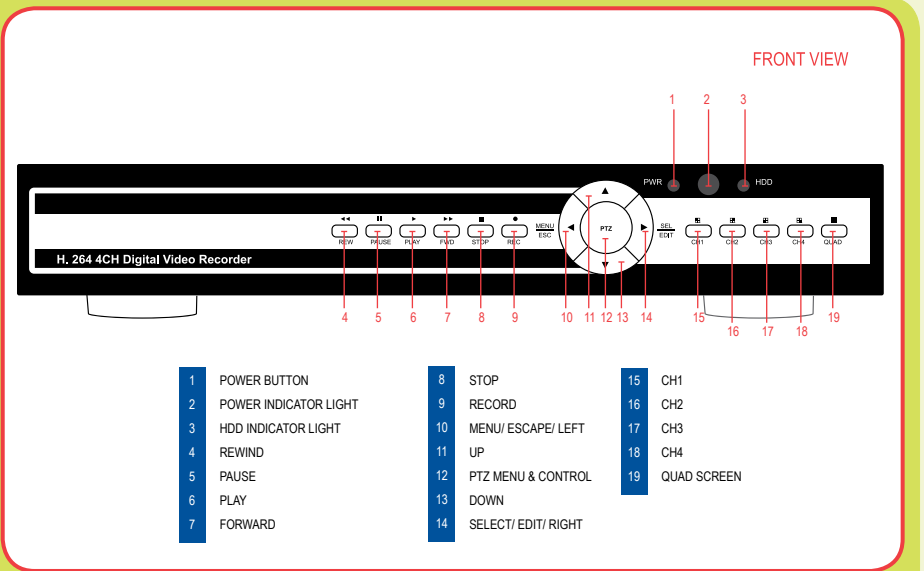
Hard Drive (Pre-Installed)



Digital Peripheral Solutions, Inc.
8015 East Crystal Drive,
Anaheim, CA 92807
www.Q-See.com

1 Connect

4 Channel DVR



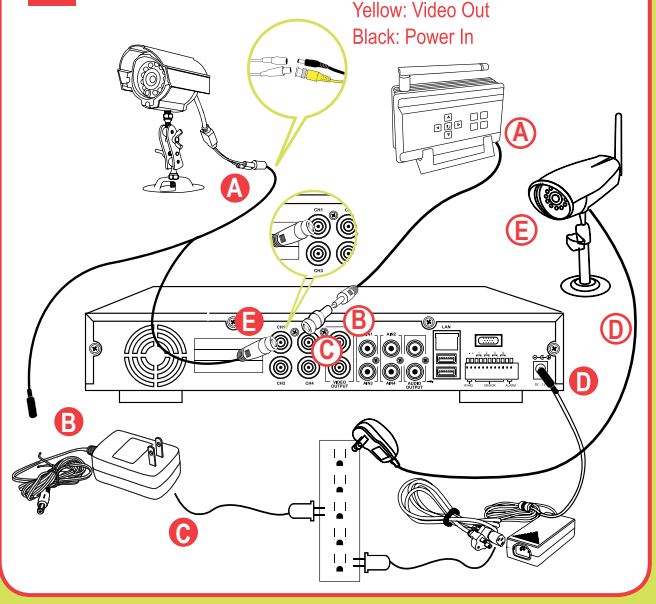
CAUTION: Use only the power adapters supplied with the Q-See unit. We recommend Plugging the DVR and Cameras into a Transient Voltage Surge Protector (UL-449 Rating)* 330 or lower clamping voltage, Joule rating 400.

1 CONNECT

WIRED CAMERAS

- A** Connect the 60 ft. extension cable to the camera
 - B** Connect the female power end of the 60 ft. cable to the power supply
 - C** Connect the power supply to the power outlet
 - D** Connect the power supply to the DVR
 - E** Connect the video feed on the other end of the cable to the DVR
- Repeat the same process for the second camera

1 CAMERA CONNECTIONS



WIRELESS CAMERAS

- A** Attach video cable to receiver
 - B** Attach RCA connector to RCA/ BNC adapter
 - C** Attach RCA/ BNC adapter to video in port
 - D** Attach power supply to camera and power outlet
 - E** Pair camera to receiver
- Repeat process for second camera

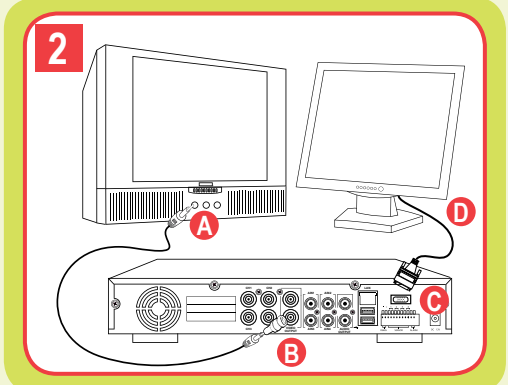
2 CONNECT THE DVR TO A TV OR MONITOR

CONNECT TO A TV

- A** Plug the BNC to RCA adapter to the Video Out port on the DVR and then connect an RCA cable (not included) to the adapter
- B** Connect the other end of the RCA cable to the Video Input on the TV

CONNECT TO VGA MONITOR

- C** Connect one end of VGA cable (not included) to VGA port on DVR
- D** Plug other end of VGA cable to VGA port on monitor



2 Setup

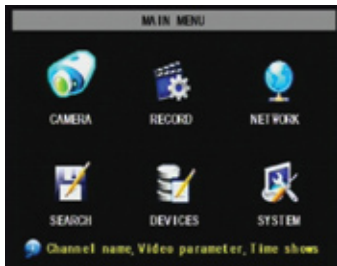
To navigate through the DVR menu, three options are available:

1. **DVR Front Panel:** Use the DIRECTION keys to move the cursor and the SEL key to select
2. **Remote Control**
3. **USB Mouse (included)**

A Accessing the DVR menus

Push MENU from the DVR front panel, or remote.

The Main Menu offers the following Setup Features:



CAMERA: Setup name display, position, image view, and record quality of each channel (camera).
RECORD: Enable recording & audio, set resolution & quality, recording mode and file size.
NETWORK: Setup Network access (Remote Internet Monitoring).
SEARCH: Find files for playback and backup.
DEVICES: Manage & format hard drive and USB devices. Setup alarms, PTZ cameras, mobile phone access and motion detection.
SYSTEM: Setup time, date, password and video mode.

B Setup Image View and Record Quality



From the Main Menu, select CAMERA. Here you can setup the name display (up to 8 characters) and position of each channel (camera). Select COLOR SETUP to adjust the image brightness, saturation, contrast and hue settings of each channel (camera). You can also choose whether each channel can be previewed in LIVE MODE and/or RECORDING MODE.

C Setting up the DVR to Record:

This system offers three modes for recording:

1. **Manual**
2. **Time Schedule**
3. **Motion Detection**



From the main menu, select RECORD to enter into the Record Setup menu (C1).

CHANNEL: "ON" enables video to record from the respective camera. If the channel is set to "OFF", video from that channel will not record.

RESOLUTION: D1= 704x480, HD1= 704x240, CIF=352x240

QUALITY: Best, Good, Normal

Using higher resolution and quality settings, results in better video quality, but takes up more space on the hard drive. Choosing lower settings, results in lower video quality, but takes up less space on the hard drive.

AUDIO: If audio is ENABLED, sound will be recorded with the video from the channels, and will have audio output on playback mode. If audio is DISABLED, sound will not record, and will have no audio output on playback mode (Audio cameras or a microphone is required to record the sound).

REC MODE: Sets DVR to record on Manual, Motion Detection, and Time Schedule Recording Detailed (instructions below).

PACK TIME: Choose the time length of all recorded files: 15, 30, 45, 60 min (Max = 60 min).

Manual Recording:

From the Record Setup screen, set the Rec Mode to "ALWAYS". Your DVR will continuously record, and separate files will be created with the Pack Time Intervals you selected.

Time Schedule Recording:

From the Record Setup screen, set the Rec Mode to "TIME SCHEDULE RECORD" and click "SCHEDULE" in green. This will display the Schedule menu (C2). Select the channels (cameras) that you wish to record on a schedule. The options are: All, CH-1, CH-2, CH-3, and CH-4 respectively. The channel you select will be highlighted in "Blue", and the unselected channels will be "Gray". Click on the green GENERAL option box, and then select the boxes for the days and times to record using this option on the timeline. You can use the [From – To] pull-down menus and COPY button to copy settings from one day to another day, or all days. Your DVR will record on it's Time Schedule and separate files will be created with the Pack Time Intervals you selected.

Select APPLY to activate your customized schedule, and then reboot the DVR.

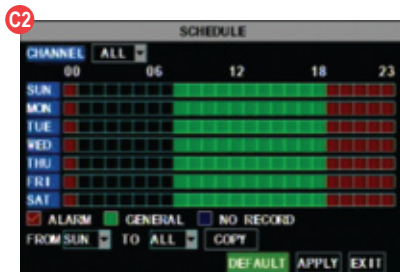
You can also click on the DEFAULT button to use the system defaults.

The system default settings are:

Hr 01:00 am-07:59 am : No recording

Hr 08:00 am-18:59 pm : General recording (Time Schedule)

Hr 19:00 pm- 00:59 am : Alarm recording (Motion Detection)



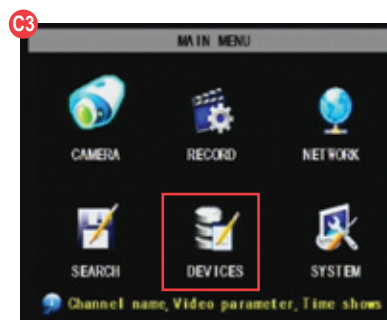
Grid Explanation:

Red= Alarm (motion detection) recording
Green= General (time schedule) recording
Transparent= No recording
Blue= The channel and date selected.

Motion Detection Recording:

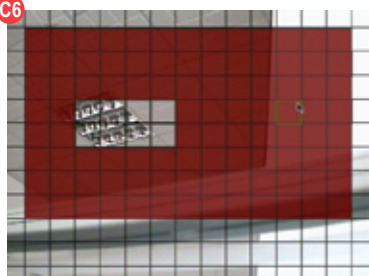
From the Record Setup screen, set the Rec Mode to "TIME SCHEDULE RECORD" and click "SCHEDULE" in green. This will display the Schedule menu (C2). The options are: All, CH-1, CH-2, CH-3, and CH-4 respectively. The channel you select will be highlighted in "Blue", and the unselected channels will be Grey. Click on the red ALARM option box, and then click on the boxes for the days and times that you want to record using this option on the timeline. You can use the [From – To] pull-down menus and COPY button to copy settings from one day to another day, or all days. Your DVR will record on Motion Detection, and separate files will be created with the Pack Time Intervals you selected.

Select APPLY to activate your customized schedule, and go to the Devices option (C3), and then select the Motion Option (C4) which will display the Motion Detect Box.



The Motion detection Menu (C5) has three sections, including Channel Status, Sensitivity and Motion area. CHANNEL STATUS: This option allows you to enable motion detection on any channel. SENSITIVITY: This option allows you to set the sensitivity level of motion detection from 1 to 4. (Level 4 being the highest.)

C6

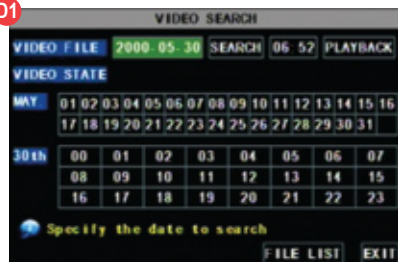


Click on the MD AREA SETUP button, to display the image shown in (C6). This option allows you to select the area you want to be sensitive to motion. The area in red is sensitive to motion. You can set this area by using the USB mouse, or pushing the REV, FWD, and SEL keys on the DVR front panel. Once you have set the area, right click with the mouse or push the ESC key to save the setting. After you have set the motion sensitivity area for all cameras, click on the Apply button to save the settings.

D Setting up the DVR to Playback

From the Main Menu select SEARCH to display the Video Search Menu (D1).

D1



Searched Playback:

If you input a specific date and click SEARCH, you will find all the recordings for that day. When you select the day and time to view, you will see all 4 cameras play back. (The highlighted dates are the files available to play.)

You can also click the FILE LIST button to display the File list interface, and playback or backup the file you selected (D2).

When playing back video:

1. Fast Forward at speeds of 2x, 4x, or 8x
2. Play video at Normal pace, or Slow Play at 1/2x, 1/4x, 1/8x
3. Pause and Play frame by frame using the Playback Control Bar
4. Adjust volume by clicking or sliding the Tune Control Bar.

When playback has finished, the previous menu will be displayed.

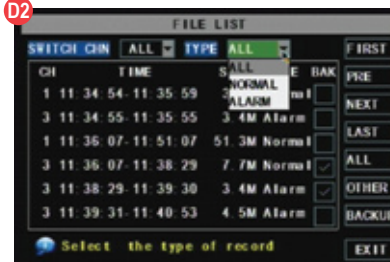
File List:

On the Video Search Menu mode, click FILE LIST to display the sub-menu (D2). This option allows you to view all of the available files by Channel and Type (All, General, or Alarm).

Select a file from the list. Push the SELECT button to playback the file.

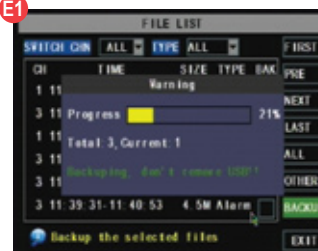
For more information on the File List option, refer to section 5.2.4 "Search Recordings" in the User's Manual.

D2



E Backup Files

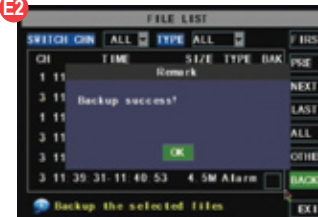
E1



Insert a USB flash drive or USB hard drive into the USB port on the back of the DVR, bottom USB port. Display the File List menu by clicking FILE LIST from the Video Search Menu. (See section D).

To backup one recorded event from the file list, select the file from the list, and click BACKUP. To backup more than one file, put a check mark in the BAK box at the end of each file you choose to backup. A Progress Bar will display. When the backup is complete, a dialog box will appear as "Backup Success!" Click the [OK] button to save your backup (E2).

E2



Explanation: The Backup file will be in H.264 format. H.264 video can only be viewed with the Multimedia Player which comes with your DVR, or through the NetViewer program. In order to have your backup video compatible with all Media Players, you must convert the video into AVI format using the Multimedia Player or NetViewer program. See section 5.2.5 in the product manual for more information on using the Multimedia Player.

3 Enjoy



CONGRATULATIONS

on your purchase!

This Q-See product has undergone extensive quality control. If you have any issues during the setup process, please contact our support department before returning the product.

We have your solution!

- 1) Need assistance setting up the remote monitoring feature with your Q-See DVR? Visit www.portforward.com/qsee
- 2) Visit our Q-See Support Section at www.Q-See.com for instant troubleshooting tips, FAQs, DVR firmware downloads, Live Chat and More.
- 3) Contact our Support Team:



On the Web: (24/7) Visit the Technical Support Section

www.Q-See.com

Save time, try the Live Chat link on our home page.



By Phone (Monday thru Friday, 9am-5pm (PST))

Tech Support 1 (877) 998 3440, ext 539

Customer Service 1 (877) 998 3440 ext. 538



By Email:

ts@dpsi-usa.com