

EN/E

It is important to read this instruction prior to using your new product for the first time.
Es importante leer este manual antes de usar por vez primera su equipo.

Important information

Precations

- This compact disc player uses a laser to read the music on the disc. The laser mechanism corresponds to the cartridge and stylus of a record player. Although this product incorporates a laser pick-up lens, it is completely safe when operated according to directions.
- Discs rotate at high speed inside the player. Do not use damaged, warped, or cracked discs.
- Do not touch the pick-up lens which is located inside the disc compartment. To keep dust from collecting on the pick-up lens, do not leave the compartment door open for an extended period of time. If the lens becomes dirty, clean it with a soft brush, or use an air blower brush designed for camera lenses.

Headset safety

- Have a Blast-Just Not in your eardrums! Make sure you turn down the volume on the unit before you put on headphones. Increase the volume to the desired level only after headphone are in place.
- Do not play your headset at high volume. Hearing experts warn against extended high-volume play.
- If you experience ringing in your ears, reduce volume or discontinue use.
- You should use with extreme caution or temporarily discontinue use in potentially hazardous situations. Even if your headset is an open-air designed to let you to hear outside sounds, do not turn up the volume so high that you are unable to hear what is around you.



General controls

DEMO/DIMMER – To turn the feature demonstration on or off, to adjust display brightness.

VOL+ / VOL- – To increase/decrease the volume.

▶▶ – To play and pause the current CD.

PREV/◀, NEXT/▶ – To tune radio frequency; to skip CD track; to fast search through the CD.

OPEN/CLOSE – To open and close CD disc tray.

STOP – To stop playing CD.

REPEAT – To repeat a track, CD, or all CDs.

ⓧ – To mute and restore audio output.

Ⓢ – To turn on/off random playback.

FM ST. – To switch between FM stereo and mono modes.

DISC SKIP – To skip to next CD.

INTRO – To turn INTRO mode on or off to play the first 10 seconds of each track.

◀ FOLDER/PRESET ▶ – To select previous / next tuner preset station and previous / next folder during mp3/WMA CD playback.

SLEEP – To select the time interval in minutes before the unit turns off.

- The remote control must be inserted with 2 "AAA" or "R3" or "UM4" batteries prior to use.
- Cassette functions cannot be operated from the remote control.



CD playback

This unit is compatible with CD-RW/ CD-R discs for playback.

Notes on CD-R/RW Disc:
Do not affix any type of labels to either side (recordable or labeled side) of a CD-R/RW disc as this may result in the unit malfunctioning.

- To avoid damages to the CD-R/RW disc, do not open the disc compartment door while the disc is being read.
- Do not load an unrecorded CD-R/RW disc into the unit. This may take a longer time to read the disc.
- Playback capability for CD-RW discs may vary due to variations in the quality of the CD-RW disc and the recorder used to create the disc.

Notes on Simple mp3/WMA Playback:
This unit is compatible with simple mp3/WMA discs. Text information can be shown (e.g. ID3 tags)
It is strongly recommended that you use a single folder

structure for simple mp3/WMA discs. If there are more than only layer of folders, the tracks may be rearranged.

- The first 10 folders from the first 8 folder levels can be read on this unit.
- The unit reads the first 412 files from each disc and the first 255 files in each folder.

- Please take care when loading or unloading discs in the disc drawer. Read below for details.
- Remove all discs from the disc drawer before moving or transporting the unit.
- Do not put discs in the trays of the disc drawer when they are still moving.
- Do not push or force the rotation of the disc trays. Always use the **DISC SKIP** button.
- Do not put discs in any unexposed disc trays.
- When an error occurs and the disc drawer does not close, empty all disc trays and try again.



FCC information

This device complies with Part 15 of the FCC Rules. Operation is subject to the following two conditions: (1) This device may not cause harmful interference, and (2) this device must accept any interference received, including interference that may cause undesired operation. This device generates and uses radio frequency (RF) energy, and if not installed and used properly, this equipment may cause interference to radio and television reception. If this equipment does cause interference to radio or television reception (which you can determine by turning the equipment off and on), try to correct the interference by one or more of the following measures:

- Reorient the receiving antenna (that is, the antenna for the radio or television that is "receiving" the interference).
- Move the unit away from the equipment that is receiving interference.
- Plug the unit into a different wall outlet so that the unit and the equipment receiving interference are on different branch circuits.

If these measures do not eliminate

the interference, please consult your dealer or an experienced radio/television technician for additional suggestions. In accordance with FCC requirements, changes or modifications not expressly approved by Thomson Inc. could void the user's authority to operate this product. This product complies with DHHS Rules 21 CFR Subchapter J. Applicable at the date of manufacture.

This Class B digital apparatus complies with Canadian ICES-003. Cet appareil numérique de la class B est conforme à la norme de NMB-003 du Canada.

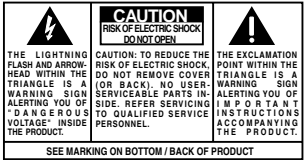
For your records

In the event that service should be required, you may need the model number and the serial number. In the space below, record the date and place of purchase and the serial number:

Model No.:
Date of Purchase:
Place of Purchase:
Serial No.:



This audio system has earned the ENERGY STAR.



WARNING: TO PREVENT FIRE OR ELECTRICAL SHOCK HAZARD, DO NOT EXPOSE THIS PRODUCT TO RAIN OR MOISTURE.

For your safety

The AC power plug is polarized (one blade is wider than the other) and only fits into AC power outlets one way. If the plug won't go into the outlet completely, turn the plug over and try to insert it the other way. If it still won't fit, contact a qualified electrician to change the outlet, or use a different one. **Do not attempt to bypass this safety feature.**

CAUTION: TO PREVENT ELECTRIC SHOCK, MATCH WIDE BLADE OF PLUG TO WIDE SLOT, FULLY INSERT.

Technical information

Product: Audio System
Brand: RCA
Model: RS2663
Power Supply: 120V ~ 60Hz
Power Consumption: 120 Watts

Service information

This product should be serviced only by those specially trained in appropriate servicing techniques. For instructions on how to obtain service, refer to the warranty included in this Guide.

Don't infringe

This product should only be used for the purposes for which it is sold, that is, entertainment, violating no copyright law. Any attempts to use this product for which it is not intended is unlawful and therefore not condoned by Thomson.

PLEASE READ AND SAVE THIS FOR FUTURE REFERENCE

IMPORTANT SAFETY INSTRUCTIONS

- Some of the following information may not apply to your particular product; however, as with any electronic product, precautions should be observed during handling and use.
- Read these instructions.
- Keep these instructions.
- Heed all warnings.
- Follow all instructions.
- Do not use this apparatus near water.
- Clean only with dry cloth.
- Do not block any ventilation openings.
- Install in accordance with the manufacturer's instructions.
- Do not install near any heat sources such as radiators, heat registers, stoves, or other apparatus (including amplifiers) that produce heat.
- Do not defeat the safety purpose of the polarized or grounding-type plug. A polarized plug has two blades with one wider than the other. A grounding type plug has two blades and a third grounding prong. The wide blade or the third prong is provided for your safety. If the provided plug does not fit into

- your outlet, consult an electrician for replacement of the obsolete outlet.
- Protect the power cord from being walked on or pinched particularly at plugs, convenience receptacles, and the point where they exit from the apparatus.
- Only use attachments/accessories specified by the manufacturer.
- Use only with the cart, stand, tripod, bracket, or table specified by the manufacturer, or sold with the apparatus. When a cart is used, use caution when moving the cart/apparatus combination to avoid injury from tip-over.
- Unplug this apparatus during lightning storms or when unused for long periods of time.
- Refer all servicing to qualified service personnel. Servicing is required when the apparatus has been damaged in any way, such as power-supply cord or plug is damaged, liquid has been spilled or objects have fallen into the apparatus, the



- apparatus has been exposed to rain or moisture, does not operate normally, or has been dropped.
- ADDITIONAL SAFETY INFORMATION**
- Apparatus shall not be exposed to dripping or splashing and no objects filled with liquids, such as vases, shall be placed on the apparatus.
- Always leave sufficient space around the product for ventilation. Do not place product in or on a bed, rug, in a bookcase or cabinet that may prevent air flow through vent openings.
- Do not place lighted candles, cigarettes, cigars, etc. on the product.
- Connect power cord only to AC power source as marked on the product.
- Care should be taken so that objects do not fall into the product.
- Do not attempt to disassemble the cabinet. This product does not contain customer serviceable components.

- IF YOUR PRODUCT OPERATES ON BATTERIES, adhere to the following precautions:**
- A. Any battery may leak electrolyte if mixed with a different battery type, if inserted incorrectly, or if all batteries are not replaced at the same time.
- B. Any battery may leak electrolyte or explode if disposed of in fire or an attempt is made to charge a battery not intended to be recharged.
- C. Discard leaky batteries immediately. Leaking batteries can cause skin burns or other personal injury. When discarding batteries, be sure to dispose of them in the proper manner, according to your state/provincial and local regulations.

Getting started

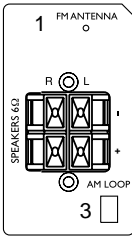
Unpacking the system

- You should have the following:
- one main unit (with 2 main speakers)
- one remote control
- one AM loop antenna
- one user manual

Connections

Back view

1. FM pigtail antenna
2. AM loop antenna jack
3. Main speaker jacks



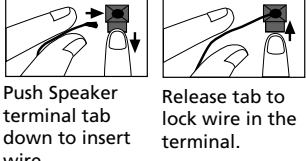
Using FM and AM antennas

Before you use your audio system, you'll want to make sure both the FM and AM antennas are positioned properly. Uncoil the FM antenna at the back of the unit, making sure it is fully extended (you may even want to tape it to the wall behind the unit if possible, the higher the better).

You'll also need to connect the AM antenna loop to the back of the unit if you listen to AM stations. Rotate the AM loop antenna for better reception.

Connecting main speakers

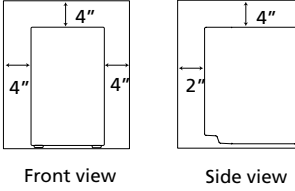
Match the red wire (on the left speaker) to red terminal for the left speaker (L) on the back of the unit and the black wire (on the left speaker) to the black terminal for left speaker (L). Follow the same procedure to connect the right (R) speaker.



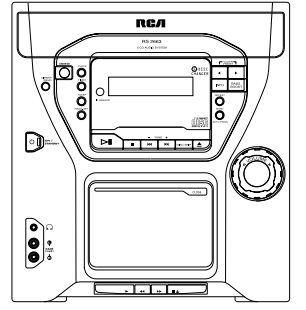
NOTE: Make sure the insulation is completely removed from the ends of the speaker wires at all connection points.

Installation

To ensure sufficient ventilation, keep the spacings shown below free from other surfaces:



Main Unit



ON/STANDBY – To turn power on or off (STANDBY mode).

Press **ON/STANDBY** to turn the system on in the previously used mode. Press **CD, TAPE, TUNER** or **AUX** (Remote only) to select the corresponding mode. Look at the display icons to identify the current mode.

SOURCE – To select among CD player, tuner, tape player and AUX sources.



OPEN/CLOSE – To open or close the disc tray.

DISC SKIP – To skip to the next CD in the tray.

VOLUME – To increase/decrease the volume.

DIMMER-DEMO – To turn the feature demonstration on or off, to adjust display brightness.

TIMER – To enter the timer setting mode and turn the timer on/off.

CLOCK – To show time and enter clock setting mode.

BASS BOOST – To turn BASS BOOST on or off.

◀▶ – To tune radio frequency; to skip CD track; to fast search through the CD.

▶▶ – To play or pause CD.

■ – To stop CD playback.

PROG-SET – To enter program mode for CD and tuner; to apply

new settings for Clock and Timer modes.

BAND/AUTO PROG. – To change between FM and AM tuner bands; to enter auto preset program in FM mode.

CD INFO – To select among disc display information.

REPEAT – To select among repeat modes.

FOLDER/PRESET ◀▶ – To select the previous or next folder in mp3/wma disc mode; to select the previous or next preset stations in tuner mode.

GAME ▶mp3/L/R – Jacks for auxiliary input connection.

ⓧ – Jack for connecting headphones

Tape Player

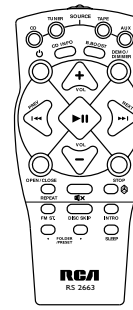
▶ PLAY

◀◀ REWIND

▶▶ FAST-FORWARD

■▲ STOP/EJECT

Remote control



Ⓢ – To turn power on or off (STANDBY mode).

CD – To select the CD player.

TUNER – To select the tuner and change the radio band.

TAPE – To select the tape player.

AUX – To select the Aux mode.

CD INFO – To select among disc display information.

B. BOOST – To turn Bass Boost on or off.

Sound features

Bass boost
Press **BASS BOOST** to turn on/off boosting the bass frequency. The BASS icon lights on the display when it is activated.

Muting audio
Press **ⓧ** on the remote control to cut or restore the sound.

Tape player

1. Press **SOURCE** repeatedly to select **TAPE**.
2. Press **■▲** to open the cassette door.
3. Insert a tape into the door and push the door closed.
4. Press **◀▶** to position the tape to the desired starting position.
5. Press **▶** to begin playback.

Clock and timer

1. Press and hold **CLOCK** until the hour flashes on the display.
2. Press **◀▶** to set the hour, and then press **CLOCK** to shift to minute digits.
3. Press **◀▶** to set the minute.
4. Press **PROG-SET** to save settings or to quit setting.

- When system is ON, you can press **CLOCK** to display the current time for about 2 seconds.
- When the system is OFF (standby), the display will turn off to save power.



Setting the timer

1. Press and hold **TIMER** until ON (timer on time) appears with the hour flashing.
2. For setting time, press **◀▶** to set the hour and then press **TIMER** to shift to the minute digits.
3. Press **◀▶** to set the minute.
4. Press **TIMER** to change to OF (timer off time) with hour flashing. Repeat steps 2 & 3 for timer off time setting.
5. Press **TIMER** to select the source. Press **◀▶** to select among TUNER, TAPE and DISC.
6. Press **TIMER** to set the volume. Adjust the volume on the main unit or press **VOL +/-** on the remote control to select the desired volume level.
7. Press **PROG-SET** to save settings or **STOP** to quit setting.

Activating the timer
Press and release **TIMER** to turn on/off the timer. The timer is active when the clock icon **Ⓢ** is lit.

Sleep mode

1. While the CD player is stopped, press **PROG-SET** to enter program mode. The system displays the next available program number: "P-01," with "P-" flashing, prompts you for the first track in the program list.
2. Press **◀▶** to select a track (press **DISC SKIP** to select a track from a different disc).
3. Immediately press **PROG-SET** to assign the selected track to the program number. After 3 seconds, you are prompted for the next track in the program list. (In CD program mode, PROG icon will be lit).

Radio

Press **SOURCE** or **TUNER** on the remote control to select TUNER.

Selecting tuner band
Press **BAND** or **TUNER** to select between AM and FM radio bands.

Tuning to a station
Press **◀▶** to select frequencies. Press and hold to start auto searching for the next available station.

Preset and tune modes

The tuner can be in either TUNE or PRESET mode. When in PRESET mode, the PROG light is on.

Presetting stations

Manually setting presets

1. Press **◀▶** to access the desired frequency.
2. Press **PROG-SET** button. The most recently accessed program location will be displayed.
3. If a different program location is preferred, press **◀▶** to select to the desired preset number (1-32).
4. Press **PROG-SET** to store the selected frequency at that preset.

Auto preset programming (FM only)

Press and hold **BAND (TUNER)** on the remote control for 2 seconds to scan stations in the FM band. The stations will then be stored as preset channels. A maximum of 32 stations can be stored.

Beware of your preset channels being erased accidentally because the scanning and storing process is automatic upon pressing the button.

You can stop the automatic scan by pressing any button, but the erased stations cannot be recovered.

Using presets

Press **◀ FOLDER/PRESET ▶** to access the previous or next preset station. The display first shows the preset program number and after a few seconds, the frequency will be displayed. (e.g. P:01 is preset 1)

Auto preset programming (FM only)

Press and hold **BAND (TUNER)** on the remote control for 2 seconds to scan stations in the FM band. The stations will then be stored as preset channels. A maximum of 32 stations can be stored.

Beware of your preset channels being erased accidentally because the scanning and storing process is automatic upon pressing the button.

Auto preset programming (FM only)

Press and hold **BAND (TUNER)** on the remote control for 2 seconds to scan stations in the FM band. The stations will then be stored as preset channels. A maximum of 32 stations can be stored.

Auto preset programming (FM only)

Press and hold **BAND (TUNER)** on the remote control for 2 seconds to scan stations in the FM band. The stations will then be stored as preset channels. A maximum of 32 stations can be stored.

Auto preset programming (FM only)

Press and hold **BAND (TUNER)** on the remote control for 2 seconds to scan stations in the FM band. The stations will then be stored as preset channels. A maximum of 32 stations can be stored.

Auto preset programming (FM only)

Press and hold **BAND (TUNER)** on the remote control for 2 seconds to scan stations in the FM band. The stations will then be stored as preset channels. A maximum of 32 stations can be stored.

You can stop the automatic scan by pressing any button, but the erased stations cannot be recovered.

Press **◀ FOLDER/PRESET ▶** to access the previous or next preset station. The display first shows the preset program number and after a few seconds, the frequency will be displayed. (e.g. P:01 is preset 1)

Auto preset programming (FM only)

Press and hold **BAND (TUNER)** on the remote control for 2 seconds to scan stations in the FM band. The stations will then be stored as preset channels. A maximum of 32 stations can be stored.

Beware of your preset channels being erased accidentally because the scanning and storing process is automatic upon pressing the button.

Auto preset programming (FM only)

Press and hold **BAND (TUNER)** on the remote control for 2 seconds to scan stations in the FM band. The stations will then be stored as preset channels. A maximum of 32 stations can be stored.

Auto preset programming (FM only)

Press and hold **BAND (TUNER)** on the remote control for 2 seconds to scan stations in the FM band. The stations will then be stored as preset channels. A maximum of 32 stations can be stored.

Auto preset programming (FM only)

Press and hold **BAND (TUNER)** on the remote control for 2 seconds to scan stations in the FM band. The stations will then be stored as preset channels. A maximum of 32 stations can be stored.

Auto preset programming (FM only)

Press and hold **BAND (TUNER)** on the remote control for 2 seconds to scan stations in the FM band. The stations will then be stored as preset channels. A maximum of 32 stations can be stored.

Troubleshooting tips

CD does not play

- Check that CD is in the tray.
- Check that CD label is facing up.
- Check that PAUSE mode is not on.
- Check that CD function is selected.
- Use CD lens cleaner.
- Clean the disc.
- Try another CD.

CD sound skips

- Clean the disc.
- Check disc for warping, scratches, or other damage.
- Check if something is causing the system to vibrate. If so, move the system.
- Make sure the speakers are at least 3 feet away from a different surface from the main unit.

CD button will not respond, or does not change discs when you press DISC SKIP
Switch to another function (TAPE, Tuner) and then back to CD.

Remote control does not work

- Check that the batteries are properly installed.
- Replace weak batteries.
- Check the system is plugged into power source.
- Point the remote directly at the system's front panel.
- Move closer to the system.
- Remove any obstacles between the remote and the system.

Disconnect the audio system from the power source before performing any maintenance.

Cleaning
Clean the exterior of the system using a soft dust cloth.

CD Player
CAUTION: This system operates with a laser. It must be opened by only a qualified technician.

Tape Player
To prevent deterioration of sound quality, periodically open the door of each deck and clean the magnetic heads, pinch roller, and capstan with a cotton bud dipped in alcohol. Also, demagnetize the head by playing a demagnetizing cassette (available through an audio equipment store).

To protect recordings on one or both sides of a tape, remove the corresponding tab. If you later want to record on both sides of the tape, affix a



EXPORTER
Thomson Inc.
P.O. Box 1976
Indianapolis, IN 46206 - 1976
©2007 Thomson Inc.
Trademark(s) © Registered
Marque(s) © Déposé(s)
Marca(s) © Registrada(s)

www.rcaaudiovideoeo.com

Printed in China / Impreso en China

Limited warranty

Limited Warranty (US)

What your warranty covers:
Defects in materials or workmanship.