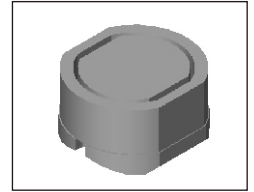


SMT Power Inductor

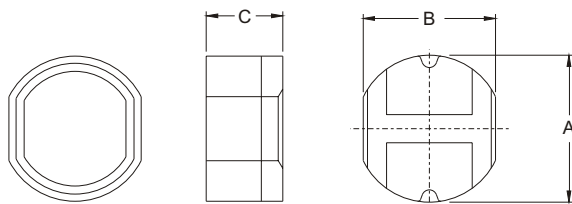
SIR74 Type

Features

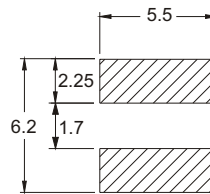
- RoHS compliant.
- Low profile (3.5mm max. height) SMD type.
- Magnetically shielded, suitable for high density mounting.
- Self-leads, suitable for high density mounting.
- High energy storage and low DCR.
- Provided with embossed carrier tape packing.
- Ideal for power source circuits, DC-DC converter, DC-AC inverters inductor applications.
- In addition to the standard versions shown here, customized inductors are available to meet your exact requirements.



Mechanical Dimension:



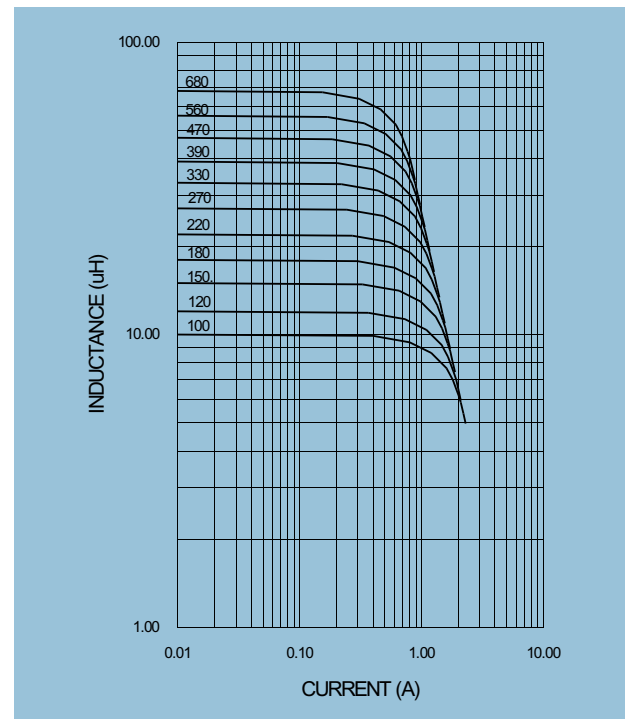
RECOMMENDED PAD PATTERNS



UNIT:mm/inch
 A = 6.2 ± 0.3 / 0.244 ± 0.012
 B = 5.6 ± 0.3 / 0.220 ± 0.012
 C = 3.2 ± 0.3 / 0.126 ± 0.012

Electrical Characteristics: 25°C, 100KHz, 0.1V

PART NO.	L ¹ (uH)	DCR (Ω) MAX	I _{rated} ² (A dc)
SIR74 - 100	10	0.140	1.00
SIR74 - 120	12	0.160	0.94
SIR74 - 150	15	0.180	0.86
SIR74 - 180	18	0.250	0.78
SIR74 - 220	22	0.320	0.76
SIR74 - 270	27	0.360	0.64
SIR74 - 330	33	0.410	0.61
SIR74 - 390	39	0.470	0.53
SIR74 - 470	47	0.510	0.50
SIR74 - 560	56	0.720	0.46
SIR74 - 680	68	0.820	0.42



1. Tolerance of inductance: ±20% for 10~27uH, ±15% for 33~68uH.
2. I_{rated} is the DC current which cause the inductance drop 10% typical of its nominal inductance without current and the surface temperature of the part increase less than 45°C.
3. Operating temperature : -20°C to 105°C (including self-temperature rise).



DELTA ELECTRONICS, INC.

(TAOYUAN PLANT CPBG) 252, SAN YING ROAD, KUEISAN INDUSTRIAL ZONE, TAOYUAN SHIEN, 333, TAIWAN, R.O.C.

TEL: 886-3-3591968; FAX: 886-3-3591991

<http://www.deltawww.com>