

BELKIN®

Network USB Hub

BELKIN®

www.belkin.com

Belkin Tech Support

US: 800-223-5546, ext. 2263

310-898-1100, ext. 2263

UK: 0845 607 77 87

Australia: 1800 235 546

New Zealand: 0800 235 546

Singapore: 65 64857620

Europe: www.belkin.com/support

Belkin International, Inc.

501 West Walnut Street

Los Angeles, CA 90220, USA

310-898-1100

310-898-1111 fax

Belkin Ltd.

Express Business Park, Shipton Way

Rushden, NN10 6GL, United Kingdom

+44 (0) 1933 35 2000

+44 (0) 1933 31 2000 fax

Belkin B.V.

Boeing Avenue 333

1119 PH Schiphol-Rijk, The Netherlands

+31 (0) 20 654 7300

+31 (0) 20 654 7349 fax

Belkin Ltd.

4 Pioneer Avenue

Tuggerah Business Park

Tuggerah, NSW 2259, Australia

+61 (0) 2 4350 4600

+61 (0) 2 4350 4700 fax

BELKIN®

Network USB Hub



User Manual

F5L009

Table of Contents

1. Introduction	1
2. Setting Up your Network USB Hub	2
3. Using the Network USB Hub Control Center.....	5
4. Appendix – Operation/Compatibility Notes.....	17
5. Information	18

Introduction

Congratulations and thank you for purchasing the Network USB Hub (the Hub) from Belkin. By connecting to your network router, this innovative sharing tool gives you a great way to enhance its capabilities, as well as those of all the USB devices connected throughout your network. It lets you access your USB devices remotely without the hassle of setting up network software. Now you can easily print to the USB printer in your home office from your living room or bedroom—through any wireless router.

1

2

3

4

5

Setting Up your Network USB Hub

1

2

The Hub works with Windows® XP and Windows Vista™ (32- and 64-bit), and Mac OS® X (v10.3~v10.4). In order to use the Hub, you must have a networking router connecting your network.

3

1. Preparing for Setup

NOTE: If you are connected to a network router that uses Dynamic Host Configuration Protocol (DHCP), which most networks do, you do not need to set up your Hub.

4

5

1.1 Plug the AC adapter into the Hub.

1.2 Check the Power LED (green). It should be illuminated.

1.3 Plug the Ethernet cable into the Hub.

1.4 Plug the other side of the Ethernet cable into your network router.

2. Installing the Software

IMPORTANT: If you do not install the software on your computer, the Hub will not work.

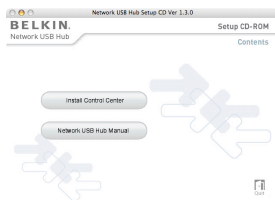
2.1 Insert the setup CD into your CD-ROM drive.

You will see the Hub Setup CD icon.

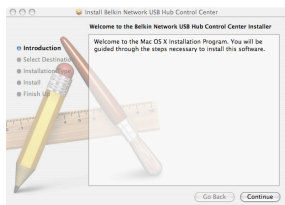
Please open it and click “Setup” icon.

Setting Up your Network USB Hub

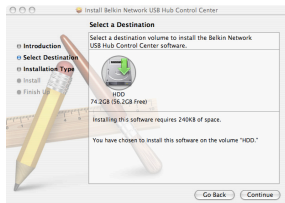
2.2 You will see the Hub Setup CD screen. Click “Install Control Center”.



2.3 You will see the “Welcome” screen. Click “Continue”.



2.4 Select a destination in which to install the software and click “Continue”.



1

2

3

4

5

Setting Up your Network USB Hub

1

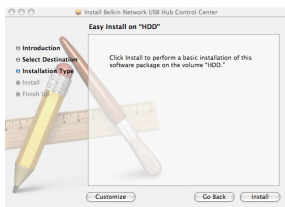
2

3

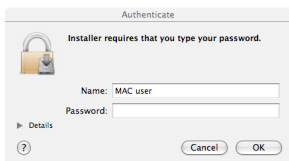
4

5

2.5 Click “Install” to start the installation.

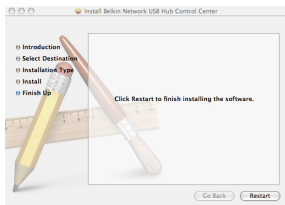


2.6 If prompted please enter name and password for authentication.



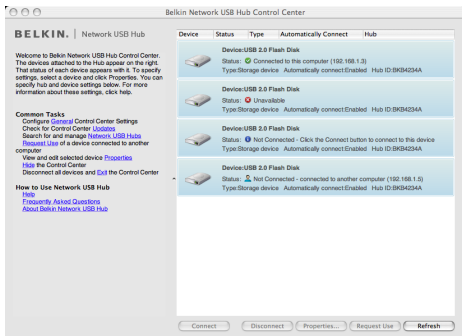
2.7 Installation is complete. Click “Restart”.

Warning: Please update your firewall and Internet security software to make sure your computer works properly with the Network USB Hub.



Using the Network USB Hub Control Center

Once the setup is completed, launch the Belkin Network USB Hub Control Center through the “Start” menu. The main Control Center (see image below) gives you a visual depiction of your connection configuration.



You can connect to a device by Ctrl+Clicking the device on the list, or by selecting it on the list, and then clicking “Connect”, on the bottom of the screen. To disconnect a device, just Ctrl+Click it on the list, or select it and then click “Disconnect”, on the bottom of the screen.

You can change device names, settings, and more by selecting the device from the list, and then clicking “Properties”.

1

2

3

4

5

Using the Network USB Hub Control Center

1

What the designations mean

2

Device: Name of the device. You can change the name by clicking “Properties”.

3

Status: Status of the device. The status changes automatically.

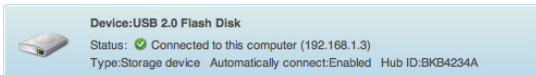
4

Type: Category of the device. This is detected automatically.

5

Automatically connect: This allows the PC to automatically connect to this device. This can be enabled or disabled in “Properties”.

Hub ID: The ID of the Hub into which the device is plugged. This is detected automatically.



Connected to this computer: Devices shown are currently connected to the computer that you are using.



Not Connected: It is available for you to use. You can connect to this device by double-clicking the bar or by clicking “Connect”.

Using the Network USB Hub Control Center



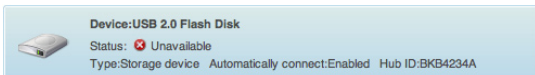
1

Not Connected: The device is being used by someone else and it is not available. You can make a request for the device by clicking “Request Use”.

2

3

4



5

Unavailable: The device has been disconnected from the Hub. It will be removed from the list when you click “Refresh”.

Using the Network USB Hub Control Center

Requesting a device when it is being used by someone else

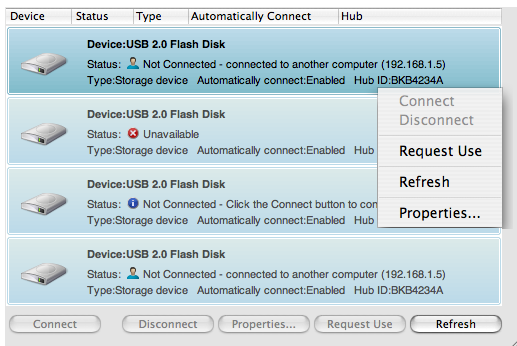
1

2

3

4

5



When someone else is connected to a device that you want to use, you can make a device request. Ctrl+Click on the device in the list and select “Request Use” from the pop-up menu, or, you can select the device from the list and click “Request Use”.

“Device Request” displays a message on the other user’s computer screen that looks like this:



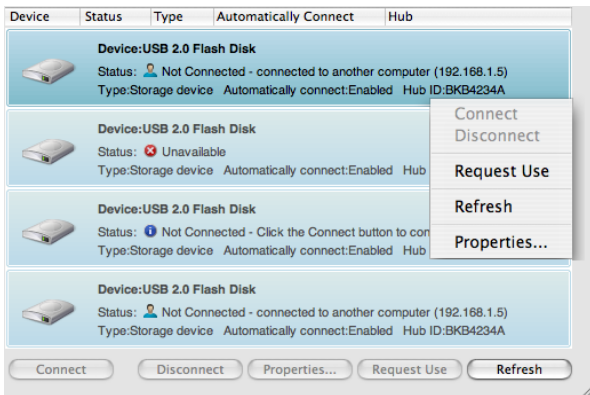
The user of the other computer must accept the request, by clicking “Yes”, in order to make it available to you.

Using the Network USB Hub Control Center

When the other user clicks “Yes”, the device will be disconnected automatically from that user’s computer and it will be available for you to use.

Changing the connection settings

You can set the Control Center to automatically connect to devices when the software launches. Selecting “Automatically Connect” simplifies the overall experience for most users; however, it may not be a suitable default setting if the devices are shared among many users.



To change the connection setting, Ctrl+Click on the device name in the list and click “Properties”; or select the device from the list and click “Properties” on the bottom.

1

2

3

4

5

Using the Network USB Hub Control Center

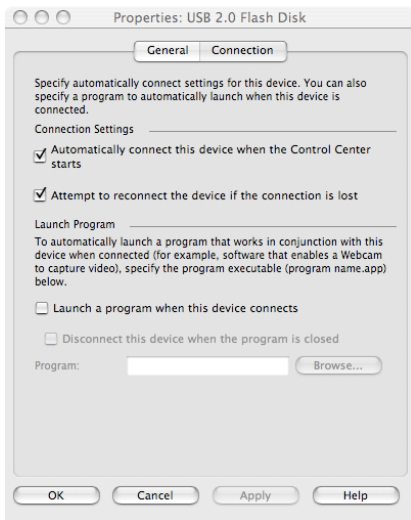
1

2

3

4

5



Click on the “Connection” tab and check or uncheck the box next to “Automatically connect this device when the Control Center starts”, depending on whether or not you want to automatically connect the device on start-up, then click “Apply”.

Using the Network USB Hub Control Center

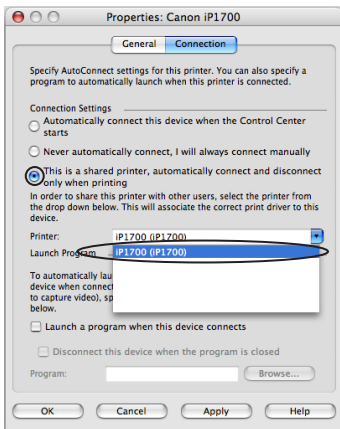
Sharing a USB printer

You can set the Network USB Hub Control Center to share any USB printers on the network.

Note: You must install the printer driver on your computer before enabling sharing.

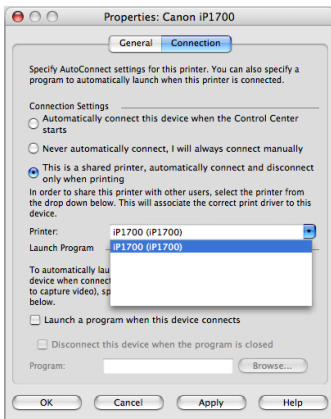
Note: You must install the Network USB Hub Control Center software on each computer that is going to access the printer.

1. Install the Network USB Hub and printer software, and driver first.
2. Select the printer from the list and click “Connect”. It will install the printer driver for the first time.
3. Repeat steps 1 and 2 on each computer that will share the printer.
4. Select the printer and click “Properties”. Click on the “Connection” tab.
5. Select “This is a shared printer, automatically connect and disconnect only when printing”.
6. Select the printer from the printer list. It should match the correct printer.
7. Click “Apply” to apply the changes.



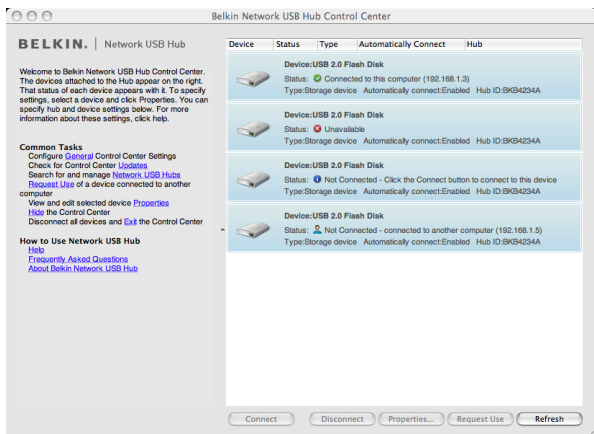
Using the Network USB Hub Control Center

-
-
-
-
-
-
-
8. This setting has to be set on all the computers on the network to enable the sharing feature correctly.



Using the Network USB Hub Control Center

Changing the Network USB Hub Control Center settings



Click the “General” link, under “Common Tasks” on the left of the “Control Center” screen to open the “Network USB Hub settings” window.

Using the Network USB Hub Control Center

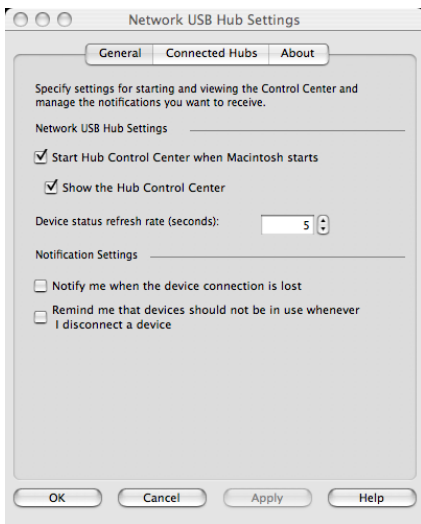
1

2

3

4

5

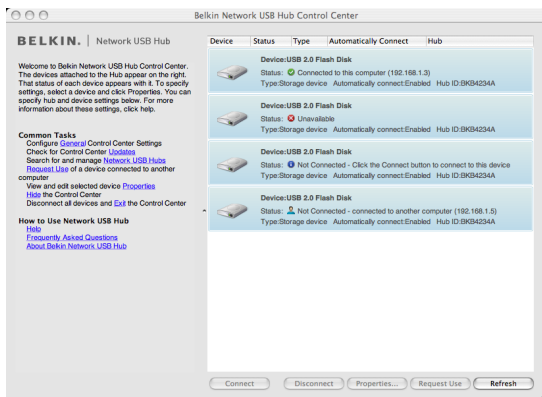


Simply check or uncheck the box to determine whether you want to launch the Network USB Hub Control Center when MAC OS starts.

Checking “Show the Hub Control Center” causes the “Control Center” screen to display when you launch the Control Center.

Using the Network USB Hub Control Center

Accessing the Network USB Hub hardware setting



1

2

3

4

5

Click the “Network USB Hubs” link, under “Common Tasks”, on the left side of the “Control Center” screen to open the “Network USB Hub settings” window.

Using the Network USB Hub Control Center

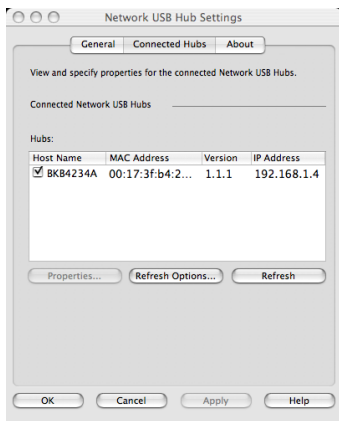
1

2

3

4

5



Select and click the Network USB Hub from the list. Then click “Properties”. Your web browser will launch and open the web page built into the Network USB Hub.

From there, you can change the advanced network settings and update the firmware for the Network USB Hub. The password for the web page is blank or none by default.

Resetting the Network USB Hub

You may need to reset the Network USB Hub to either reset the unit or to restore the factory default settings.

The reset button is located on the back of the unit. If you press and hold the button for 1 second, the unit will reset. If you press and hold the button for 5 seconds, the unit will reset and restore itself to the original factory settings.

Appendix – Operation/Compatibility Notes

Certain USB devices may not be compatible with the Hub.

Since the Network USB Hub uses virtual network technology, some USB devices (e.g., TV tuners, webcams, and USB audio devices) are not compatible with it in Mac OS. They will not appear on the Control Center even when they are attached to the Network USB Hub.

WLAN connection

The Network USB Hub's virtual network technology may not work properly if the WLAN connection is interrupted. If you have problems with the Network USB Hub or connected USB devices, please make sure that your WLAN connection is strong and stable.

The Network USB Hub can support up to 15 connections

Virtual network technology limits the number of devices the Hub can support to 15 total connections.

(Important: One connection does not equal one device; some devices involve more than one connection. For instance, a multifunction printer is typically comprised of four connections.)

The Network USB Hub and VPN

Since VPN filters the connection between the computer and other network devices, the Hub may not work with VPN enabled. If you experience difficulty with the Hub's operation, disable the VPN connection while using the Hub.

1

2

3

4

5

Information

1

2

3

4

5

FCC Statement

DECLARATION OF CONFORMITY WITH FCC RULES FOR ELECTROMAGNETIC COMPATIBILITY

We, Belkin International, Inc., of 501 West Walnut Street, Compton, CA 90220, declare under our sole responsibility that the product:
F5L009

to which this declaration relates:

Complies with Part 15 of the FCC Rules. Operation is subject to the following two conditions: (1) this device may not cause harmful interference, and (2) this device must accept any interference received, including interference that may cause undesired operation. This equipment may only be operated indoors. Operation outdoors is in violation of 47 U.S.C. 301 and could subject the operator to serious legal penalties.

CE Declaration of Conformity

We, Belkin International, Inc., declare under our sole responsibility that the F5L009, to which this declaration relates, is in conformity with Generic Emissions Standard EN55022:1998 Class B, EN50081-1, and with Generic Immunity Standard EN50082-1:1992.

Belkin International, Inc., Limited Lifetime Product Warranty

What this warranty covers.

Belkin International, Inc. ("Belkin") warrants to the original purchaser of this Belkin product that the product shall be free of defects in design, assembly, material, or workmanship.

What the period of coverage is.

Belkin warrants the Belkin product for the lifetime of the product.

What will we do to correct problems?

Product Warranty.

Belkin will repair or replace, at its option, any defective product free of charge (except for shipping charges for the product).

What is not covered by this warranty?

All above warranties are null and void if the Belkin product is not provided to Belkin for inspection upon Belkin's request at the sole expense of the purchaser, or if Belkin determines that the Belkin product has been improperly installed,

Information

altered in any way, or tampered with. The Belkin Product Warranty does not protect against acts of God such as flood, lightning, earthquake, war, vandalism, theft, normal-use wear and tear, erosion, depletion, obsolescence, abuse, damage due to low voltage disturbances (i.e. brownouts or sags), non-authorized program, or system equipment modification or alteration.

How to get service.

To get service for your Belkin product you must take the following steps:

1. Contact Belkin International, Inc., at 501 W. Walnut St., Compton CA 90220, Attn: Customer Service, or call (800)-223-5546, within 15 days of the Occurrence. Be prepared to provide the following information:
 - a. The part number of the Belkin product.
 - b. Where you purchased the product.
 - c. When you purchased the product.
 - d. Copy of original receipt.
2. Your Belkin Customer Service Representative will then instruct you on how to forward your receipt and Belkin product and how to proceed with your claim.

Belkin reserves the right to review the damaged Belkin product. All costs of shipping the Belkin product to Belkin for inspection shall be borne solely by the purchaser. If Belkin determines, in its sole discretion, that it is impractical to ship the damaged equipment to Belkin, Belkin may designate, in its sole discretion, an equipment repair facility to inspect and estimate the cost to repair such equipment. The cost, if any, of shipping the equipment to and from such repair facility and of such estimate shall be borne solely by the purchaser. Damaged equipment must remain available for inspection until the claim is finalized. Whenever claims are settled, Belkin reserves the right to be subrogated under any existing insurance policies the purchaser may have.

How state law relates to the warranty.

THIS WARRANTY CONTAINS THE SOLE WARRANTY OF BELKIN. THERE ARE NO OTHER WARRANTIES, EXPRESSED OR, EXCEPT AS REQUIRED BY LAW, IMPLIED, INCLUDING THE IMPLIED WARRANTY OR CONDITION OF QUALITY, MERCHANTABILITY OR FITNESS FOR A PARTICULAR PURPOSE, AND SUCH IMPLIED WARRANTIES, IF ANY, ARE LIMITED IN DURATION TO THE TERM OF THIS WARRANTY.

Some states do not allow limitations on how long an implied warranty lasts, so the above limitations may not apply to you.

IN NO EVENT SHALL BELKIN BE LIABLE FOR INCIDENTAL, SPECIAL, DIRECT, INDIRECT, CONSEQUENTIAL OR MULTIPLE DAMAGES SUCH AS, BUT NOT LIMITED TO, LOST BUSINESS OR PROFITS ARISING OUT OF THE SALE OR

1

2

3

4

5

Information

1

2

3

4

5

USE OF ANY BELKIN PRODUCT, EVEN IF ADVISED OF THE POSSIBILITY OF SUCH DAMAGES.

This warranty gives you specific legal rights, and you may also have other rights, which may vary from state to state. Some states do not allow the exclusion or limitation of incidental, consequential, or other damages, so the above limitations may not apply to you.