



OWNER'S GUIDE

INSTALLATION GUIDE



# 3.5" Portable Media Player 20GB Hard Drive

## NON-TRANSFERABLE LIMITED ONE YEAR CONSUMER WARRANTY

Directed Electronics, Inc. (Directed) promises to the original purchaser that the new automotive video monitor and/or source unit(s) (the Product) that is purchased and installed from a Directed authorized dealer more than ninety (90) days after the purchase of a new vehicle are warranted for a period of one (1) year from date of purchase of the Product.

Directed promises to the original purchaser that all video accessories will be free from defects in materials and workmanship under normal use and condition for a period of ninety (90) days after the date of purchase. A sales receipt and/or warranty registration card is required to provide proof of date of purchase of the Product or accessories.

Should the Product be determined defective during the applicable warranty period, the defect(s) will be repaired or replaced with a new or reconditioned part(s), at Directed's option. To obtain warranty service, the Product must be returned to a Directed authorized dealer along with proof of purchase and installation.

Note: This warranty does not cover labor costs for the removal and reinstallation of the Product. **IN ORDER FOR THIS WARRANTY TO BE VALID, YOUR PRODUCT MUST BE SHIPPED WITH PROOF OF PURCHASE AND INSTALLATION BY AN AUTHORIZED DIRECTED DEALER. ALL PRODUCTS RECEIVED BY DIRECTED FOR WARRANTY REPAIR WITHOUT PROOF OF DIRECTED DEALER INSTALLATION WILL BE DENIED.**

This warranty is non-transferable and does not apply to any Product that has been modified or used in a manner contrary to its intended purpose, and does not cover damage to the Product caused by installation or removal of the Product. This warranty is **VOID** if the product has not been purchase from an authorized Directed dealer or has been damaged by accident or unreasonable use, negligence, acts of God, neglect, improper service or other causes not arising out of defect in materials or construction. This warranty does not cover the elimination of externally generated static or noise, or the correction of antenna problems or weak television reception, damage to tapes, video games, software, camcorders, discs, speakers, accessories or vehicle electrical systems, cosmetic damage or damage due to negligence, misuse, abuse, failure to follow operating instructions, accidental spills or customer applied cleaners, damage due to environmental causes such as floods, airborne fallout, chemicals, salt, hail, windstorms, lightning or extreme temperatures, damage due to accidents, road hazards, fire, theft, loss or vandalism, damage due to improper connection to equipment of another manufacturer, modification of existing equipment, use of a faulty tape cartridge or cleaning of the VCR head, or Product which has been opened or tampered with for any reason or which has been damaged due to alteration or service performed by anyone other than Directed Electronics, Inc.

**ALL WARRANTIES INCLUDING BUT NOT LIMITED TO EXPRESS WARRANTY, IMPLIED WARRANTY, WARRANTY OF MERCHANTABILITY, FITNESS FOR PARTICULAR PURPOSE, AND WARRANTY OF NON-INFRINGEMENT OF INTELLECTUAL PROPERTY ARE EXPRESSLY EXCLUDED TO THE MAXIMUM EXTENT ALLOWED BY LAW, AND DIRECTED NEITHER ASSUMES NOR AUTHORIZES ANY PERSON TO ASSUME FOR IT ANY LIABILITY IN CONNECTION WITH THE SALE OF THE PRODUCT. DIRECTED HAS ABSOLUTELY NO LIABILITY FOR ANY AND ALL ACTS OF THIRD PARTIES INCLUDING ITS LICENSED DEALERS OR INSTALLERS. IN NO EVENT WILL DIRECTED ELECTRONICS, INC. BE LIABLE FOR ANY INCIDENTAL, SPECIAL OR CONSEQUENTIAL DAMAGES (INCLUDING LOSS OF PROFITS), BY PURCHASING THIS PRODUCT, THE CONSUMER AGREES AND CONSENTS THAT ALL DISPUTES BETWEEN THE CONSUMER AND DIRECTED SHALL BE RESOLVED IN ACCORDANCE WITH CALIFORNIA LAWS IN SAN DIEGO COUNTY, CALIFORNIA.**

Some states do not allow limitation on how long an implied warranty lasts. In such states, the limitations or exclusions of this Limited Warranty may not apply. Some states do not allow the exclusion or limitation of incidental or consequential damages. In such states, the exclusion or limitation of this Limited Warranty may not apply to you. This Limited Warranty gives you specific legal rights, and you may have other rights which vary from state to state.

Some states do not allow the exclusion or limitation of incidental or consequential damages. In such states, the exclusion or limitations of this Limited Warranty may not apply to you. This Limited Warranty gives you specific legal rights and you may have other rights which vary from state to state.

# ***Table of Contents***

---

Safety Instructions . . . . .	5
Introduction . . . . .	6
How to Use this Guide . . . . .	7
What's Included . . . . .	8
Getting Started . . . . .	9
Overview . . . . .	9
Operating Menu Displays . . . . .	11
Main Menu . . . . .	11
Video /Music /Photo Menu . . . . .	11
FM Radio . . . . .	12
Voice/AV Recording . . . . .	12
Set Up Menu . . . . .	13
USB Hard Disk . . . . .	13
Lock Switch . . . . .	14
SD/MMC Card Slot . . . . .	14
Remote Control . . . . .	15
Li-Ion Battery Recharging . . . . .	16
Battery Consumption Reference . . . . .	17
Battery Replacement . . . . .	17
Utility CD . . . . .	18
Connect & Disconnect from PC . . . . .	19
Connect PMP3520 to Computer . . . . .	19
For Systems with Windows 98SE . . . . .	22
Format PMP3520 and disk maintenance . . . . .	22
Safely Disconnect PMP3520 from Computer . . . . .	23
Basic Usage . . . . .	24
Power On and Off . . . . .	24
Volume Adjustment . . . . .	25
PMPSync . . . . .	25
Install & Execute . . . . .	26
Buttons . . . . .	26
Edit Tags for Files in PC: . . . . .	28
Create Music Playlist—Example . . . . .	34
Video . . . . .	36
Music . . . . .	42
Photo . . . . .	45

FM Radio . . . . .	.48
Voice Recording . . . . .	.50
AV Recording . . . . .	.52
SD/MMC card . . . . .	.54
Signal Input and Output . . . . .	.55
On The Go . . . . .	.56
Setting . . . . .	.58
Display Tab .....	.58
Photo Tab .....	.59
Record Tab .....	.60
System Tab.....	.61
Info Tab .....	.63
Specifications . . . . .	.65
Firmware/Software Download/Upgrade . . . . .	.66
Upgrade Firmware .....	.66
Upgrade Software .....	.67

# ***Safety Instructions***

---

Completely read the safety instructions carefully. Please retain this guide in a convenient location for future reference.

1. Keep the PMP3520 away from humidity.
2. Keep the PMP3520 away from long exposure to the sunlight.
3. Never pour any liquid into the PMP3520 to avoid damages or electrical shock.
4. If any of the following situations occurs, get the PMP3520 checked by service personnel:
  - Liquid has penetrated into the PMP3520.
  - The PMP3520 has been exposed to moisture.
  - The PMP3520 is not functioning or you can not get functions to work correctly according to this guide.
  - The PMP3520 has dropped and damaged.
5. DO NOT use the PMP3520 in the following situations (death or injury could result):
  - While driving a vehicle.
  - While operating machinery.
  - Viewing videos/photos while walking.
  - In any situations or environments requiring concentration.
6. If you need to format the PMP3520's hard disk, please select FAT32 format. DO NOT PARTITION the PMP3520's HARD DISK.
7. DO NOT use any liquids or aerosol sprays to clean this device. Use a clean-soft dampened cloth instead.
8. Adjust to proper volume while listening with earphone to avoid damage to your hearing.
9. Caution: Use of an incorrect battery may cause explosion! Follow the instruction on the battery section to use battery properly!
10. A battery that can no longer be recharged should be disposed of properly in accordance with local regulations.

# *Introduction*

---

Congratulations for choosing the PMP3520, by Directed Video. This high performance product has been designed and engineered by Directed Electronics, the industry leader in high quality automotive security, audio, and video equipment since 1990.

The PMP3520 is a high performance portable multimedia player and recorder which comes with a Li-Ion rechargeable-removable battery. With the PMP3520, you can play audio or video files in various formats, and record audio/video. It also provides convenient portable storage, utilizing a USB port, to allow you to store and manage personal data.

Following are the main features of the PMP3520:

- **Video Player**—supports MPEG-4 SP, DivX 3.11/4.x/5.x, Motion JPEG, and WMV-9 SP@ML format video playback.
- **Audio Player**—supports MP3 (MPEG1 Layer2, Layer3), WAV (LPCM, ADPCM), and WMA (WMA-9 Layer 2a) format audio files playback.
- **Photo Viewer**—supports JPEG, GIF, BMP, and TIFF photos. You can download photos to the PMP3520 and browse them.
- **Recording**—supports recording function for audio and video. You can use this function to record voice, music, and video.
- **USB Storage**—supports data storage through a USB port. You can use the built-in 20GB hard disk to store any data and view that data on a computer with Windows Explorer. Also supported is USB OTG.
- **SD/ MMC Card Slot**—supports SD/ MMC cards. You can insert and play video, photo, and music files in SD-MMC folder of the PMP3520.

# ***How to Use this Guide***

---

This guide provides instructions and illustrations on how to install and operate the PMP3520. With step-by-step instructions, we will guide you through the PMP3520 driver installation process. If you are not familiar with computer operating systems, we suggest you learn more from this manual and help documents on the Driver and Recovery CD before installing the PMP3520 driver.

**What's Included**—shows you all PMP3520 accessories in the package. Please verify that all of them are included when you open the box. If any item is damaged or missing, please contact your dealer directly.

**Get Started**—introduces the function keys of the PMP3520, the LCD Display status in different modes, and how to recharge the Li-Ion battery.

**Connect and Remove from Computer**—describes how to connect and remove the PMP3520 from your computer.

**Basic Usage**—describes how to operate all functions of the PMP3520. We suggest you to read this chapter carefully before using the PMP3520.

**Specifications**—PMP3520 specifications.

**Driver and Recovery CD**—describes how to use the Driver and Recovery CD, and how to upgrade the firmware and software.

# ***What's Included***

---

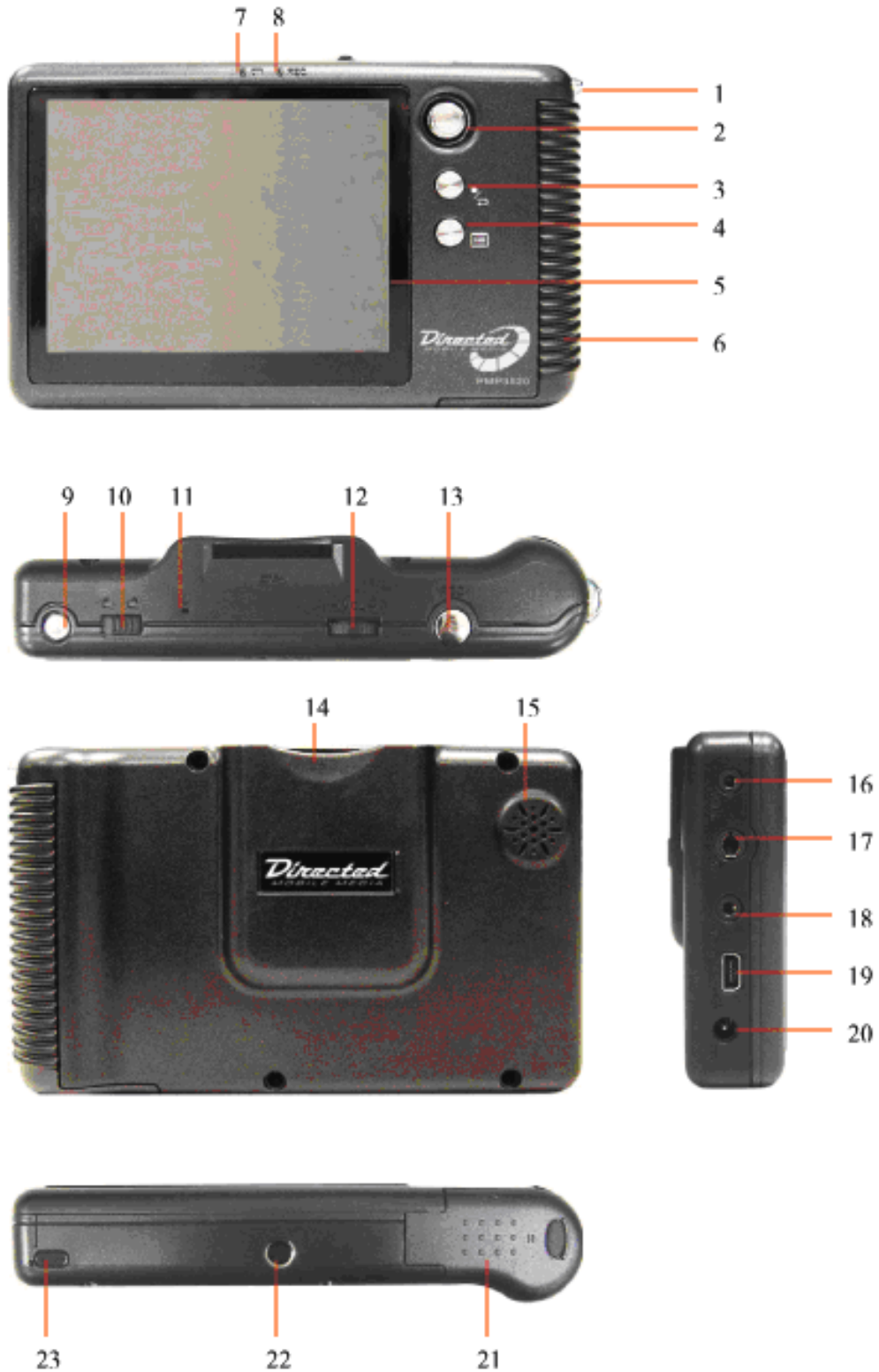
- PMP3520
- Strap
- Stereo Earphones
- AC Adapter
- AV-in/out Cable
- Remote Control
- USB Cable
- USB Cable (OTG)
- Handy Bag
- Driver and Recovery CD
- Battery (qty 2)
- Audio Line In Cable

**NOTE:** *The PMP3520 battery should be charged **ONLY** with the provided adapter!*



# Getting Started

## OVERVIEW



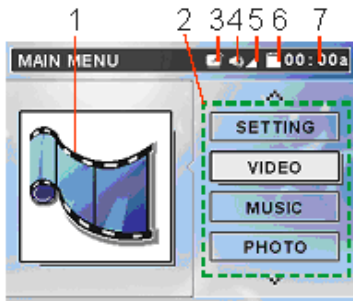
1.	Strap Hole	Attach the hand-strap here.
2.	Navigation key	The 4-way Navigation key for menu selections.
3.	■/↶	Press to stop or go-back from action.
4.	☰	Press to stop and display menu, or go to the previous menu.
5.	LCD Display	Show menus and selection playing.
6.	Hold Handle	The hold handle of the PMP3520.
7.	Power LED	This LED is illuminated when the PMP3520 is powered on, and flashes when charging the battery.
8.	Record LED	This LED is illuminated when recording.
9.	Power On/Off	Press to power On/Off. Hold down for 5 seconds for reset if system locks up.
10.	Lock Switch	When this Switch is locked, all key press commands are disabled. Including power On/Off switch.
11.	MIC	Built-in microphone for voice recording.
12.	Volume Control	Push it to the right to increase volume, to the left to decrease volume. Press it down to mute.
13.	REC[●]	Press to start or stop recording.
14.	SD/MMC slot	Insert SD/MMC card to retrieve data.
15.	Speaker	Built-in speaker.
16.	AV Line-In Jack	Plug AV cable here to enable AV Line-In recording.
17.	Earphone Jack	Plug the earphones here.
18.	AV Line-Out Jack	Plug the AV cable here to connect the PMP3520 to an external display (TV).
19.	USB Connector	Connect the mini USB connector of the supplied USB cable here, and the other end to PC host/OTG equipment.
20.	DC-In Jack	Plug in the supplied AC Adapter here to recharge the battery.
21.	Battery cap	Press the latch and push the cap forward to replace the rechargeable battery.
22.	Tripod Screw Hole	Secure a tripod* here to hold the PMP3520.
23.	IR Receiver	Implements commands from remote control.

\* Tripod is not included.

# Operating Menu Displays

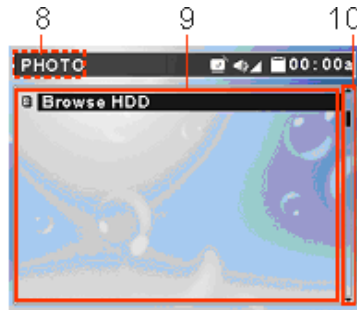
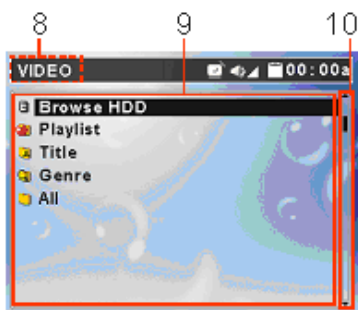
Power on the PMP3520, the main menu on LCD will display after the boot-up animation. Following are the instructions for each menu option.

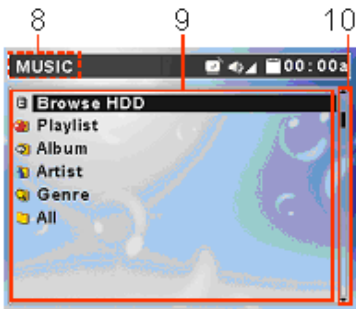
## MAIN MENU



1. Function Icon: Visually indicates selected function.
2. Menu List: List function options, such as Video, Music, Photo, etc.
3. Alarm: Indicates alarm clock is set.
4. Voice: Indicates voice On or Off.
5. Volume: Shows volume status.
6. Battery: Shows battery status.
7. Time: Shows current time (setup required).

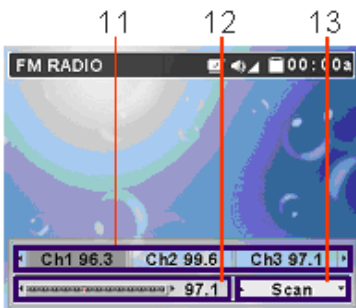
## VIDEO /MUSIC /PHOTO MENU





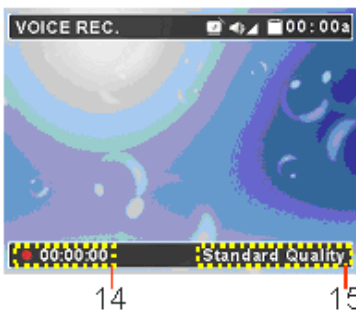
8. Menu Title: Show the selected menu title.
9. List: All files in a selected menu.
10. Scroll bar: Indicates additional files available.

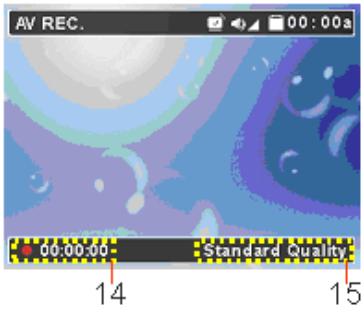
## FM RADIO



11. Memorized Stations: 8 FM stations can be set into memory.
12. Channel Frequency: Current FM frequency.
13. Select Scan or Fine Tuning.

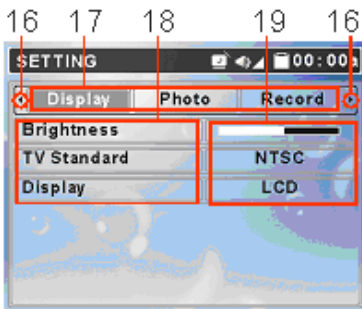
## VOICE/AV RECORDING





- 14. Recording Time: Recording elapse time (hh:mm:ss).
- 15. Recording Quality: Indicate selected and operating recording quality.

## SET UP MENU



- 16. Scroll bar: Mean more tabs are available.
- 17. Tabs: Include Display, Photo, Record, System, and Info Tabs.
- 18. Setting Items: List tab item for adjusting.
- 19. Setting Options: Show setting options

## ***USB Hard Disk***

.....

The PMP3520 contains a 20GB mini-hard disk. You can operate the PMP3520 as an USB hard disk and copy personal data to it. Simply connect the PMP3520 to your computer, and use Windows Explorer to copy and manage your data.

# ***Lock Switch***

---

The PMP3520 has a Lock Switch to avoid accidental operation. Slide the Lock Switch to lock position while power is on. If any control button is pressed the “Locked!” message displays to indicate all function keys are disabled.



If the PMP3520's power is Off, and the lock-switch is in the lock position, the unit will not turn on.

# ***SD/MMC Card Slot***

---







The PMP3520 has an SD/MMC slot. You can insert a Secure Digital Card or MultiMedia Card into the slot to allow your photos, videos, or music to be played or displayed on the PMP3520.



# Remote Control

---

The PMP3520 remote control provides the following functions:

-  OFF: press to power off the PMP3520.
- TV/LCD: press to switch the video output device between TV and the PMP3520.
-  REC: press to start to record of each function.
-  Exit: press to stop playback or go back to previous menu.
- MENU: press to go back to Main Menu.
- : press to select previous/next item on menu list. These two buttons function the same as pushing the Navigator button up/down.
- : press to rewind/fast-forward the playback. These two buttons function the same as pushing Navigator button left/right.
- : press to play or pause the playback. This button functions the same as pressing down with the Navigator button.

**Note:** *The Power button on the remote control can only power off the PMP3520, not power it on.*

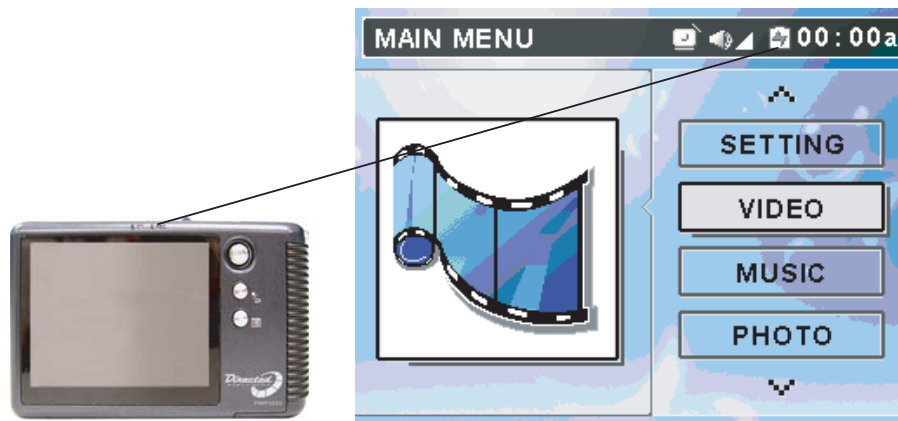


# Li-Ion Battery Recharging

---

The PMP3520 comes with two Li-Ion rechargeable and removable batteries. Charge the battery completely before using the PMP3520 for the first time by following the steps below:

1. Connect the supplied AC Adapter to AC outlet, and plug in the other end of the AC Adapter to the DC in-jack of the PMP3520.
2. While recharging, the power LED above the LCD screen will flash. If you turn on the PMP3520 while recharging, you will see the power charging indication at the top of the LCD display.



3. When the battery is fully charged, the Power LED will stop flashing. Disconnect the AC Adapter from the PMP3520.

**NOTE:** Charge the PMP3520 **only** with the supplied AC Adapter.

**NOTE:** Do **NOT** open the battery cap while power is on.

**NOTE:** The unit should not be left on the AC adapter for long periods of time after battery is fully charged. This could damage the battery. The unit should be played on the internal battery until it is completely drained. If the unit is turned off for a month, charge the battery to retain full efficiency and life. The battery should be completely charged before use when fully discharged, new, or after not being used for a long period of time. Due to the internal clock and IR sensor operation there is a continuous battery drain even while the unit is off. The battery will discharge when not being used.



## BATTERY CONSUMPTION REFERENCE

The PMP3520 uses a 2200mAh, 3.7V, 1 Cell rechargeable removable Li-Ion battery. The battery consuming reference will vary in different depending on the operating mode. A fully recharged battery has the following useful playback/recording time:

- Video Playback/Video Record: can be used for about 5 hours.
- Music Playback/Music Record: can be used for about 7.5 hours.

## BATTERY REPLACEMENT

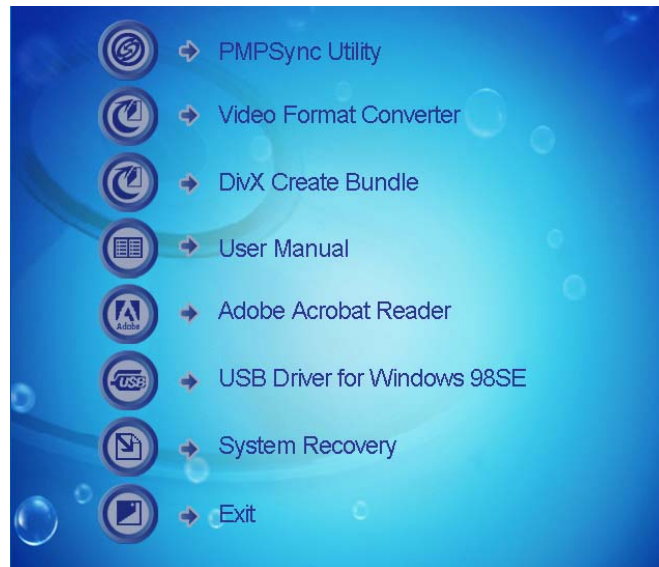
Ensure you charge your second battery and keep it on hand. To remove the battery, open the battery cap, hold down the power cap button and push it forward to open. Pull out the battery inside and insert the fully charged battery. When convenient, remember to charge the discharged battery.



# Utility CD

---

The PMP3520 package includes a Utility CD (to be used on a PC). Insert the supplied CD into your CD-ROM, and the CD will auto-run the Setup program. On your computer screen, you will see the following display.




- PMPSync Utility: for PMP3520 file management and synchronizing.
- Video Format Converter: Video converter utility for converting the format of video files.
- DivX Create Bundle: Free trial version of DivX Create Bundle provides the tools to create and play DivX videos with advanced features. For the full version of DivX Create Bundle you need to register with the serial number from the back of the CD case)
- User Manual: User manual in PDF format.
- Adobe Reader: Adobe Reader for opening PDF files.
- USB Driver for Windows 98SE: USB Driver for Windows 98 operating system.
- System Recovery: Format and restore the media player system back to factory default settings. To restore the system you need to input the serial number from the back of CD case.
- Exit: Exit and close the Setup program

**NOTE:** System Restore can only be used on computers running Windows 2000 or XP. Ensure that the PMP3520 is connected to the computer prior to running System Restore.

# Connect & Disconnect from PC

---

## CONNECT PMP3520 TO COMPUTER

1. Press the  button to power on the PMP3520.



2. Plug the mini-end of the supplied USB cable to the PMP3520, and the other end to your computer's USB port.



3. Once the PMP3520 is connected to your computer, it should be detected by your computer operating system automatically. You will see the following two messages on the PMP3520.

**NOTE:** While the first message temporarily displays below and the computer is connected to the PMP3520, **DO NOT** press the REC button! This activates the automatic download function (the entirety of the PC hard drive will start to download to the PMP3520!





**NOTE:** For Windows 98SE users, a driver is required to activate the PMP3520 on your computer. Refer to Upgrading Software/Firmware section of this manual for installation instructions for this driver.

4. After connection is initialized the following window will display on your computer.

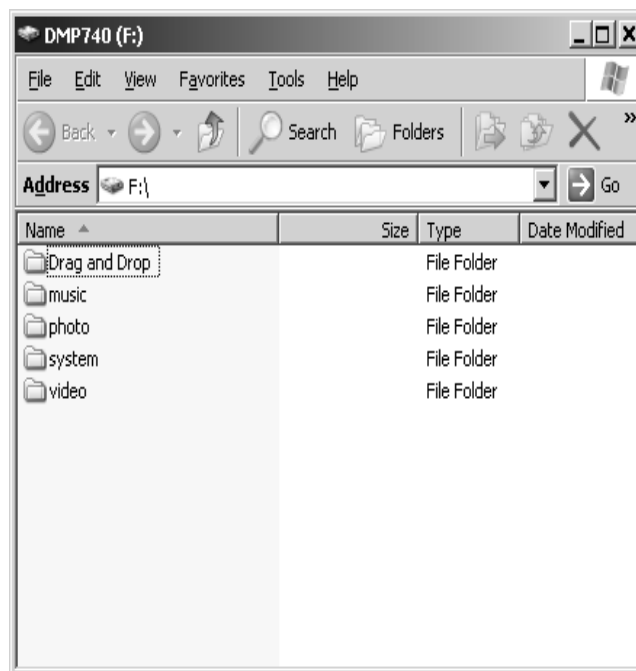


5. Scroll down and select "Open Folder . . ." to use Windows Explorer to view the contents of the PMP3520's hard drive.

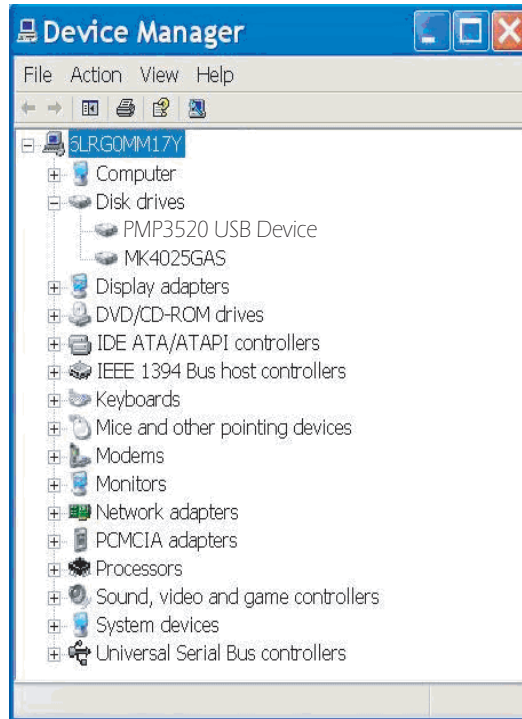


6. You can then move, copy, or delete files using Windows Explorer.

**Note:** In the example shown below the drive in the PMP3520 is identified as drive F: The drive letter may be different depending upon the configuration of the computer being used.



7. After connection is initialized, if your computer operating system fails to recognize the PMP3520 as a hard disk, then go to [Device Manager] by clicking "Start"→"Setting"→"Control Panel"→"System"→"Hardware", and look for [DMP3520 USB Device] under [Disk Drive] to check connection status. If the connection is failed, you will not find under Disk Drives a drive with a similar name such as [DMP3520 USB Device]. This is the hard drive in the PMP3520. Repeat this procedure from step 2 to connect the PMP3520 to your computer.



## FOR SYSTEMS WITH WINDOWS 98SE

After connecting the PMP3520 to a Windows 98SE operating system computer, the Windows system will detect the PMP3520 and ask to install driver. Place the supplied driver CD in the CD-ROM drive, and refer to the Utility CD section to complete the driver installation.

## FORMAT PMP3520 AND DISK MAINTENANCE

**NOTE:** *If you format the PMP3520 hard disk, all data on the hard disk will be erased! You should first copy all the data to your PC before starting the format procedure. The hard disk must be formatted using FAT32. Then re-install system files and directory names from your PC to the PMP3520*

We strongly suggest that you do **not** format the PMP3520 hard disk! The PMP3520 display interfaces will not function correctly if the hard disk is formatted. If you do need to format PMP3520 hard disk, connect the PMP3520 to your computer first and format it with the Windows formatting tool. When formation is completed, please refer to the Upgrading Software/Firmware sections of this manual for procedures to recover the system files, software, and firmware.

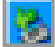
**NOTE:** The [www.directedmobilemedia.com](http://www.directedmobilemedia.com) web site will have the latest version of the software/firmware.

**NOTE:** Use Windows Disk Defragmenter utility or other defragmenter tool to unfragment the PMP3520 hard disk to improve hard disk access speed and for longer battery life.

## ***Safely Disconnect PMP3520 from Computer***

---

After managing files or updating firmware, please follow the steps below to safely disconnect the PMP3520 from the computer:

1. When the PMP3520 is connected to the computer, the  icon will be shown on computer system tray (lower right corner of the computer's screen). To disconnect the PMP3520, first close all the related PMP3520 screens. Right click the icon to bring up Safely Remove USB Mass Storage Device box. If there is more than one box which displays, right click the top or uppermost box.



2. When the following message displays, the PMP3520 can be safely disconnected from the computer.




# Basic Usage


---

## POWER ON AND OFF



1. Press  button once to power on the PMP3520. After startup animation start-up, you will see the main menu and can then continue the use of the PMP3520.

**NOTE:** *If you locked the Lock Switch before powering on, the power will not turn on. Unlock the Lock Switch and press the power button.*

2. To power off the PMP3520, press the  button again. The following message will display, and the PMP3520 will shut down.



**Note:** *If the PMP3520 can not be shut down by one short press, press and hold the power button for 5 seconds, this forces power off*



*with reset.*

## VOLUME ADJUSTMENT




1. To change the volume level, push the Volume Control left/right. The volume status icon at the top of the LCD screen changes while adjusting volume. There are 16 volume levels.



2. To mute the volume, press Volume Control button down. Volume status icon display as follows:



**Note:** If the earphones are plugged in, this icon will display as .


## ***PMPSync***

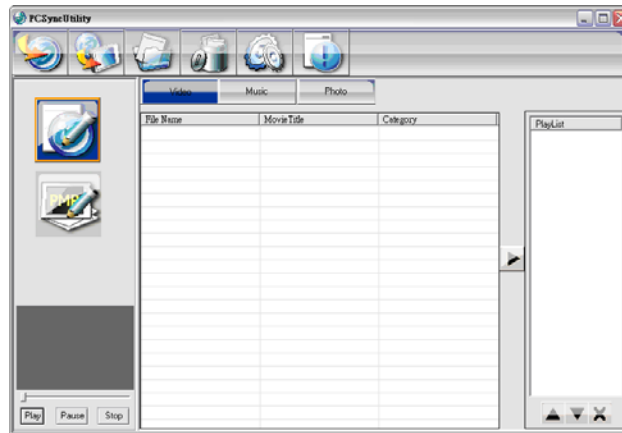
---

The PMP3520 supports files to be sorted by categories, such as Title, Artist, Album, Category, or Playlist with the bundled PMPSync utility. With this utility, you can define or edit category tags to append to each file and transfer them to the PMP3520. Only files transferred with the utility, can they be sorted in categories predefined with the utility or ID3 tags.

**NOTE:** Only MP3 music will be sorted via ID3 tags. The other supported types of music, video, and photo files will need PMPSync to define tags.

## INSTALL & EXECUTE

To install PMPSync, refer to the Utility CD section for installation. To execute, click the  shortcut on the desktop, or PMPSync, click Start"→"Programs"→"PMPSync"→"PMPSync". The screen for this utility will be shown as given below.



## BUTTONS

Buttons on PMPSync are categorized and described as following:

- Tool Bar



1. Media Import: Import multimedia files from any directory in computer.
2. Export to PMP: Export imported multimedia files to the PMP3520.
3. Create New Photo Album: Create a new album to categorize and store photos.
4. Setting: Set Synchronize mode.
5. Delete: Delete selected files from list. If the source device is PC, the files are only removed from the list. When source device is the PMP3520, a dialog box will display a confirm message. Press OK to delete the files from the PMP3520.
6. Help: Help file or other information regarding PMPSync.

- Source



1. PC: Select default folder created by PMP Sync in your PC as the file source to import.
2. PMP: Select player as file source to import.
  - Media Tabs



1. Video: Video files are listed.
2. Music: Music files are listed.
  - Media Player



Preview window for media play. Select a music/video file and press ► to play. Pressing the || or ■ button, respectively pause and stop the playback.

- Media List Panel

File Name	Movie Title	Category

Files imported to PMPSync will be listed in the Media List Panel for creating and editing category tags. The category tags will vary depending upon the media types.

- Add and Remove Buttons



Add: Press Add button to upload selected file(s) to Playlist.



Remove: Press Remove to remove selected file(s) from Playlist.


- Playlist Panel

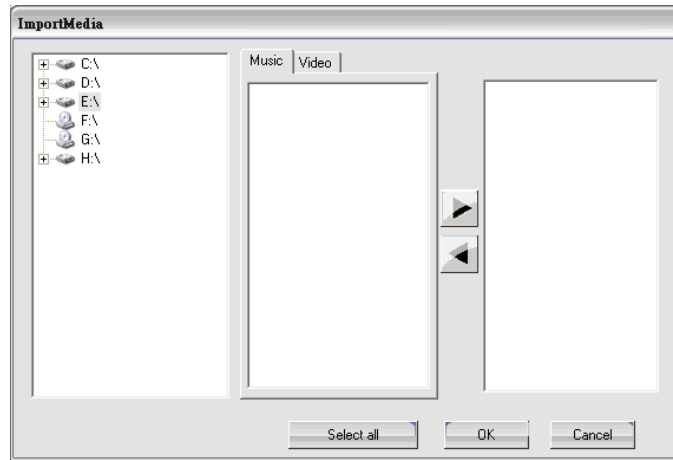


Playlist: List all files which will be added to playlist. You can use ▲ to move up, ▼ to move down, or X to clear the playlist.

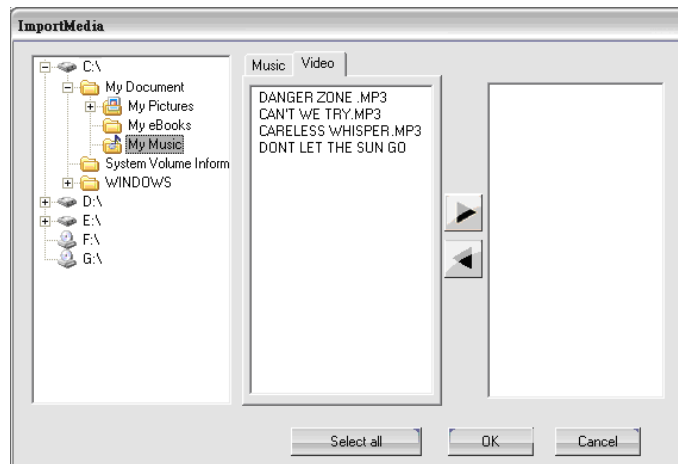
## EDIT TAGS FOR FILES IN PC:

1. To execute, click the  shortcut on the desktop, or use PMPSync by clicking Start → Programs → PMPSync → PMPSync.
2. Turn on and connect the PMP3520 to your PC with the supplied USB cable.
3. Press  button to select the source device to be the PC.

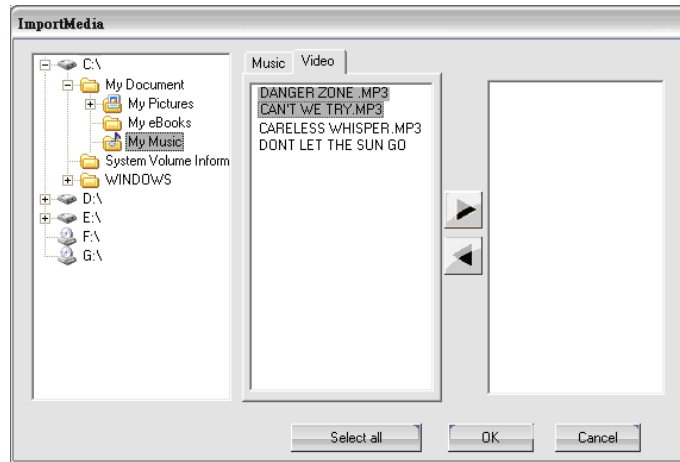
4. Press  button to bring up the Import Window to import files from the PC.





5. Select the **Video** or **Music** tab on Listing Panel for the types of files that you will edit.
6. Click on folder to navigate and locate media files. If the **Music** tab is selected, only the music files in the folder will be displayed in Viewing Panel.

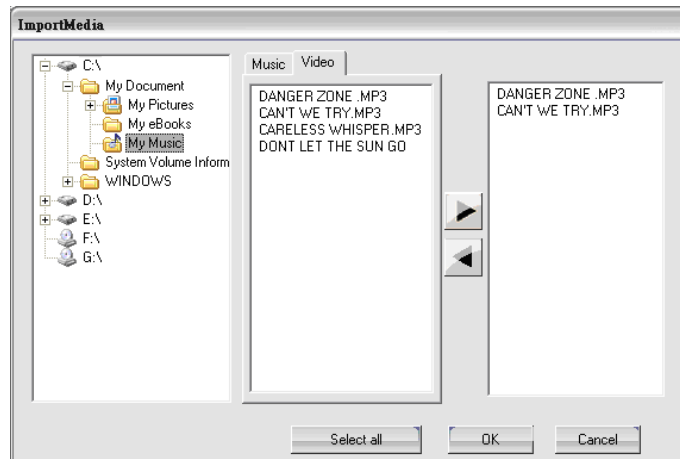




7. In the middle column, select one or multiple files for later editing.

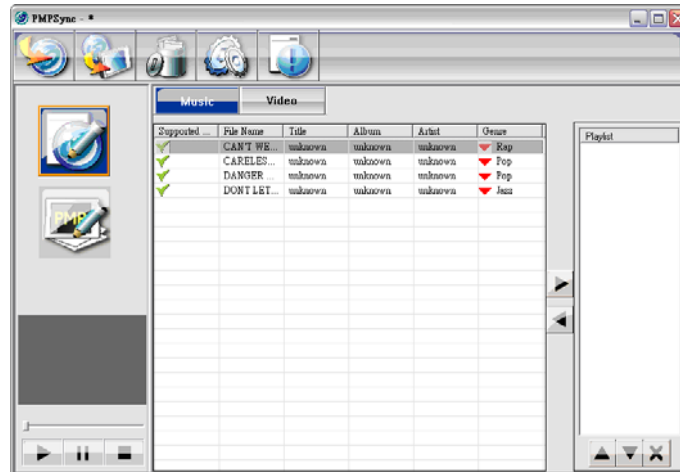


**NOTE:** You can use Shift or CTRL key to select multiple files.


8. Press the  button to add the selected files to File Listing Panel. Or press  to import all files in the directory.



9. Repeat Steps 5 thru 8 if to add more files. To remove a file from File Listing Panel, highlight the file and press the  button to remove it.
10. Press  button to go back to main window. The files are displayed on Media List Panel as below with their category tags. If a file is not defined with any tag, "unknown" will be shown in the associated category.



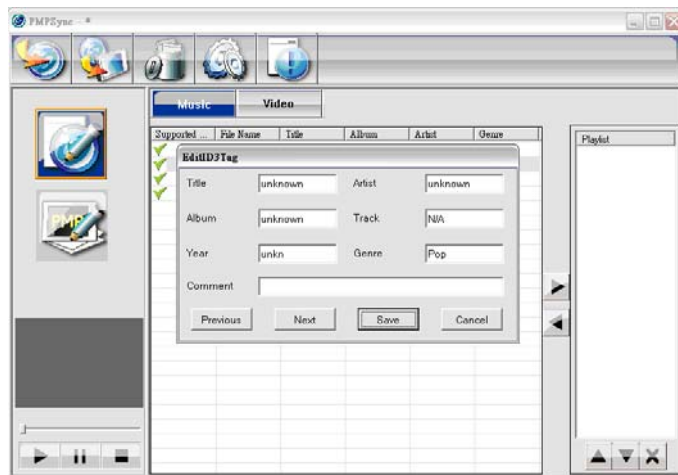
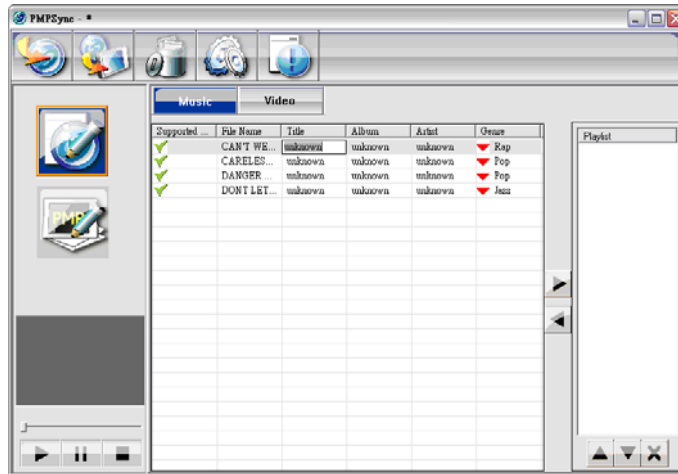
**NOTE:** If a MP3 file is predefined with ID3 Tags, the tags will be shown under each category. The ✓ mark on the Supported Media column denotes the checked files can be playback without converting. Although, sometimes a file may not play correctly. The maximum file name length of an ID3 Tag is 128 uni-code characters.

- To preview a video or music file on the editing list press the  button on Media Player at left hand side. During playback, the file name, elapsed time, and total time will be displayed.

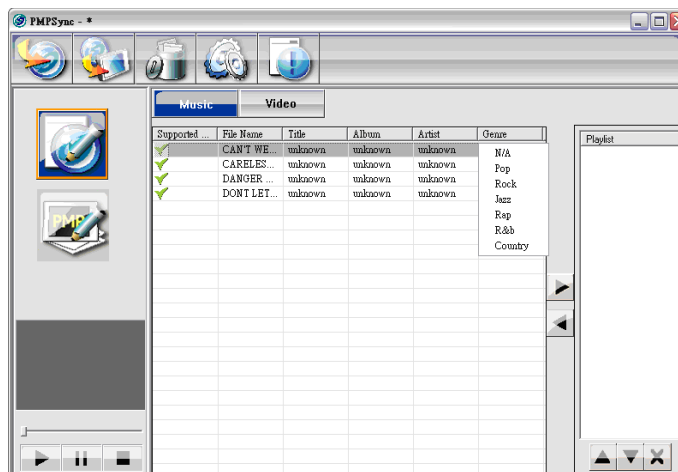


- To edit tags, double click on a category of a file and type in a tag name. If the file is MP3 music, you can also right click on a file and select Edit ID3 Tag to edit tags in a separate window.






13. For Category tag of Video and Genre of Music, click the down arrow and select one of the default options from the drop-down list.



- Video Conversion


If the imported file is not supported by the PMP3520, you can right click on the file on the list and select "Video Convert" to convert the video file into supported format for play on the PMP3520.

- Edit Tags of a File in PMP3520:

You can also edit files in the PMP3520 if they are loaded from other sources than PMP3520 for easier file navigation. To edit tags of a file, click on  button to set the source device as the PMP3520 and follow the steps of "Edit Tags of a File in PC".

- Edit Playlist:

After editing tags of files on the PC, you can group files into playlist and playback the list on the PMP3520. Only one playlist will be transferred to and playback on the PMP3520. To edit playlist:


1. Select all the files that you want to group into a list. Click the  button to add them to Playlist Panel. A typical playlist displays as shown in the figure below.



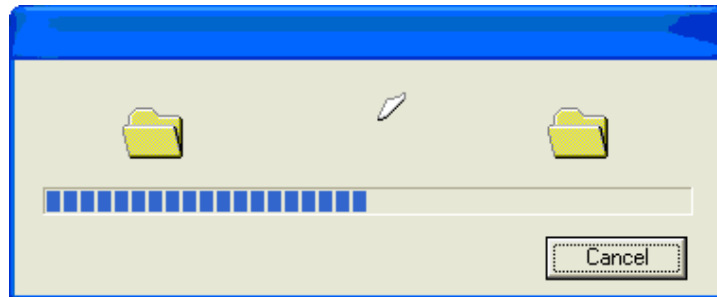
2. Use the Move Up, Move Down, or Delete buttons to manage the files and play sequence their playback.

**Note:** the playlist can have a maximum of 2048 files.

- Transfer Files to PMP3520:

1. After completing playlist editing, click the  button on the Tool Bar to transfer the files and the playlist from the PC to the PMP3520.

2. A progress bar will be displayed, as shown below, during transfer. When it vanishes, the selected files are transferred to the PMP3520.



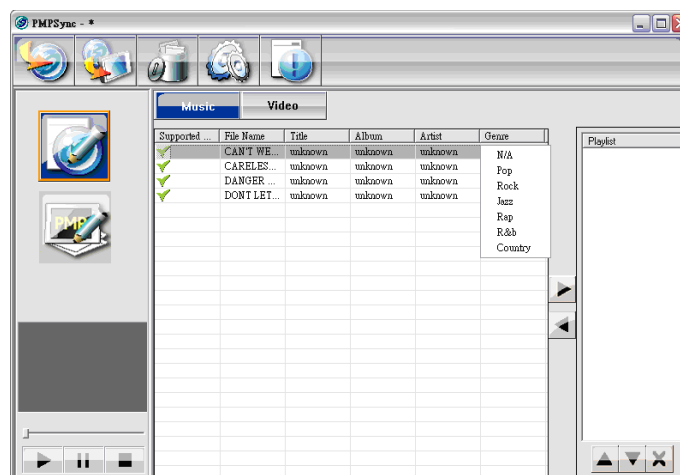
3. Disconnect the PMP3520 from the PC and enter a mode. Select a playlist from the Playlist folder to play a list of files organized with PMPSync.

**NOTE:** Press the Setting button and select SyncMode to Overwrite or Rename files with the same name that have been chosen for uploading. Choose Overwrite or Append on the Sync Playlist to overwrite or append the playlist.

## CREATE MUSIC PLAYLIST—EXAMPLE

To create a music playlist use the following procedure.

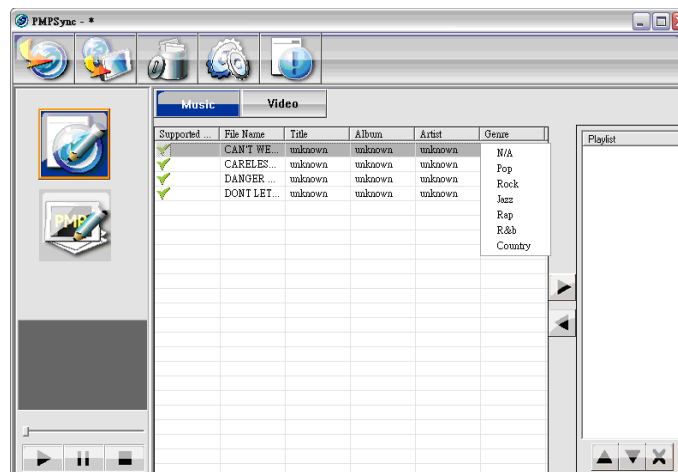
1. Turn on the PMP3520 and wait until the media player has completed it's boot up.
2. Start the PMP Sync utility on your PC, the following window will display.



3. Connect your PC to the PMP3520 via the USB port.
4. After connection is initialized the following window will display on your computer.



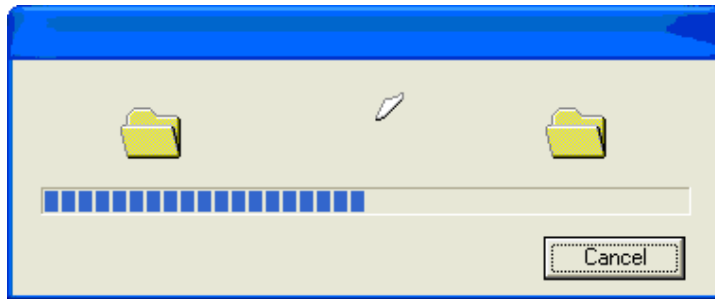
5. Click on Cancel.
6. Click on the Music tab.



2. Select all the files that you want to group into a list. Click the button to add them to Playlist Panel or drag the files you want to the Playlist area (on the right side on the above figure).
3. Click on the 2nd icon (Export to PMP) from the right shown below.



2. A progress bar will be displayed, as shown below, during transfer. When it vanishes, the selected files are transferred to the PMP3520.



3. Disconnect the PMP3520 from the PC.

The playlist is found under the Playlist folder (refer to the *Music* discussion later in this manual

## Video

The PMP3520 supports playback of MPEG-4 SP, DivX 3.11/4/5, Motion JPEG, and WMV-9 SP@ML video files. Video can be playback at up to 30fps. Only supported file formats will be shown on the list and be playable on the PMP3520.

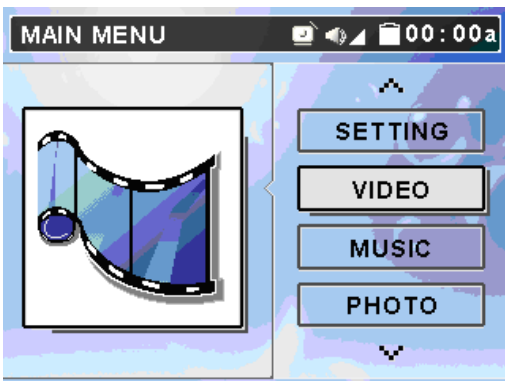


Figure 1

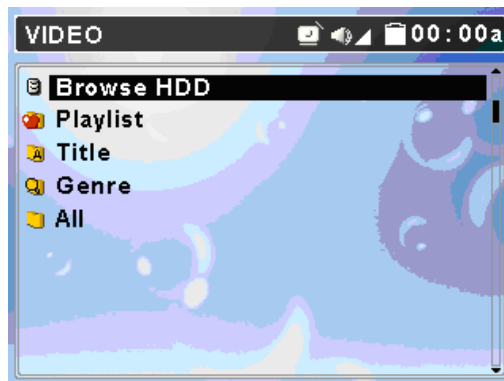
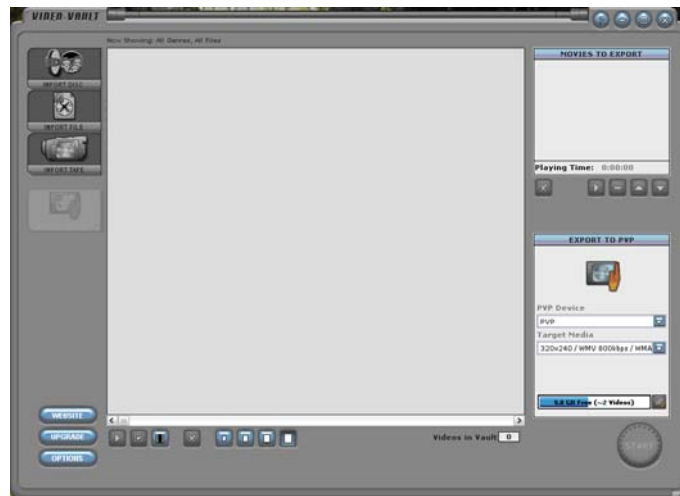



Figure 2

- Play Video on PMP3520:

1. Execute PMPSync to edit video file tags.
2. Connect the PMP3520 to the computer, refer to *Connect and Disconnect from PC*.
3. Upload the files with tags from the computer to the PMP3520 using PMPSync.
4. If the uploading video file is not supported by the PMP3520, you can use the bundled video converter tool to convert it to a supported format.



5. Refer to the *Safely Remove PMP3520 from Computer* section to disconnect the PMP3520 from computer after the files are transferred.
6. On the main menu, push the Navigation button up or down to the Video menu as shown in Figure 1 above. Press in on the Navigation button to display the Video folders as shown in Figure 2.
7. Push the Navigation button up or down to select a folder and press in on the Navigation button to display the contents of the folder, select a file to play from the list by using the same technique with the Navigation button. If there are a large number of files, you can push and hold the down or up Navigation button to quickly scroll to the next or previous page.
8. Preview the highlighted video by pushing the Navigation button to the right. Press the  button once to stop the preview.



9. Press in on the Navigation button to play/pause the selected video. When pressed to pause, you will see the display below showing playback status and elapse time on the display. It will automatically disappear in few seconds.



10. If the file selected to play is not supported by the PMP3520, the message shown below will display.



11. Push the Navigation button to the right to fast-forward video playback, each push increments from FFx2, x4, x8, x16, and x1. (Push once to fast-forward by 2x, twice to fast-forward 4x, etc.) Press in on the Navigation button to playback the video at normal speed.

12. Push the Navigation button left to rewind the playback, each push increments from RWx2, x4, x8, x16, and x1. (Push once to rewind by 2x, push twice to rewind 4x, etc.) Press in on the Navigation button to playback the video at normal speed. When pressing to fast-forward or rewind, you will see the display below showing playback status and elapse time.



13. To adjust brightness of the display when playing a video, push the Navigation button up or down. There are 16 levels of adjustment, use the level that meets your needs. A brightness status bar will display as shown below, it will disappear in a few seconds if no button is pressed.



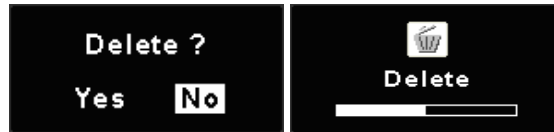
14. If during playing, the video is stopped or power is turned off, the PMP3520 will automatically set a resume bookmark. When you attempt to play the file again, a "Continue?" prompt will be displayed as shown below for continuing the playback. Choose Yes to resume the video playback.



**NOTE:** *There is only one resume break stored at a time on the PMP3520. If you play another video, the resume bookmark will be erased.*



15. If any file is not needed, you can delete it from file list. Push the Navigation button up or down to select the file, pushing the Navigation button left displays the left figure below. Push the Navigation button left/right to select Yes, and press the Navigation button down to confirm to delete. These are displayed as shown below.



- Manage Files on the PMP3520

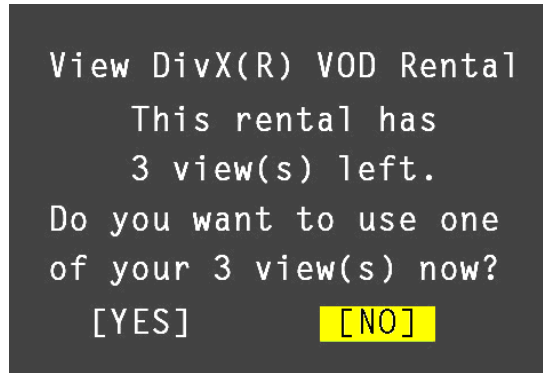
Use Windows Explorer to add files to the PMP3520 by transferring files from your computer to the PMP3520. In Video mode, you will see only the supported video files in the "Browse HDD" folder on the PMP3520.

**Note:** Files transferred using Windows Explorer will only be found in the Browse HDD folder (not shown in categories). Use PMPSync to transfer files into categories.

- Play a DivX® Video:

PMP3520 is certified by DivX's Portable Profile logo program to guarantee playback of DivX®.v3.11, v4.x, and v5.x file formats with up to D1 (704x576) resolution for Portable and Handheld devices. You can transfer DivX format videos to the PMP3520, and play them later on.

1. Connect the PMP3520 to your computer, move or copy DivX® format video files to the PMP3520. Disconnect the computer after transfer is completed.
2. From the PMP3520 main menu, use the Navigation button to highlight Video and press the Navigation button in to enter the Video menu.
3. Select a DivX file from the list and press the Navigation button in. If the file is purchased from the Internet with DivX® DRM protection, you will see the message as shown below. Select [YES] with Navigation button and press the Navigation button in to start to play, or select [NO] to quit the file and return back to video list.



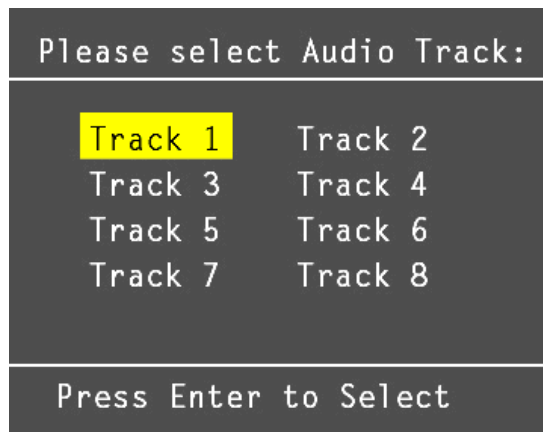
4. With DivX DRM protection, video playing may be limited by the number of views. The video will no longer be able to be played after the rental is expired, and you will see the message below when you try to play it again. Press the Navigation button to acknowledge.



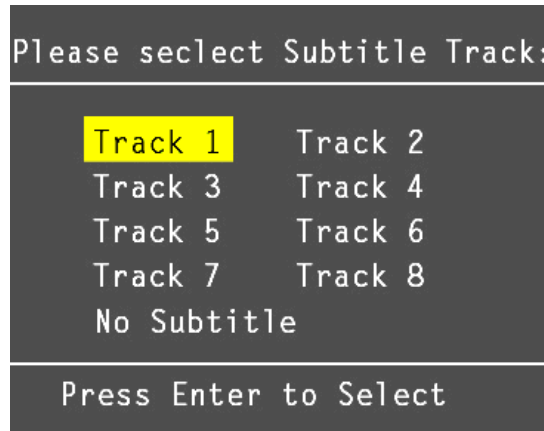
- Select Audio Track and Subtitle Track of DivX® File:

DivX® video may support multiple language audio and subtitle tracks. You can select different languages for audio and subtitles to meet your needs during video playback.

1. If the video has embedded multiple language audio tracks, the "Please select Audio Track" message will display on LCD when you press the Navigation button in to play the DivX® video. Use the Navigation button to choose a track and then press the Navigation button in to start the video.



2. If the video has embedded multiple subtitle tracks, the "Please select Subtitle Track" message will display on LCD when you press the Navigation button in to play the DivX® video file. Use the Navigation button to choose a track and then press the Navigation button in to start the video.



**NOTE:** The tracks now can only be shown as Track 1, Track 2, etc. This function will be updated by DivX® Network in the near future.

3. You can change audio and subtitle language during DivX® video playback. When a video is playing, press the Navigation button in to pause the playback. Push the Navigation button up to select an audio track and press the Navigation button in to switch that audio track. Push the Navigation button down to choose a language subtitle and press the Navigation button in to play with that selected language subtitle.

## Music

.....

The PMP3520 supports MP3 (MPEG1 Layer2, Layer3), WAV (LPCM, ADPCM), and WMA (WMA-9 Layer 2a) file playback. MP3 and WMA can be playback at up to 320 Kbps.

**NOTE:** Only supported files will be displayed on the list and playable on the PMP3520.

**NOTE:** Playing time can be extended (increase battery usage time) by turning the LCD display off while playing music files. See Systems Tab discussion for setting the LCD display to off.

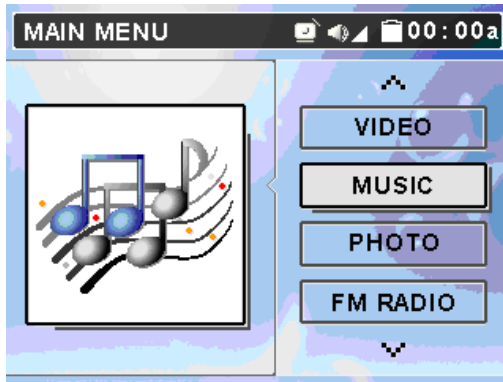


Figure 3

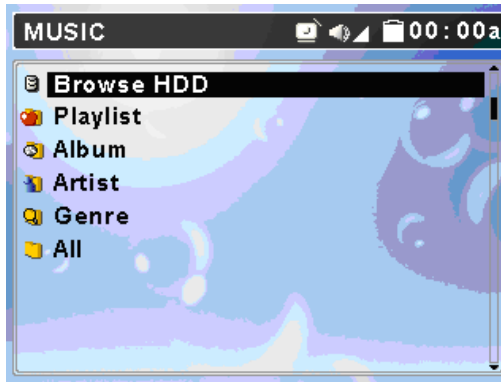
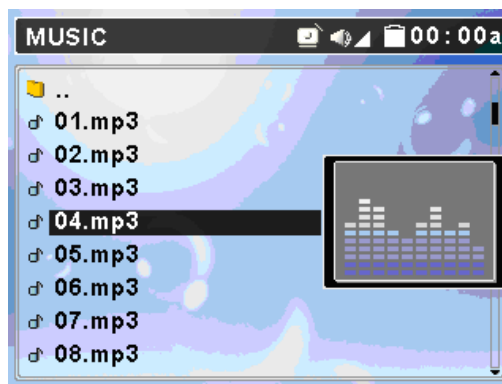


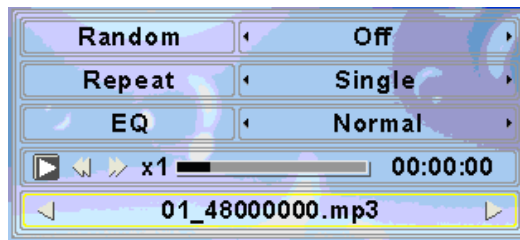
Figure 4

○ Play Music on PMP3520:

1. Use the bundled PMPSync software to edit video file tags.
2. Connect the PMP3520 to the computer, refer to *Connect & Disconnect from PC*.
3. Upload the files with tags from your computer to the PMP3520 using PMPSync.
4. After the files are transferred, disconnect the PMP3520 from the computer.
5. From the main menu, push the Navigation button up or down to Music as shown in Figure 3. On Music selection, press the Navigation button in to display the Music folders as shown in Figure 4.
6. Push the Navigation button up or down to select a category and press the Navigation button in to select a file from list. If there is a large number of files push and hold down or up with the Navigation button to quickly scroll to the next or previous page.
7. You can press the Navigation button to the right to pre-listen (preview) the highlighted file.



- Press the Navigation button in to play the song with the Virtual Music Player.


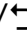


- If the selected file is not supported by the PMP3520, the message below is displayed.



- Push the Navigation button up or down to choose from Random/Repeat/EQ/Playback Status/Song. Each of these items can be adjusted (see the table below).

Random	Push Navigation button right or left: On/Off
Repeat	Push Navigation button right or left: Single/All/Off
EQ	Push right or left: Normal, Jazz, Rock, Classic, Dance
Playback Status	Press Navigation button in: to play/pause playback Push right: 2X/4X fast-forward/Play Push left: 2X/4X rewind/Play
Song	Push left: go to previous song Push right: go to next song

- Press the / button once to stop the file playing.

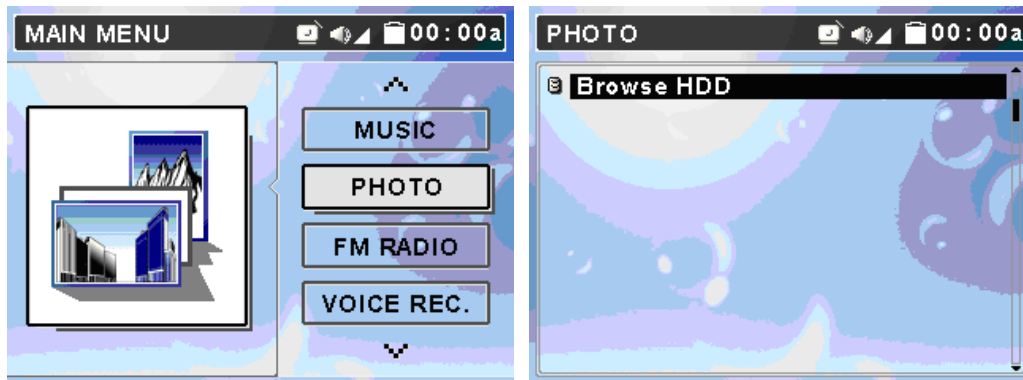
12. If any file is not needed, it can be deleted from the file list. Push the Navigation button up or down to select the file, push the Navigation button left to display the below left-hand figure. Push Navigation key left/right to select Yes, and press Navigation key down to confirm to delete. These are displayed as shown below.



## Photo

.....

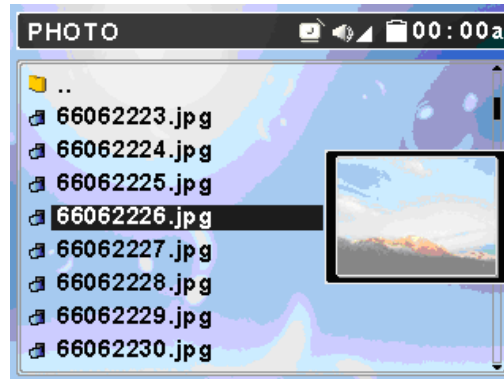
The PMP3520 supports viewing JPEG, GIF, BMP, and TIFF file format. Only supported files will be shown from the list and viewed on the PMP3520.



○ View Photo or Picture

1. Connect the PMP3520 to the computer and upload the files from the computer to the PMP3520.
2. Disconnect the PMP3520 from the computer after the files are transferred.
3. From the main menu, push the Navigation button up or down to select Photo as shown on the above left-hand figure. When Photo is selected, press the Navigation button in to enter the Photo menu as shown in the above right-hand figure.

4. Push the Navigation button up or down to select a category and press the Navigation button in to enter. Push the Navigation button up or down to select a file from list. You can preview selected file by pushing Navigation button to the right (see figure below). Press the Navigation button in, to view the file in full screen.



5. If you want to rotate the photo, push the Navigation button to the right. Each press will rotate the photo 90 degrees. Press the Navigation button in again, the photo will be displayed normally.
6. While viewing the photo in full screen, you can push the Navigation button up or down to view the previous or next photo.
7. Press the Navigation button in to start a Slide Show of the photos. The slide presentation duration, in seconds, can be set from the main menu; go to Setting then Photo then Slide Interval.
8. In slide show mode you can continually repeat all photos saved to the PMP3520 by adjusting Setting Menu\Photo\Slide Repeat to On.
9. You can set a viewing picture to be wallpaper. When desired picture shows on the display in preview mode (see step 6), press the Navigation button left and then to the right (refer to the left-hand figure below). Select wallpaper (right icon) and press the Navigation button in. Select Yes and press the Navigation button in to set that photo as Wallpaper (refer to the right-hand figure below).



- While viewing one photo in full screen (not in slide show mode), push the Navigation button left to browse photos in 3X3 format. Then you will see 9 frames on the display. The first or last photo of a folder will be highlighted in red frame.



**NOTE:** The icon with the exclamation mark in the middle of the figure above denotes the file format for that photo is not supported by the PMP3520.

- Push the Navigation button to the right or left to select the previous or next photo. Push the Navigation button up or down to select last 9 or next 9 photos. Push the Navigation button in to view the selected photo in full screen.
- Press the **■/↶** button to exit photo viewing.

**NOTE:** Photos/pictures are best viewed at resolution of 1600x1200 for JPEG, TIFF, and BMP format; 800x600 for GIF format.

- If any file is not needed, you can delete it from file list. Push Navigation button up or down to select the file, push Navigation button left to see below left figure, select the trash can icon and push the Navigation button in. Push Navigation button left/right to select Yes, and press Navigation key in to confirm to delete. This sequence is displayed below.





# FM Radio

---

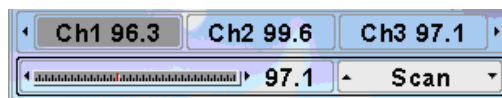
The PMP3520 contains an FM radio, follow the directions below for use:

1. First plug the earphones into the earphone jack. The earphones are also used as the antenna for the PMP3520. A "Plug in Headphone!" momentary message will appear, in step 2 below if they are not plugged in. Radio quality will vary from different geographic regions and orientation of the PMP3520. Disconnecting the earphones may cause radio static.
2. Push the Navigation button up or down to select FM Radio as shown in the left-hand figure below, and then press the Navigation button in to display the FM Radio shown as in the right-hand figure below.



○ Search/Tuning FM Stations

3. Default (memory) stations showing on the top portion of the display (see figure below). The bottom section shows the frequency tuning indicator with a display of frequency and also the tuning method (scan or fine).



4. Push the Navigation button down to select Scan or Fine Tune. When Scan is selected, an available station can be found by pushing Navigation key to the right or left. If Fine Tune is selected, frequency bar will be adjusted by 0.1 MHz on each Navigation button left or right movement.
5. On scanning or tuning, the frequency tuned to is shown on display.

- Store a FM station

1. To store a FM station, on the Frequency Bar, press down the Navigator button after a desired radio station has been tuned in, station number 1 will be flashing.
2. Select station number from 1 to 8 by pushing the Navigation button to left or right, and press down on the Navigation button to save frequency to that assigned station number.
3. Repeat steps 1-2 to store other stations.

- Select a stored FM station

1. To select a stored station, push Navigation key up to Station List.
2. Push Navigation key to the left or right to select a number and press down Navigator button to listen to the selected station.

- Record from an FM station

1. You can also record a radio broadcast into mp3 format with the PMP3520. Select a station and then press ● REC button to record.
2. The Record Quality and Record Time will be shown on the display (see figures below), and Record LED will be illuminated.

**NOTE:** The record quality is set in the Setting—Record section of the Setting menu.



3. To stop recording, press the ● REC button again. When recording has stopped, the saved file information will be shown (see the following figure). In the Music\Record folder you will find the saved file(s). The file names start with [FM000000.mp3], [FM000001.mp3], and so forth.



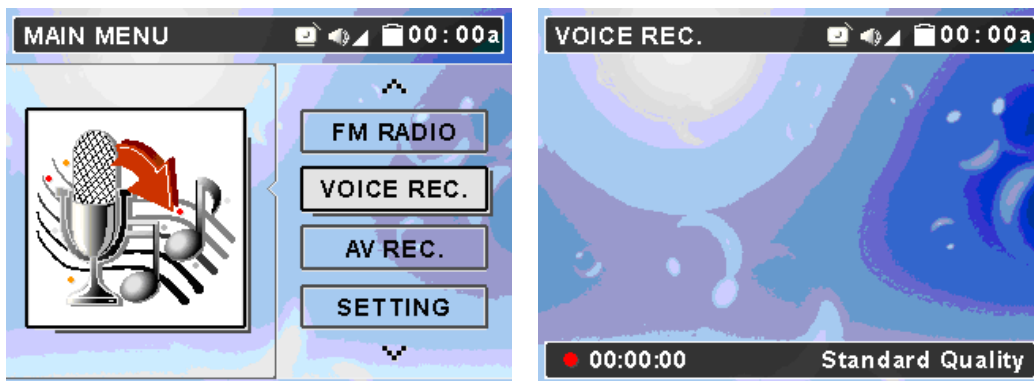
- Delete a Recorded FM File

To delete a recorded FM file, use the Navigation button to go to Music mode, Browse HDD, Recorded folder. Select the file to be deleted and press the Navigation to the left, select yes, and press the Navigation button in.

## ***Voice Recording***

---

The PMP3520 provides a voice recorder function.



- Record Voice

1. Push Navigation button up or down to select Voice Record as shown above. Press the Navigation button in to enter the Voice Record screen as shown above.
2. On Voice Record, press ● REC button to start recording. The microphone is located at the top of the PMP3520.

**NOTE:** To avoid battery discharge and subsequent loss of recording, it is suggested that the AC adapter be used to power the PMP3520.

**NOTE:** The record quality is set in the Setting—Record/Voice section of the Setting menu.

3. Press the REC ● button to start recording, the Record LED will stay illuminated and the Start Recording message will display.



3. To stop recording, press REC ● button again. You will see the recorded file being saved to the Music\record folder (see figure above). The file name will start with [V0000000.mp3], [V0000001.mp3], and so forth, for each recording.

**NOTE:** The maximum length of Voice Recording depends on hard disk free space. Voice Recording can not exceed 24hrs or 2GB.

- Play a Recorded Voice File

1. To play a recorded voice file, use the navigation button to go to Music mode, Browse HDD, Recorded folder.
2. Find recorded file name on the file list of Music mode.
3. Select a file and press the Navigation button in to play or press to the right to preview the file.

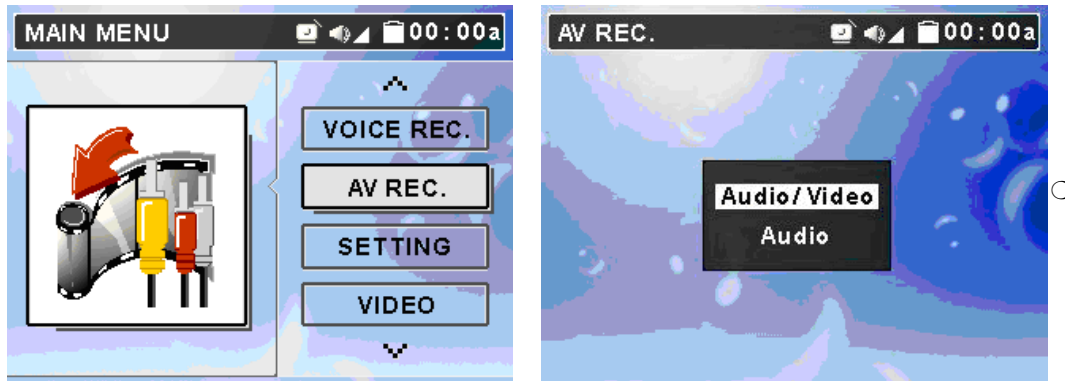
- Delete a Recorded Voice File

To delete a recorded voice file, use the Navigation button to go to Music mode, Browse HDD, Recorded folder. Select the file to be deleted and press the Navigation to the left, select yes, and press the Navigation button in.

# AV Recording

---

PMP3520 can also record AV signal from other devices.



## Record AV

1. Connect the PMP3520 AV-In Jack to an AV output device, such as TV or DVD player with the supplied AV cable. Match video line-in component cable to AV signal connectors on the same row by color or text.

**NOTE:** To avoid battery discharge and subsequent loss of recording, it is suggested that the AC adapter be used to power the PMP3520.

**NOTE:** Before recording from TV/Video, it is recommended that the highest resolution and Best AV quality in Setting be selected.

2. On main menu, push the Navigation button up or down to select AV Record. On AV Record, press the Navigation button in.
3. You will first read a prompt for Audio/Video or Audio options. Select your preference with Navigation button, and press the Navigation button in to confirm.



4. If Audio/Video option is selected without AV cable connected, you will see the following message will display momentarily.



5. If you select the Audio/Video option, the message below will display. You can choose a duration, and recording will stop automatically when the selected time has elapsed. Select an option by the Navigation button and press the Navigation button in. If Continuous is selected, when the recorded file exceeds 2GI capacity or 3 hours, the recording will be saved and then will continue to record the signal to another file, unless you press ■/Exit button.



6. Press the REC ● button to start recording, the Record LED will be illuminated and the message below will display.



7. To stop recording, press the REC ● button again. If the recording option is set to Audio/Video, a file will be generated in Video\Record folder. File name starts with [AV000000.asf], [AV000001.asf], and so forth. If the recording option is set to Audio, recorded files will be created in Music\Record folder with file name starting as [AU000000.mp3], [AU000001.mp3].



***NOTE:** The maximum length of an AV Recording file depends on hard disk free space and can not exceed 3hrs or 2GB.*

- Play a Recorded AV File

1. To play a recorded AV or audio file, go back to main menu and select Video or Music mode by referring to Video or Music section.
2. Find the recorded file name in Video\Recorded folder or Music\Recorded folder.
3. Select a file and press the Navigation button in to play or press to the right to preview the file.

- Delete a Recorded A/V File

To delete a recorded A/V file, use the Navigation button to go to Video or Music mode, Browse HDD, Recorded folder. Select the file to be deleted and press the Navigation to the left, select yes, and press the Navigation button in.

## ***SD/MMC card***


.....

The PMP3520 comes with a SD/MMC card slot. You can insert a Secure Digital Card or MultiMedia Card into the slot to increase the capability and functionality of your PMP3520.


- Insert a SD/MMC Card

1. If you highlight the [SD-MMC] folder under Music, Video, or Photo, and press the Navigation button in without inserting a card, you will see a message as below.

**NO SD/MMC!**

2. **Before inserting a SD/MMC card**, press the  button to **turn off** the PMP3520, if power is on.
3. Insert your SD card or MMC card into the slot in the correct orientation.



4. Push down on the SD/MMC card to release the lock and card will come up about 1/4" to allow easy removal of card. Remove card completely before trying to push card back in so spring loaded latch mechanism can reset. Card must be pushed down firmly (you will feel some spring tension) to latch. The unit is shipped with a dummy card in the slot to keep the spring latch secure. The dummy card must be removed before a memory card is inserted.
5. Press  button to turn on PMP3520.
6. If your SD/MMC card has video, audio, or photo files in the inserted card, change to appropriate mode to play or view them.

**IMPORTANT:** Before inserting or removing the SD/MMC card, turn the power off to the PMP3520, otherwise files on the PMP3520 and the card might be corrupted!

## ***Signal Input and Output***

---

You can view the PMP3520 signal output on a large video device, such as a TV set, to share your enjoyment with a larger group. Also, you can input signals from a video device to the PMP3520, and record the signal into files utilizing the AV Recording function.



○ Output PMP3520 Signals to a TV:

1. Connect the PMP3520 AV-Out Jack to a TV with the supplied AV cable. Note the AV cable should be connected correspondingly in color or text to TV AV-In Jack.
2. Turn on your TV and switch it to Video (AV signal) mode.
3. Change Setting Menu\Display\Display option on PMP3520 to TV, you will see the display switch to the TV. The remote's TV/LCD button can also be used to switch the display.

**NOTE:** When the PMP is powered off and turned back on the TV/LCD mode will reset and default back to LCD.

4. On Video menu, select and play a file on the PMP3520. Now you can watch the video file on TV and adjust settings on the PMP3520 with supplied remote.

○ Input Other Video Device Signals to the PMP3520:

1. Connect PMP3520 AV-In Jack to a video device, such as TV set or DVD Player, with the supplied AV cable. Note the AV cable should be connected correspondingly in color or cable text markings to the video device AV-Out Jack.
2. Turn on the video device and have the video or channel tuned to what you want to record or play.
3. Enter the PMP3520 AV Recording function, select "Video/Audio". That signal will play on the PMP3520.
4. Refer to AV Recording section to have the signal recorded to files and saved on the PMP3520. You can playback the recorded files anytime on-the-go, or transfer them to computer to share with friends.

## ***On The Go***

.....

The USB On-The-Go function is a new technology, also called OTG. The PMP3520 supports OTG and can directly backup data from portable disks and digital cameras without going through a PC. To transfer files from portable devices, use the following procedure:

1. Connect the USB host cable (the short one), to the PMP3520 USB port. The PMP3520 is now ready for the USB device.

2. Connect your USB device, such as digital camera or USB memory stick, to the other end of the USB host cable.

**NOTE:** *The USB device and the PMP3520 should be turned on before making the USB connections.*

3. The message below will display when the connection is initialized. To copy all the files from USB device connected to the PMP3520, press the REC ● key (button) as the message states.



4. Files from the USB device will be saved to a folder under USB OTG folder of PMP3520, folder name will be USB00001, USB00002, etc.
5. If the connected USB device supports OTG, the following message will display.



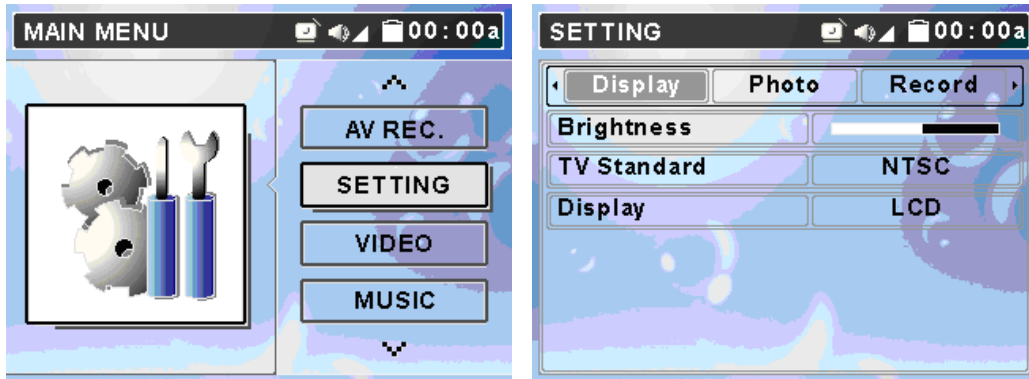
**NOTE:** *The PMP3520 supports limited USB devices. For an up-to-date compatibility list, please visit <http://www.directedmobilemedia.com>*

**NOTE:** *It is suggested that the AC adapter be used to power the PMP3520 while a USB device is connected.*

# Setting

---

PMP3520 Setting menu includes Display, Photo, Record, System, and Info tabs.



1. Select Setting menu by pushing the Navigation button up or down as shown above on the left. Press the Navigation button in, the screen will display as shown above on the right.
2. Push the Navigation button right or left to select Display, Photo, Record, System, or Info tab with the various setting options for each tab.

**NOTE:** Exit the Setting Menu by pressing the **■/↶** button, any new settings will be saved and applied.

## DISPLAY TAB

The Display tab includes Brightness, TV Standard, and Display items.

1. Enter Setting menu, the Display tab is the default tab (see figure above).
2. Push the Navigation button down to select Brightness, TV Standard, or Display. Refer to the table below for the settings available.

Setting Item	Method and Purpose	Options
Brightness	Push Navigation button to right or left to adjust display brightness	Adjust brightness to meet personal requirements
TV Standard	Push Navigation button to right or left to select a video standard	NTSC/PAL
Display	Push Navigation button to right or left to select the output device	LCD/TV—In TV mode the 3.5" LCD screen will be blank. When powered off the unit will revert to the 3.5" LCD screen operation.

## PHOTO TAB

The following photo settings, Slide Music, Slide Repeat, and Slide Interval are found under the Photo tab.



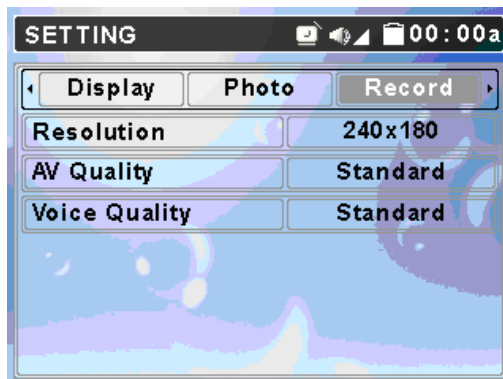
1. From Setting Menu, push the Navigation button right or left to go to Photo as shown above.
2. Push the Navigation button up or down to select among Slide Music, Slide Repeat, and Slide Interval. Refer to the table below for the settings available.

Setting Item	Adjustment and Purpose	Options
Slide Music	Push Navigation button right or left to enable or disable the background music	On, Off
Slide Repeat	Push Navigation button right or left to enable or disable the repetition	On, Off
Slide Interval	Push Navigation button right or left to adjust the interval between each photo	3/5/10/20/30 sec.

**NOTE:** The slide music depends upon a previously saved mp3 playlist (using the PMPSync program only discussed previously).

## RECORD TAB

You can adjust Resolution, AV Quality, and Voice Quality in Record tab.



1. In Setting Menu, push the Navigation button right or left to Record tab. The display will appear as shown above.
2. Push the Navigation button up or down to select a setting item. Refer to the table below for the settings available.

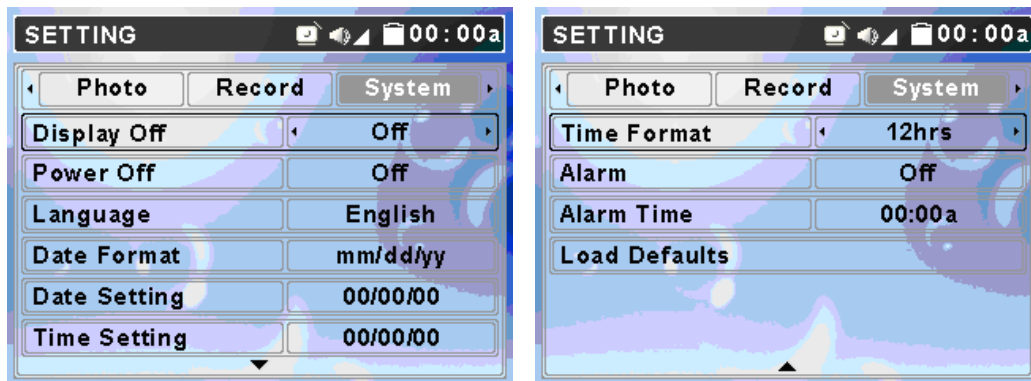
Setting Item	Method and Purpose	Options
Resolution	Push Navigation button right or left to adjust record resolution	240x180, 280x210, 312x234, 320x240
AV Quality	Push Navigation button right or left to adjust AV quality	Standard, Fine, Better, Best
Voice Quality	Push Navigation button right or left to adjust voice quality	Standard, Fine, Better, Best

**NOTE:** The file size will be larger when higher resolution and/or quality are selected.

PMP3520 can record video at up to 30 fps. Select the settings for your preferences.

## SYSTEM TAB

You can adjust various system settings within the System tab.



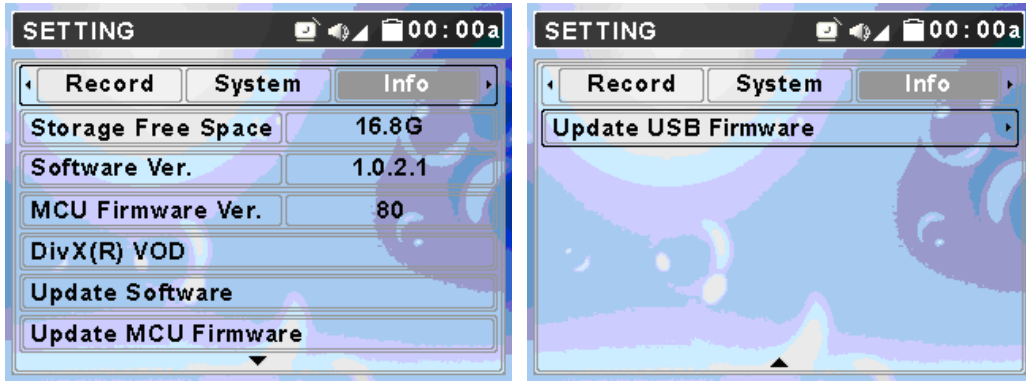
To change system settings:

1. In Setting Menu, push the Navigation button right or left to System tab. The display will display as shown above.
2. Push the Navigation button up or down to select Display Off, Power Off, Language, Date Format, Date Setting, Time Setting, Time Format, Alarm, Alarm Time, and Load Defaults. Refer to the table below for the settings available.

Setting	Method and Purpose	Options
Display Off	Push Navigation right or left to set Display shut down on idling to save battery consuming.	Off/3 sec/5 sec/10 sec /15 sec/30 sec/1 min.
Power Off	Push Navigation right or left to set power off automatically.	Off/15 sec/30 sec/1/2/5/10 min.
Language	Push Navigation right or left to select language.	Version dependent
Date Format	Push Navigation right or left to select date format on display.	yy/mm/dd, mm/dd/yy, dd/mm/yy
Date Setting	Push Navigation right or left to select year/month/day. Push Navigation up or down to change property.	Set today's date
Time Setting	Push Navigation right or left to select hour/minute/sec. Push Navigation up or down to change setting.	Set time
Time Format	Push Navigation right or left to select time format on display.	12hrs/24 hrs
Alarm	Push Navigation right or left to enable or disable the alarm function.	Off/On
Alarm Time	Push Navigation right or left to select hour/ minute/sec. Push Navigation up or down to change property.	Sets the alarm time
Load Defaults	Push Navigation key right and select YES to load factory default settings.	Yes/No

## INFO TAB

You can display information regarding Storage Free Space, Software Version, MCU Firmware Version, DivX (R) VOD, Update Software, Update MCU Firmware, and Update USB Firmware in Info tab.



To change information settings:

1. In Setting Menu, push the Navigation button right or left to select Info tab. The display will appear as shown above.
2. Push the Navigation button up or down to change the selection. Refer to the table below for the information/settings available.



Setting Item	Method and Purpose	Options
Storage Free Space	Shows HDD available storage free space.	NA
Software Version	Displays software version.	NA
MCU Firmware Version	Displays MCU Firmware version.	NA
DivX (R) VOD	Push Navigation key to the right to read DivX information and the registration code.	NA
Update Software	Please refer to Upgrade Software for procedure to upgrade the software.	Yes/No
Update MCU Firmware	Refer to the Upgrade Firmware for procedure upgrading firmware.	Yes/No
Update USB Firmware	Refer to the Upgrade Firmware for procedure upgrading firmware.	Yes/No

*NOTE: Updating Software, Update MCU Firmware, and Update USB Firmware are advanced operations! Only advanced users should perform these actions! Refer to the website [www.directedmobilemedia.com](http://www.directedmobilemedia.com) for additional information.*

# Specifications

PMP3520	
Dimensions	4.9 x 3 x 1 in. (124 x 76 x 24.5 mm)
Weight	About 8.6 oz. (245 g) (with battery)
Operating Temperature	41°F to 95°F (5°C to 35°C)
Storage Temperature	-4°F to 158°F (-20°C to +70°C)
Operating Humidity	15% to 90%
Audio Spec	Earphone Output: 30mW rms (15mW / channel) Frequency: 20 to 20KHz SNR: ~85dB
Supports OS	Windows 98SE, Windows ME, Windows 2000 Windows XP Home/Pro (Windows 98SE system requires driver installation.)
USB Profile	Meet USB 2.0 Profile
LCD Display	3.5" (8.9 cm)
Hard Disk	20 GB
I/O Input	Output: mini-USB connector, Earphone Jack, AV-in Jack, AV-out Jack, AC Adaptor connector, CIR, Speaker, and Microphone
EMI and Safety	BSMI, FCC, CB, CE, VCCI, CCC
Battery	Li-Ion rechargeable battery, 2200mAh/3.7V
Video Playback	5 hours
Audio Playback	7.5 hours (with LCD screen off)
Power Adapter	100–240 V (varies from country to country)

Battery life test is under the conditions of Temperature/Humidity 25°C, 50%RH, System Setting: Brightness: 10 /16 Level, Volume: 50%, Audio Output: Headphone, Test File: Resolution: 240x180, Video bit-rate: 800Kbps, Audio bit-rate: 64Kbps, File size: 1.1GI, MP4+MP3, Power Sources: Battery, Test Duration: 4 hours.

**NOTE:** Specifications are subject to change without notice.

# ***Firmware/Software Download/Upgrade***

---

Use the following procedure to download the firmware and software to upgrade your PMP3520.

1. Using your computer connect to *www.directedmultimedia.com*. Download and save the upgrade file for the PMP3520 to your desktop. The file will be named PMP3520XXXX.exe with the version level indicated in the file name.
2. Double click on the exe file to extract the zipped files to a folder on your desktop.
3. Connect the PMP3520 to your computer with the USB cable.
4. Power on the PMP3520 to initialize it on your computer.
5. Copy all the files from the folder to the systems directory of your PMP3520.

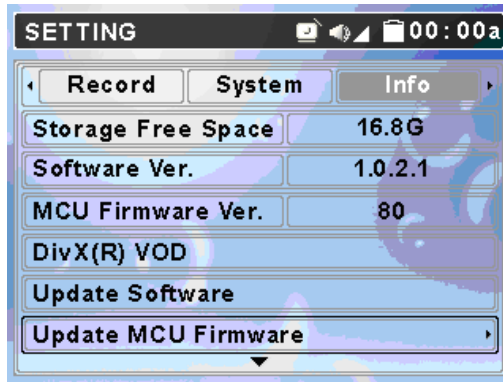
**NOTE:** *If you cannot view the System's directory on the PMP3520 be sure to turn on your PC's hidden file viewing.*

6. A "Confirm File Replace" dialog box will display. Click on "Yes to All."
7. Safely disconnect the PMP3520 from your computer.
8. Proceed to the *Upgrade Firmware* procedure below.

**NOTE:** *During the firmware/software upgrade process do not turn the power off to the PMP3520. If power is turned off before the upgrade is completed the unit will not function.*

## **UPGRADE FIRMWARE**

Use the following procedure to upgrade the PMP3520 firmware:



**NOTE:** To prevent battery discharging while upgrading, we recommend that the AC Adapter be used.

**NOTE:** If you need to update both firmware and software, update the firmware first.

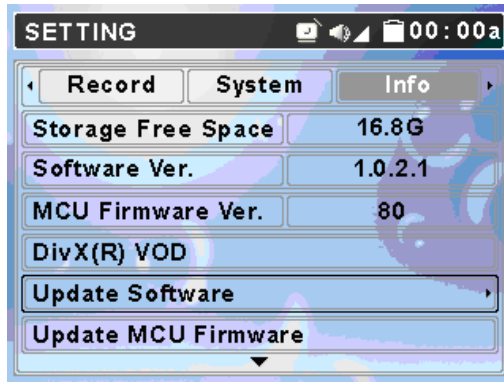
1. Select Setting from main menu and press ►/Enter button to enter.
2. Push the Navigation button left or right to select Info tab.
3. Push the Navigation button up or down to select Update Firmware.
4. Push the Navigation button to the right. Message "Confirm? Yes No" will appear on the display.



5. Push the Navigation button to the right or left to select Yes and press the Navigation button in to start to upgrade firmware. Or, select No to cancel upgrade.
6. When firmware upgrade completes, system will restart.

## UPGRADE SOFTWARE

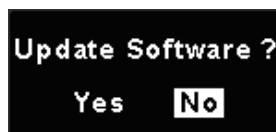
Use the following procedure to upgrade the PMP3520 software:



**NOTE:** To prevent battery discharging while upgrading, we recommend that the AC Adapter be used.

**NOTE:** If you need to update both firmware and software, update firmware first.

1. Select Setting from main menu on your PMP3520 and press the Navigation button in to enter.
2. Push the Navigation button left or right to select Info tab.
3. Push the Navigation button up or down to select Update Software.
4. Push the Navigation button to the right. Message "Confirm? Yes No" will show on the display.



5. Push the Navigation button right or left to select Yes and press the Navigation button in to start to upgrade software. Or, select No to cancel the upgrade.
6. When the software upgrade completes, the system will restart.

## **The company behind this system is Directed Electronics.**

Since its inception, Directed has had one purpose, to provide consumers with the finest vehicle security, car stereo products, rear seat entertainment, and accessories available. The recipient of more than 20 patents in the field of advanced electronic technology, Directed is ISO 9001 registered.

Quality Directed Electronics products are sold and serviced throughout North America and around the world.

Call **(800) 274-0200** for more information about our products and services.



Directed Electronics is an ISO 9001 registered company.

Directed® is committed to delivering world-class quality products  
and services that excite and delight our customers.

***Directed***<sup>®</sup>  
E L E C T R O N I C S

Directed Electronics  
Vista, CA 92081  
[www.directed.com](http://www.directed.com)

© 2005 Directed Electronics—All rights reserved  
N93520 09-05