

NETGEAR RangeMax™ NEXT Wireless PCI Adapter WN311B

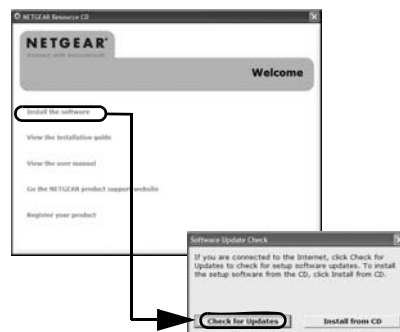
These setup instructions assume that you will connect to an access point or wireless router.
Estimated completion time: 10 minutes.

Installation

1. First, install the WN311B software.

Insert the NETGEAR CD. If the CD main page does not appear, double click **Autorun.exe** on the CD.

- Click **Install the Software**. The Check for Updates window opens.
- If you are connected to the Internet, click **Check for Updates**. If not, you can choose to install from the CD.
- Follow the Wizard steps and click **Next** to continue.



When the software has been installed the Connection Wizard prompts you to shut down the computer.

2. Now, insert the wireless PCI adapter.

- When prompted, shut down the computer.
- Unplug the computer, open the case, and install the WN311B into a PCI slot.
- Connect the antenna to the adapter and position the antenna to the up position.
- Close the case, plug the power cord back in, and restart your computer.
You will be prompted to select the country where you are located.
- Select the country and click **Agree**.



3. Use the Smart Wizard to set up your wireless PCI adapter.

- Windows 2000 users go to Step b. Windows XP or Vista users can set up the wireless adapter either with the NETGEAR Smart Wizard (recommended) or the Windows configuration utilities.



- NETGEAR Smart Wizard:** Reveals more information about each network and makes it easier to troubleshoot network connection problems.
- Windows configuration utilities:** See the Windows documentation or “Using Windows XP and Vista Wireless Configuration Utilities” at: <http://documentation.netgear.com/reference/enu/winzerocfg/index.htm>


- Click **Next** to accept the NETGEAR Smart Wizard. You will be prompted to let the wizard help you connect to a network (recommended).
- Click **Next** to accept.



4. Connect to a wireless network.

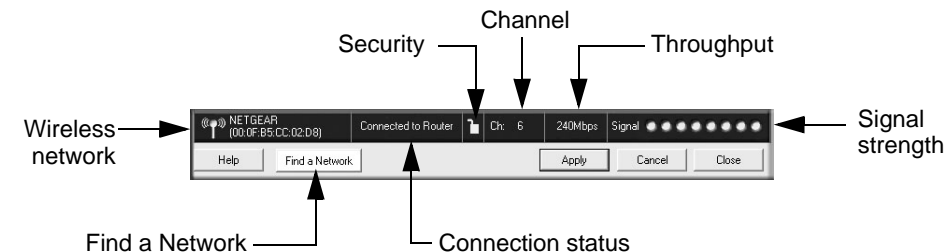
- Select the wireless network from the drop-down list, and the wizard records your choice.
Note: Hidden networks do not broadcast the Network Name (SSID). These networks are in the drop-down list, but the Network Name (SSID) is blank.
- The Smart Wizard detects if the network uses security or not. Follow the Wizard steps for Security (if used) and for saving a Profile.
- After you have reviewed the settings, click **Finish**.



The WN311B icon  appears in the system tray and on the desktop, and the Settings page opens. The wizard initiates your wireless connection. It could take up to a minute for your wireless connection to be established.

Using the Status Bar

The status bar is located at the bottom of the Settings page.



Understanding the Status Bar	
Wireless network	Identifies which wireless network you have joined.
Security	<ul style="list-style-type: none"> Locked: security enabled. Unlocked: security not enabled.
Channel	The wireless channel used by the network. If many wireless networks in your area use the same channel they can interfere with one another.
Throughput	Wireless throughput measured in Mega bits per second.
Signal strength	More dots indicates a stronger signal. Usually, you will experience higher throughput when the signal is strongest.
Find a Network	Click Find a Network to open the Connection Wizard.
Connection status	Identifies the status of your network connection. <ul style="list-style-type: none"> Connected to Internet: Wireless Internet connection is OK. Connected to Router: Wireless connection to the router is OK but the router is not connected to the Internet. 169.254.x.x or _____.____.____.____: The wireless connection to the router is OK but there is a problem with the router. See the online help or the <i>NETGEAR RangeMax™ NEXT Wireless PCI Adapter WN311B User Manual</i> on the NETGEAR CD for troubleshooting.

Note: To optimize throughput, connect to a network with a high-speed router or access point, and a high-speed Internet connection. For more information about optimizing wireless performance, and network bandwidth, see the *NETGEAR RangeMax™ NEXT Wireless PCI Adapter WN311B User Manual* on the NETGEAR CD.

Technical Support

Thank you for selecting NETGEAR products.

After completing the Smart Wizard configuration assistant, locate the serial number on the bottom label of your product and use it to register your product at

<http://www.NETGEAR.com/register>.

Registration on the website or over the phone is required before you can use our telephone support service. The phone numbers for worldwide regional customer support centers are on the Warranty and Support Information card that came with your product.

Go to *<http://kbserver.netgear.com>* for product updates and Web support.



201-10904-02

January 29, 2007



This symbol was placed in accordance with the European Union Directive 2002/96 on the Waste Electrical and Electronic Equipment (the WEEE Directive). If disposed of within the European Union, this product should be treated and recycled in accordance with the laws of your jurisdiction implementing the WEEE Directive.

© 2007 by NETGEAR, Inc. All rights reserved. NETGEAR is a registered trademark of NETGEAR, Inc. in the United States and/or other countries. Other brand and product names are trademarks or registered trademarks of their respective holders. Information is subject to change without notice.